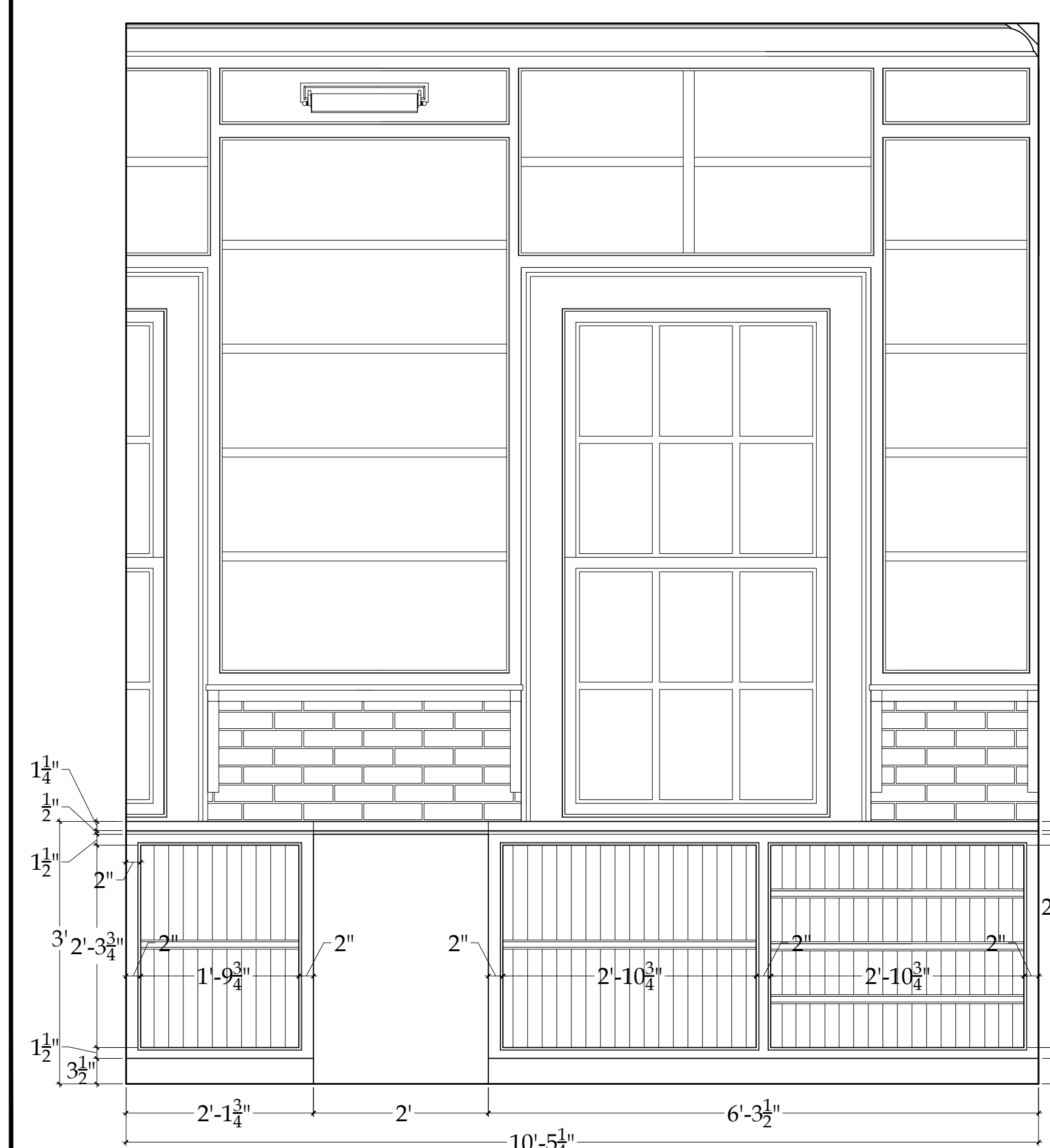


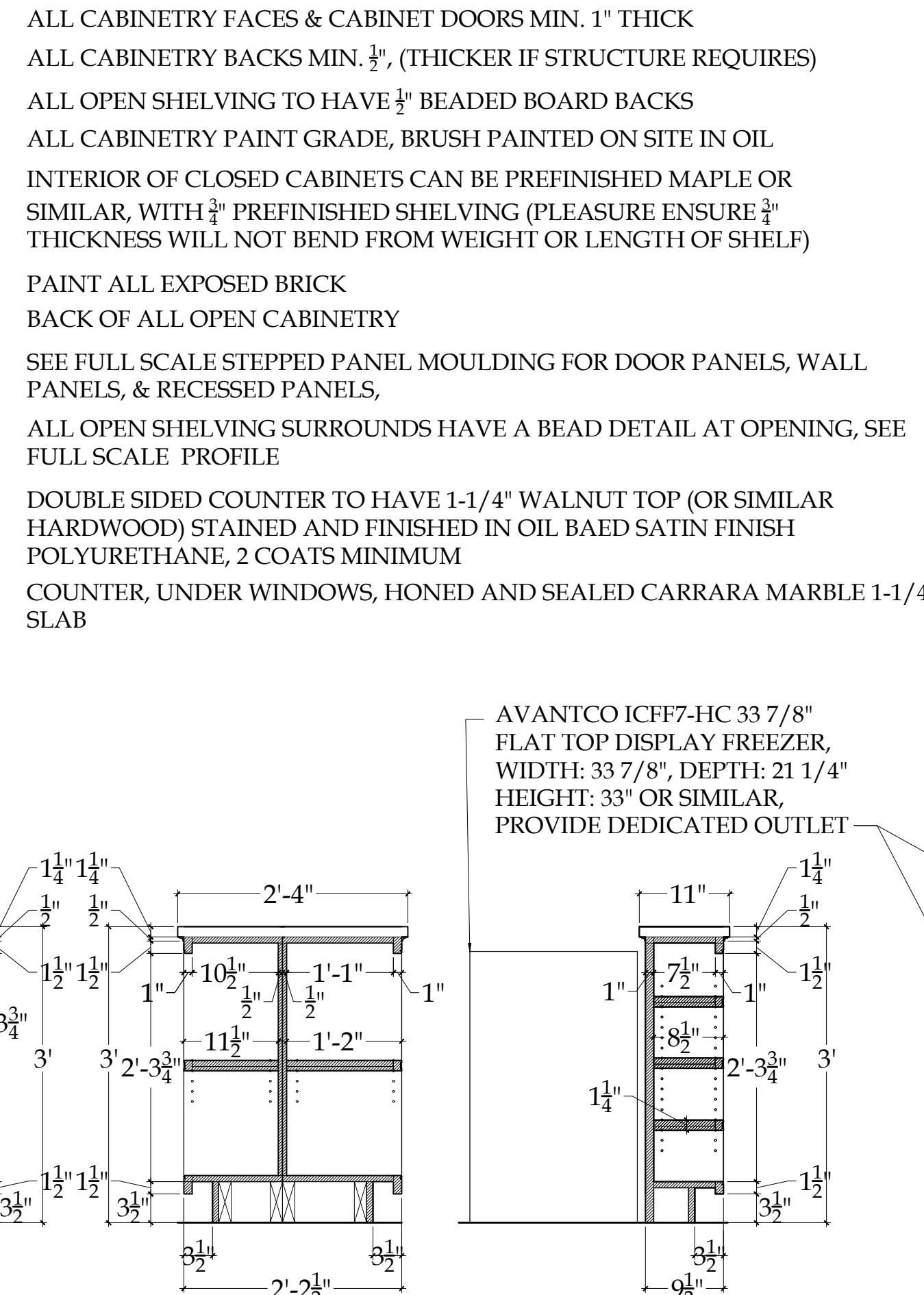
1  
1-1.6  
GENERAL STORE: SECTION OF CABINERY BEHIND MAIN COUNTER  
Scale: 3/4"=1'-0"

2  
1-1.6  
GENERAL STORE: NORTH ELEV. BEHIND MAIN COUNTER  
Scale: 3/4"=1'-0"

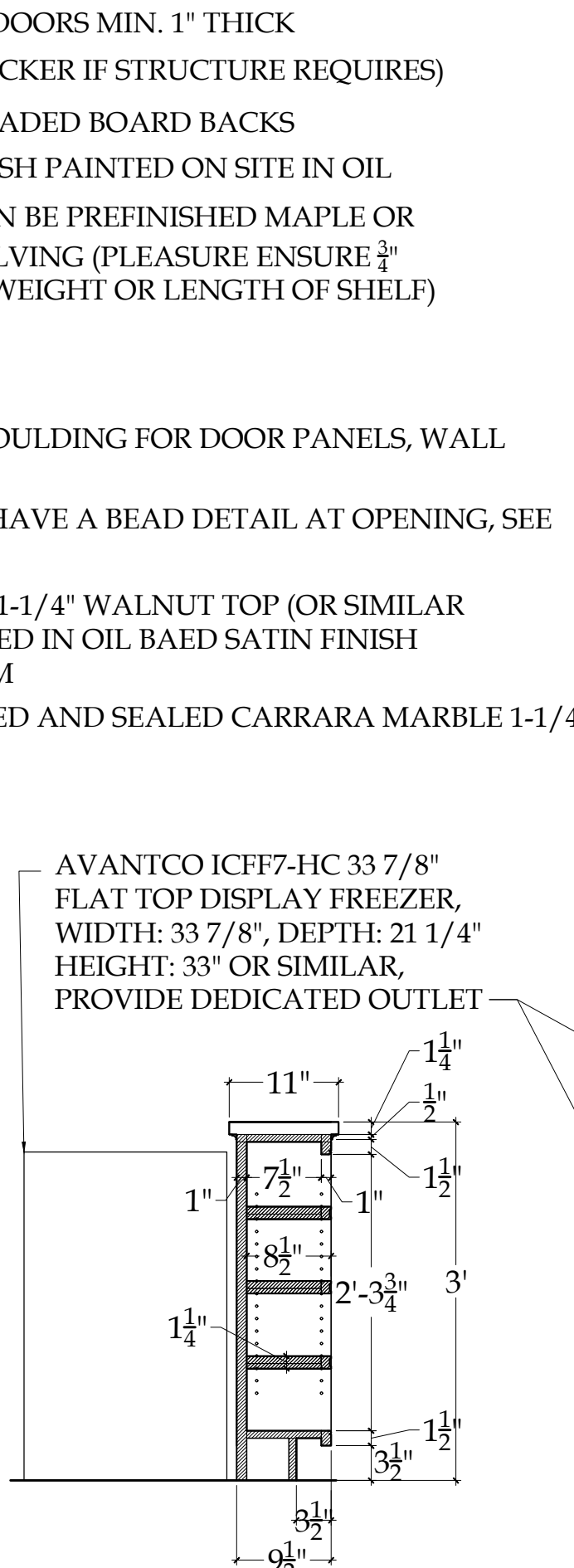
3  
1-1.6  
GENERAL STORE: NORTH ELEV. BEHIND MAIN COUNTER  
Scale: 3/4"=1'-0"



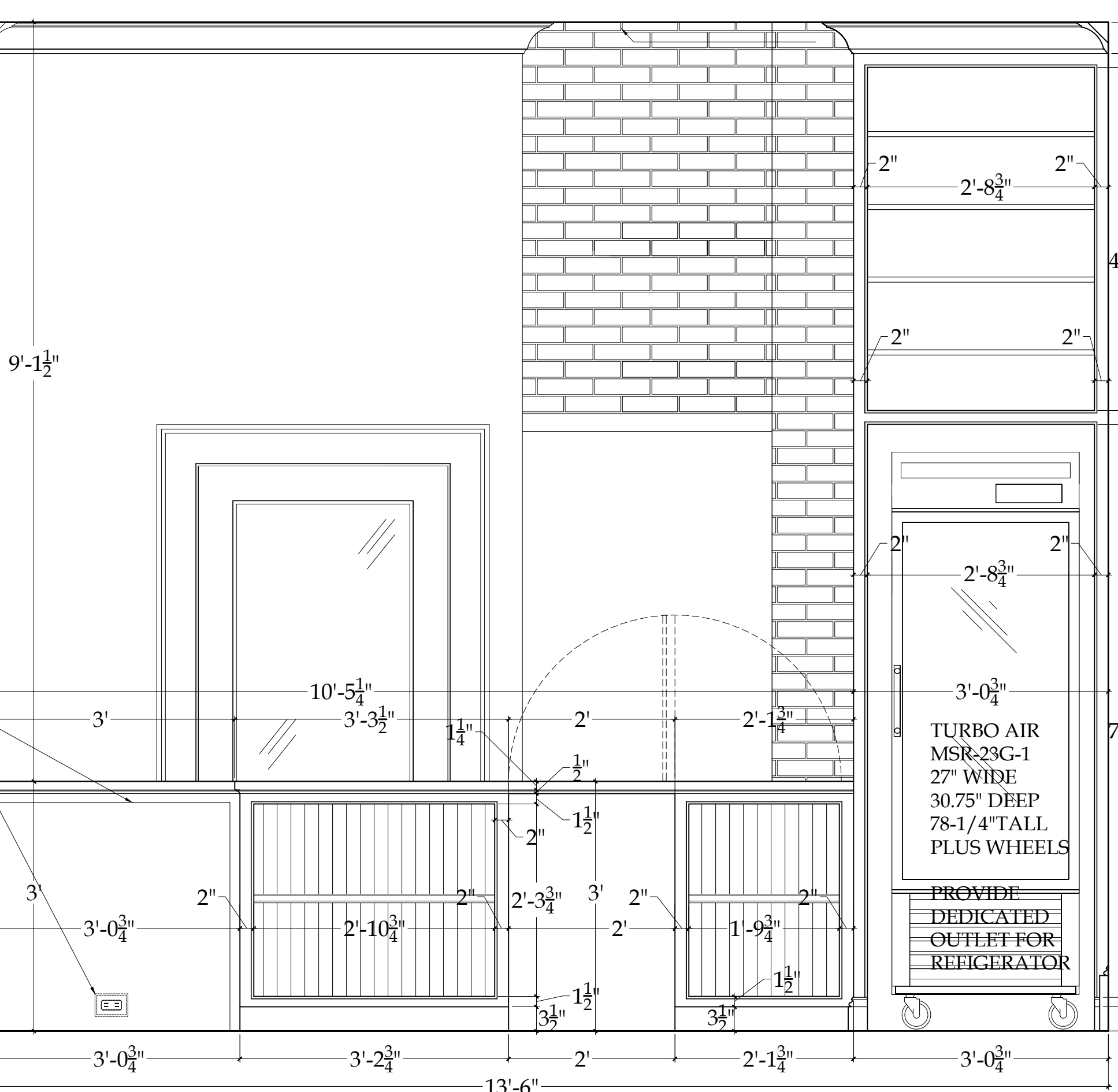
4  
1-1.6  
GENERAL STORE: NORTH ELEV. FRONT COUNTER (CUSTOMER SIDE)  
Scale: 3/4"=1'-0"



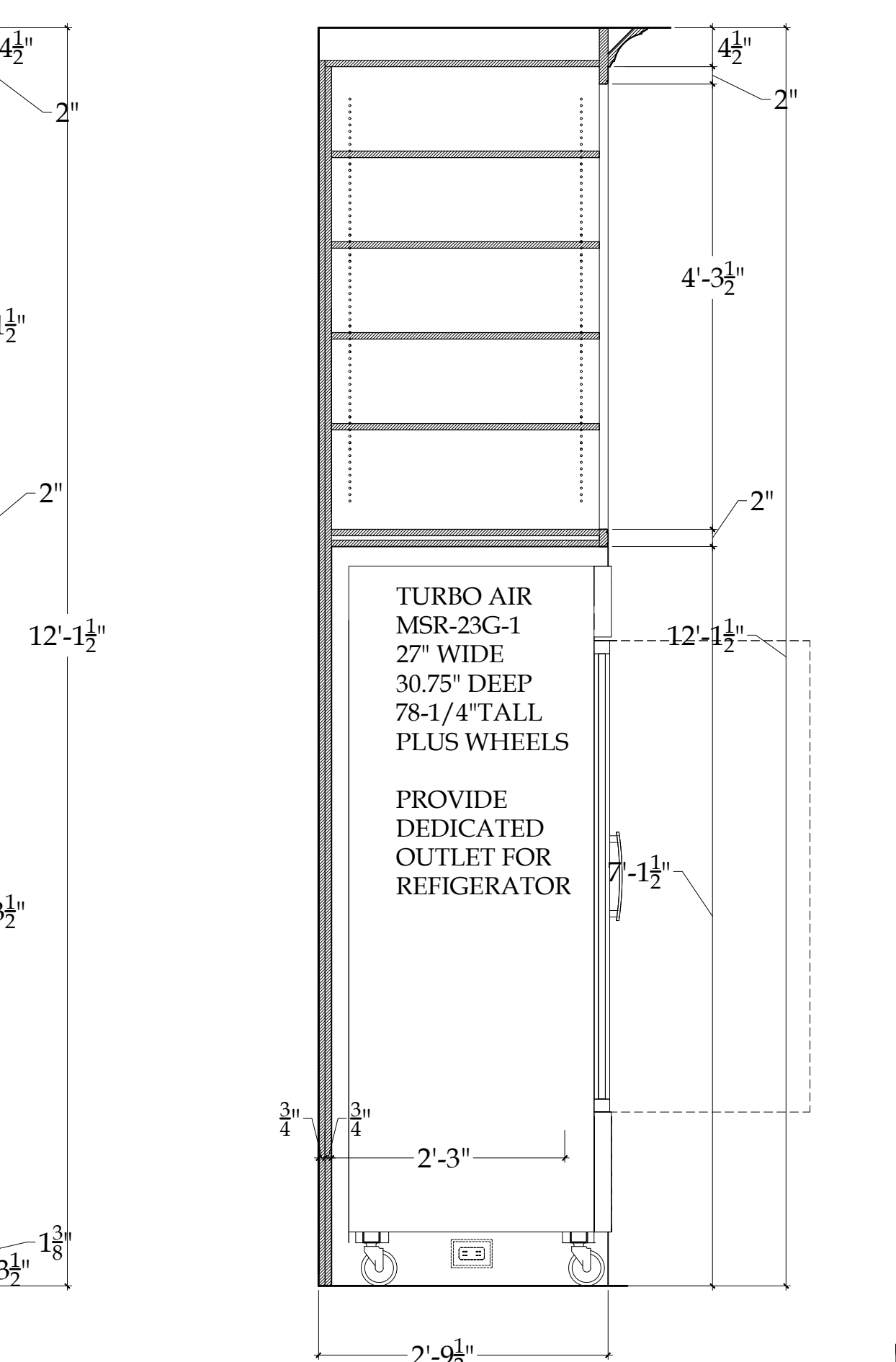
5  
1-1.6  
SECTION THRU MAIN COUNTER  
Scale: 3/4"=1'-0"



6  
1-1.6  
SECTION THRU MAIN COUNTER @ FREEZER  
Scale: 3/4"=1'-0"



7  
1-1.6  
GENERAL STORE: SOUTH ELEV. FRONT COUNTER (SERVICE SIDE)  
Scale: 3/4"=1'-0"



8  
1-1.6  
GENERAL STORE: SECTION THRU TALL STORAGE CABINET  
Scale: 3/4"=1'-0"

ALL CABINERY FACES & CABINET DOORS MIN. 1" THICK  
 ALL CABINERY BACKS MIN. 1/2". (THICKER IF STRUCTURE REQUIRES)  
 ALL OPEN SHELVING TO HAVE 1/2" BEADED BOARD BACKS  
 ALL CABINERY PAINT GRADE, BRUSH PAINTED ON SITE IN OIL  
 INTERIOR OF CLOSED CABINETS CAN BE PREFINISHED MAPLE OR SIMILAR, WITH 3/4" PREFINISHED SHELVING (PLEASEURE ENSURE 3/4" THICKNESS WILL NOT BEND FROM WEIGHT OR LENGTH OF SHELF)  
 PAINT ALL EXPOSED BRICK  
 BACK OF ALL OPEN CABINERY  
 SEE FULL SCALE STEPPED PANEL MOULDING FOR DOOR PANELS, WALL PANELS, & RECESSED PANELS,  
 ALL OPEN SHELVING SURROUNDS HAVE A BEAD DETAIL AT OPENING, SEE FULL SCALE PROFILE  
 DOUBLE SIDED COUNTER TO HAVE 1-1/4" WALNUT TOP (OR SIMILAR HARDWOOD) STAINED AND FINISHED IN OIL BAED SATIN FINISH POLYURETHANE, 2 COATS MINIMUM  
 COUNTER, UNDER WINDOWS, HONED AND SEALED CARRARA MARBLE 1-1/4" SLAB

AVANTCO ICF7-HC 33 7/8" FLAT TOP DISPLAY FREEZER. WIDTH: 33 7/8", DEPTH: 21 1/4" HEIGHT: 33" OR SIMILAR. PROVIDE DEDICATED OUTLET

86 PONDFIELD ROAD WEST, BRONXVILLE, NEW YORK 10708

DIAMOND COVE GENERAL STORE  
 GENERAL STORE  
 INTERIOR ELEVATIONS

© COPYRIGHT 2017  
 NASTASI VAIL DESIGN, LLC  
 THIS DRAWING IS THE PROPERTY OF THE ARCHITECT AND SHALL NOT BE REPRODUCED OR TRANSMITTED IN ANY FORM OR BY ANY MEANS, ELECTRONIC OR MECHANICAL, WITHOUT THE WRITTEN PERMISSION OF THE ARCHITECT.

MRS. ALEXANDRA WIGHT  
 GENERAL STORE, GREAT DIAMOND ISLAND  
 PORTLAND, MAINE 04109

DATE 1/24/18  
 SCALE 3/4"=1'-0"  
 SHEET NO. I1.6

REVISIONS  
 DATE REMARKS

