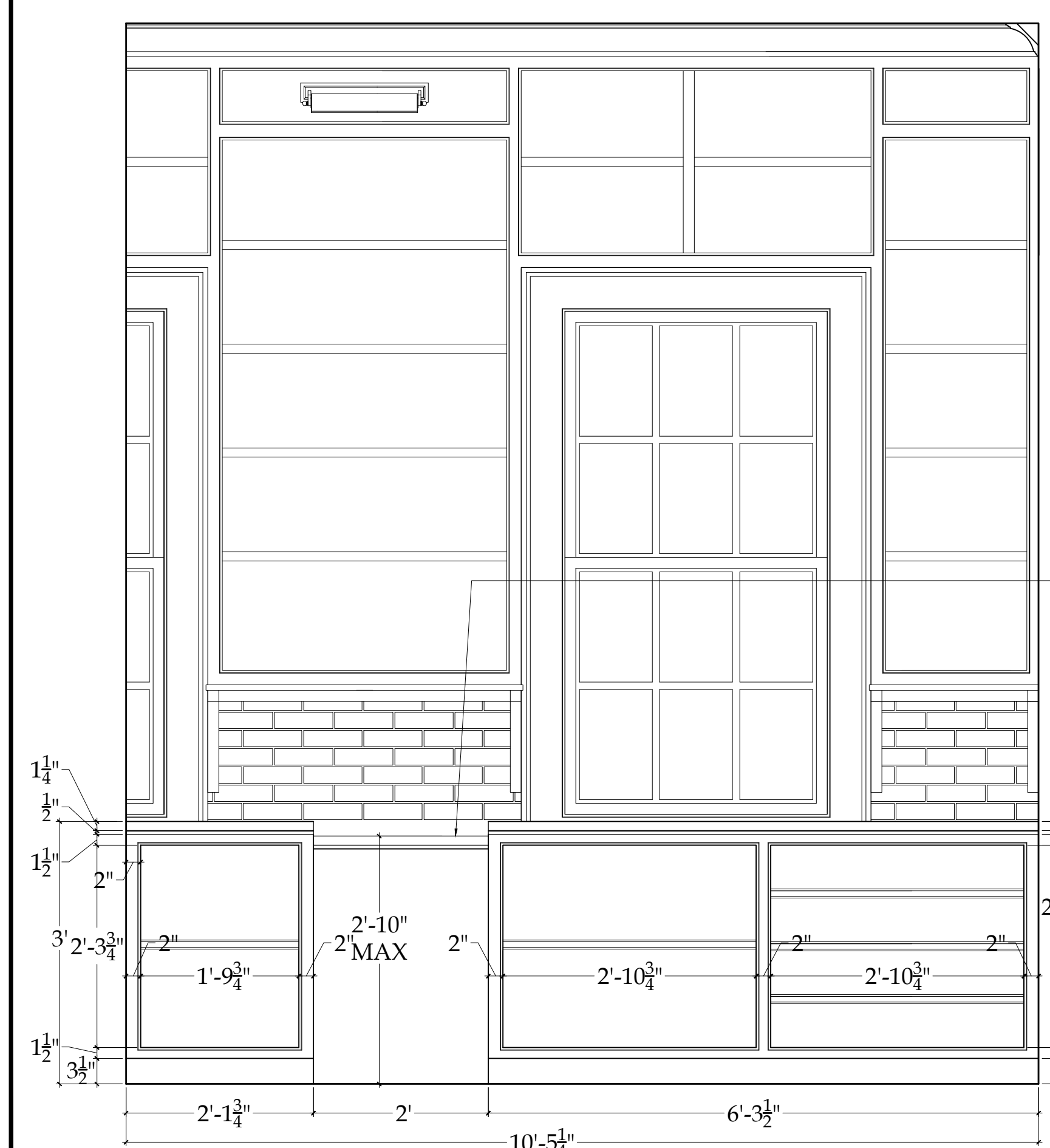


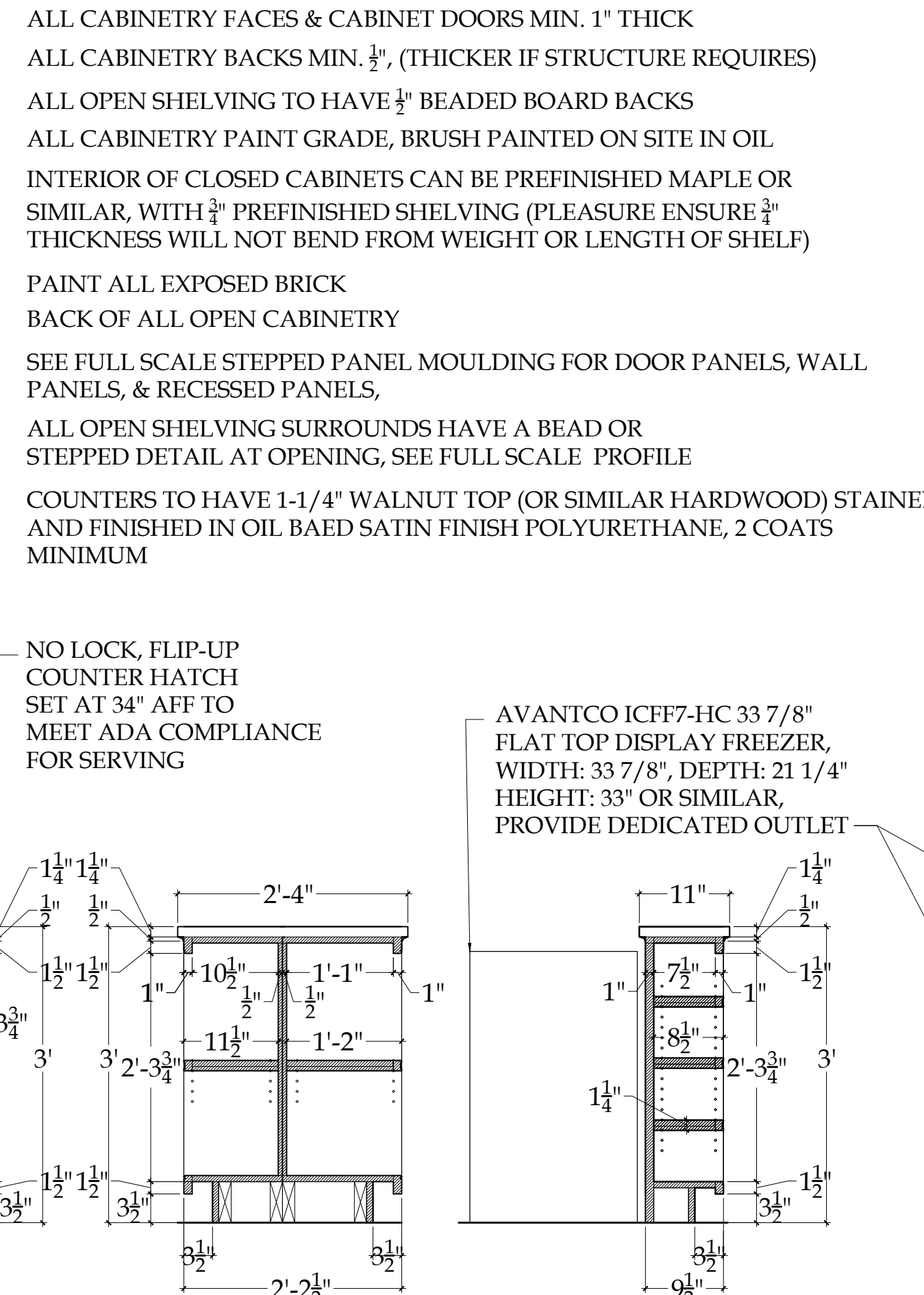
1
1-1.6
GENERAL STORE: SECTION OF CABINERY BEHIND MAIN COUNTER
Scale: 3/4"=1'-0"

2
1-1.6
GENERAL STORE: NORTH ELEV. BEHIND MAIN COUNTER
Scale: 3/4"=1'-0"

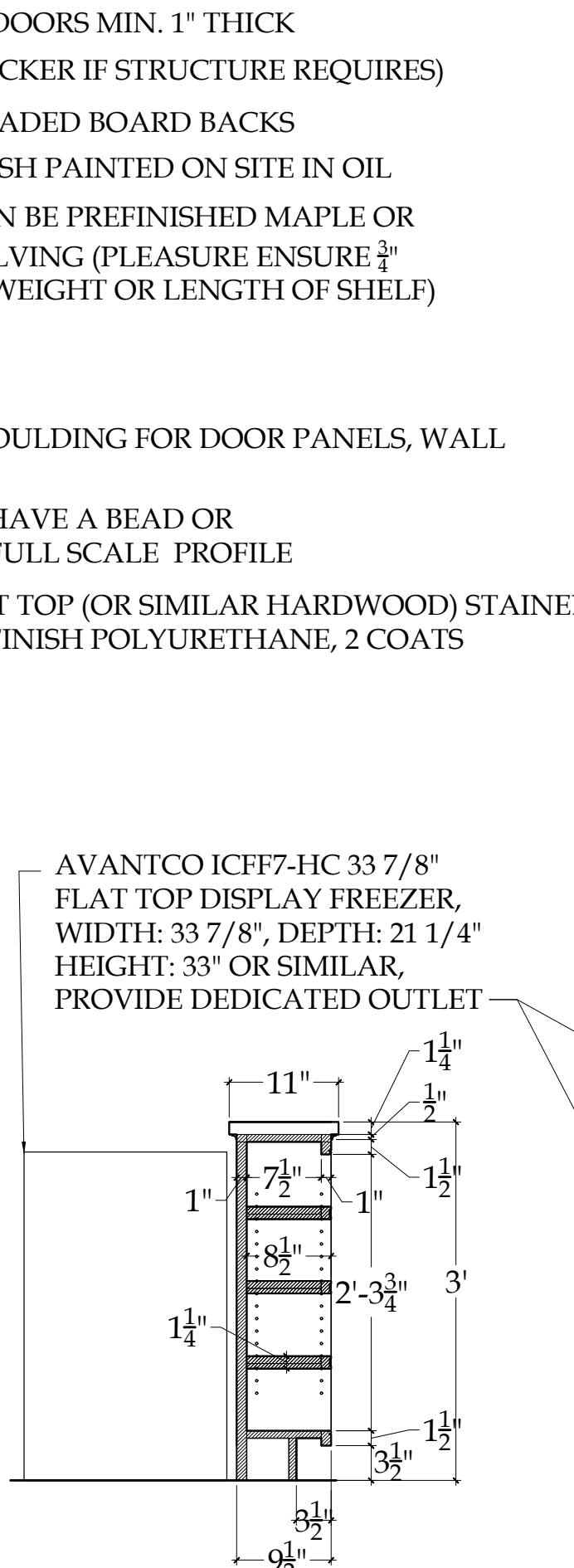
3
1-1.6
GENERAL STORE: NORTH ELEV. BEHIND MAIN COUNTER
Scale: 3/4"=1'-0"



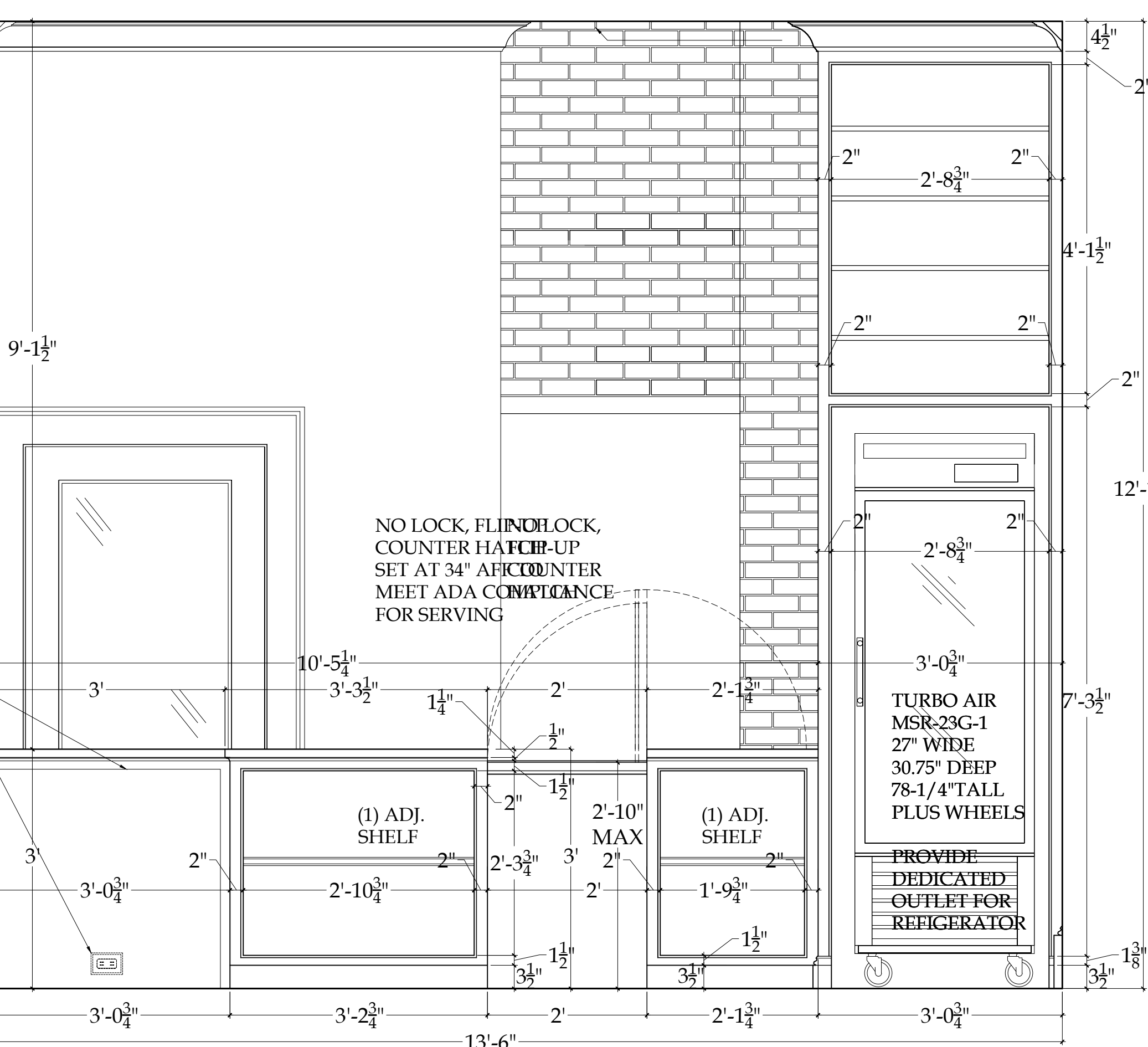
4
1-1.6
GENERAL STORE: NORTH ELEV. FRONT COUNTER (CUSTOMER SIDE)
Scale: 3/4"=1'-0"



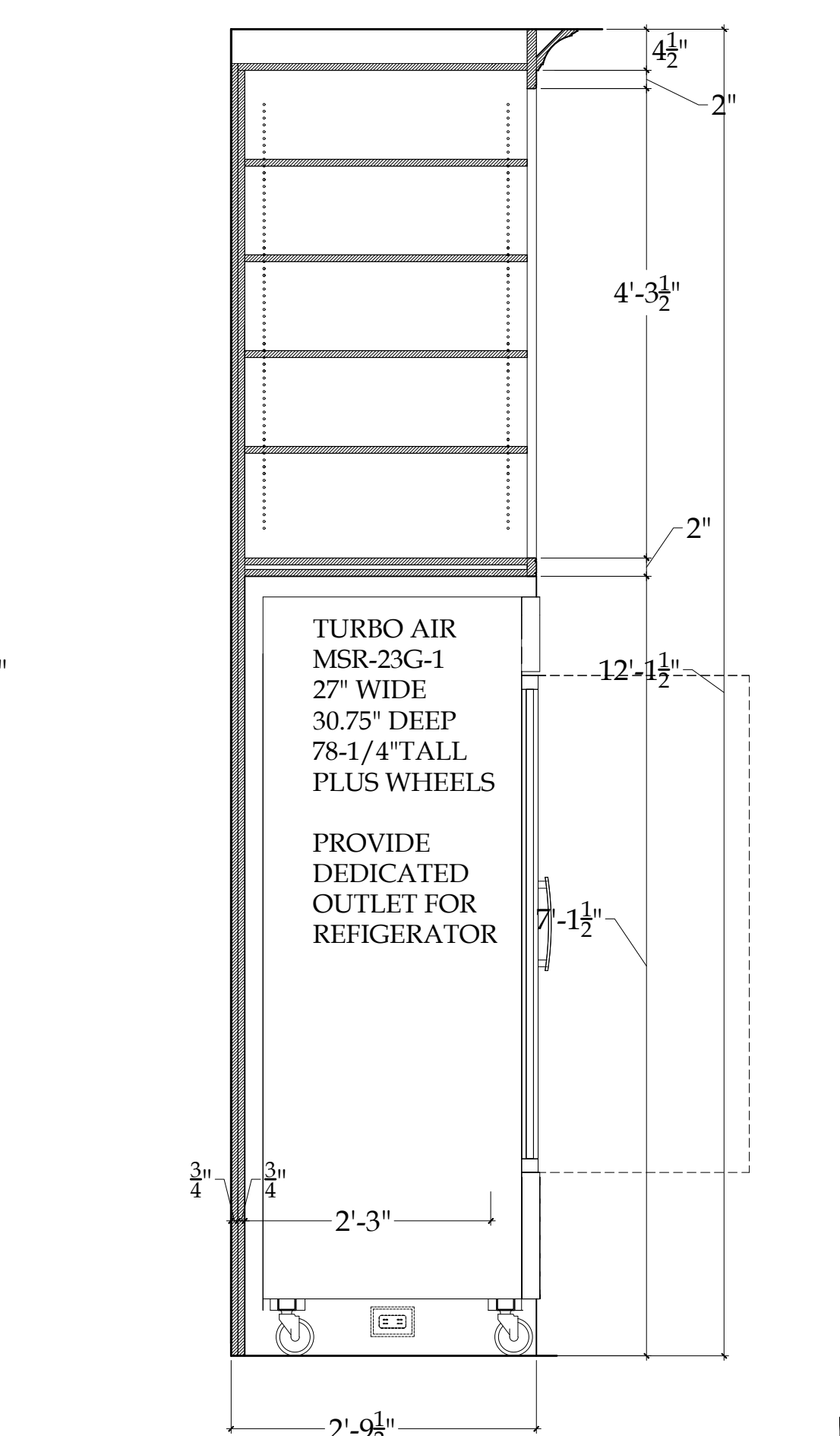
5
1-1.6
SECTION THRU MAIN COUNTER
Scale: 3/4"=1'-0"



6
1-1.6
SECTION THRU MAIN COUNTER @ FREEZER
Scale: 3/4"=1'-0"



7
1-1.6
GENERAL STORE: SOUTH ELEV. FRONT COUNTER (SERVICE SIDE)
Scale: 3/4"=1'-0"



8
1-1.6
GENERAL STORE: SECTION THRU TALL STORAGE CABINET
Scale: 3/4"=1'-0"

ALL CABINERY FACES & CABINET DOORS MIN. 1" THICK
 ALL CABINERY BACKS MIN. 1/2". (THICKER IF STRUCTURE REQUIRES)
 ALL OPEN SHELVING TO HAVE 1/2" BEADED BOARD BACKS
 ALL CABINERY PAINT GRADE, BRUSH PAINTED ON SITE IN OIL
 INTERIOR OF CLOSED CABINETS CAN BE PREFINISHED MAPLE OR SIMILAR, WITH 3/4" PREFINISHED SHELVING (PLEASEURE ENSURE 3/4" THICKNESS WILL NOT BEND FROM WEIGHT OR LENGTH OF SHELF)
 PAINT ALL EXPOSED BRICK
 BACK OF ALL OPEN CABINERY
 SEE FULL SCALE STEPPED PANEL MouldING FOR DOOR PANELS, WALL PANELS, & RECESSED PANELS,
 ALL OPEN SHELVING SURROUNDS HAVE A BEAD OR STEPPED DETAIL AT OPENING, SEE FULL SCALE PROFILE
 COUNTERS TO HAVE 1-1/4" WALNUT TOP (OR SIMILAR HARDWOOD) STAINED AND FINISHED IN OIL BAED SATIN FINISH POLYURETHANE, 2 COATS MINIMUM

NO LOCK, FLIP-UP COUNTER HATCH SET AT 34" AFF TO MEET ADA COMPLIANCE FOR SERVING

AVANTCO ICFF7-HC 33 7/8" FLAT TOP DISPLAY FREEZER, WIDTH: 33 7/8", DEPTH: 21 1/4" HEIGHT: 33" OR SIMILAR, PROVIDE DEDICATED OUTLET

NO LOCK, FLIP-UP COUNTER HATCH SET AT 34" AFF TO MEET ADA COMPLIANCE FOR SERVING

TURBO AIR MSR-23G-1 27" WIDE 30.75" DEEP 78-1/4" TALL PLUS WHEELS
 PROVIDE DEDICATED OUTLET FOR REFRIGERATOR

86 PONDFIELD ROAD WEST, BRONXVILLE, NEW YORK 10708

255 DIAMOND AVENUE
 GENERAL STORE
 INTERIOR ELEVATIONS



REVISIONS
 DATE REMARKS

© COPYRIGHT 2017
 NASTASI VAIL DESIGN, LLC
 THIS DRAWING IS THE PROPERTY OF THE ARCHITECT AND MAY NOT BE REPRODUCED OR TRANSMITTED IN ANY FORM OR BY ANY MEANS WITHOUT THE WRITTEN PERMISSION.

MRS. ALEXANDRA WIGHT
 255 DIAMOND AVENUE
 PORTLAND, MAINE 04109

DATE 3/19/18
 SCALE 3/4"=1'-0"
 SHEET NO. I1.6