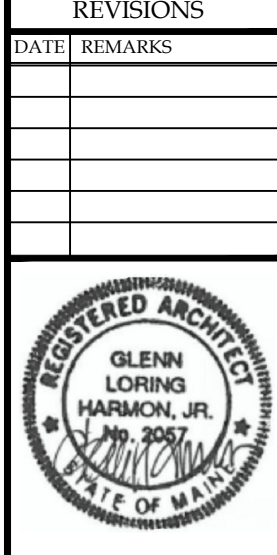


REVISIONS

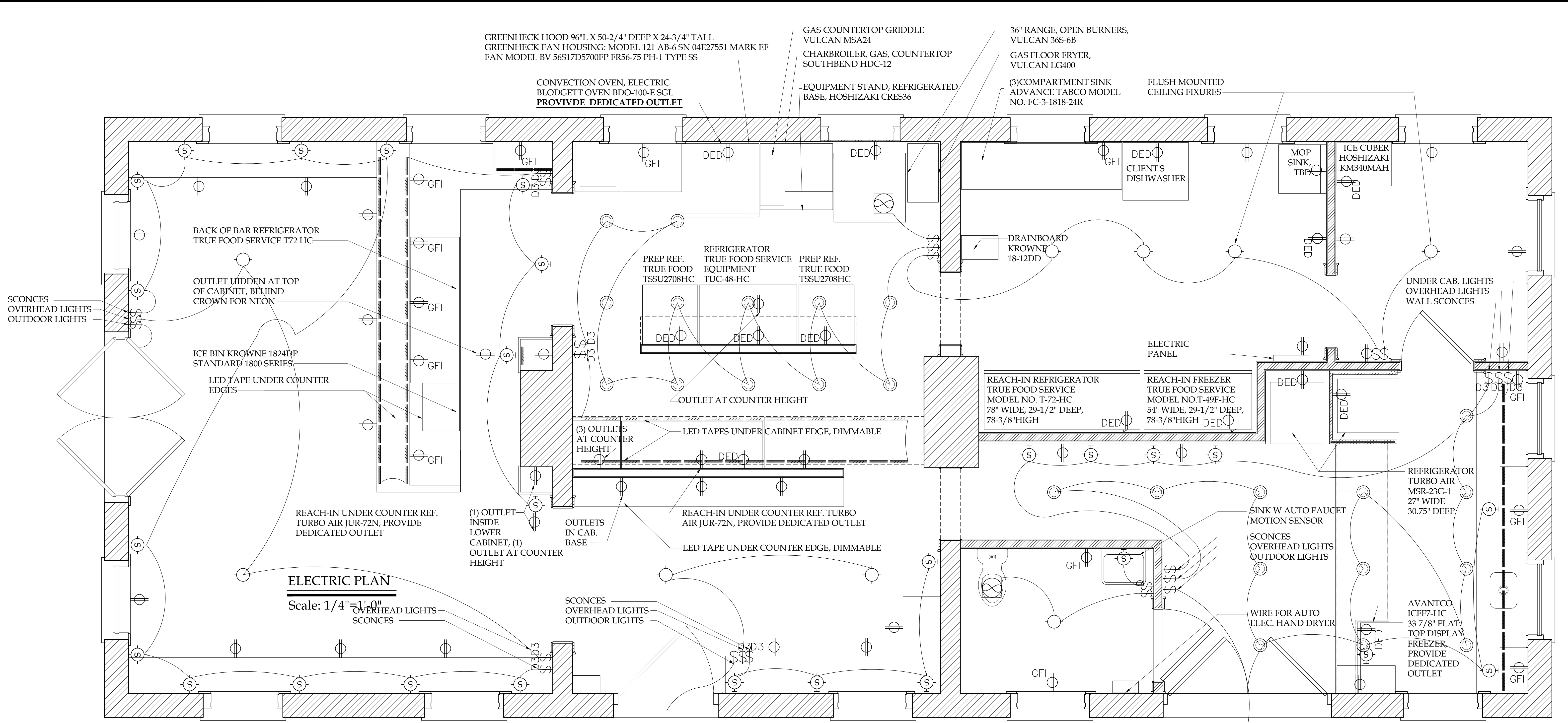
DATE	REMARKS



255 DIAMOND AVENUE
ELECTRICAL PLAN VIEW
FINAL

© COPYRIGHT 2018 BY NASTASI VAIL DESIGN. THIS DRAWING IS THE PROPERTY OF THE DESIGNER AND MAY NOT BE REPRODUCED OR TRANSMITTED IN ANY FORM OR BY ANY MEANS WITHOUT THE WRITTEN PERMISSION OF THE DESIGNER.

MRS. ALEXANDRA WIGHT
255 DIAMOND AVENUE
PORTLAND, MAINE 04109
DATE: 3/19/18
SCALE: 1/2"=1'-0"
SHEET NO: E1.1



ELECTRIC PLAN
Scale: 1/4"=1'-0"

1 ELECTRIC PLAN
E-1.1 Scale: 1/2"=1'-0"

ELECTRICAL NOTES

ELECTRICAL PLANS ARE FOR DESIGN INTENT ONLY.
ELECTRICIANS ARE RESPONSIBLE FOR SIZING ALL SERVICES AND CONFORMANCE WITH ALL CODES.
CONTRACTOR RESPONSIBLE FOR ALL MECHANICAL, SECURITY AND ELECTRICAL SERVICE REQUIREMENTS.
CONTRACTOR TO FIELD VERIFY ALL EXISTING MECHANICAL, ELECTRICAL, AND SECURITY SYSTEMS ARE CODE CONFORMING.
CONTRACTOR TO VERIFY LIGHT/CIRCUIT LOADS AND COORDINATE CHANGES NEEDED WITH OWNER & DESIGNER.
ALL OUTLETS IN WET AREAS TO HAVE GROUND FAULT INTERRUPTS (GFI).
ALLOW PLENTY OF SLACK IN WIRES FOR FLEXIBILITY IN MOVEMENT.
WHERE EVER POSSIBLE, REUSE EXISTING OUTLETS AND SWITCHING LOCATIONS.

ELECTRICAL KEY

\$	SINGLE POLE SWITCH	⊕	DUPLEX OUTLET
\$3	3-WAY SINGLE POLE SWITCH	⊕	SWITCHED DUPLEX OUTLET
\$4	4-WAY SINGLE POLE SWITCH	⊕ DED	DEDICATED OUTLET
\$6	DIMMER SWITCH	⊕ GFI	GROUND FAULT INTERRUPT
\$WP	WATERPROOF SWITCH	⊕ R/D	RANGE/DRYER OUTLET
○	PUK LIGHTING OR UNDER CABINET	⊕ 42"	DUPLEX OUTLET DIM OFF FLOOR
⊙	CARBON DETECTOR	⊕	SPECIAL PURPOSE CONNECTION
⊙	SMOKE DETECTOR	⊕	FLOOR MOUNTED DUPLEX OUTLET
⊙	4"Ø RECESSED CEILING MOUNTED FIXTURE	▲	TELEPHONE JACK
⊙	CEILING SURFACE MOUNTED FIXTURE	□	SATELLITE DISH
⊙	WALL MOUNTED FIXTURE	□	WALL MOUNTED EXHAUST FAN
⊙	6"Ø RECESSED CEILING MOUNTED FIXTURE	■	REMOTE EXHAUST FAN
△	OUTDOOR SPOT LIGHTS	⊕	DOOR BELL BUTTON
▲	TRACK LIGHTING	⊕	FLUSH MOUNTED WALL SPEAKERS
⊕	EXTERIOR WALL LIGHT	⊕	CABLE CONNECTION
⊕	CEILING FAN LIGHT	⊕	THERMOSTAT
⊕	CEILING FAN NO LIGHT	⊕	GARAGE DOOR OPENER
⊕	LED STRIP TAPE, DIMMABLE	⊕	HOME MONITORING SYSTEM

ALL DIMENSIONS MUST BE VERIFIED IN THE FIELD PRIOR TO CONSTRUCTION