

5 SECTION C
SCALE: 3/8"=1'-0"



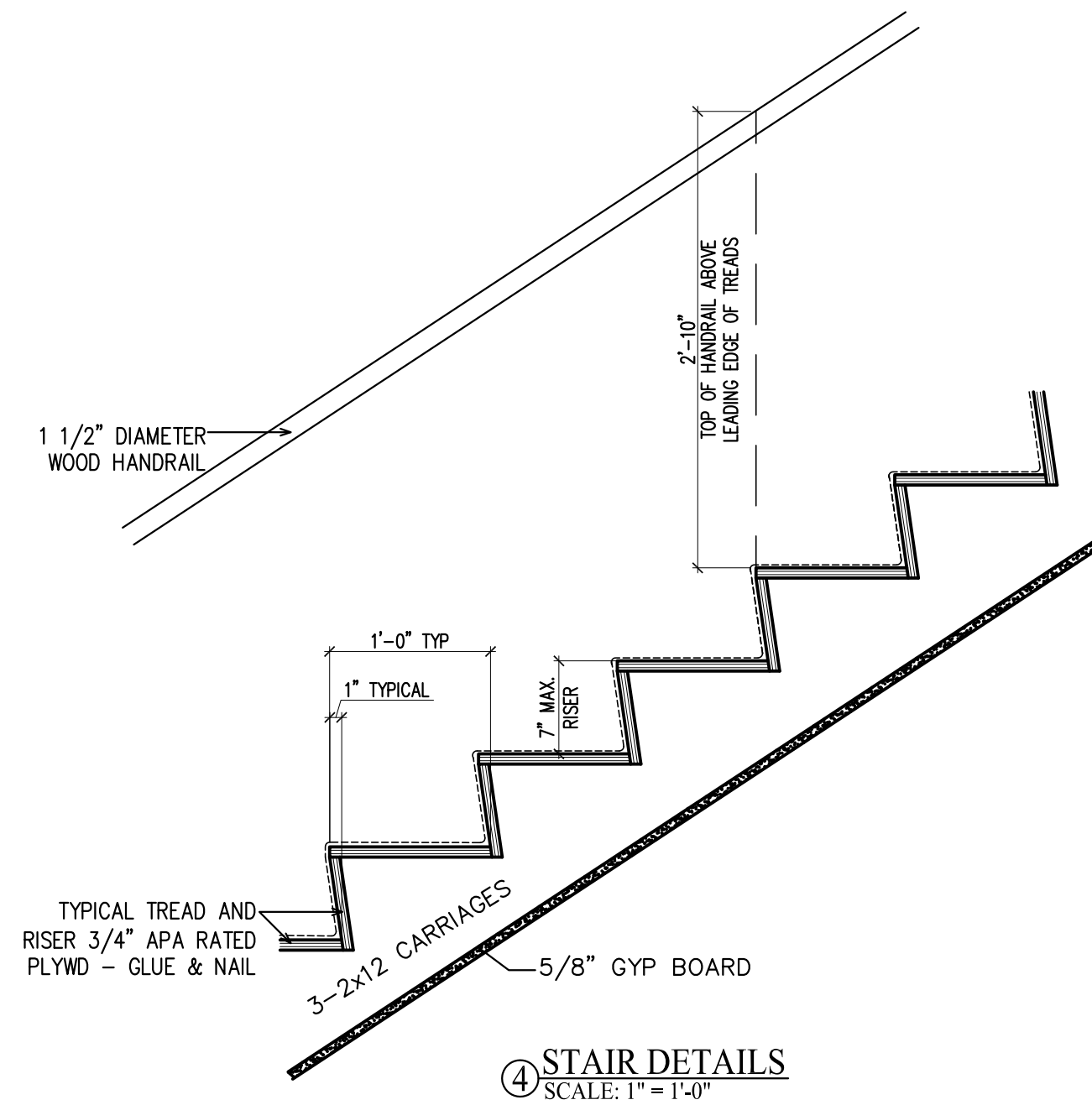
5 SECTION C
SCALE: 3/8"=1'-0"

6 SECTION D
SCALE: 3/8"=1'-0"

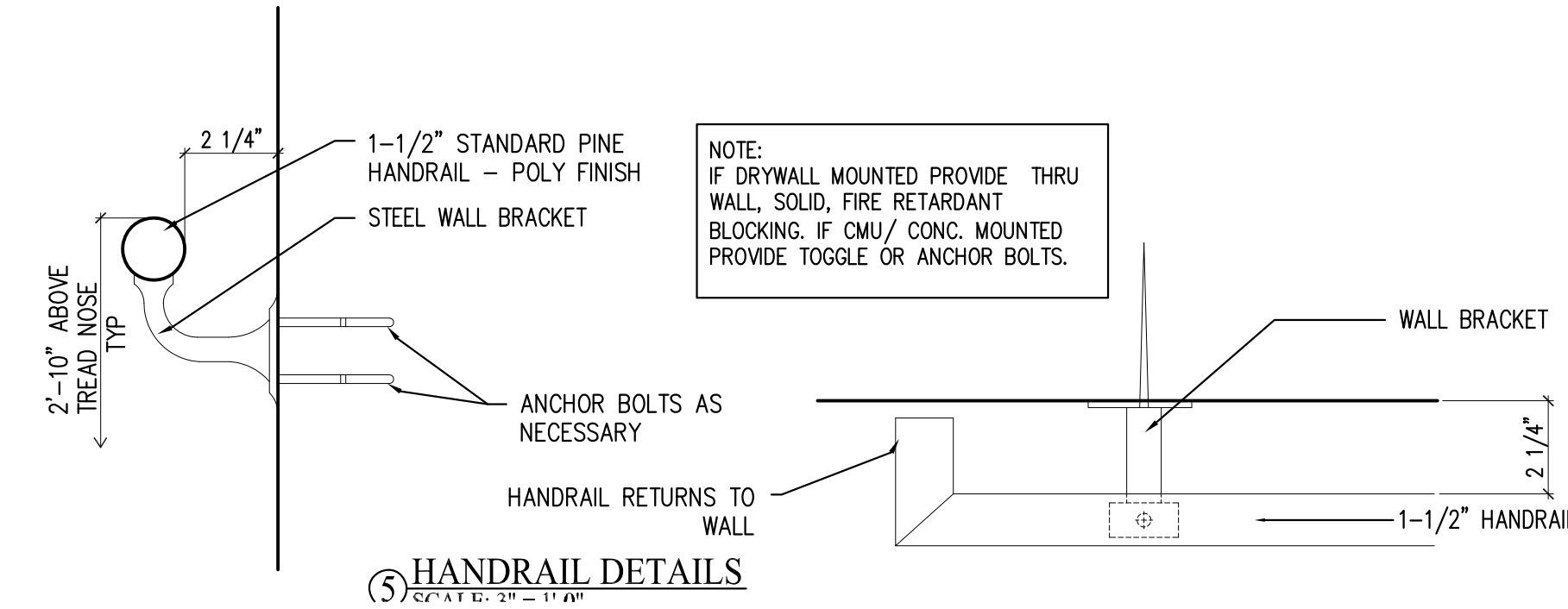


6 SECTION D
SCALE: 3/8"=1'-0"

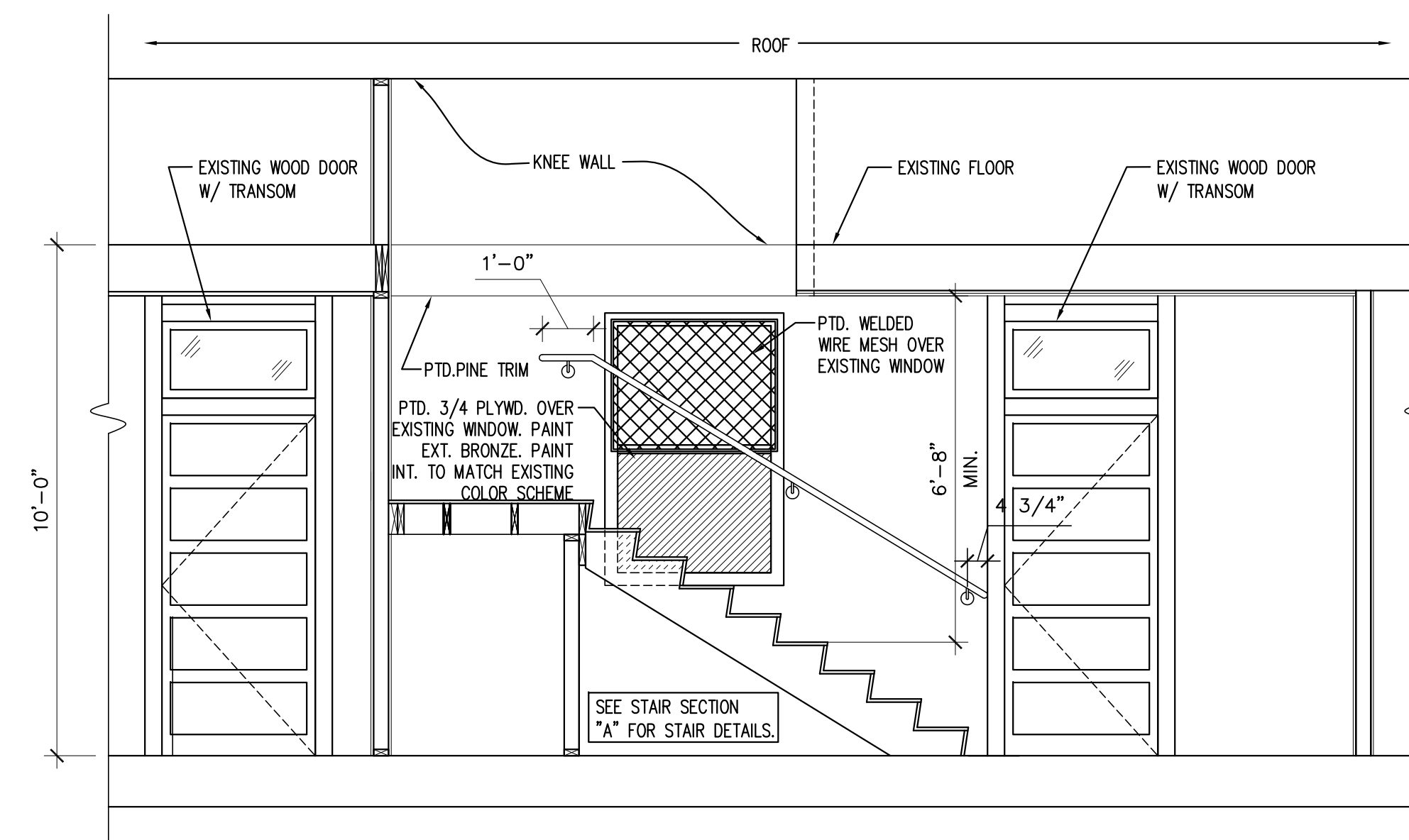
4 STAIR DETAILS
SCALE: 1"=1'-0"



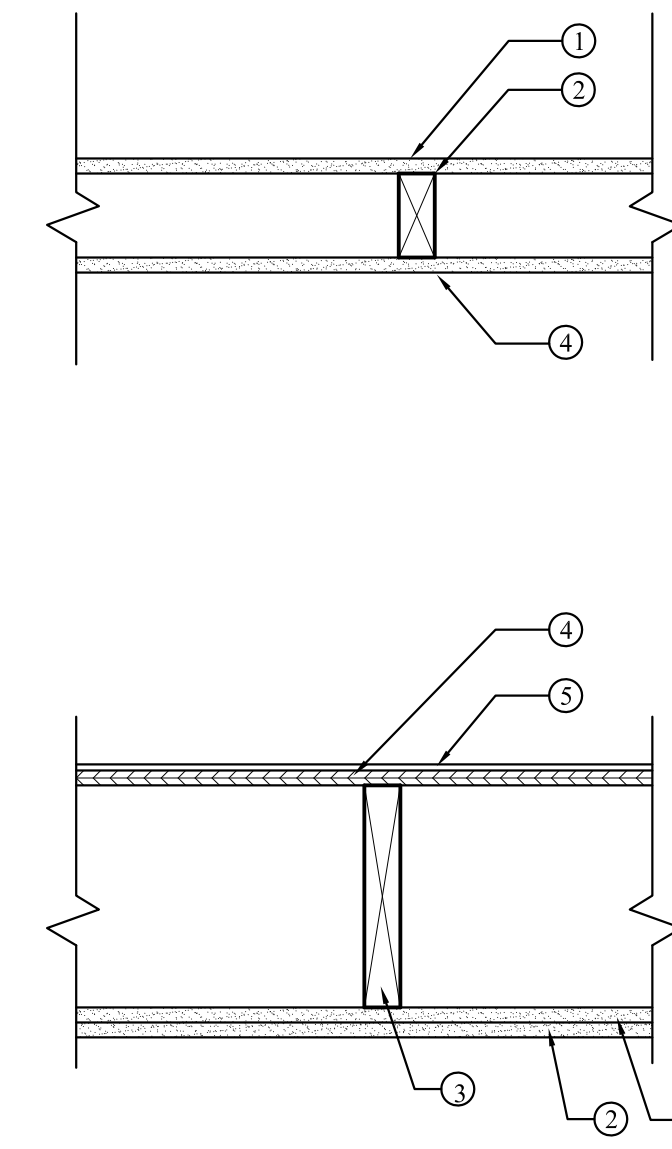
2 HANDRAIL DETAILS
SCALE: 3/8"=1'-0"



1 ELEVATION
SCALE: 3/8"=1'-0"



3 WALL & CEILING TYPES
SCALE: 1"=1'-0"



- W1 1-HOUR RATED WALL ASSEMBLY**
UL Design No. U305
1. Layer 5/8" type X gypsum wallboard.
 2. 2x4 Wood studs 16" O.C.
 3. Screws 6" O.C.
 4. Layer 5/8" type X gypsum wallboard.
 5. Joints finished.
 6. (1) coat latex primer & (2) coats latex eggshell white.
- W2 1-HOUR RATED WALL ASSEMBLY**
1. Similar to W1 with bead board & matching paint on tag side.
- W3 1-HOUR RATED WALL ASSEMBLY**
1. 6-foot partial height wall similar to W1 with bead board & matching paint on tag side.
- RC-1 ROOF/CEILING ASSEMBLY**
1 HOUR RATED Membrane Protection
GA File RC 2601
1. Base layer 5/8" type X gypsum wallboard applied at right angles to 2 x 10 wood joists 24" o.c. with 1 1/4" Type W or S drywall screws 24" o.c.
 2. Face layer 5/8" type X gypsum wallboard or gypsum veneer base applied at right angles to joists with 1 7/8" Type W or S drywall screws 12" o.c. at joints and intermediate joints and 1 1/2" Type G drywall screws 12" o.c. placed 2" back on either side of end joints. Joints offset 24" from base layer joints.
 3. 2x10 Wood joists / rafters
 4. 1/2" plywood with exterior glue applied at right angles to joists with 8d nails.
 5. Roofing
- RC-2 ROOF/CEILING ASSEMBLY**
1 HOUR RATED Membrane Protection
GA File RC 2601
1. Similar to RC-1 with bead board painted to match existing on tag side.
- RC-3 CEILING ASSEMBLY**
1 HOUR RATED Membrane Protection
GA File RC 3406
1. Similar to RC-1 without roofing.

LICENSED ARCHITECT
DAVID LLOYD
No. 01348
STATE OF NEW HAMPSHIRE

Prepared For: **Bateman Partners LLC**
PO Box 3572
Portland, Maine

Architect: **ARCHETYPE architects**
48 Union Wharf Portland, Maine 04101
(207) 772-6022 Fax (207) 772-4056

Project: **Diamond's Edge Restaurant**
2nd Floor Egress Stair
Great Diamond Island
Portland, Maine

Revisions:

Date: 17 April 2014
Scale: AS NOTED

SECTIONS AND DETAILS

A2.01

