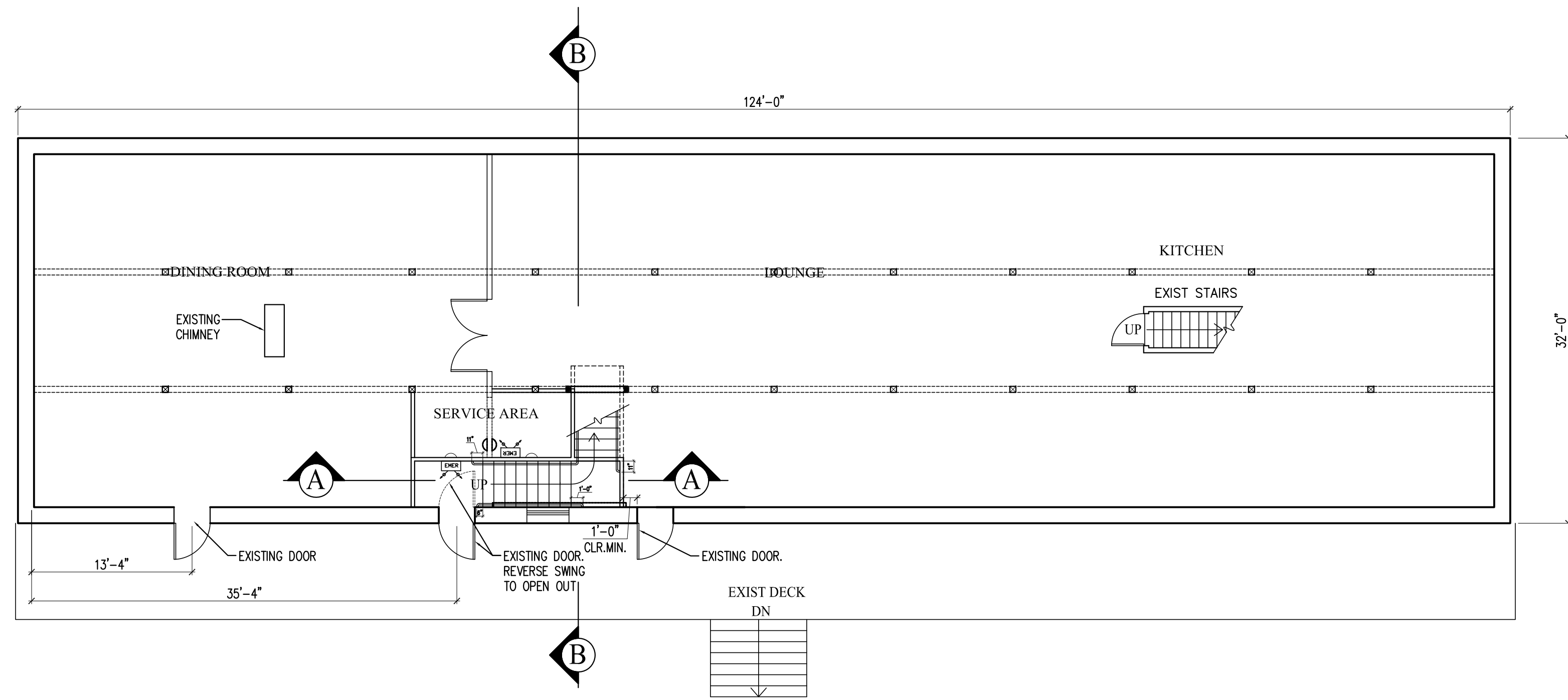


SYMBOL LEGEND:

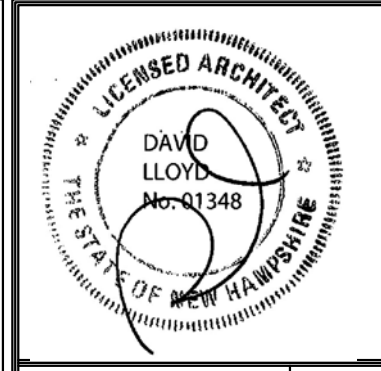
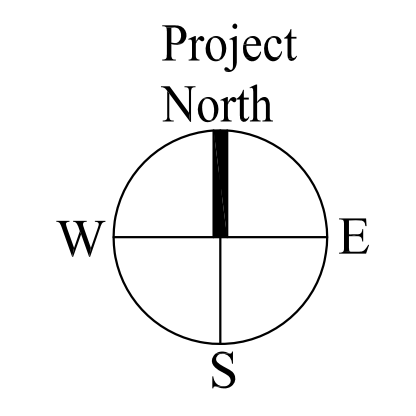
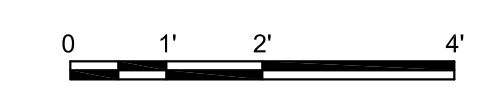
EMER EMERGENCY LIGHT

EXIT SIGN

2 SECOND FLOOR LIFE SAFETY PLAN
SCALE: 1/8"=1'-0"

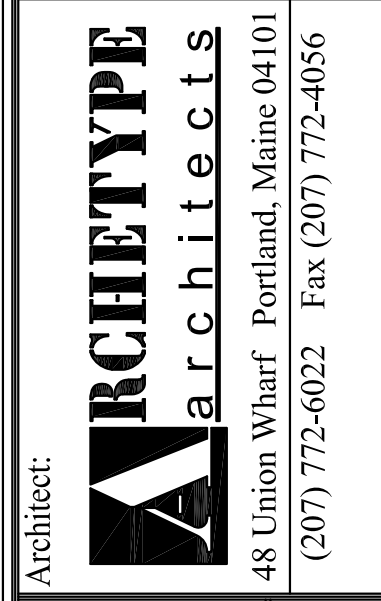


1 FIRST FLOOR LIFE SAFETY PLAN
SCALE: 1/8"=1'-0"



Prepared For:
Bateman Partners LLC
PO Box 3572
Portland, Maine

Consulting Engineer:



Project:
Diamond's Edge Restaurant
2nd Floor Egress Stair
Great Diamond Island
Portland, Maine

Revisions:

| | |
|--|--|
| | |
| | |
| | |
| | |
| | |

Date: 17 April 2014
Scale: AS NOTED
LIFE SAFETY PLAN

A0.01