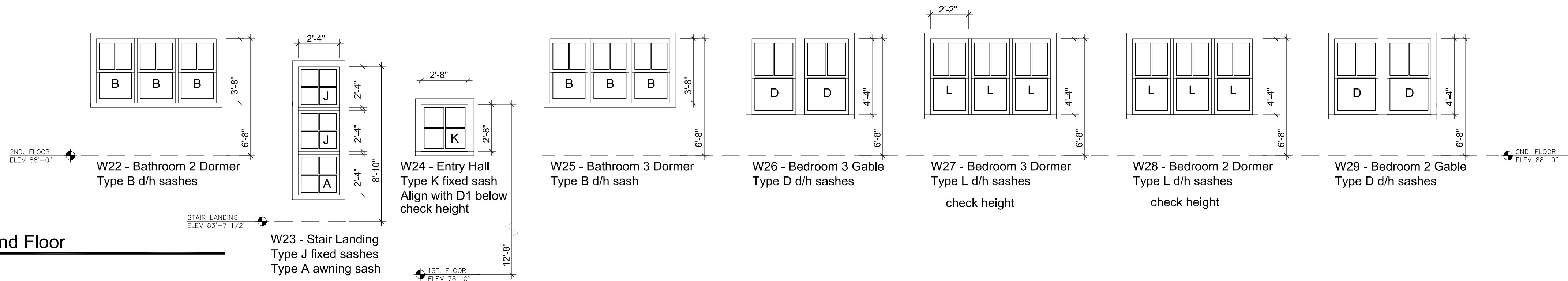
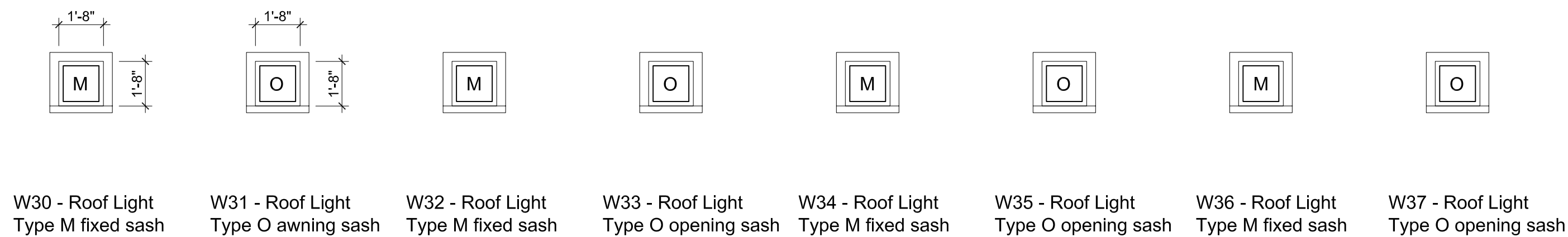


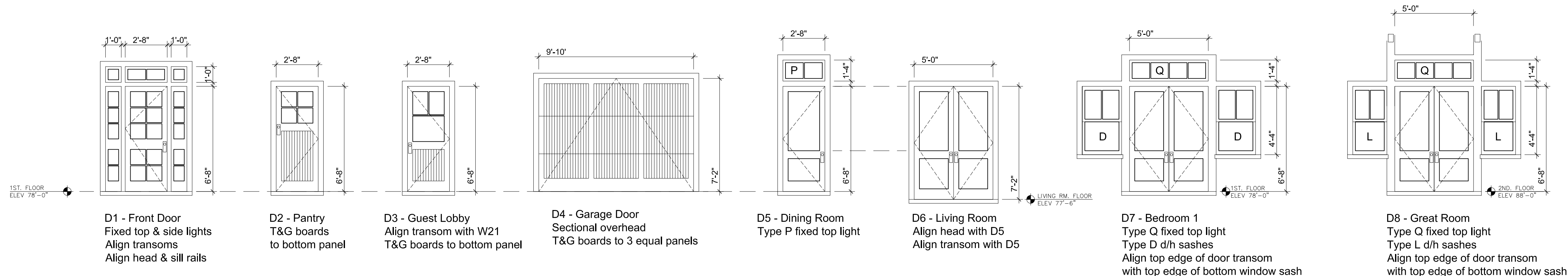
1 WINDOWS - 1st. Floor  
1/4" = 1'-0"



2 WINDOWS - 2nd Floor  
1/4" = 1'-0"



3 WINDOWS - Octagonal Roof Light  
1/4" = 1'-0"



4 EXTERIOR DOORS  
1/4" = 1'-0"

PROPOSED HOUSE  
for SUSAN & JOHN KINSEY  
at LOT 69, GREAT DIAMOND ISLAND, MAINE

TFH ARCHITECTS  
100 COMMERCIAL STREET  
PORTLAND MAINE 04101  
TELEPHONE 207 775 6141  
ARCHITECTURE PLANNING

REVISIONS:

DATE: September 3, 2004  
PROJECT No. 0321  
DRAWN BY: RTL  
CHECKED BY: TST  
SCALE: AS NOTED

SHEET TITLE:  
EXTERIOR  
WINDOWS

A 2.3

PROGRESS PRINT ONLY  
Not for Construction