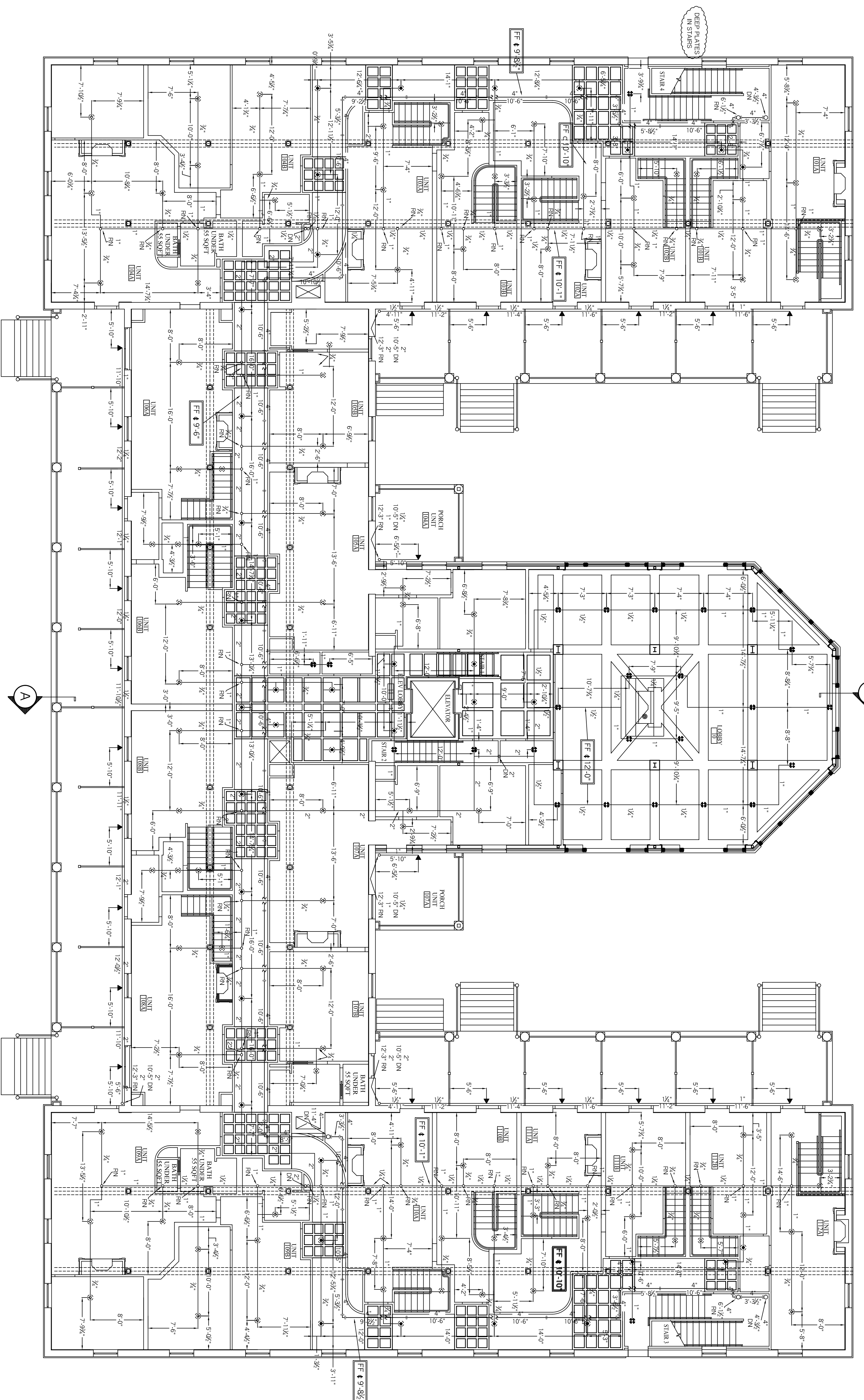


HYDRAULIC DATA:			
LOBBY ENTRANCE			
BASIS OF DESIGN NFPA 13			
DENSITY	AREA OF COVERAGE		
.1	950		
TOTAL THREAD		TEMP	
SPRINKLERS		10	112"
SYSTEM DEMAND AT PUMP OUTLET:		155	
PRESSURE FLOW HOSE		63.339	
PRESSURE FLOW HOSE		261.835	
PRESSURE FLOW HOSE		100	
SAFETY MARGIN: 6.264			
OCCUPANCY: HOTEL LOBBY			



FIRST FLOOR

LEGEND

- HANGER
- RISE OR DROP NIPPLE
- VERTICAL COUPLING
- FF k=XX FIN FLR TO CENTERLINE OF PIPE
- C k=XX CEILING TO CENTERLINE OF PIPE
- TJ k=TOP OF JOIST TO CENTERLINE OF PIPE
- BU k=BOTTOM OF JOIST TO CENTERLINE OF PIPE
- BB k=BOTTOM OF BEAM TO CENTERLINE OF PIPE
- ELEV k=OVL ELEVATION OF CENTERLINE OF PIPE

GENERAL NOTES

- ALL DIMENSIONS ARE CENTER TO CENTER U/N
- ALL THREADED PIPE TO BE SCH. 40 BLACK STEEL
- ALL SCREWED FITTINGS TO BE STD. WT. C.I. BLACK U/N
- ALL GROOVED PIPE TO BE SCH. 10 BLACK STEEL
- ALL OTHER PIPING TO BE CPVC PLASTIC
- ALL OTHER FITTINGS TO BE CPVC PLASTIC

SYSTEM DESIGN

A WET PIPE SYSTEM OF AUTOMATIC SPRINKLERS TO BE DESIGNED AND INSTALLED PER NFPA 13R
 ALL SPRINKLERS TO BE BASED ON LIGHT HAZARD
 MANUAL WET CLASS I STANDPIPE DESIGNED AND INSTALLED PER NFPA 14

- 24 VIKING VK305 OR WHITE SIDEWALL 1/2"x1/2" K=5.6
- 26 VIKING VK302 WHITE OR RECESSED PENDENTS 1/2"x1/2" K=5.6
- 36 VIKING VK468 RESIDENTIAL RECESSED PENDENTS 1/2"x1/2" K=4.9
- 90 VIKING VK456 RESIDENTIAL CONCEALED PENDENTS 1/2"x1/2" K=4.9

REVISION NUMBER	DATE	SUBMITTED BY	TITLE
		DRAWN BY	INN AT DIAMOND COVE
		APPROVED BY	McKINLEY COURT
		SCALE	GREAT DIAMOND ISLAND
		SHEET NO.	PORTLAND, MAINE