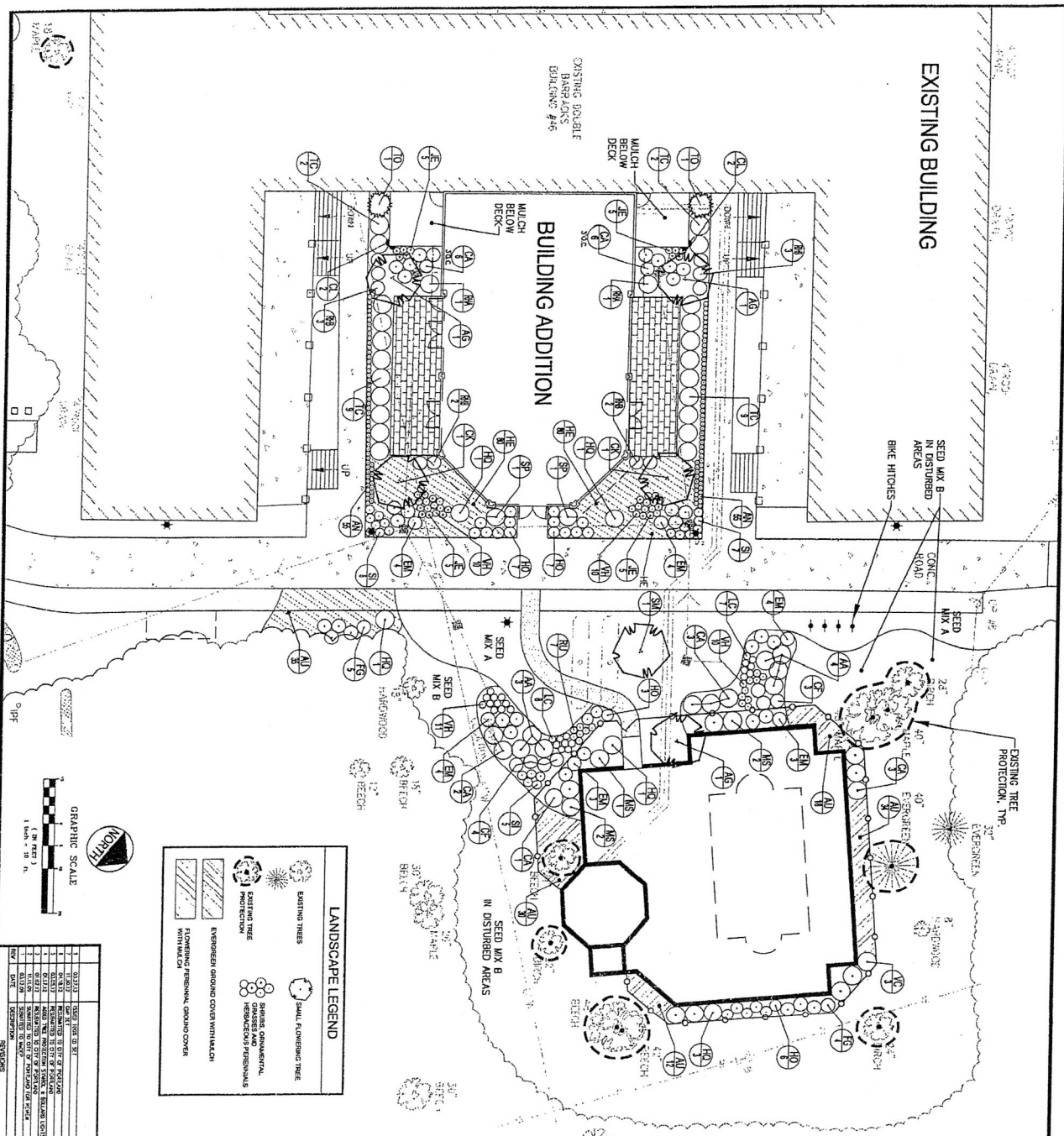


A2



LANDSCAPE LEGEND

- EXISTING TREES
- SMALL FLOWERING TREE
- SHRUBS, ORNAMENTAL HERBACEOUS PERENNIALS
- EXISTING TREE PROTECTION
- EXISTING PERENNIAL GROUND COVER WITH MULCH
- EXISTING PERENNIAL GROUND COVER

GRAPHIC SCALE
1" = 20'

LANDSCAPE LEGEND

EXISTING TREES

SMALL FLOWERING TREE

SHRUBS, ORNAMENTAL HERBACEOUS PERENNIALS

EXISTING TREE PROTECTION

EXISTING PERENNIAL GROUND COVER WITH MULCH

EXISTING PERENNIAL GROUND COVER

REVISIONS

NO.	DATE	DESCRIPTION
1	04/30/13	ISSUE FOR PERMITS
2	05/01/13	REVISED TO REFLECT PERMIT COMMENTS
3	05/01/13	REVISED TO REFLECT PERMIT COMMENTS
4	05/01/13	REVISED TO REFLECT PERMIT COMMENTS
5	05/01/13	REVISED TO REFLECT PERMIT COMMENTS
6	05/01/13	REVISED TO REFLECT PERMIT COMMENTS
7	05/01/13	REVISED TO REFLECT PERMIT COMMENTS
8	05/01/13	REVISED TO REFLECT PERMIT COMMENTS
9	05/01/13	REVISED TO REFLECT PERMIT COMMENTS
10	05/01/13	REVISED TO REFLECT PERMIT COMMENTS

THE INN AT DIAMOND COVE

LANDSCAPE PLAN

THE INN AT DIAMOND COVE, LLC

DATE: 04/30/13

SCALE: AS SHOWN

PROJECT: THE INN AT DIAMOND COVE

CLIENT: THE INN AT DIAMOND COVE, LLC

DESIGNER: DANIELA HOFFMAN ASSOCIATES, INC.

DATE: 04/30/13

SCALE: AS SHOWN

PROJECT: THE INN AT DIAMOND COVE

CLIENT: THE INN AT DIAMOND COVE, LLC

PLANT LIST

KEY	QTY	BOTANICAL NAME	COMMON NAME	SIZE	ROOT	SPACING	REMARKS
AG 3		<i>Andropogon glomeratus</i>	Andropogon	1 1/2' x 2' cal.	BBB		23' planted, see item
CK 2		<i>Coreopsis lanceolata</i>	Coreopsis	5'-6" H.	BBB		
SM 1		<i>Sisyrinchium albidum</i>	Sisyrinchium	5'-6" H.	BBB		
SHRUBS & ORNAMENTAL GRASSES							
AM 1		<i>Amorpha canescens</i>	Amorpha	18-24" H.	3 gal.	4' o.c.	
CK 21		<i>Calluna vulgaris</i>	Calluna	18-24" H.	3 gal.	4' o.c.	
FG 9		<i>Fragaria virginiana</i>	Fragaria	18-24" H.	3 gal.	3' o.c.	
HO 7		<i>Hesperis matronalis</i>	Hesperis	18-24" H.	3 gal.	4' o.c.	
MS 5		<i>Malva sylvestris</i>	Malva	18-24" H.	3 gal.	4' o.c.	
RH4 2		<i>Rhododendron</i>	Rhododendron	24-30" H.	BBB		large leaf
RH5 10		<i>Rhododendron</i>	Rhododendron	18-24" H.	cont./BBB		large leaf
SP 2		<i>Sparganium angustifolium</i>	Sparganium	21/2-2' H.	cont./BBB		purple flower
TC 22		<i>Thalictrum flavum</i>	Thalictrum	18-24" H.	cont./BBB	4' o.c.	
TO 2		<i>Thymus occidentalis</i>	Thymus	5-6" H.	cont./BBB	4' o.c.	
VC 3		<i>Verbena officinalis</i>	Verbena	24-30" H.	cont./BBB	4' o.c.	
GROUNDCOVERS, VINES & HERBACEOUS PLANTS							
AN 110		<i>Andropogon glomeratus</i>	Andropogon	18-24" H.	4" x 4" pot.	12" o.c.	
AU 129		<i>Azorella</i>	Azorella	10-12" sq.	2" o.c.		
CR 7		<i>Chamaecrista</i>	Chamaecrista	1 gal.	3' o.c.		
CL 4		<i>Chamaecrista</i>	Chamaecrista	3 containers	1 gal.		espaced
EM 22		<i>Eragrostis</i>	Eragrostis	12-15" H.	1 gal.	3' o.c.	
HE 160		<i>Hesperis matronalis</i>	Hesperis	1 gal.	2' o.c.		
HO 23		<i>Hesperis matronalis</i>	Hesperis	1 gal.	30" o.c.		
JE 20		<i>Juncus effusus</i>	Juncus	1 gal.	2' x 1/2'	18" o.c.	
LC 15		<i>Lobelia cardinalis</i>	Lobelia	1 gal.	18" o.c.		red flower
RU 7		<i>Rumex crispus</i>	Rumex	1 gal.	18" o.c.		
SI 20		<i>Sisyrinchium albidum</i>	Sisyrinchium	1 gal.	2' o.c.		
VH 41		<i>Verbena officinalis</i>	Verbena	1 gal.	2' x 1/2'	18" o.c.	
MISCELLANEOUS							
Mulch		Shielded Dark Mulch		3" depth			
Seed Mix A		Limit Grass					
Seed Mix B		Stake-downed Low Maintenance					