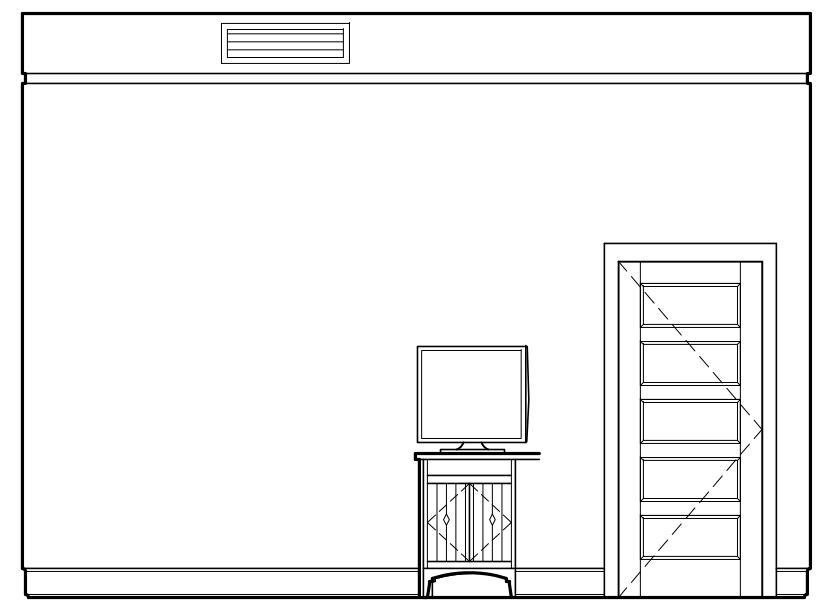
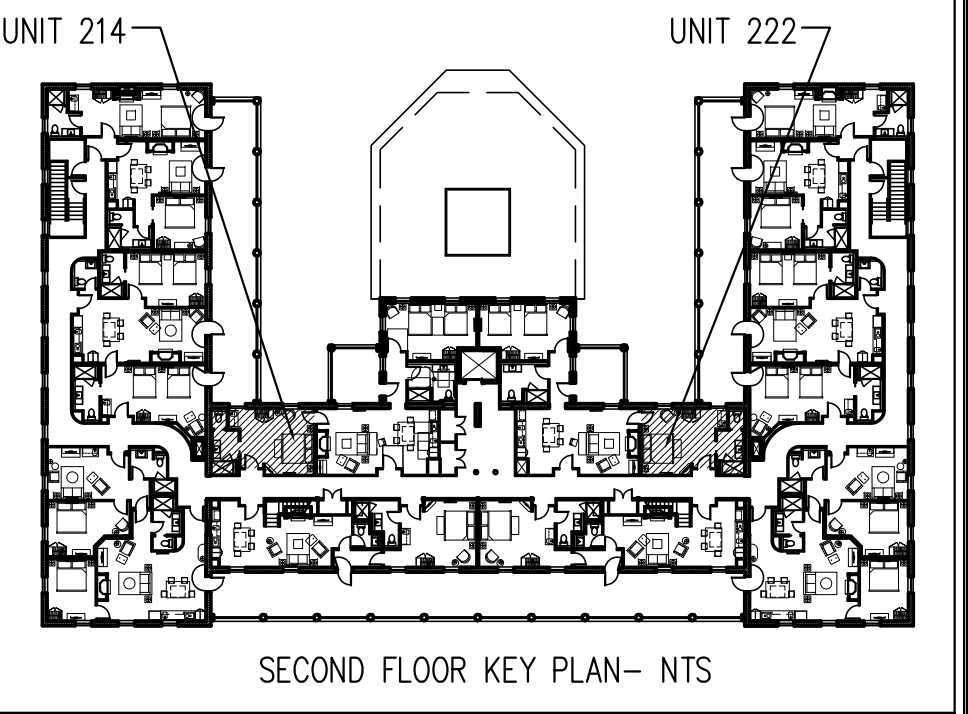


A | ENLARGED FLOOR PLAN UNIT 214 SECOND FLOOR  
1/4"=1'-0"

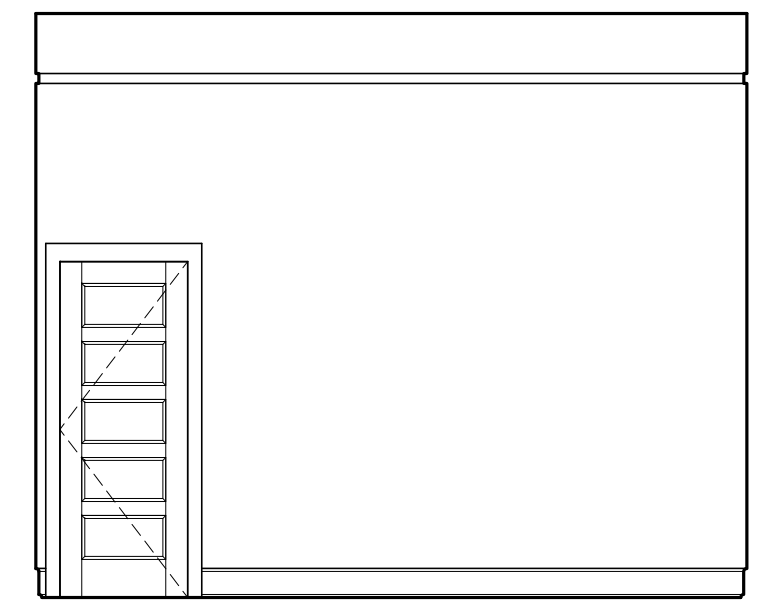
FLOORING LEGEND

	HARDWOOD
	TILE
	CARPETING

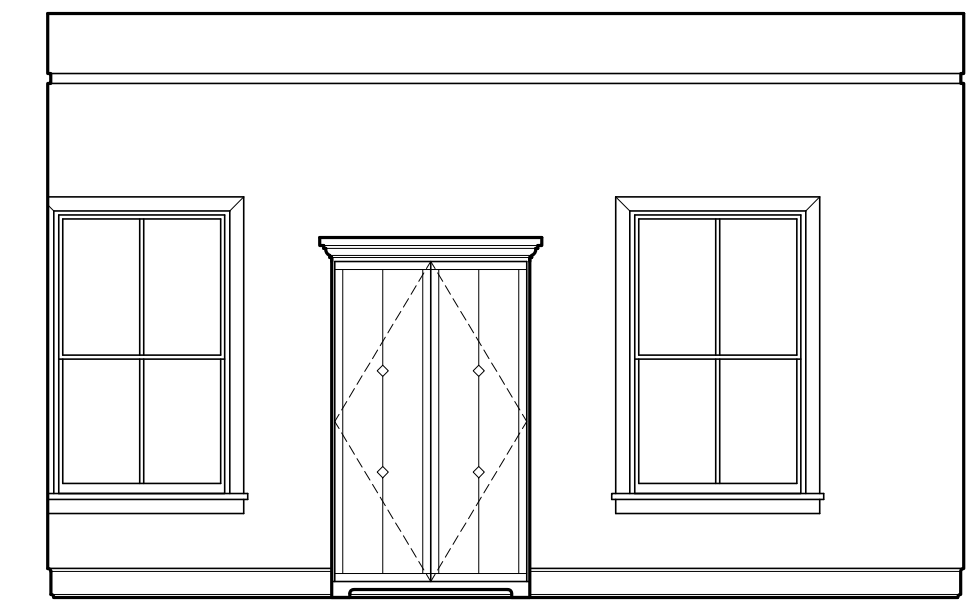
NOTES—  
—UNIT 214 SHOWN— 222 IS MIRRORED  
—REFER TO 7.02, 9.00, 9.00A AND 9.00B FOR MILLWORK DETAILS



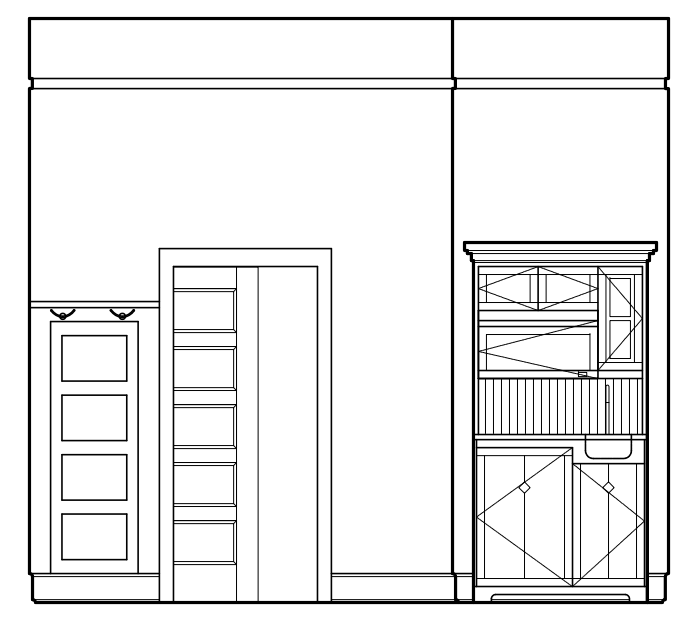
1 | INTERIOR ELEVATION UNIT 214  
1/4"=1'-0"



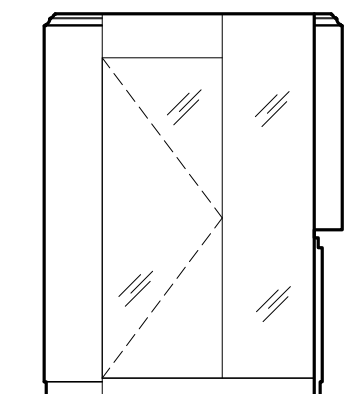
2 | INTERIOR ELEVATION UNIT 214  
1/4"=1'-0"



3 | INTERIOR ELEVATION UNIT 214  
1/4"=1'-0"



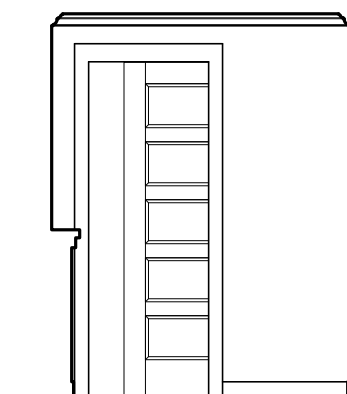
4 | INTERIOR ELEVATION UNIT 214  
1/4"=1'-0"



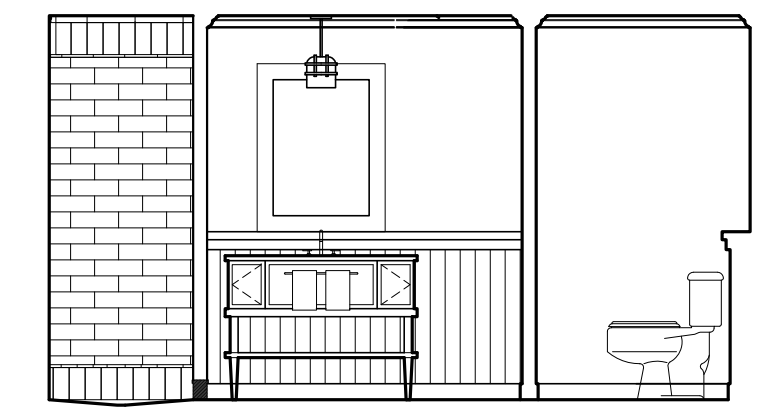
5 | INTERIOR ELEVATION UNIT 214  
1/4"=1'-0"



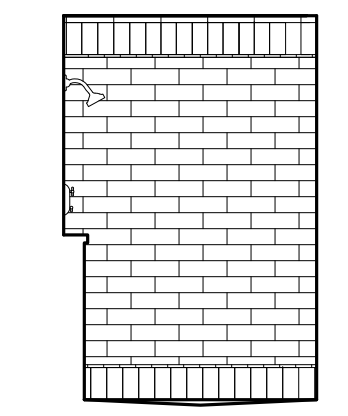
6 | INTERIOR ELEVATION UNIT 214  
1/4"=1'-0"



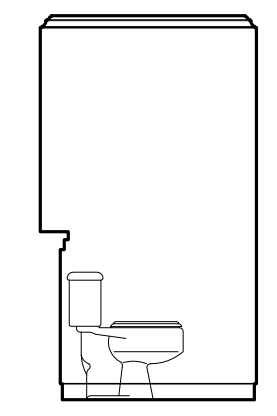
7 | INTERIOR ELEVATION UNIT 214  
1/4"=1'-0"



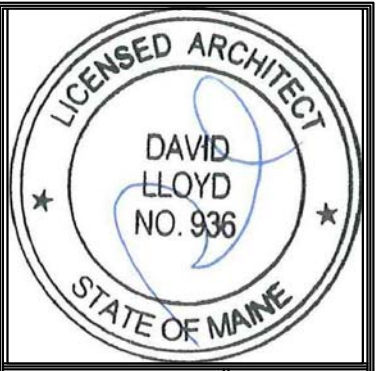
8 | INTERIOR ELEVATION UNIT 214  
1/4"=1'-0"



9 | INTERIOR ELEVATION UNIT 214  
1/4"=1'-0"



10 | INTERIOR ELEVATION UNIT 214  
1/4"=1'-0"



Prepared For:  
**The Inn at Diamond Cove, LLC.**  
PO BOX 3572  
PORTLAND, ME 04101

Interior Designer:  
**truexculins**  
INTERIORS  
208 BATTERY STREET BURLINGTON, VERMONT 05401 USA  
Phone 802.658.2775 800.227.1076  
ARCHITECTURE | INTERIOR DESIGN | truexculins.com

Architect:  
**ARCHETYPE**  
architects  
48 Union Wharf Portland, Maine 04101  
(207) 772-6022 Fax (207) 772-4056

Project:  
**THE INN AT DIAMOND COVE, LLC**  
McKINLEY COURT  
GREAT DIAMOND ISLAND, MAINE

Revisions:

Issued for Construction	03 Feb 14
-------------------------	-----------

Date: 03 Feb 2014  
Scale: As Noted  
**INTERIOR ELEVATIONS UNITS 214, 222**

**A9.22**