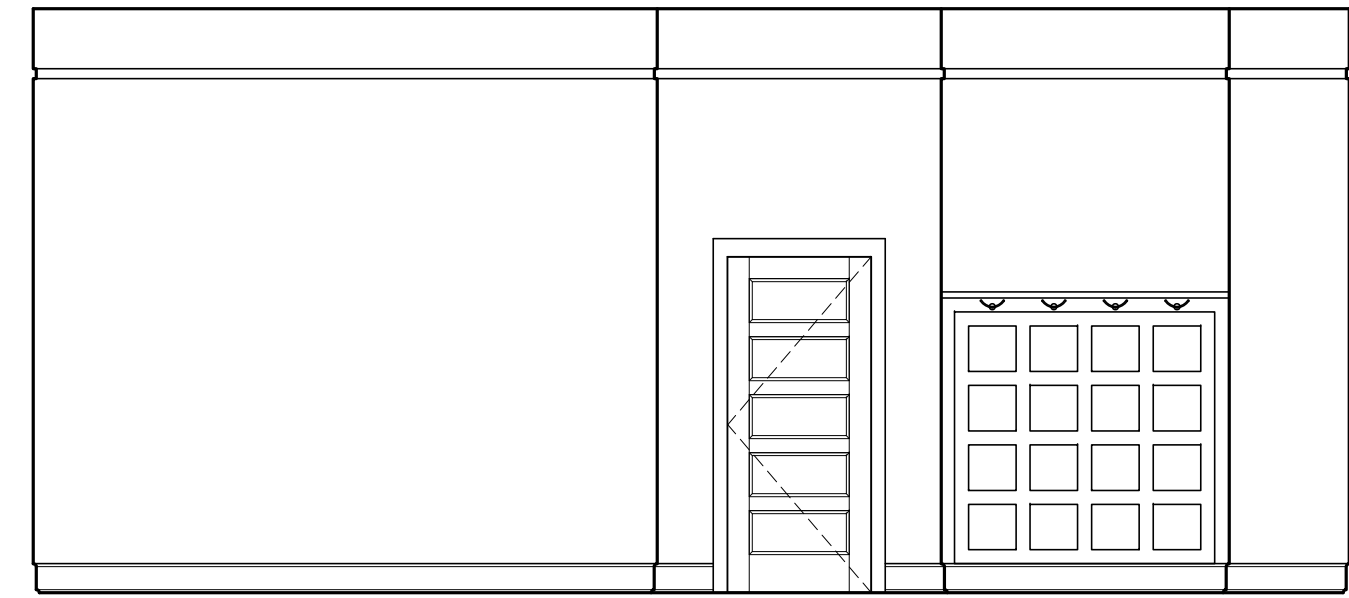
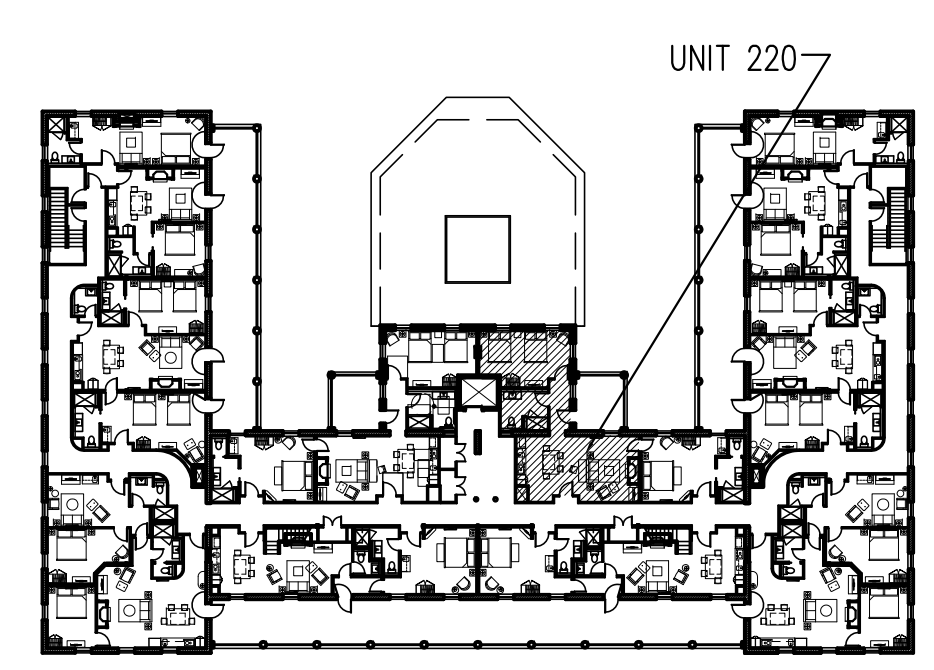


A ENLARGED FLOOR PLAN UNIT 220 SECOND FLOOR
1/4"=1'-0"

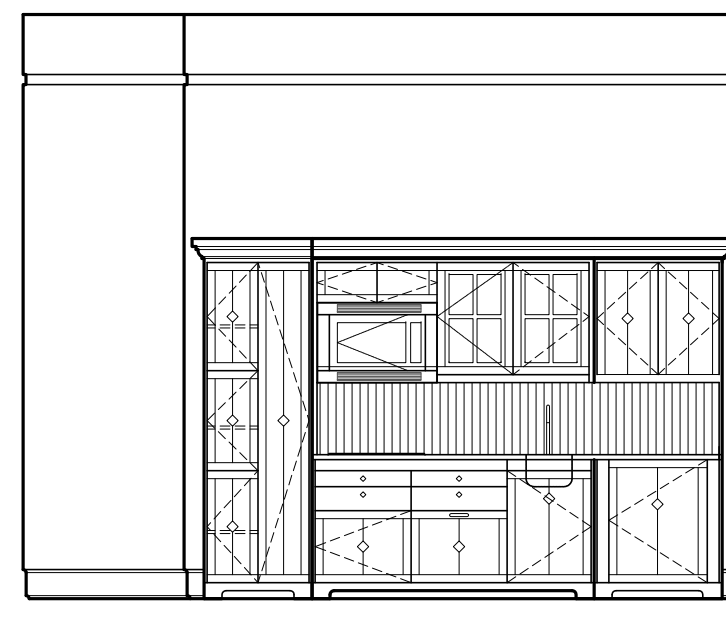
FLOORING LEGEND

	HARDWOOD
	TILE
	CARPETING

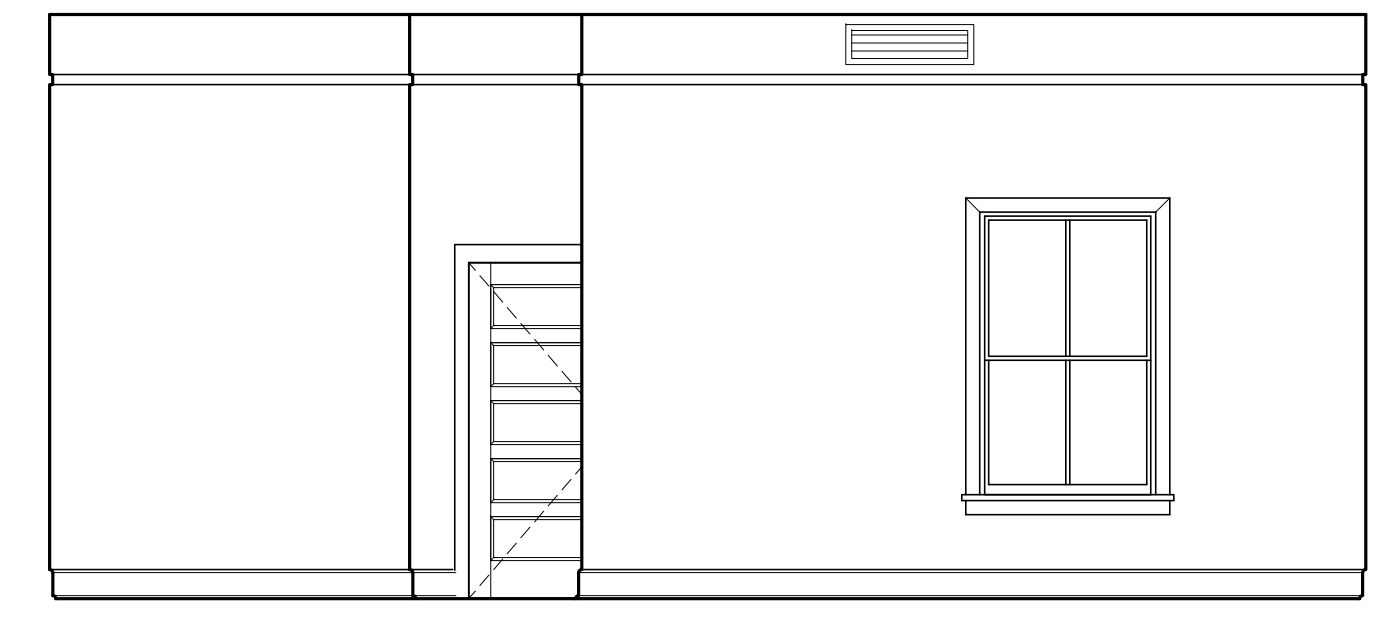
NOTES—
—REFER TO 7.02, 9.00,
9.00A AND 9.00B FOR
MILLWORK DETAILS



1 INTERIOR ELEVATION UNIT 220
1/4"=1'-0"



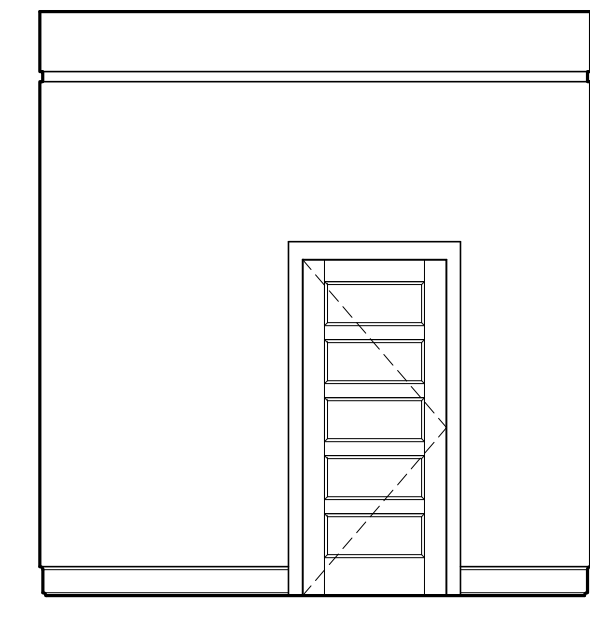
2 INTERIOR ELEVATION UNIT 220
1/4"=1'-0"



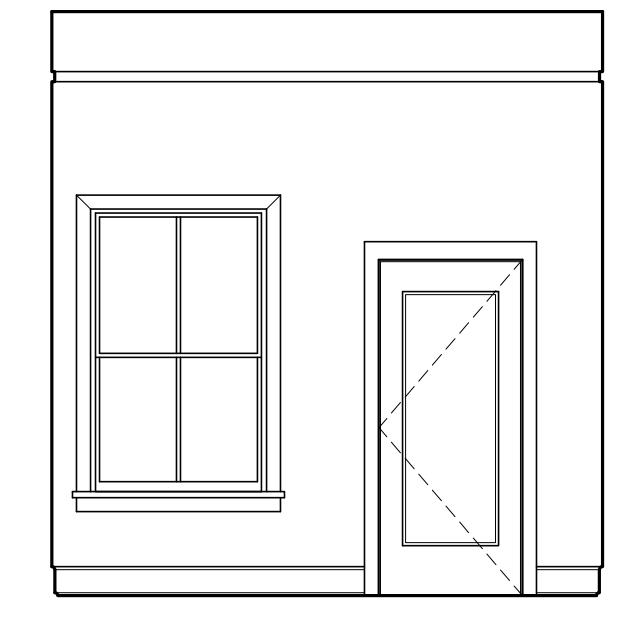
3 INTERIOR ELEVATION UNIT 220
1/4"=1'-0"



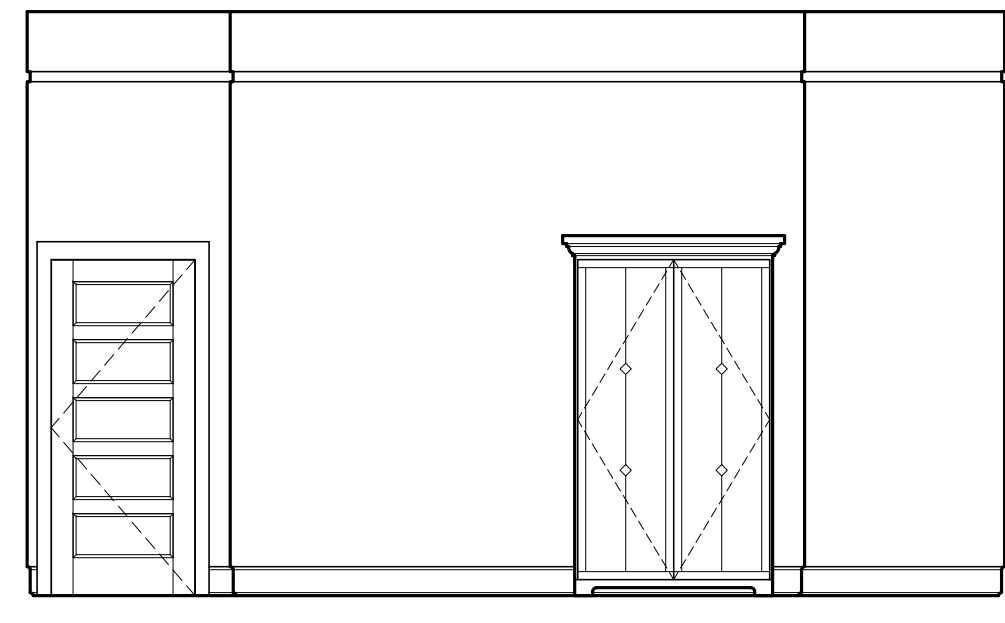
4 INTERIOR ELEVATION UNIT 220
1/4"=1'-0"



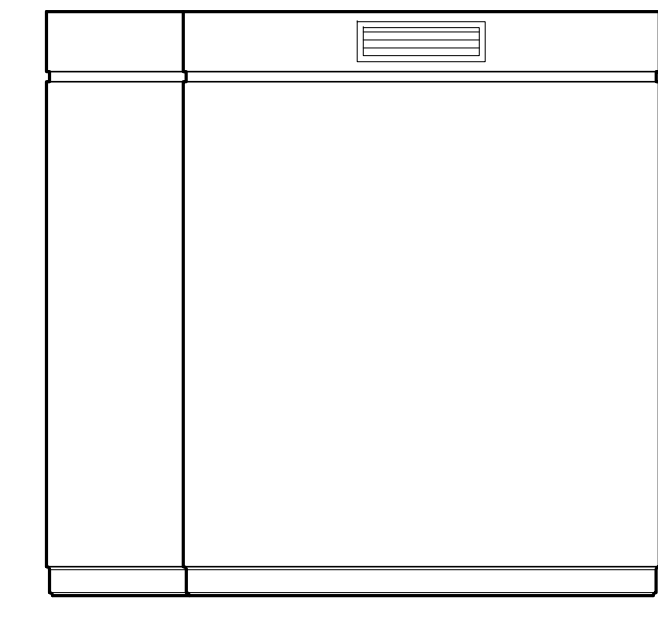
5 INTERIOR ELEVATION UNIT 220
1/4"=1'-0"



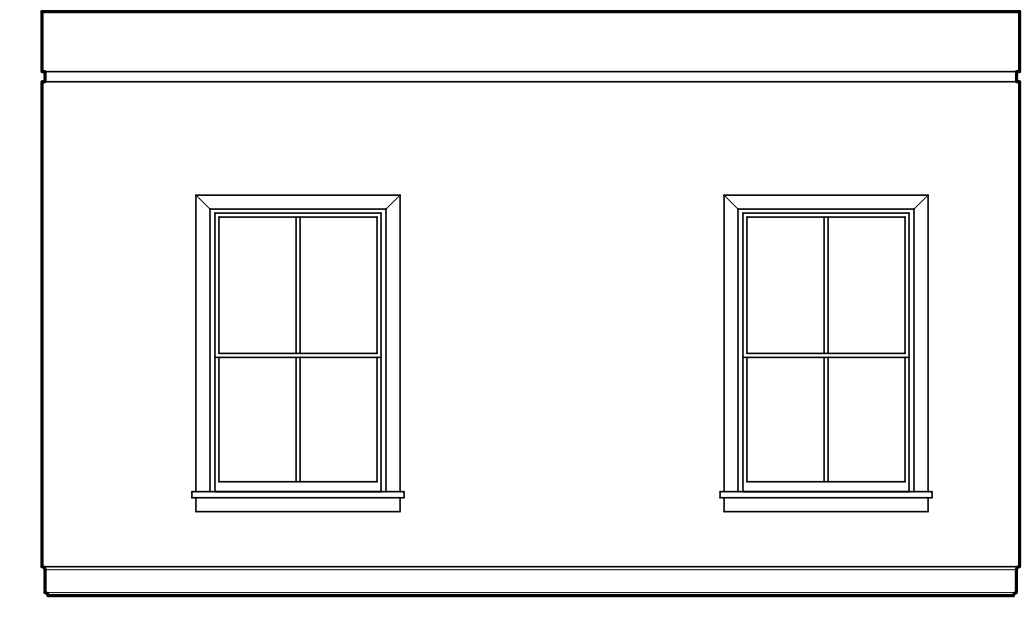
6 INTERIOR ELEVATION UNIT 220
1/4"=1'-0"



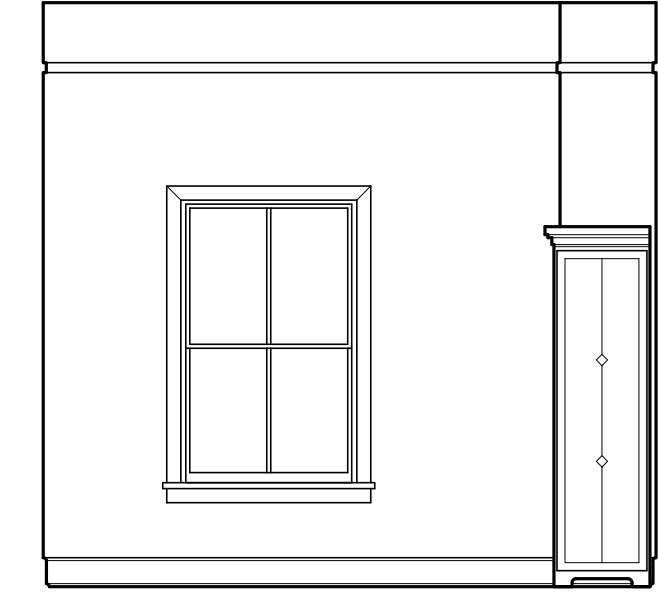
7 INTERIOR ELEVATION UNIT 220
1/4"=1'-0"



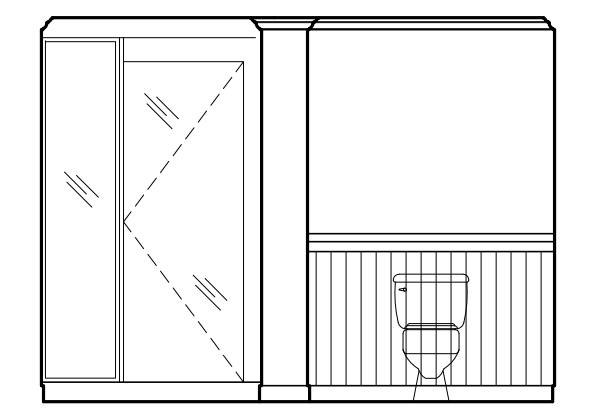
8 INTERIOR ELEVATION UNIT 220
1/4"=1'-0"



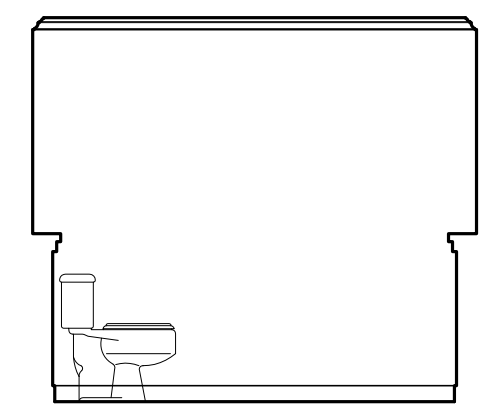
9 INTERIOR ELEVATION UNIT 220
1/4"=1'-0"



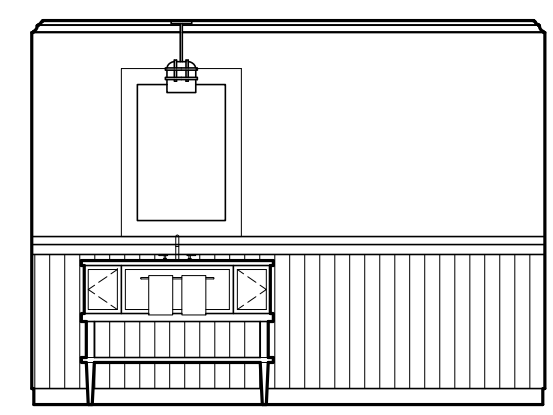
10 INTERIOR ELEVATION UNIT 220
1/4"=1'-0"



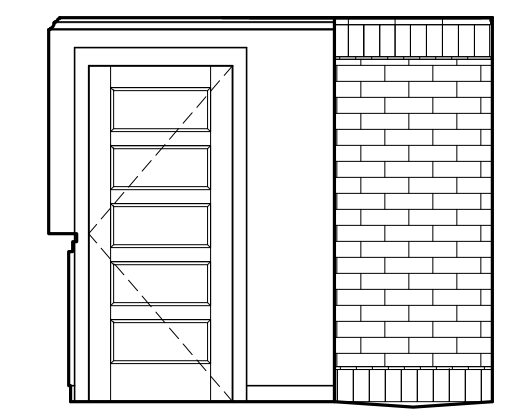
11 INTERIOR ELEVATION UNIT 220
1/4"=1'-0"



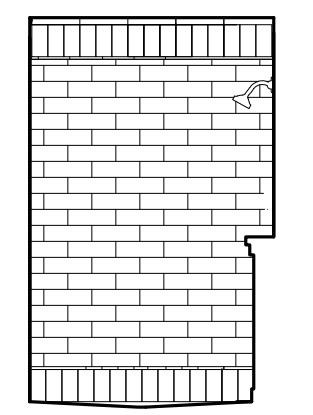
12 INTERIOR ELEVATION UNIT 220
1/4"=1'-0"



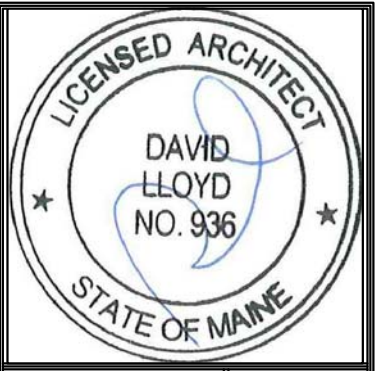
13 INTERIOR ELEVATION UNIT 220
1/4"=1'-0"



14 INTERIOR ELEVATION UNIT 220
1/4"=1'-0"



15 INTERIOR ELEVATION UNIT 220
1/4"=1'-0"



Prepared For:
**The Inn at Diamond
Cove, LLC.**
PO BOX 3572
PORTLAND, ME 04101

Interior Designer:
truexculins
INTERIORS
208 BATTERY STREET BURLINGTON, VERMONT 05401 USA
Phone 802.656.2775 800.227.1076
ARCHITECTURE | INTERIOR DESIGN | truexculins.com

Architect:
ARCHETYPE
architects
48 Union Wharf Portland, Maine 04101
(207) 772-6022 Fax (207) 772-4056

Project:
**THE INN AT
DIAMOND COVE,
LLC**
McKINLEY COURT
GREAT DIAMOND ISLAND, MAINE

Revisions:
Issued for Construction 03 Feb 14

Date:
03 Feb 2014
Scale:
As Noted
**INTERIOR
ELEVATIONS UNIT
220**

A9.21A