

Prepared For:
The Inn at Diamond Cove, LLC.
 PO BOX 3572
 PORTLAND, ME 04101

Interior Designer:
truexculins
 INTERIORS
 209 BATTERY STREET BURLINGTON, VERMONT 05401 USA
 Phone 802.656.2775 800.227.1076
 ARCHITECTURE | INTERIOR DESIGN | truexculins.com

Architect:
ARCHETYPE
 architects
 48 Union Wharf Portland, Maine 04101
 (207) 772-6022 Fax (207) 772-4056

Project:
**THE INN AT
 DIAMOND COVE,
 LLC**
 MCKINLEY COURT
 GREAT DIAMOND ISLAND, MAINE

Revisions:
 Issued for Construction 03 Feb 14

Date: 03 Feb 2014
 Scale: As Noted
**INTERIOR
 ELEVATIONS UNIT
 216**

A9.21

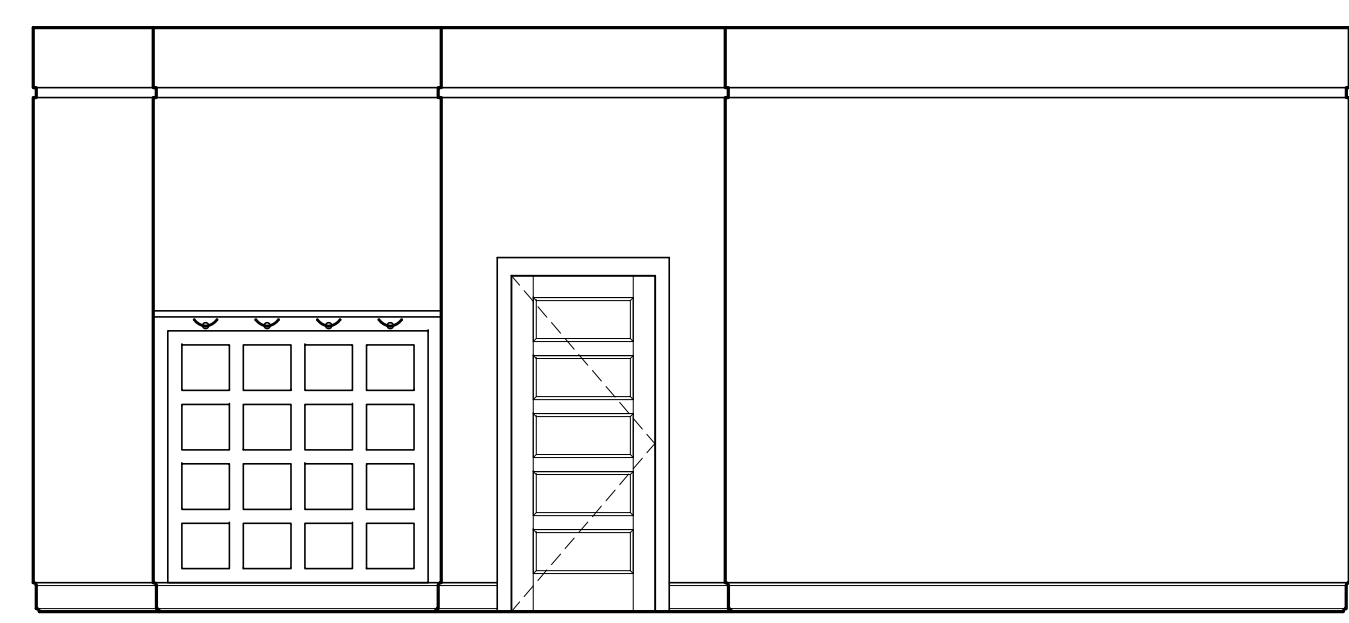
FLOORING LEGEND

- HARDWOOD
- TILE
- CARPETING

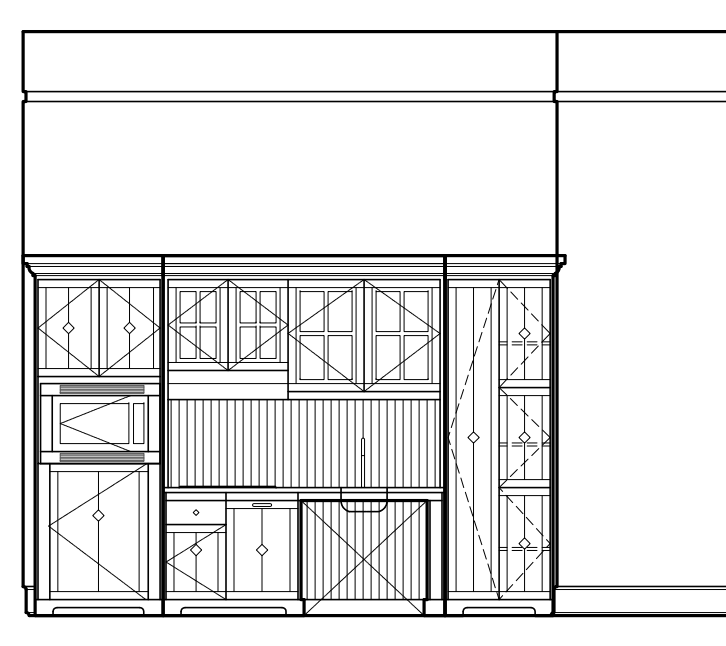
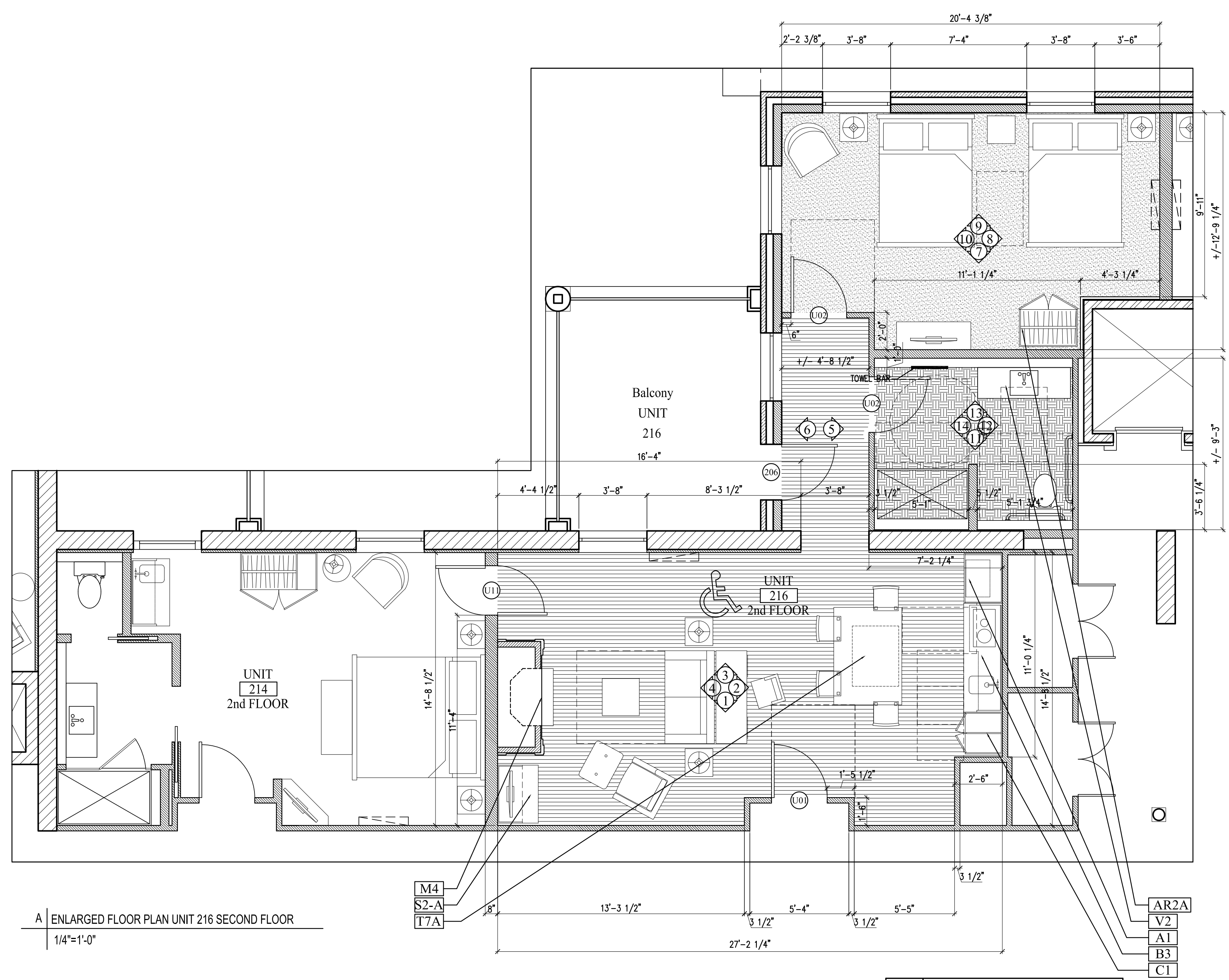
NOTES—
 —REFER TO 7.02, 9.00,
 9.00A AND 9.00B FOR
 MILLWORK DETAILS

UNIT 216

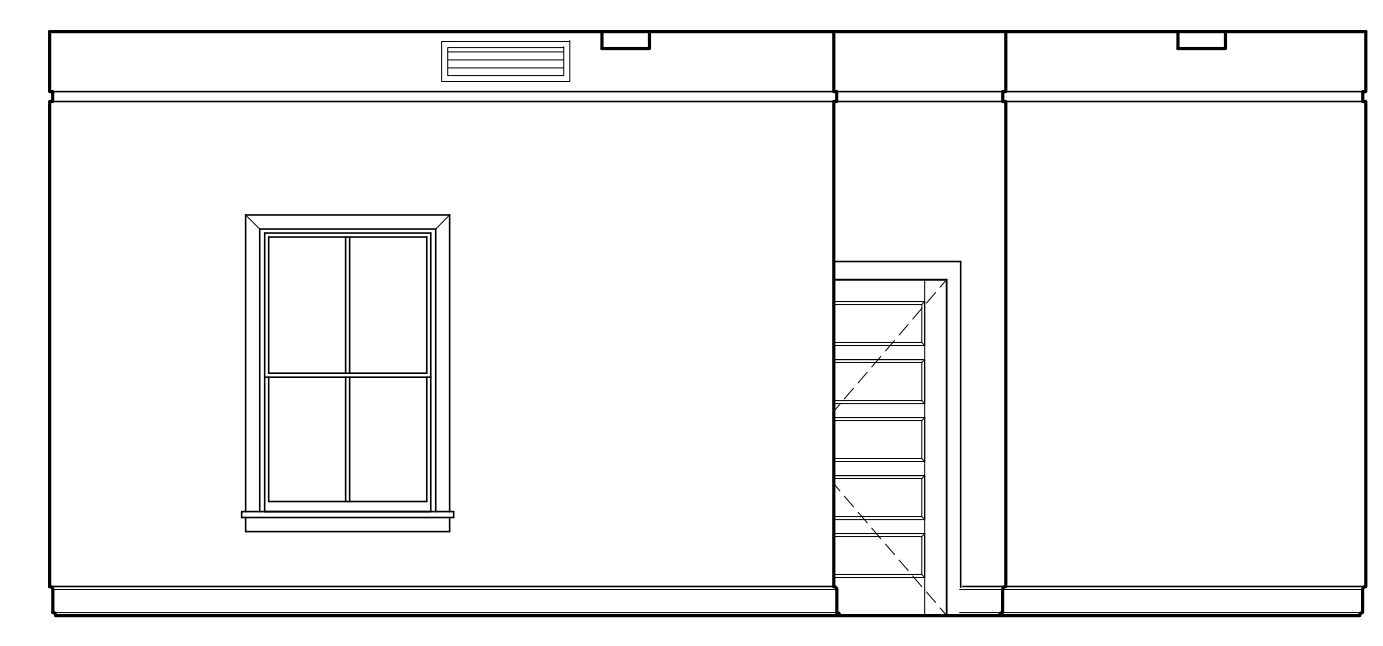
SECOND FLOOR KEY PLAN- NTS



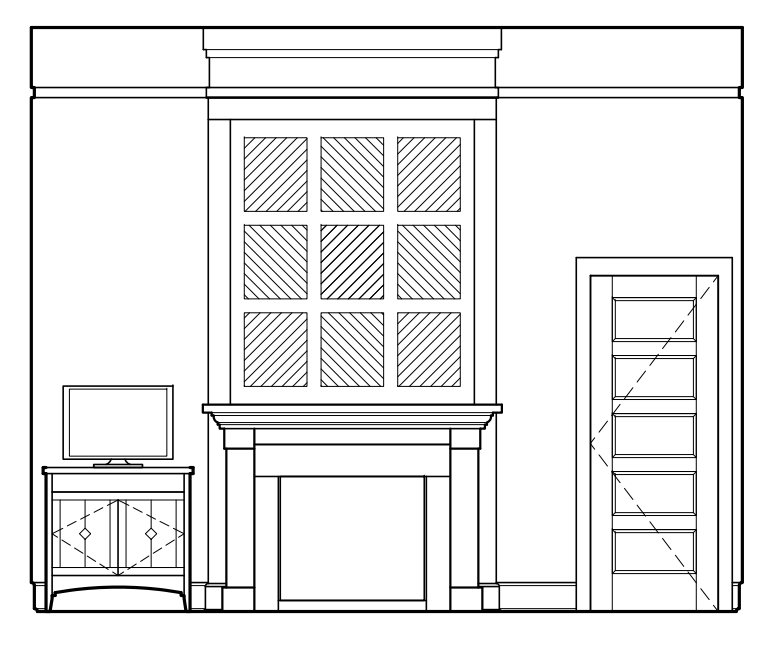
1 | INTERIOR ELEVATION UNIT 216
 1/4"=1'-0"



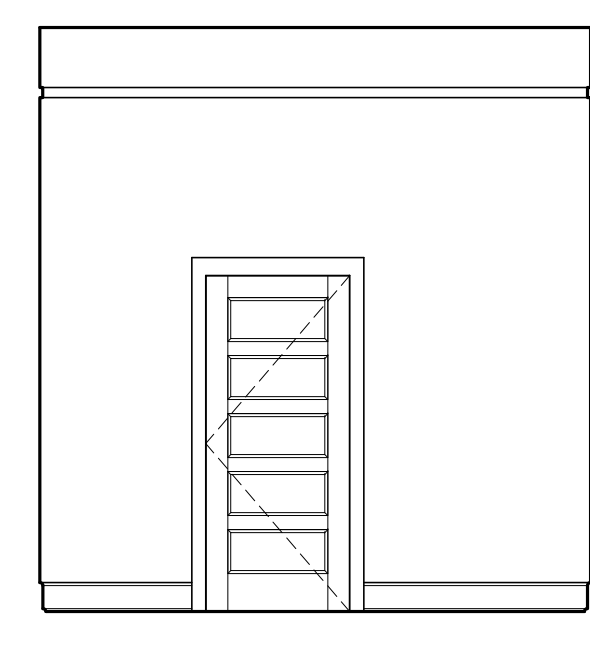
2 | INTERIOR ELEVATION UNIT 216
 1/4"=1'-0"



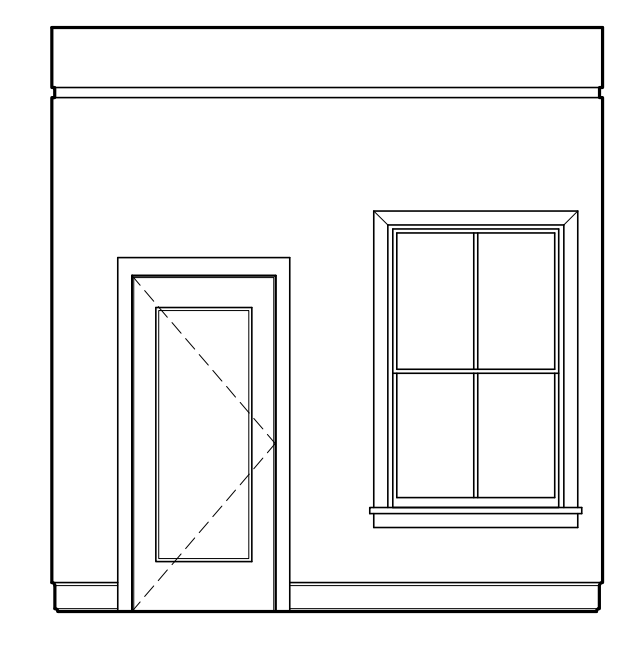
3 | INTERIOR ELEVATION UNIT 216
 1/4"=1'-0"



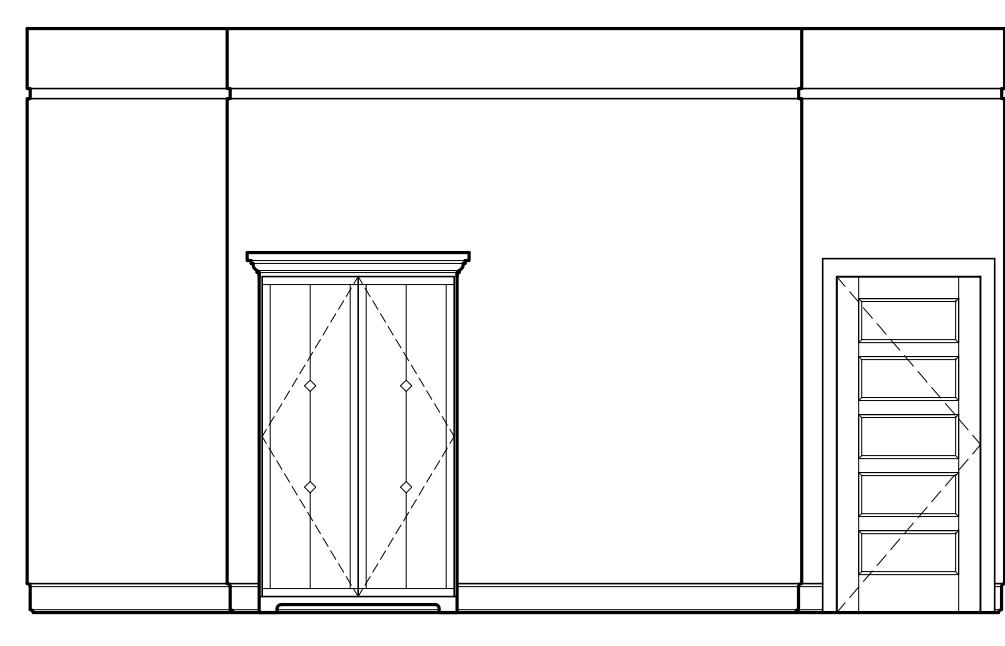
4 | INTERIOR ELEVATION UNIT 216
 1/4"=1'-0"



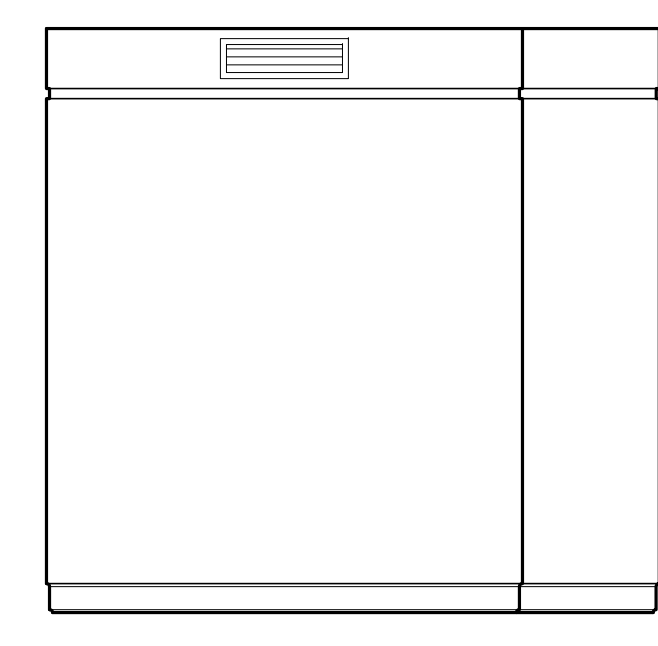
5 | INTERIOR ELEVATION UNIT 216
 1/4"=1'-0"



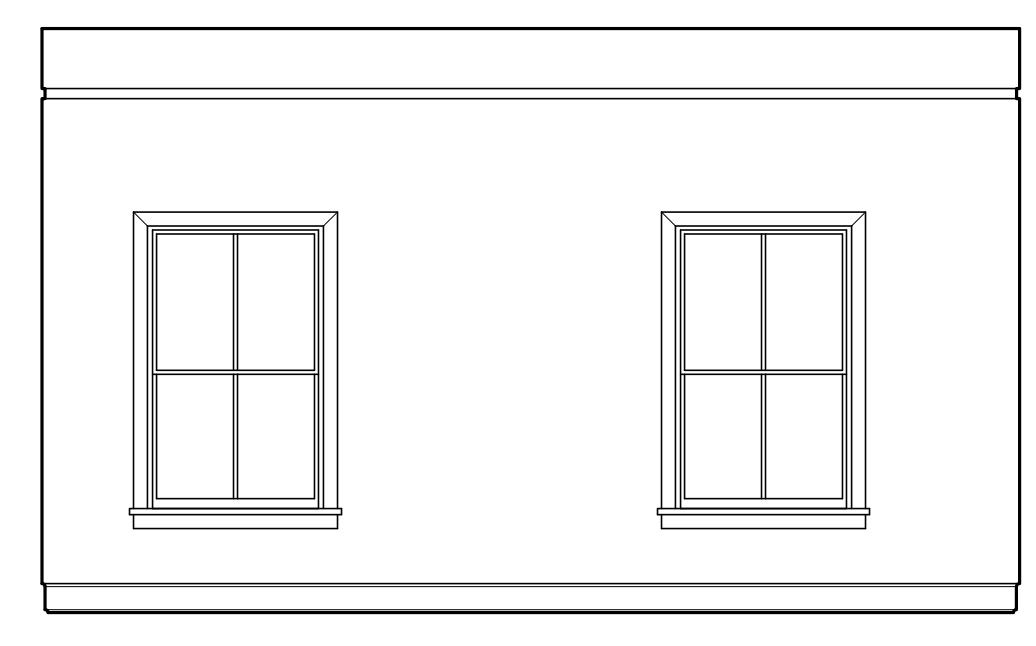
6 | INTERIOR ELEVATION UNIT 216
 1/4"=1'-0"



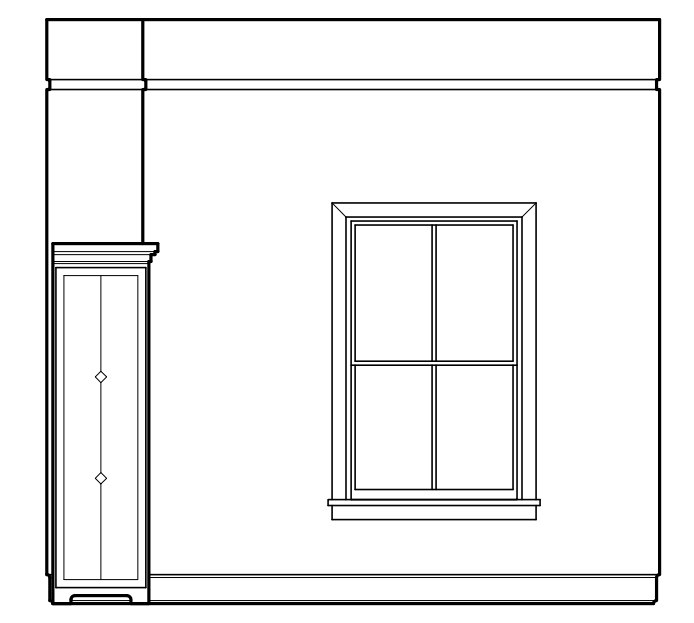
7 | INTERIOR ELEVATION UNIT 216
 1/4"=1'-0"



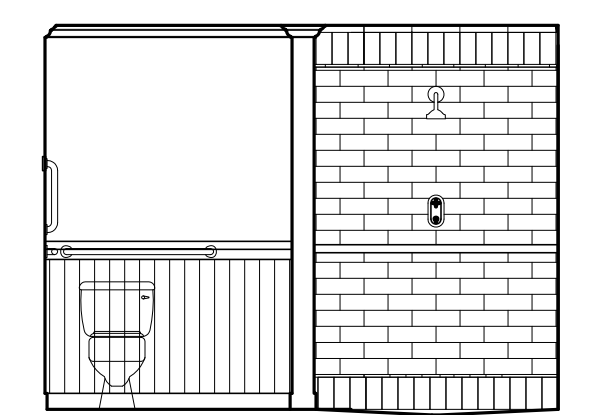
8 | INTERIOR ELEVATION UNIT 216
 1/4"=1'-0"



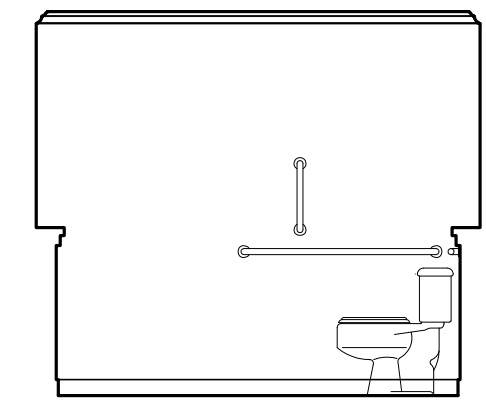
9 | INTERIOR ELEVATION UNIT 216
 1/4"=1'-0"



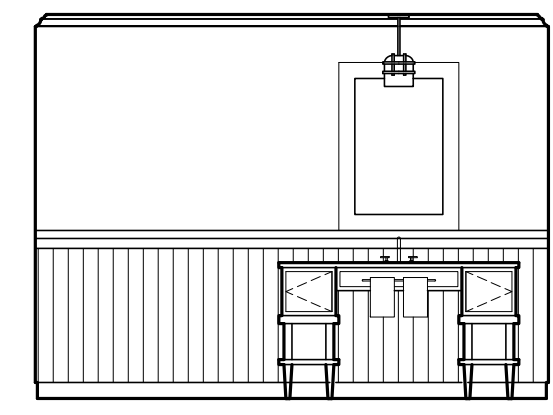
10 | INTERIOR ELEVATION UNIT 216
 1/4"=1'-0"



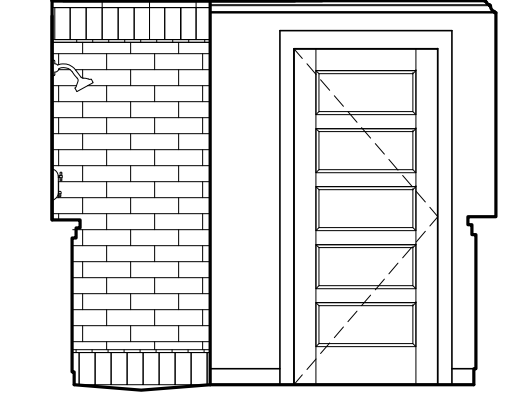
11 | INTERIOR ELEVATION UNIT 216
 1/4"=1'-0"



12 | INTERIOR ELEVATION UNIT 216
 1/4"=1'-0"



13 | INTERIOR ELEVATION UNIT 216
 1/4"=1'-0"



14 | INTERIOR ELEVATION UNIT 216
 1/4"=1'-0"