


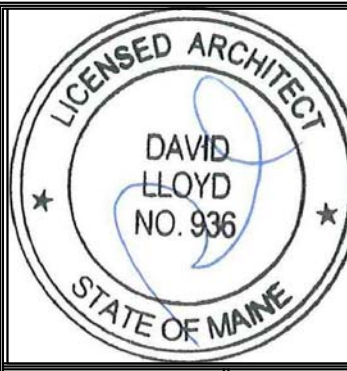
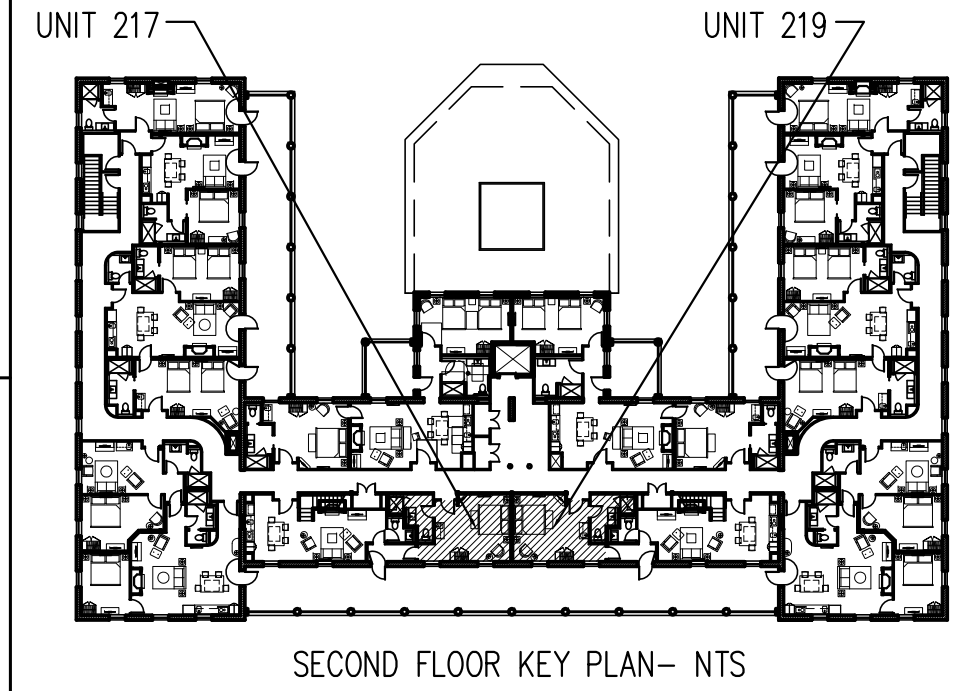


A ENLARGED FLOOR PLAN UNIT 217 SECOND FLOOR
1/4"=1'-0"

FLOORING LEGEND
 HARDWOOD
 TILE
 CARPETING

NOTES-
 -UNIT 217 SHOWN- 219 IS MIRRORED
 -REFER TO 7.02, 9.00, 9.00A AND 9.00B FOR MILLWORK DETAILS



Prepared For:
The Inn at Diamond Cove, LLC.
 PO BOX 3572
 PORTLAND, ME 04101

Interior Designer:
truexculins
 INTERIORS
 289 BATTERY STREET BURLINGTON, VERMONT 05401 USA
 Phone 802.658.2775 800.227.1076
 ARCHITECTURE | INTERIOR DESIGN | truexculins.com

Architect:
ARCHETYPE
 architects
 48 Union Wharf Portland, Maine 04101
 (207) 772-6022 Fax (207) 772-4056

Project:
THE INN AT DIAMOND COVE, LLC
 MCKINLEY COURT
 GREAT DIAMOND ISLAND, MAINE

Revisions:
 Issued for Construction 03 Feb 14

Date: 03 Feb 2014
 Scale: As Noted
INTERIOR ELEVATIONS UNIT 217, 219

