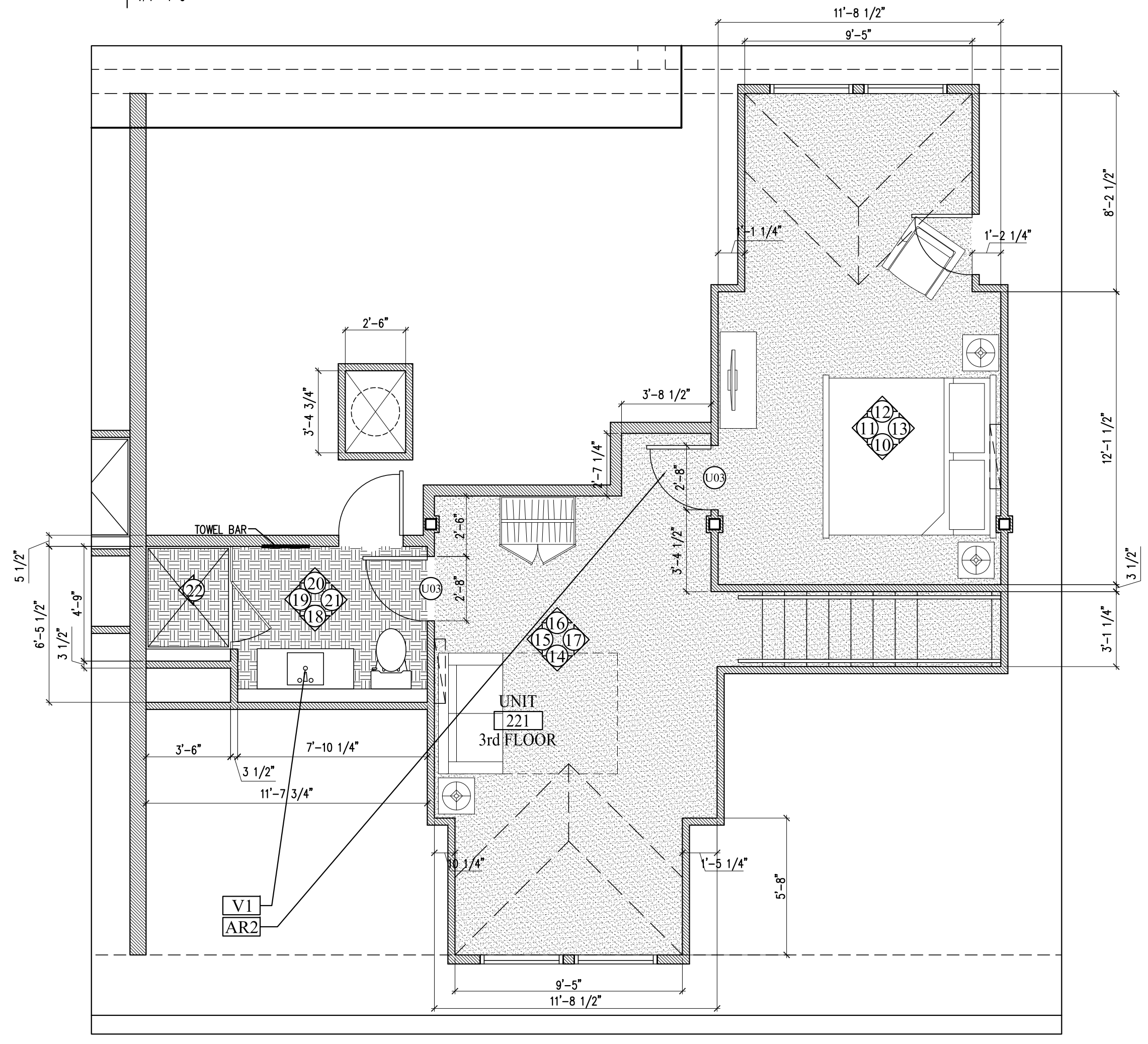


A ENLARGED FLOOR PLAN UNIT 221 SECOND FLOOR
1/4"=1'-0"

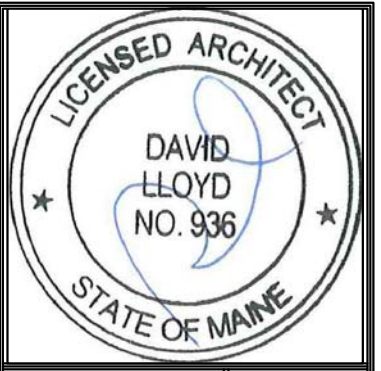
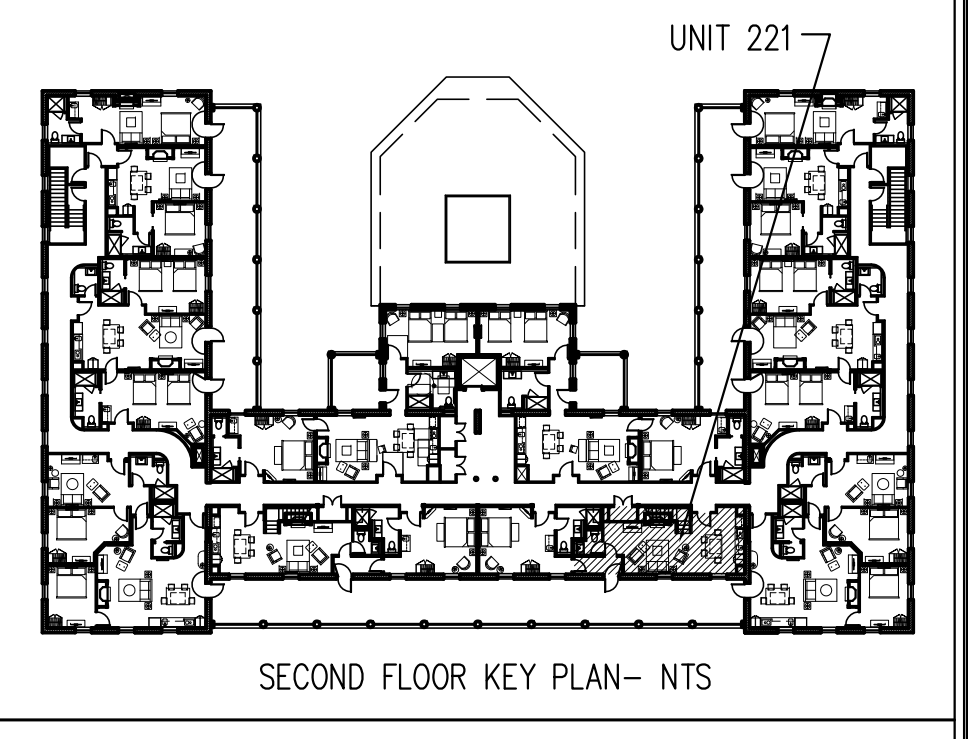


B ENLARGED FLOOR PLAN UNIT 221 THIRD FLOOR
1/4"=1'-0"

FLOORING LEGEND

- HARDWOOD
- TILE
- CARPETING

NOTES--
--REFER TO 7.02, 9.00,
9.00A AND 9.00B FOR
MILLWORK DETAILS



Prepared For:
**The Inn at Diamond
Cove, LLC.**
PO BOX 3572
PORTLAND, ME 04101

Interior Designer:
truexculins
INTERIORS
208 BATTERY STREET BURLINGTON, VERMONT 05401 USA
Phone 802.658.2775 800.227.1076
ARCHITECTURE | INTERIOR DESIGN | truexculins.com

Architect:
ARCHETYPE
architects
48 Union Wharf Portland, Maine 04101
(207) 772-6022 Fax (207) 772-4056

Project:
**THE INN AT
DIAMOND COVE,
LLC**
McKINLEY COURT
GREAT DIAMOND ISLAND, MAINE

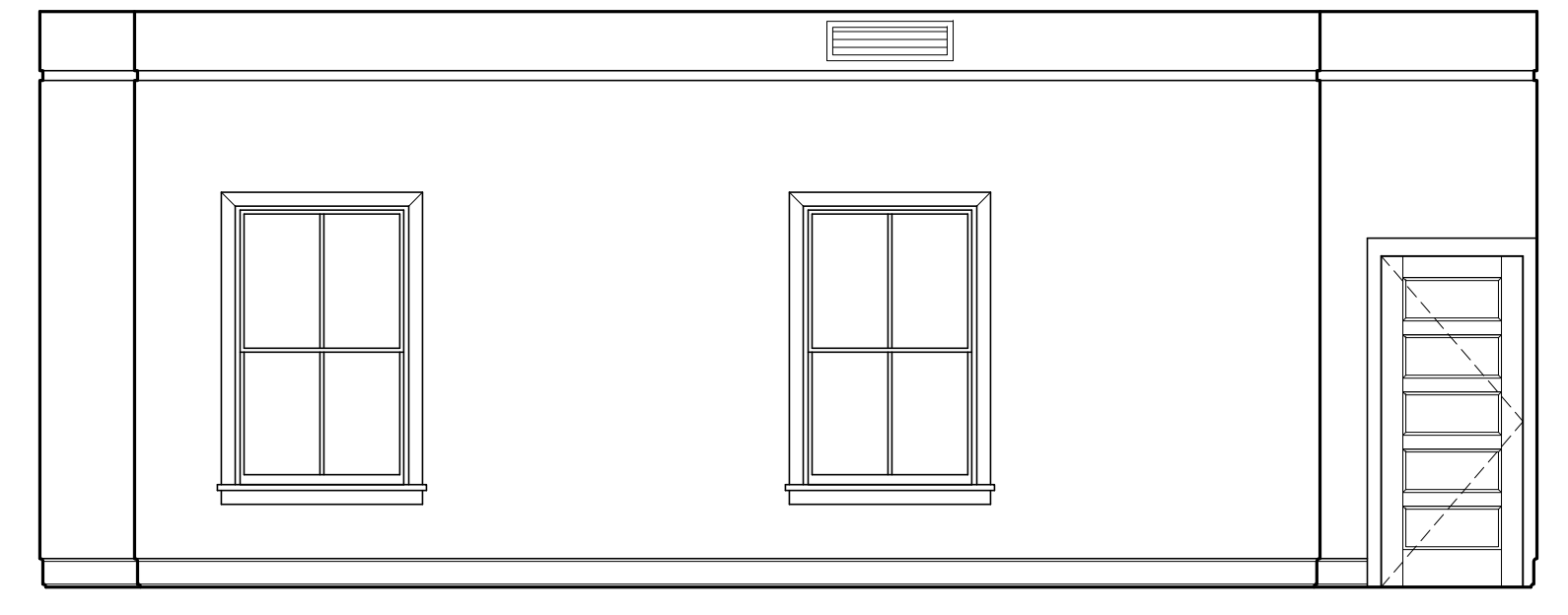
Revisions:
Issued for Construction 03 Feb 14

Date:
03 Feb 2014
Scale:
As Noted
**INTERIOR
ELEVATIONS UNITS
221**

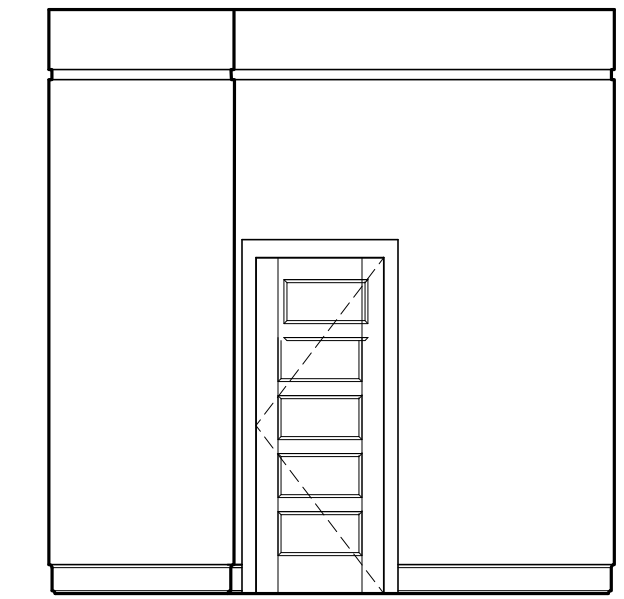
A9.19A



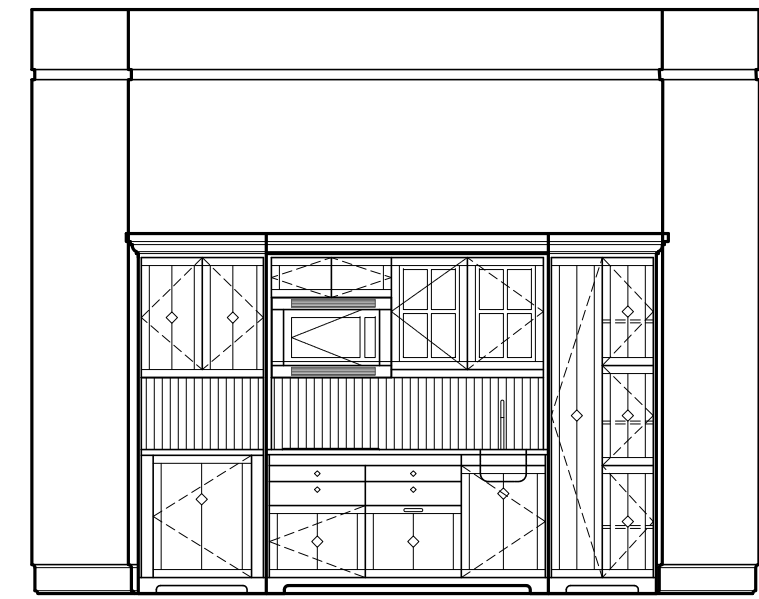
3 INTERIOR ELEVATION UNIT 221
1/4"=1'-0"



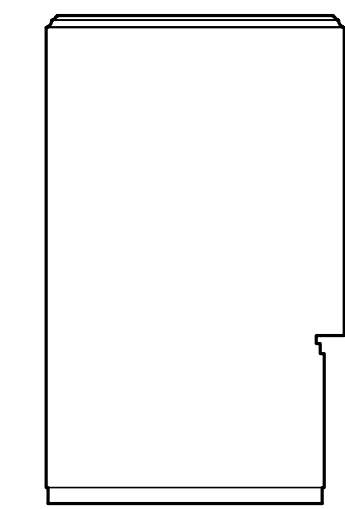
1 INTERIOR ELEVATION UNIT 221
1/4"=1'-0"



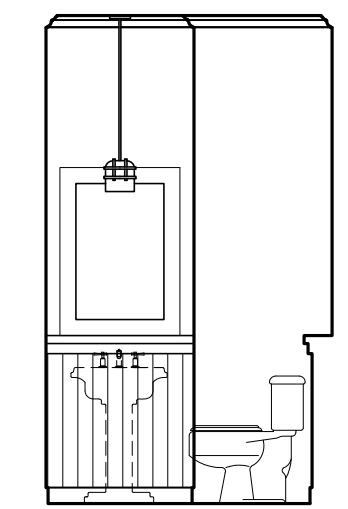
2 INTERIOR ELEVATION UNIT 221
1/4"=1'-0"



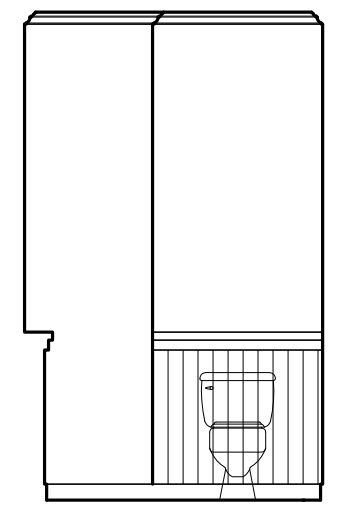
4 INTERIOR ELEVATION UNIT 221
1/4"=1'-0"



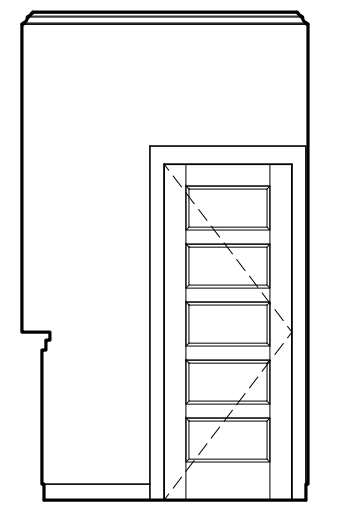
6 INT. ELEV. UNIT 221
1/4"=1'-0"



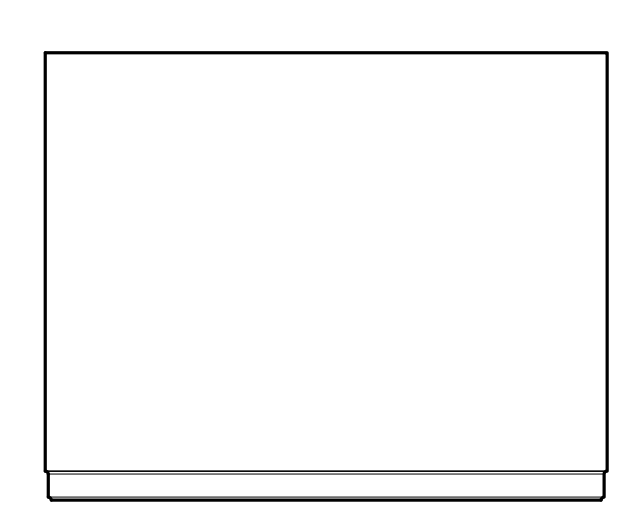
7 INT. ELEV. UNIT 221
1/4"=1'-0"



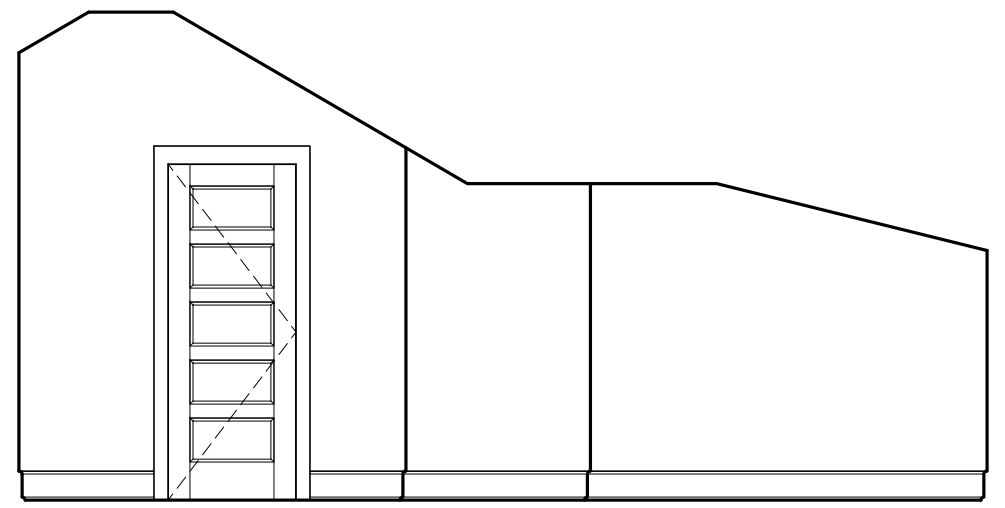
8 INT. ELEV. UNIT 221
1/4"=1'-0"



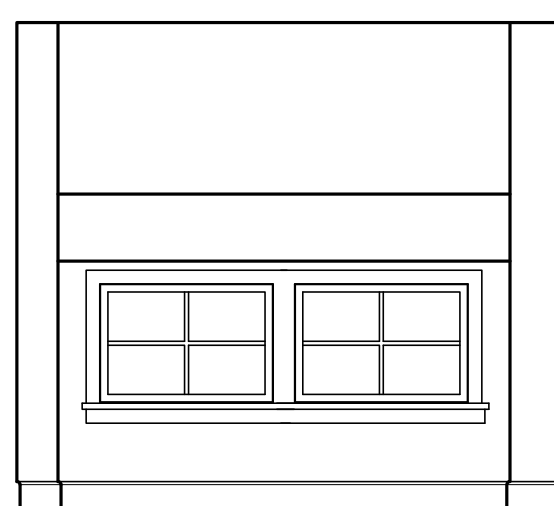
9 INT. ELEV. UNIT 221
1/4"=1'-0"



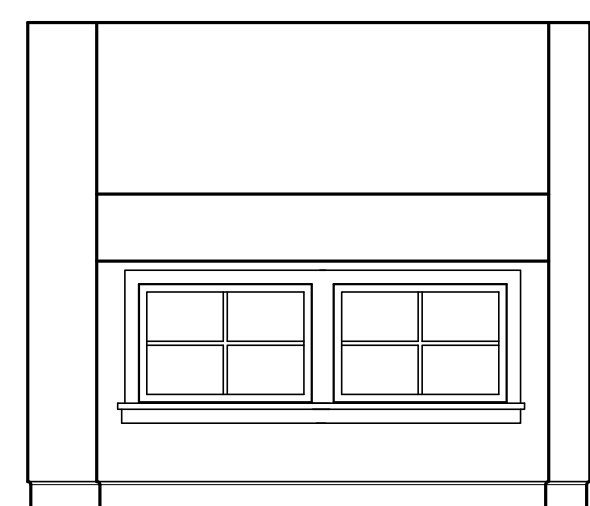
10 INT. ELEV. UNIT 221
1/4"=1'-0"



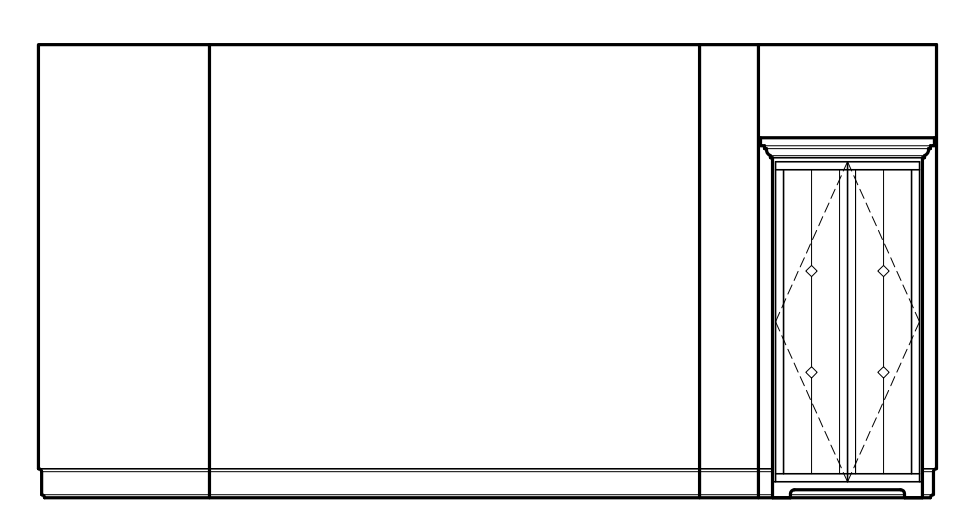
11 INTERIOR ELEVATION UNIT 221
1/4"=1'-0"



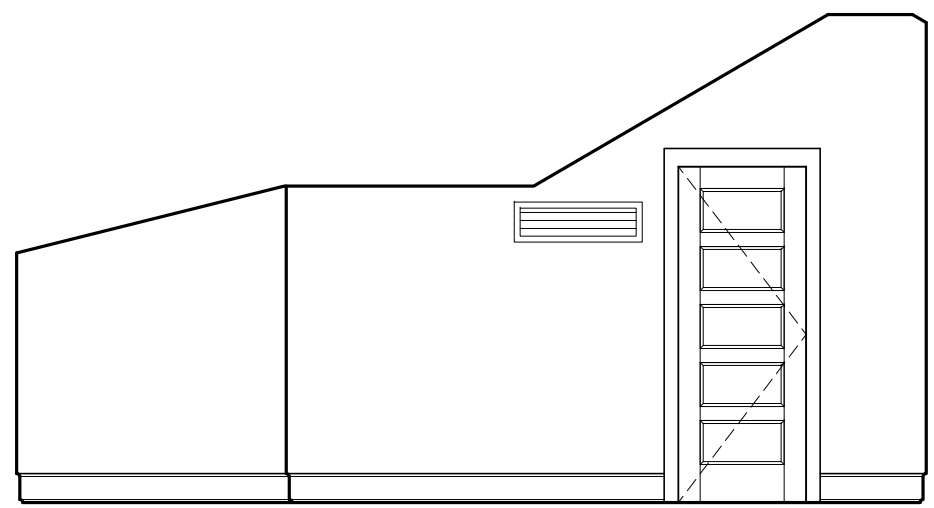
12 INT. ELEV. UNIT 221
1/4"=1'-0"



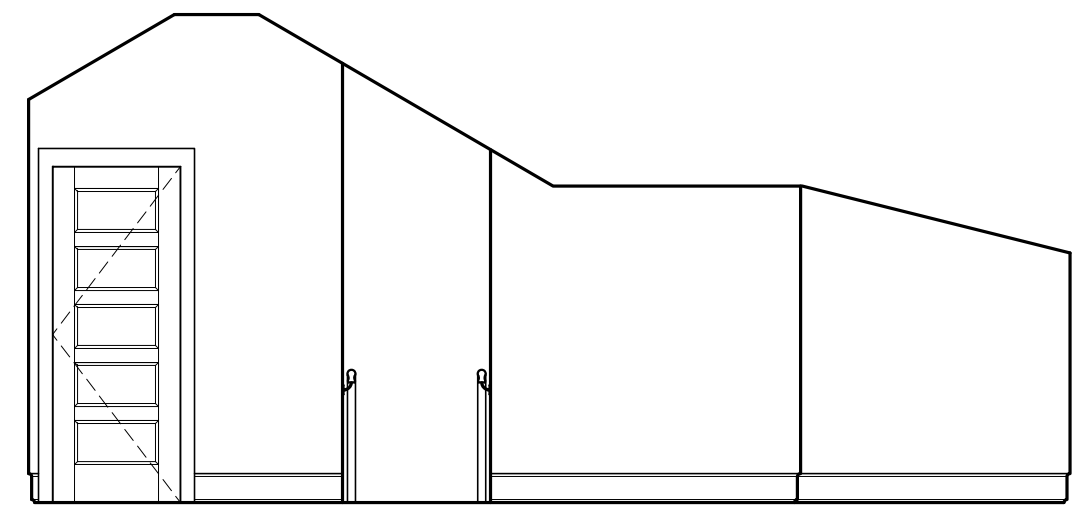
14 INT. ELEV. UNIT 221
1/4"=1'-0"



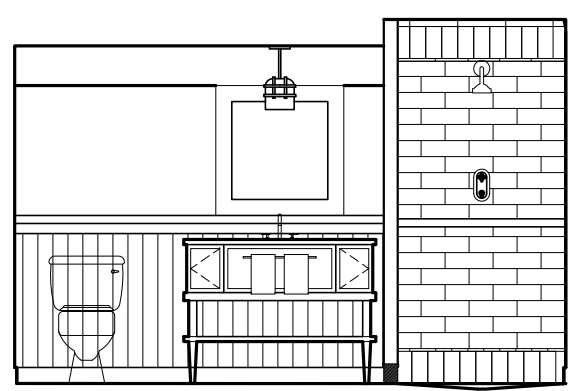
16 INTERIOR ELEVATION UNIT 221
1/4"=1'-0"



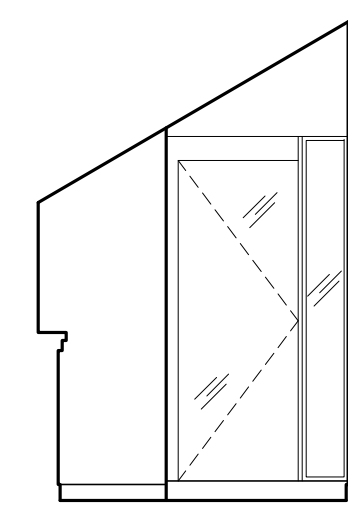
15 INTERIOR ELEVATION UNIT 221
1/4"=1'-0"



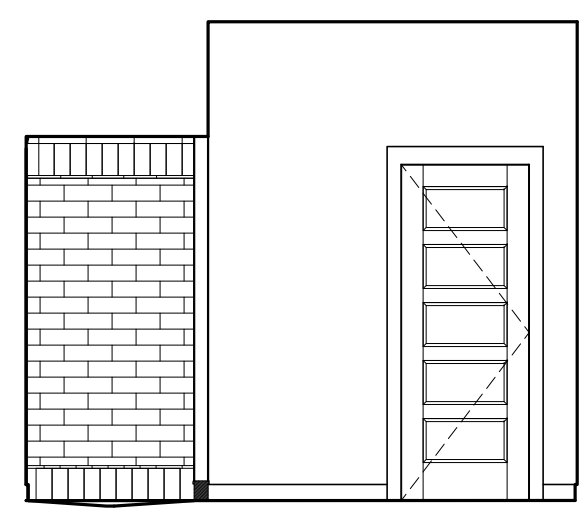
17 INTERIOR ELEVATION UNIT 221
1/4"=1'-0"



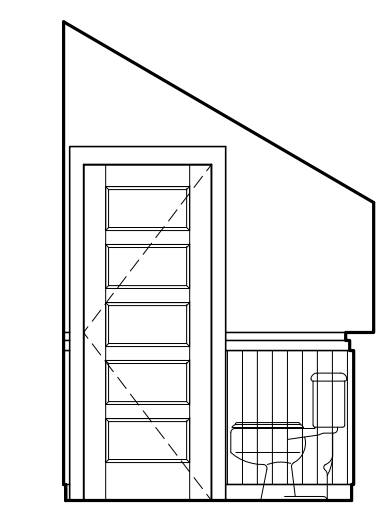
18 INT. ELEV. UNIT 221
1/4"=1'-0"



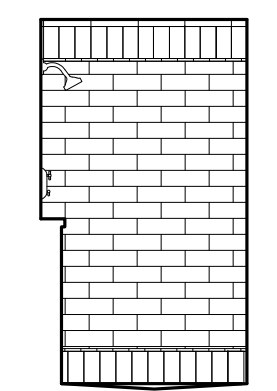
19 INT. ELEV. UNIT 221
1/4"=1'-0"



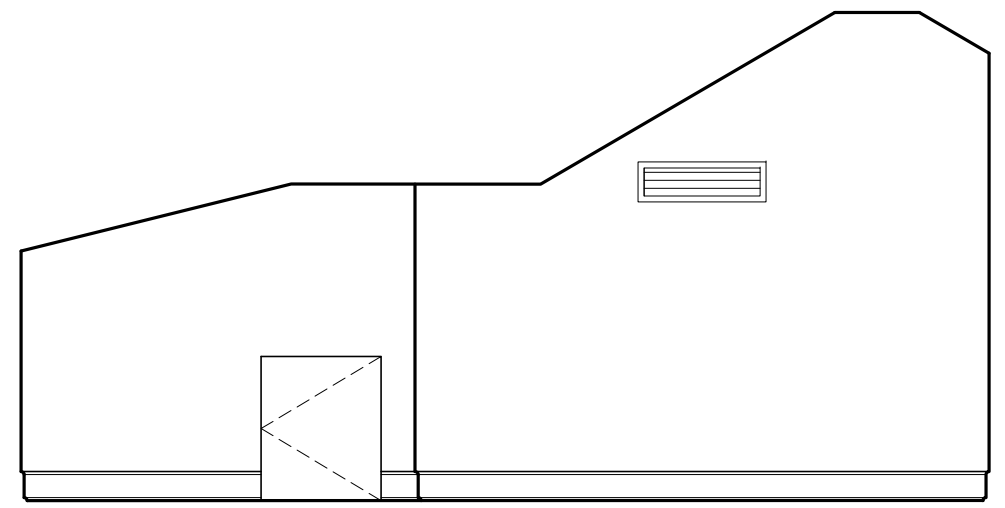
20 INT. ELEV. UNIT 221
1/4"=1'-0"



21 INT. ELEV. UNIT 221
1/4"=1'-0"



22 INT. ELEV. UNIT 221
1/4"=1'-0"



13 INTERIOR ELEVATION UNIT 221
1/4"=1'-0"