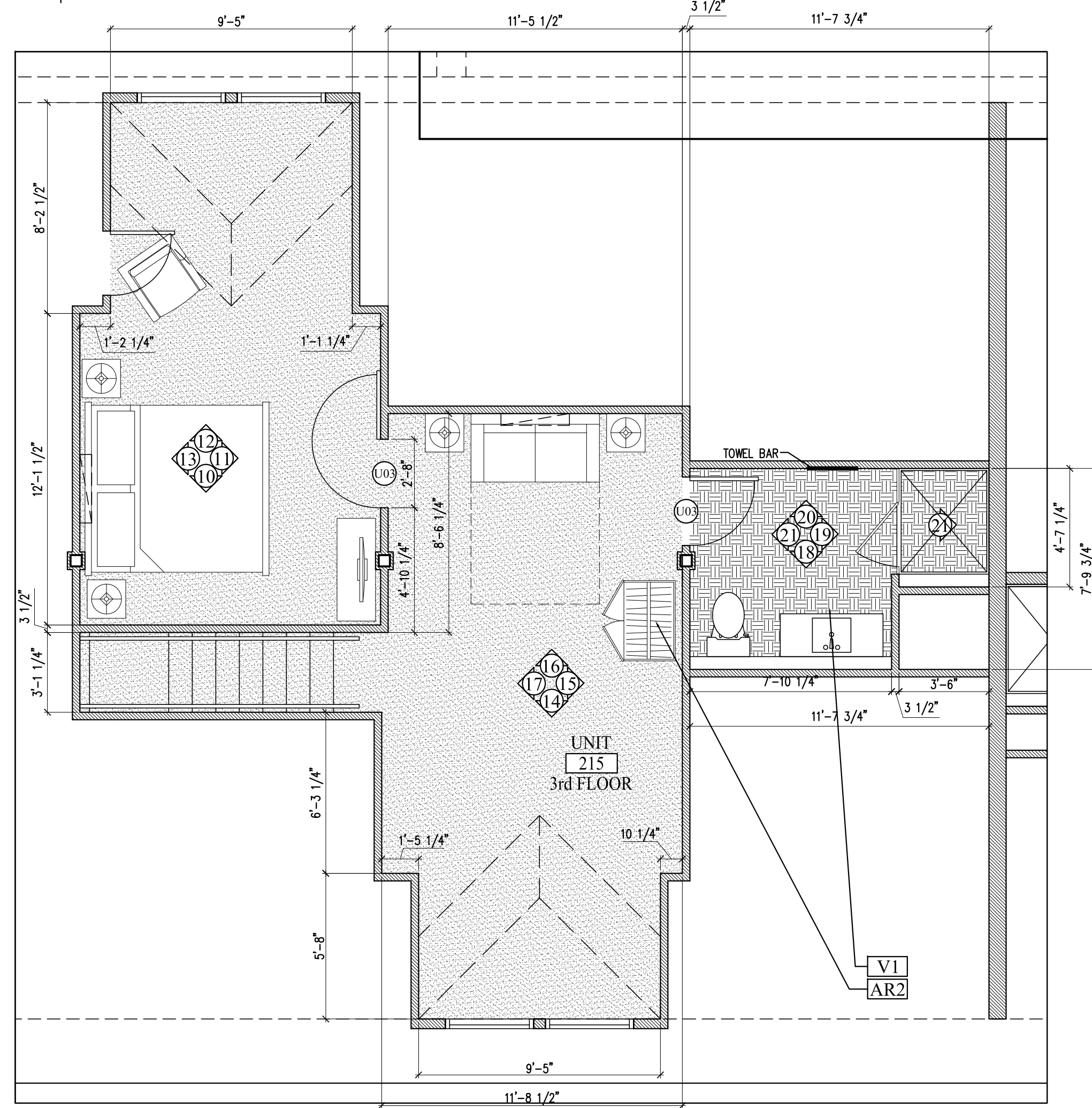


A ENLARGED FLOOR PLAN UNIT 204A SECOND FLOOR

1/4"=1'-0"



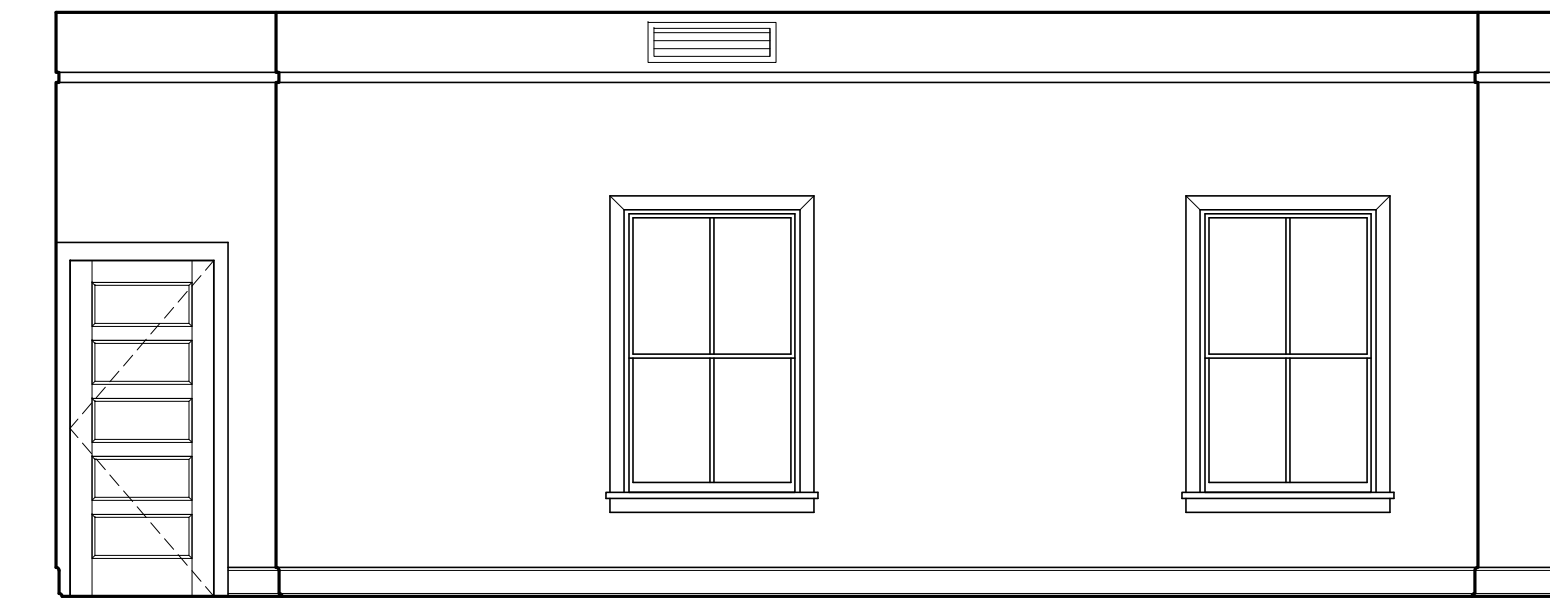
B ENLARGED FLOOR PLAN UNIT 215 THIRD FLOOR

1/4"=1'-0"



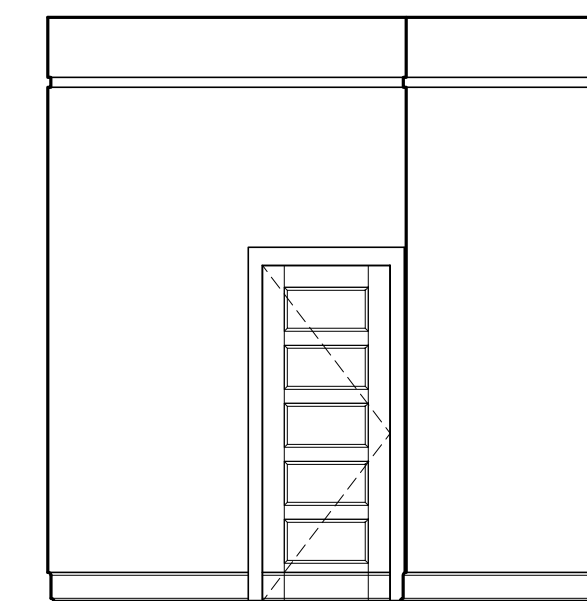
3 INTERIOR ELEVATION UNIT 215

1/4"=1'-0"



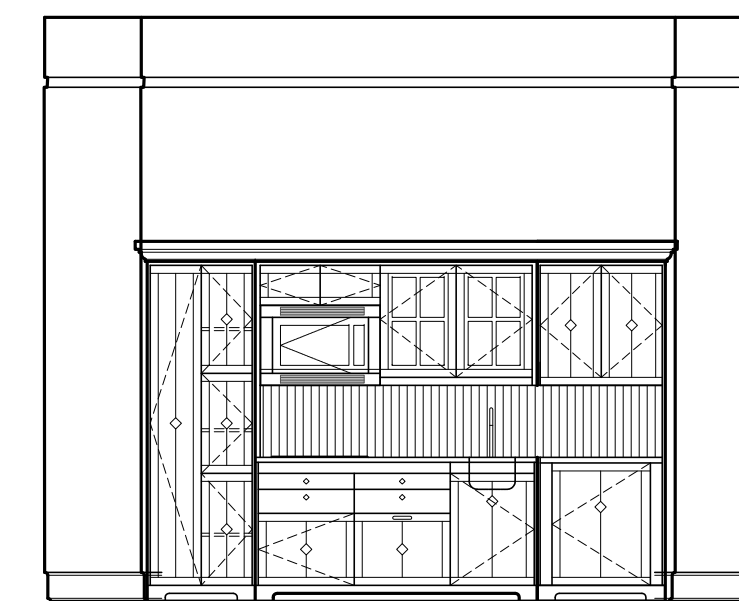
1 INTERIOR ELEVATION UNIT 215

1/4"=1'-0"



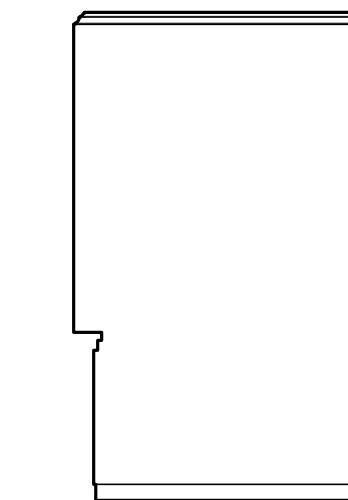
2 INTERIOR ELEVATION UNIT 215

1/4"=1'-0"



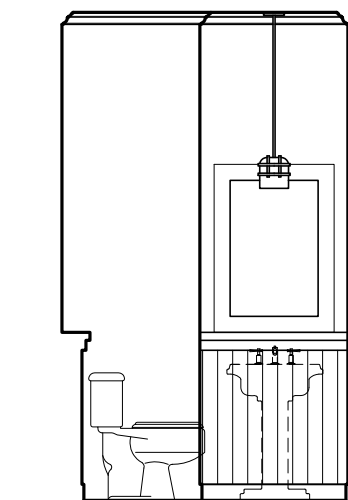
4 INTERIOR ELEVATION UNIT 215

1/4"=1'-0"



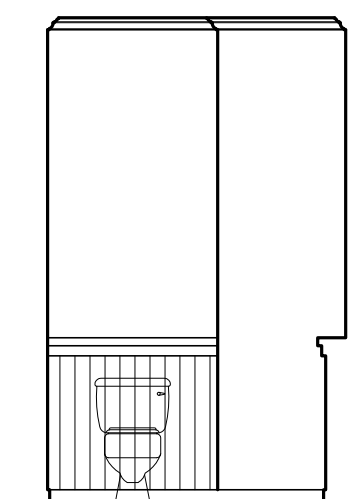
6 INT. ELEV. UNIT 215

1/4"=1'-0"



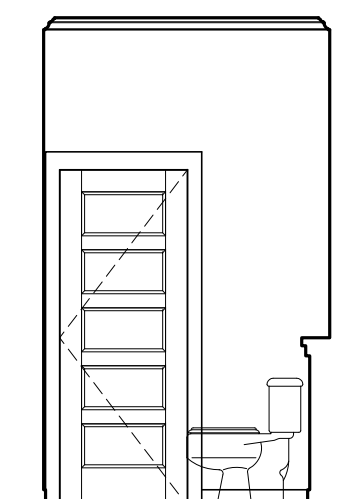
7 INT. ELEV. UNIT 215

1/4"=1'-0"



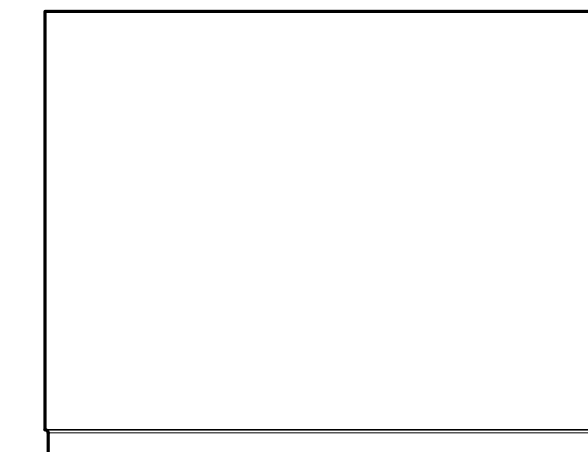
8 INT. ELEV. UNIT 215

1/4"=1'-0"



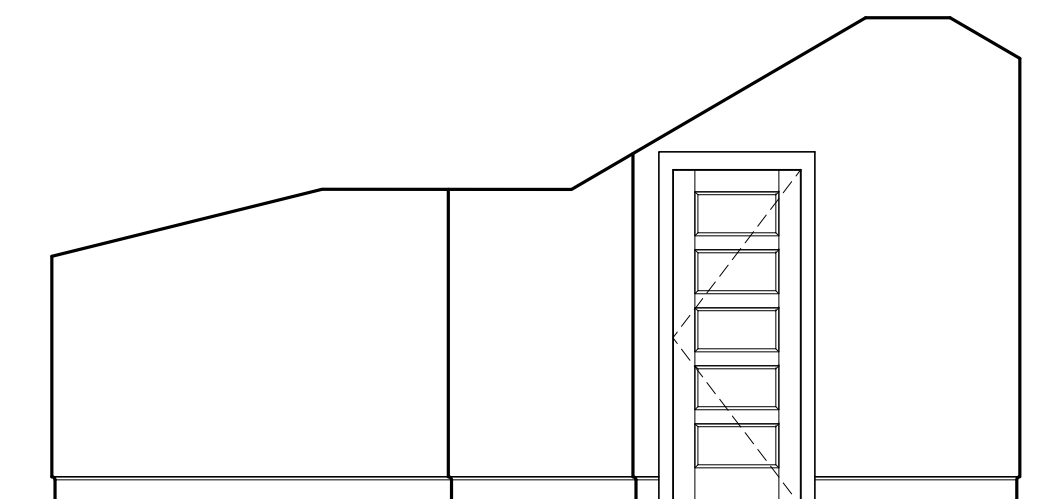
9 INT. ELEV. UNIT 215

1/4"=1'-0"



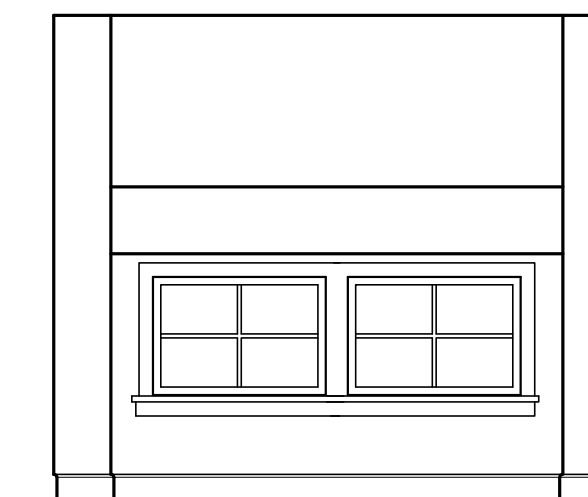
10 INT. ELEV. UNIT 215

1/4"=1'-0"



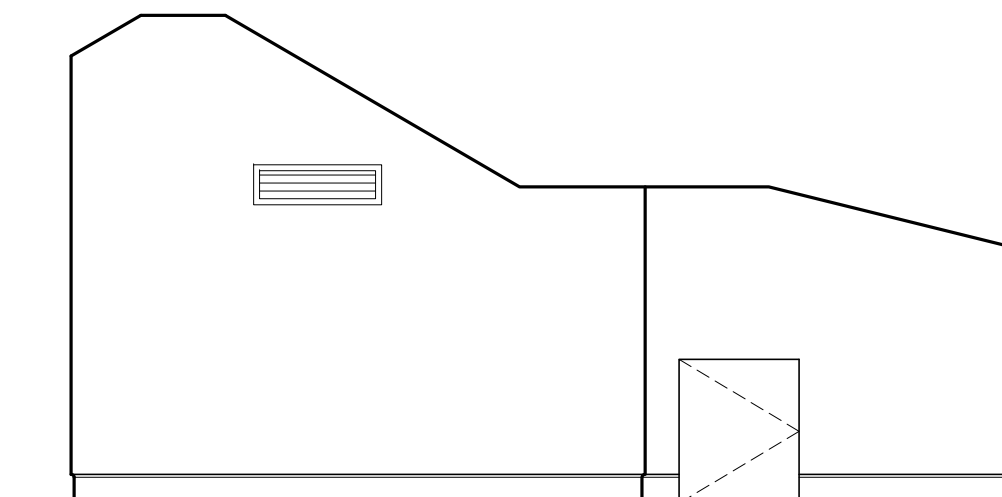
11 INTERIOR ELEVATION UNIT 215

1/4"=1'-0"



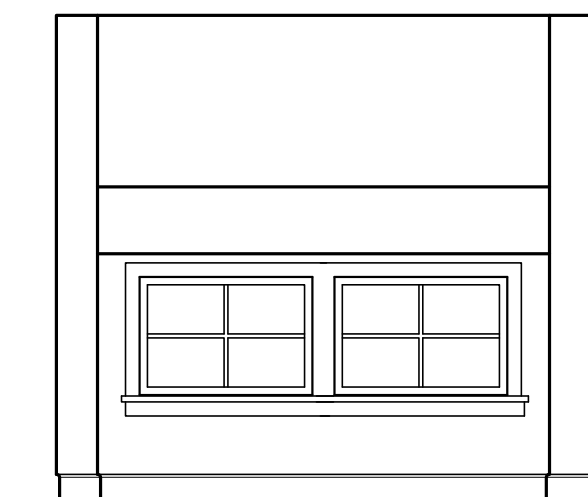
12 INT. ELEV. UNIT 215

1/4"=1'-0"



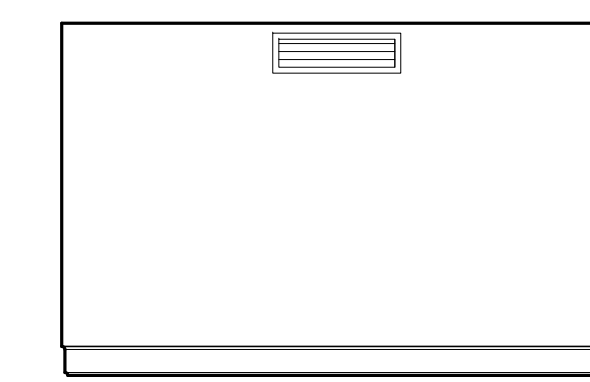
13 INTERIOR ELEVATION UNIT 215

1/4"=1'-0"



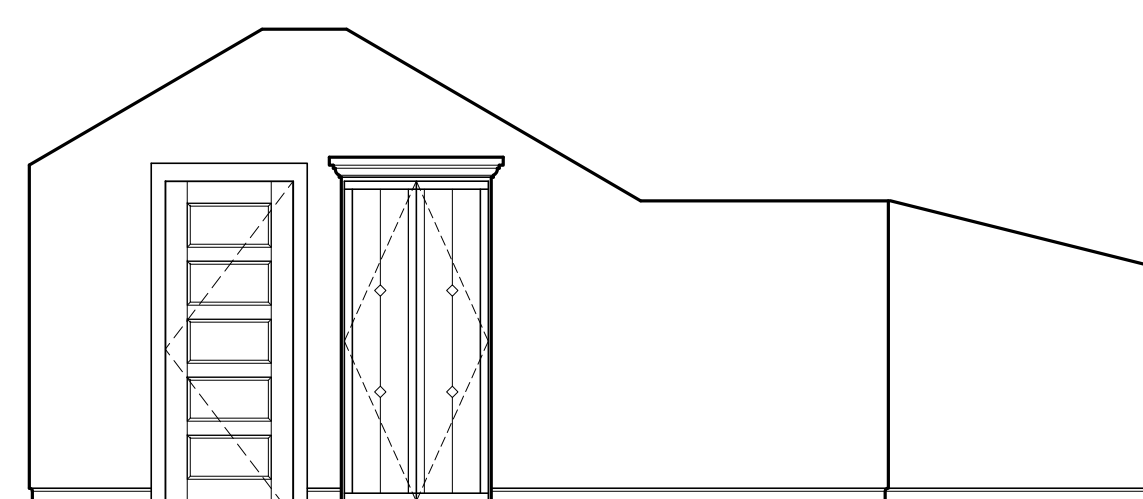
14 INT. ELEV. UNIT 215

1/4"=1'-0"



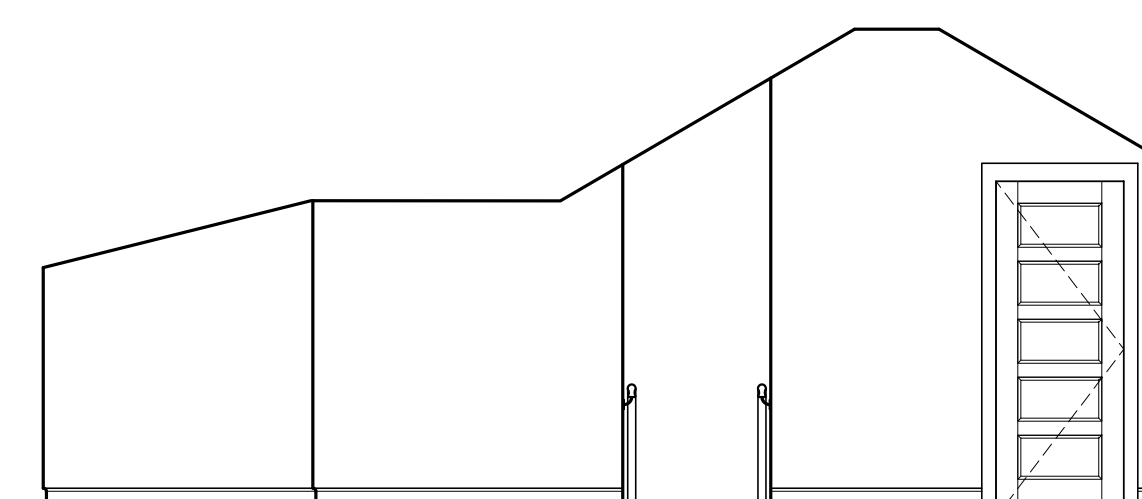
16 INTERIOR ELEVATION UNIT 215

1/4"=1'-0"



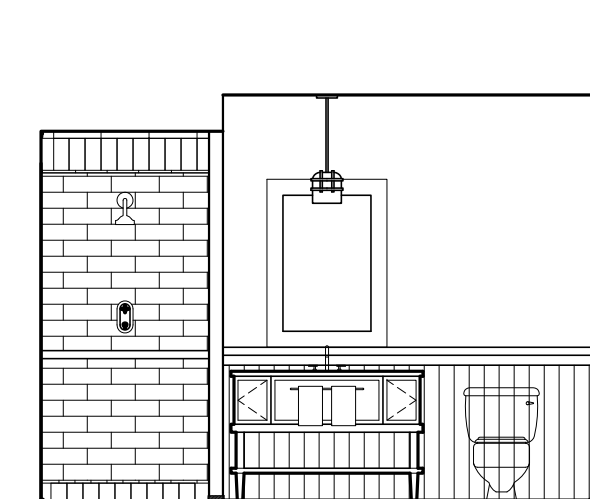
15 INTERIOR ELEVATION UNIT 215

1/4"=1'-0"



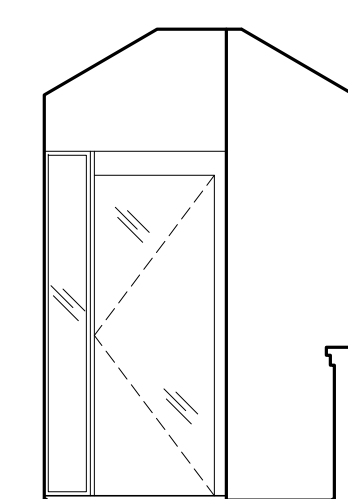
17 INTERIOR ELEVATION UNIT 215

1/4"=1'-0"



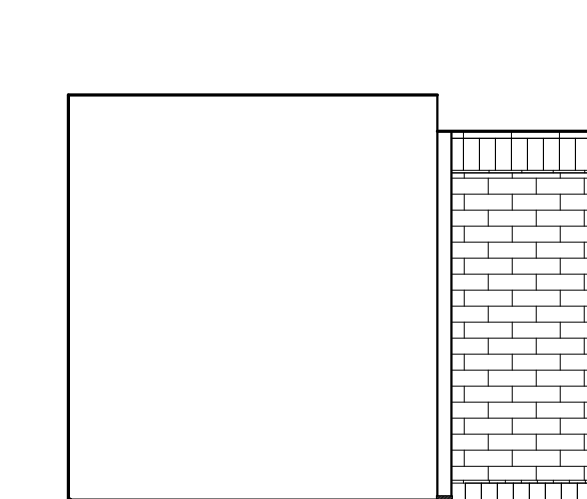
18 INT. ELEV. UNIT 215

1/4"=1'-0"



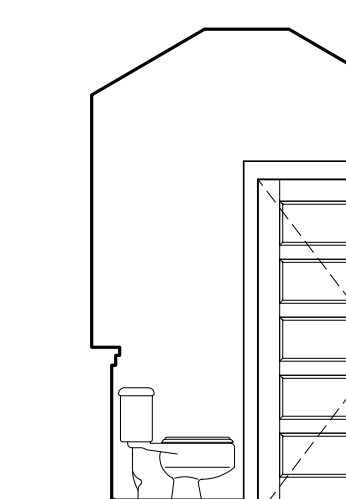
19 INT. ELEV. UNIT 215

1/4"=1'-0"



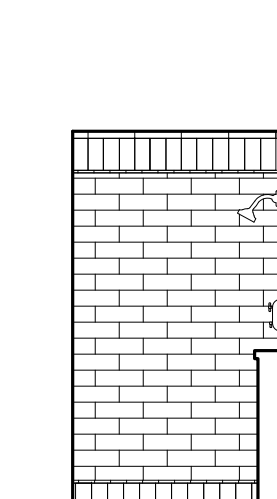
20 INT. ELEV. UNIT 215

1/4"=1'-0"



21 INT. ELEV. UNIT 215

1/4"=1'-0"



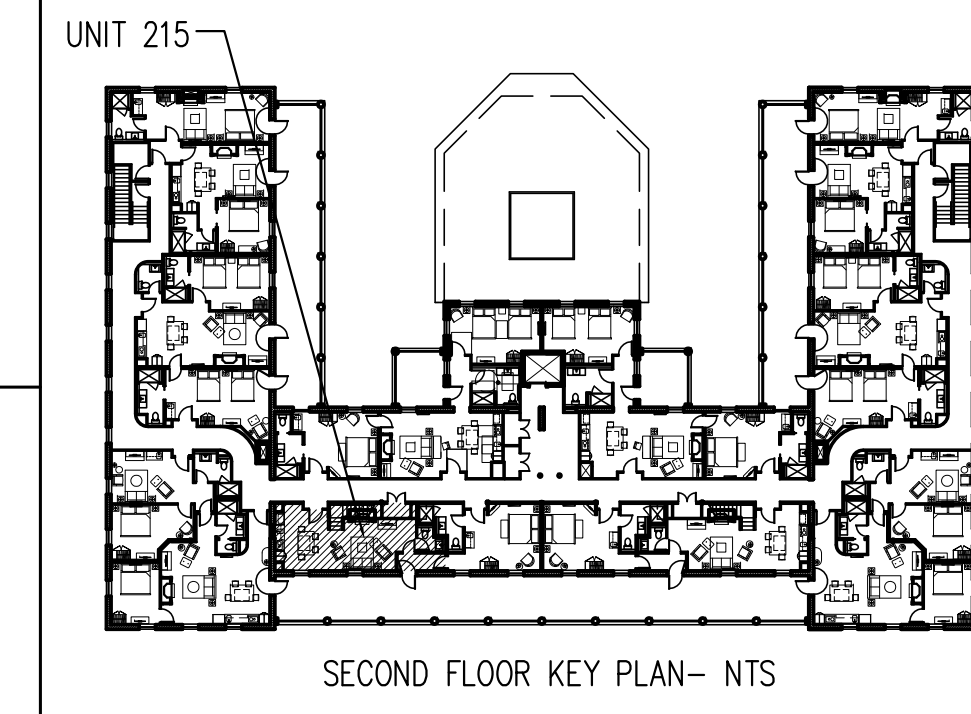
22 INT. ELEV. UNIT 215

1/4"=1'-0"

FLOORING LEGEND

- HARDWOOD
- TILE
- CARPETING

NOTES--
-REFER TO 7.02, 9.00,
9.00A AND 9.00B FOR
MILLWORK DETAILS



Prepared For:
The Inn at Diamond Cove, LLC.
PO BOX 3572
PORTLAND, ME 04101

Interior Designer:
truexculins
INTERIORS
208 BATTERY STREET BURLINGTON, VERMONT 05401 USA
Phone 802.656.2775 800.227.1076
ARCHITECTURE | INTERIOR DESIGN | truexculins.com

Architect:
ARCHETYPE architects
48 Union Wharf Portland, Maine 04101
(207) 772-6022 Fax (207) 772-4056

Project:
THE INN AT DIAMOND COVE, LLC
MCKINLEY COURT
GREAT DIAMOND ISLAND, MAINE

Revisions:
Issued for Construction 03 Feb 14

Date:
03 Feb 2014

Scale:
As Noted

INTERIOR ELEVATIONS UNITS 215

A9.19