

A ENLARGED FLOOR PLAN UNIT 206 SECOND FLOOR
1/4"=1'-0"

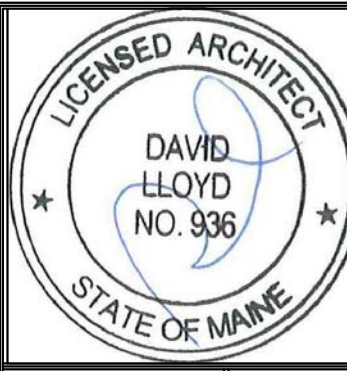
FLOORING LEGEND

- HARDWOOD
- TILE
- CARPETING

NOTES-
 -UNIT 206 SHOWN- 230 IS MIRRORED
 -REFER TO 7.02, 9.00, 9.00A AND 9.00B FOR MILLWORK DETAILS

UNIT 206 UNIT 230

SECOND FLOOR KEY PLAN- NTS



Prepared For:
The Inn at Diamond Cove, LLC.
 PO BOX 3572
 PORTLAND, ME 04101

Interior Designer:
truexculins
 INTERIORS
 208 BATTERY STREET BURLINGTON, VERMONT 05401 USA
 Phone 802.656.2775 800.227.1076
 ARCHITECTURE | INTERIOR DESIGN | truexculins.com

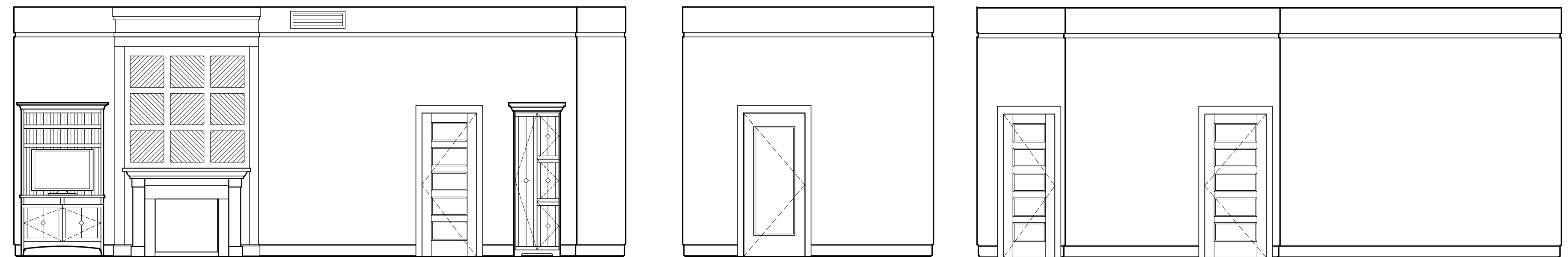
Architect:
ARCHETYPE
 architects
 48 Union Wharf Portland, Maine 04101
 (207) 772-6022 Fax (207) 772-4056

Project:
THE INN AT DIAMOND COVE, LLC
 MCKINLEY COURT
 GREAT DIAMOND ISLAND, MAINE

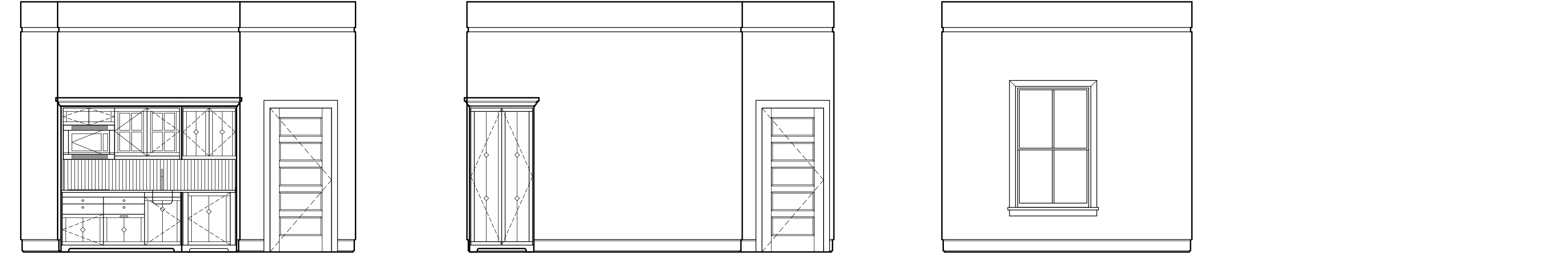
Revisions:
 Issued for Construction 03 Feb 14

Date:
 03 Feb 2014
 Scale:
 As Noted
INTERIOR ELEVATIONS UNITS 206,230

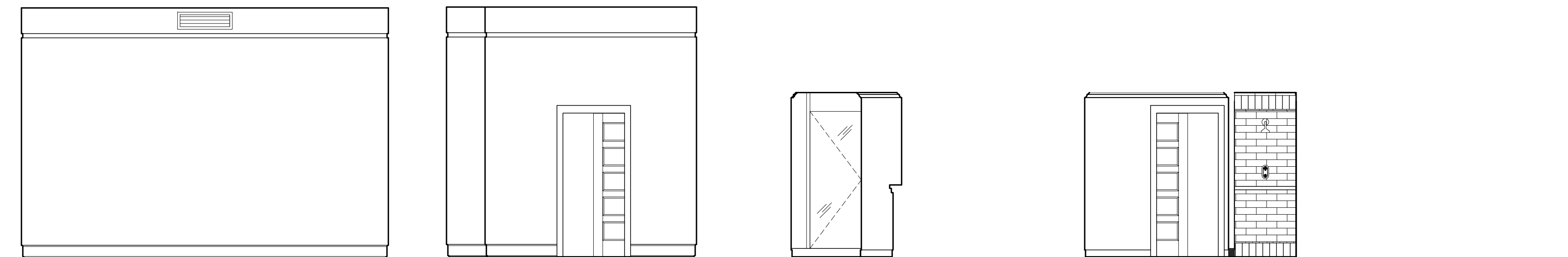
A9.15



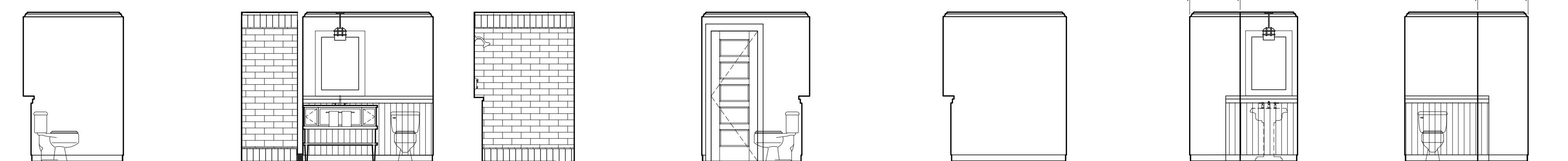
1 | INTERIOR ELEVATION UNIT 206
1/4"=1'-0"
 2 | INTERIOR ELEVATION UNIT 206
1/4"=1'-0"
 3 | INTERIOR ELEVATION UNIT 206
1/4"=1'-0"



4 | INTERIOR ELEVATION UNIT 206
1/4"=1'-0"
 5 | INTERIOR ELEVATION UNIT 206
1/4"=1'-0"
 6 | INTERIOR ELEVATION UNIT 206
1/4"=1'-0"



7 | INTERIOR ELEVATION UNIT 206
1/4"=1'-0"
 8 | INTERIOR ELEVATION UNIT 206
1/4"=1'-0"
 9 | INTERIOR ELEVATION UNIT 206
1/4"=1'-0"
 10 | INTERIOR ELEVATION UNIT 206
1/4"=1'-0"



11 | INTERIOR ELEVATION UNIT 206
1/4"=1'-0"
 12 | INTERIOR ELEVATION UNIT 206
1/4"=1'-0"
 13 | INTERIOR ELEVATION UNIT 206
1/4"=1'-0"
 14 | INTERIOR ELEVATION UNIT 206
1/4"=1'-0"
 15 | INTERIOR ELEVATION UNIT 206
1/4"=1'-0"
 16 | INTERIOR ELEVATION UNIT 206
1/4"=1'-0"
 17 | INTERIOR ELEVATION UNIT 206
1/4"=1'-0"