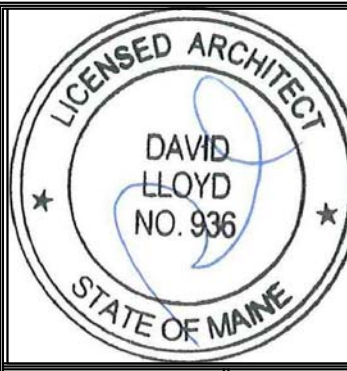
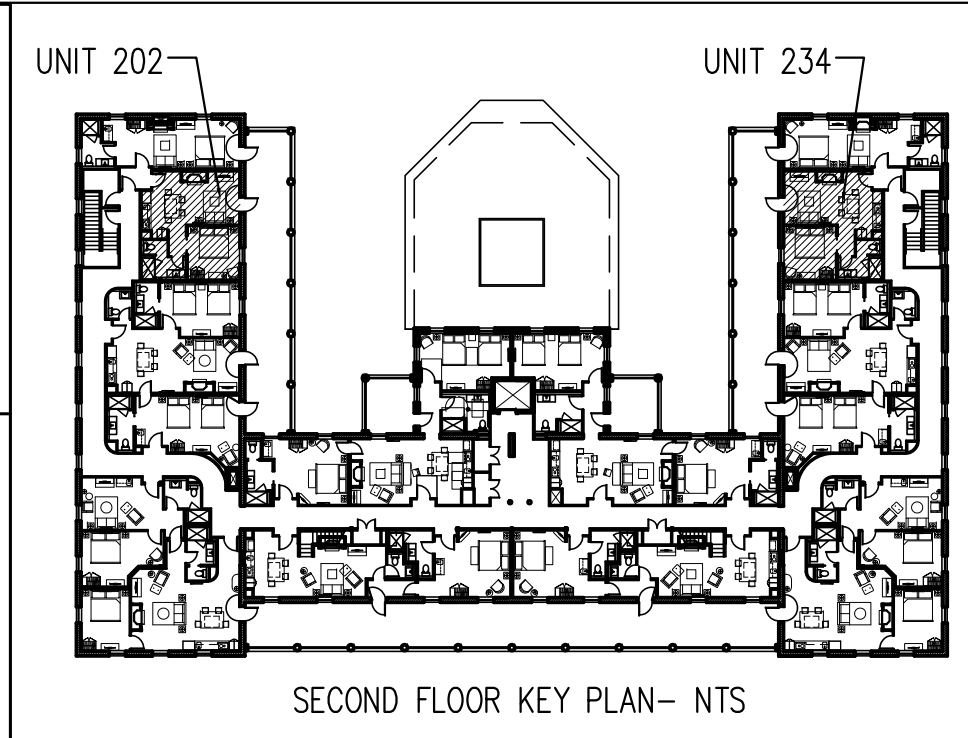


A ENLARGED FLOOR PLAN UNIT 202 SECOND FLOOR  
1/4"=1'-0"

FLOORING LEGEND

- HARDWOOD
- TILE
- CARPETING

NOTES—  
 —UNIT 202 SHOWN— 234 IS MIRRORED  
 —REFER TO 7.02, 9.00, 9.00A AND 9.00B FOR MILLWORK DETAILS



Prepared For:  
**The Inn at Diamond Cove, LLC.**  
 PO BOX 3572  
 PORTLAND, ME 04101

Interior Designer:  
**truexculins**  
 INTERIORS  
 289 BATTERY STREET BURLINGTON, VERMONT 05401 USA  
 Phone 802.656.2775 800.227.1076  
 ARCHITECTURE | INTERIOR DESIGN | truexculins.com

Architect:  
**ARCHETYPE**  
 architects  
 48 Union Wharf Portland, Maine 04101  
 (207) 772-6022 Fax (207) 772-4056

Project:  
**THE INN AT DIAMOND COVE, LLC**  
 McKINLEY COURT  
 GREAT DIAMOND ISLAND, MAINE

Revisions:  
 Issued for Construction 03 Feb 14

Date: 03 Feb 2014  
 Scale: As Noted  
**INTERIOR ELEVATIONS UNITS 202, 234**

**A9.14**

1 INTERIOR ELEVATION UNIT 202  
1/4"=1'-0"

2 INTERIOR ELEVATION UNIT 202  
1/4"=1'-0"

3 INTERIOR ELEVATION UNIT 202  
1/4"=1'-0"

4 INTERIOR ELEVATION UNIT 202  
1/4"=1'-0"

5 INTERIOR ELEVATION UNIT 202  
1/4"=1'-0"

6 INTERIOR ELEVATION UNIT 202  
1/4"=1'-0"

7 INTERIOR ELEVATION UNIT 202  
1/4"=1'-0"

8 INTERIOR ELEVATION UNIT 202  
1/4"=1'-0"

9 INTERIOR ELEVATION UNIT 202  
1/4"=1'-0"

10 INTERIOR ELEVATION UNIT 202  
1/4"=1'-0"

11 INTERIOR ELEVATION UNIT 202  
1/4"=1'-0"

12 INTERIOR ELEVATION UNIT 202  
1/4"=1'-0"

13 INTERIOR ELEVATION UNIT 202  
1/4"=1'-0"

14 INTERIOR ELEVATION UNIT 202  
1/4"=1'-0"