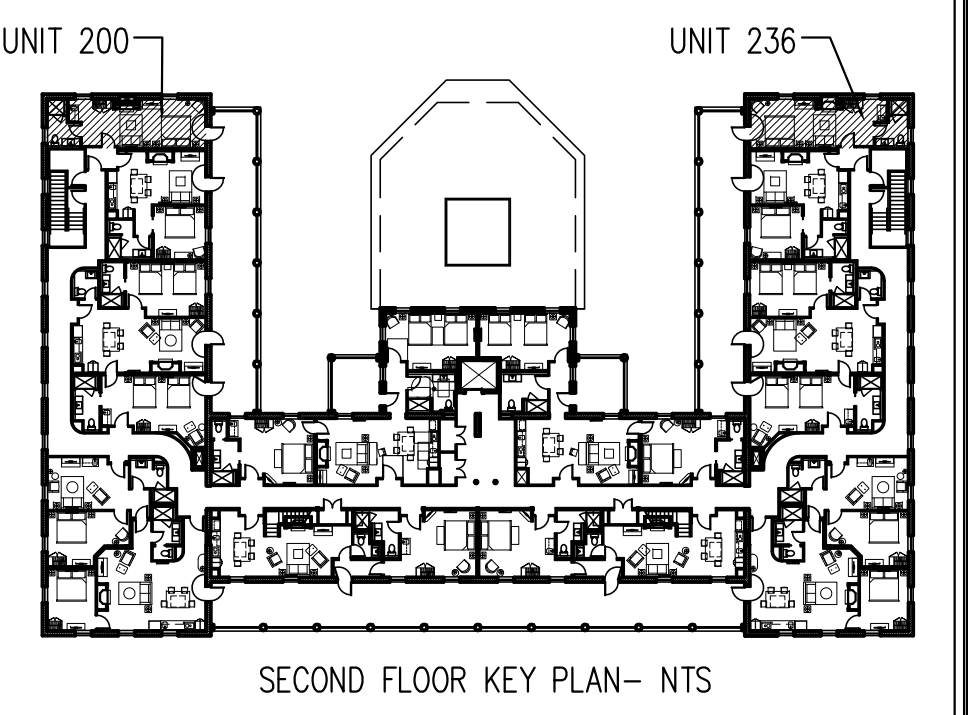


A | ENLARGED FLOOR PLAN UNIT 200 SECOND FLOOR
1/4"=1'-0"

FLOORING LEGEND

- HARDWOOD
- TILE
- CARPETING

NOTES-
 -UNIT 200 SHOWN- 236 IS MIRRORED
 -REFER TO 7.02, 9.00, 9.00A AND 9.00B FOR MILLWORK DETAILS



LICENSED ARCHITECT
 DAVID LLOYD
 NO. 936
 STATE OF MAINE

Prepared For:
The Inn at Diamond Cove, LLC.
 PO BOX 3572
 PORTLAND, ME 04101

Interior Designer:
truexculins
 INTERIORS
 289 BATTERY STREET BURLINGTON, VERMONT 05401 USA
 Phone 802.656.2775 800.227.1076
 ARCHITECTURE | INTERIOR DESIGN | truexculins.com

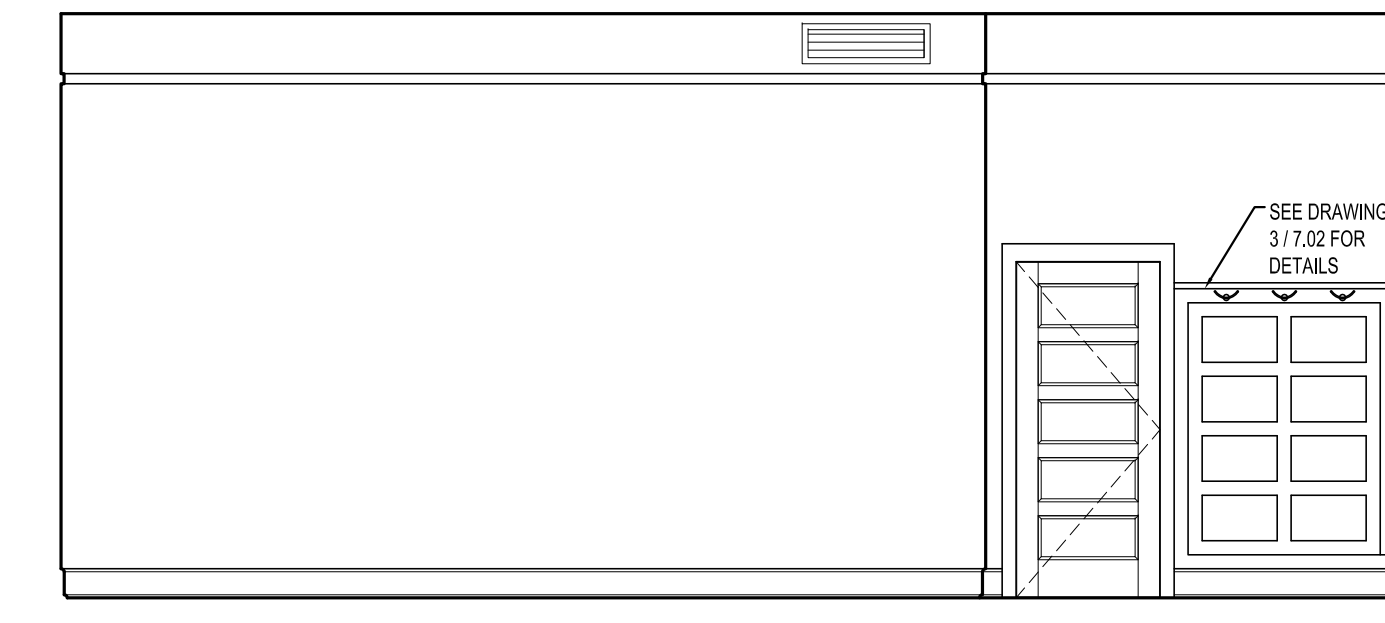
Architect:
ARCHETYPE
 architects
 48 Union Wharf Portland, Maine 04101
 (207) 772-6022 Fax (207) 772-4056

Project:
**THE INN AT
 DIAMOND COVE,
 LLC**
 McKINLEY COURT
 GREAT DIAMOND ISLAND, MAINE

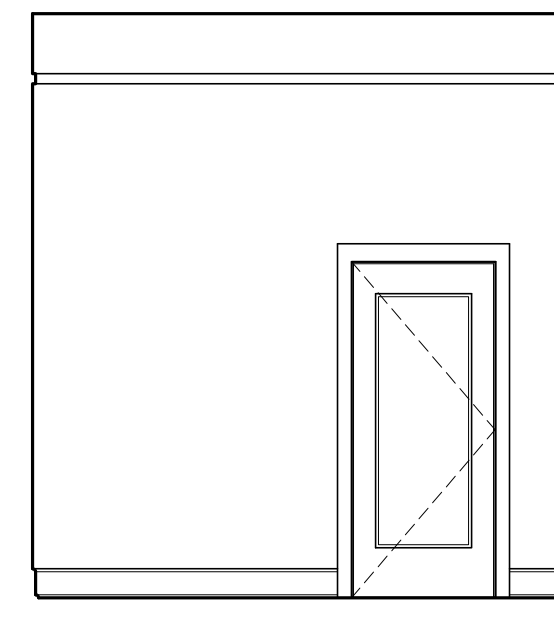
Revisions:
 Issued for Construction 03 Feb 14

Date: 03 Feb 2014
 Scale: As Noted

**INTERIOR
 ELEVATIONS UNITS
 200, 236**



1 | INTERIOR ELEVATION UNIT 200
1/4"=1'-0"



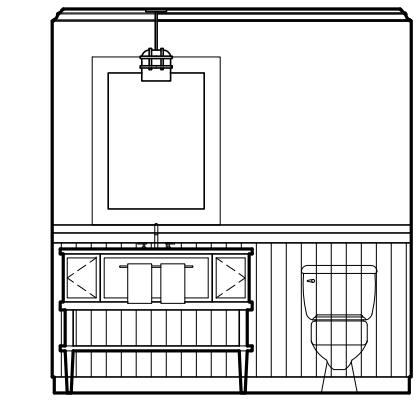
2 | INTERIOR ELEVATION UNIT 200
1/4"=1'-0"



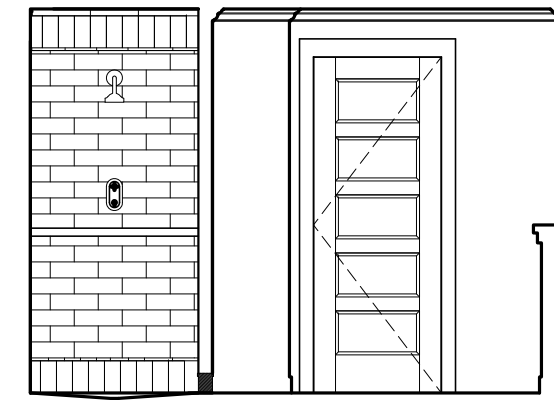
3 | INTERIOR ELEVATION UNIT 200
1/4"=1'-0"



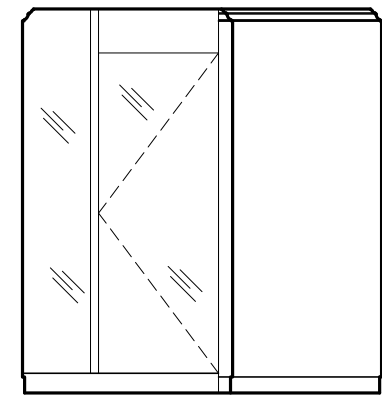
4 | INTERIOR ELEVATION UNIT 200
1/4"=1'-0"



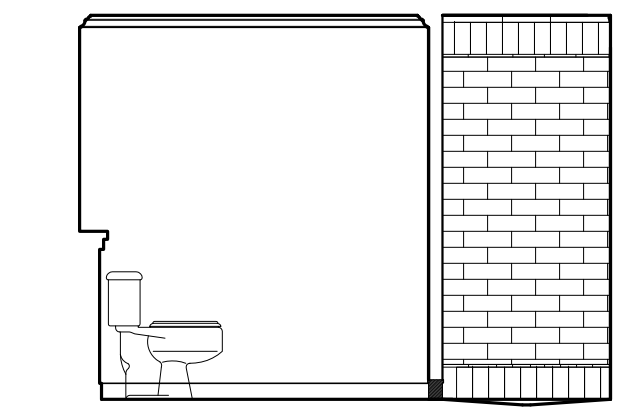
5 | INTERIOR ELEVATION UNIT 200
1/4"=1'-0"



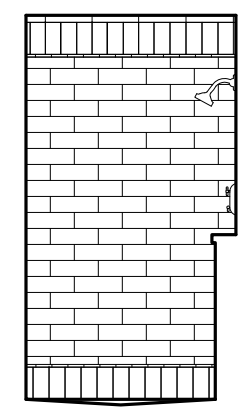
6 | INTERIOR ELEVATION UNIT 200
1/4"=1'-0"



7 | INTERIOR ELEVATION UNIT 200
1/4"=1'-0"



8 | INTERIOR ELEVATION UNIT 200
1/4"=1'-0"



9 | INTERIOR ELEVATION UNIT 200
1/4"=1'-0"