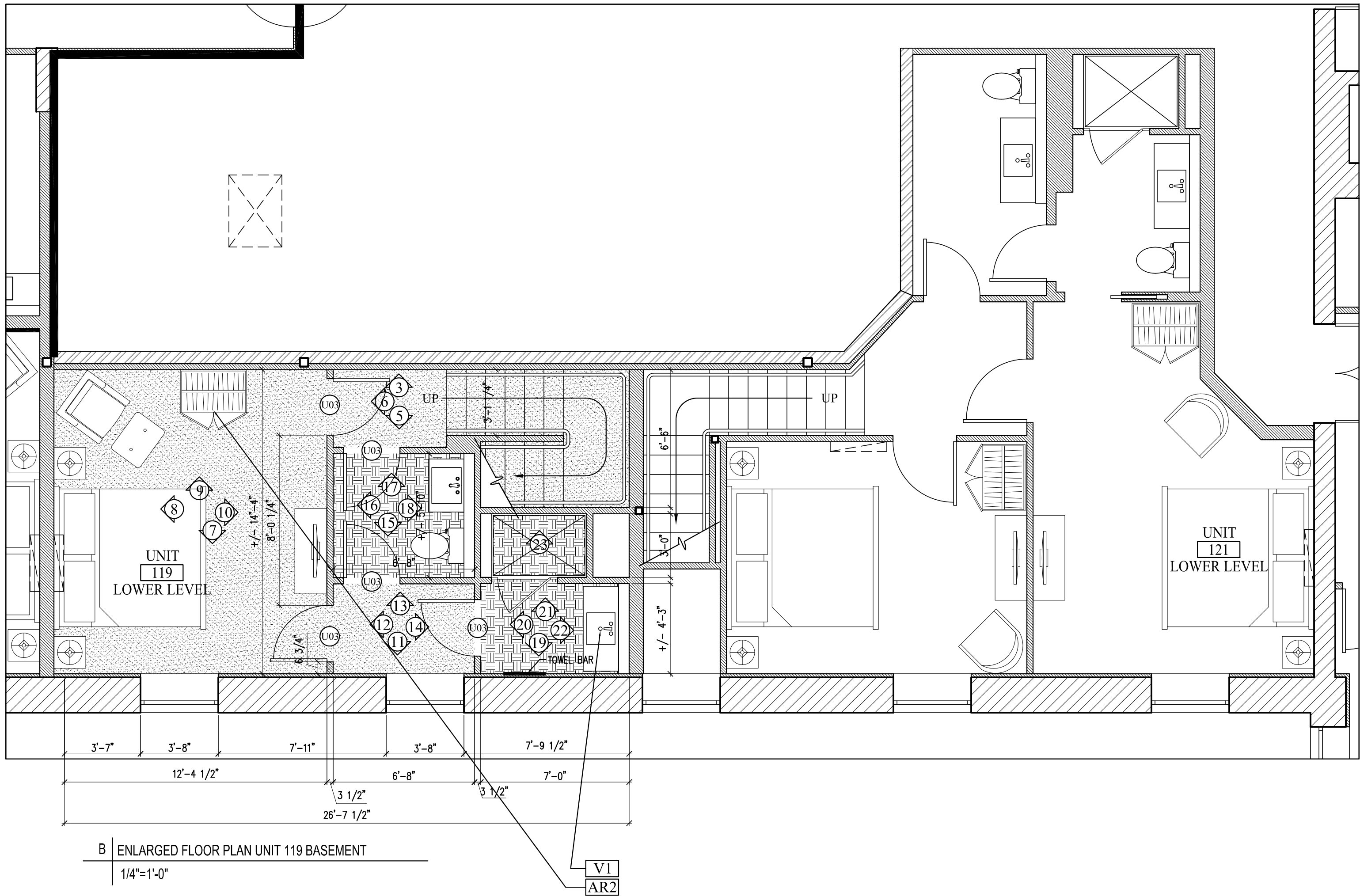
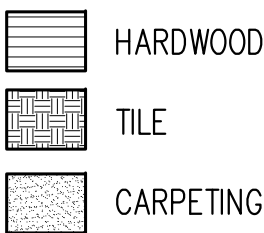


A | ENLARGED FLOOR PLAN UNIT 119 FIRST FLOOR
1/4"=1'-0"

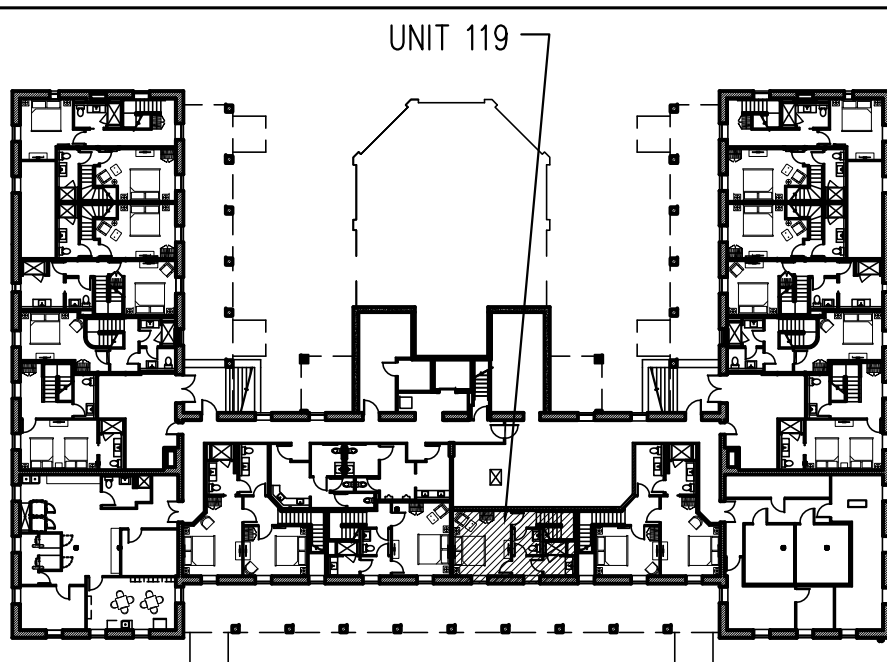


B | ENLARGED FLOOR PLAN UNIT 119 BASEMENT
1/4"=1'-0"

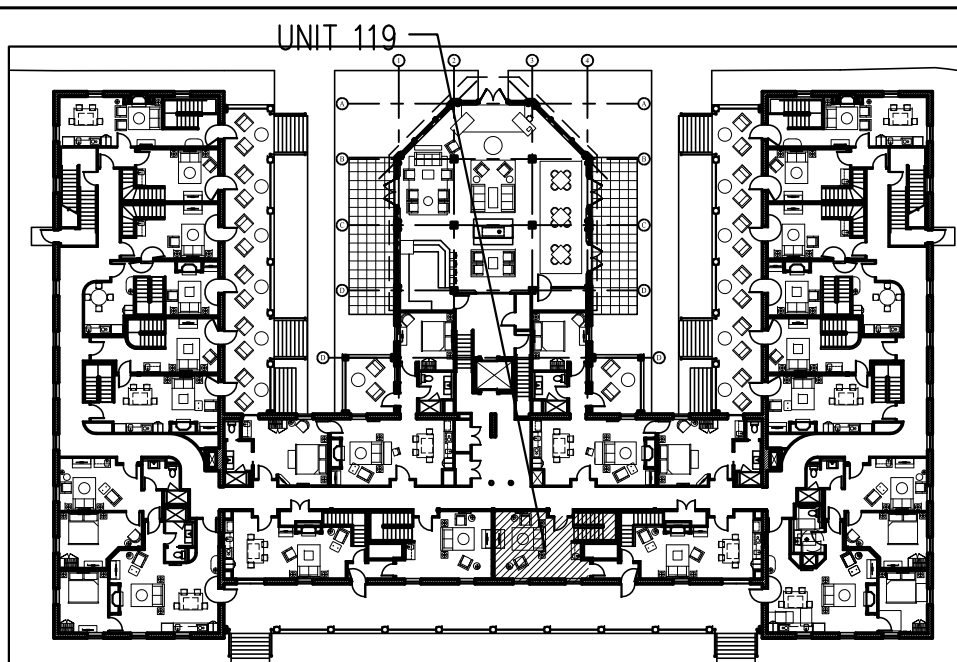
FLOORING LEGEND



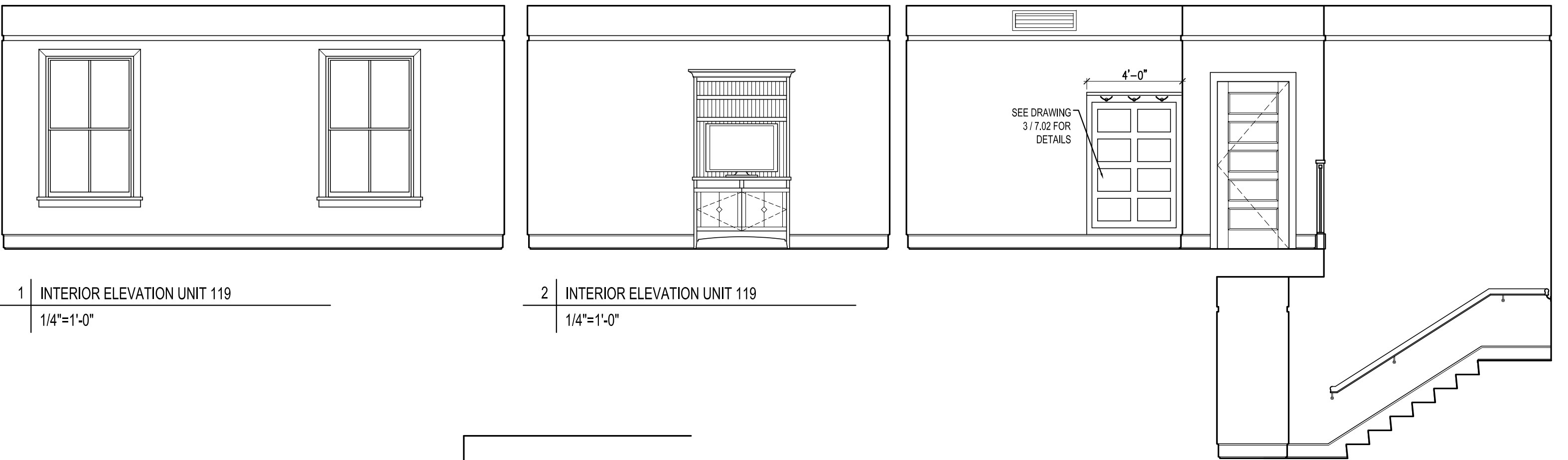
NOTES-
-REFER TO 7.02, 9.00,
9.00A AND 9.00B FOR
MILLWORK DETAILS



BASEMENT KEY PLAN- NTS



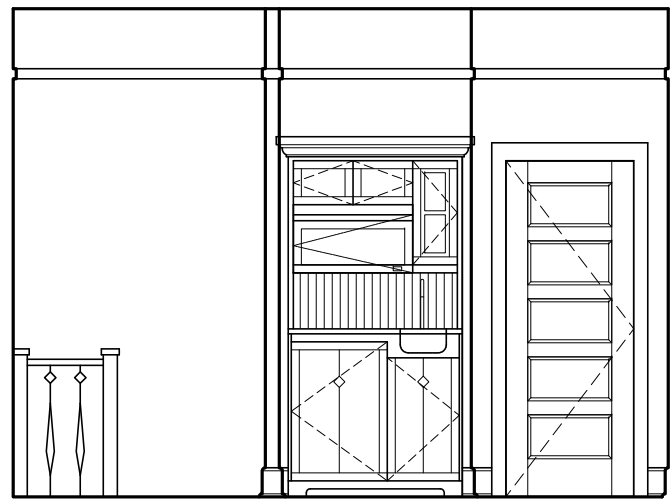
FIRST FLOOR KEY PLAN- NTS



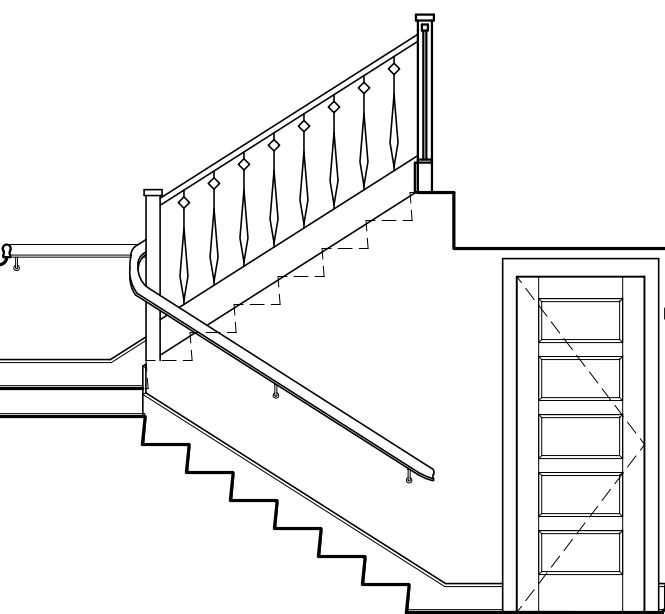
1 | INTERIOR ELEVATION UNIT 119
1/4"=1'-0"

2 | INTERIOR ELEVATION UNIT 119
1/4"=1'-0"

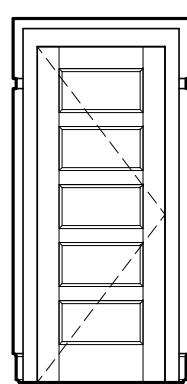
3 | INTERIOR ELEVATION UNIT 119
1/4"=1'-0"



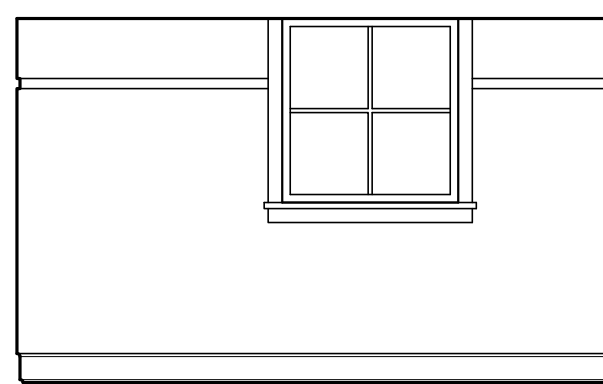
4 | INTERIOR ELEVATION UNIT 119
1/4"=1'-0"



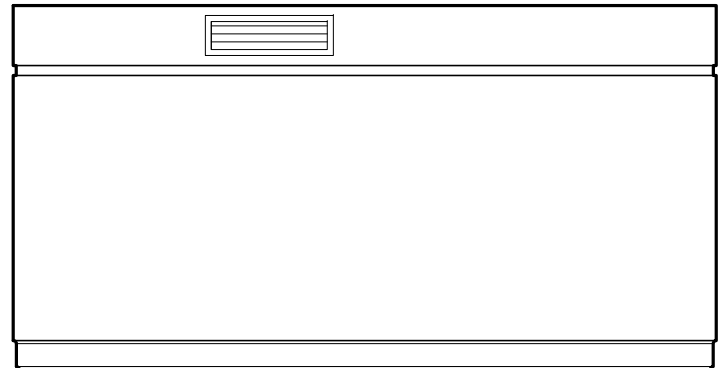
5 | INTERIOR ELEVATION UNIT 119
1/4"=1'-0"



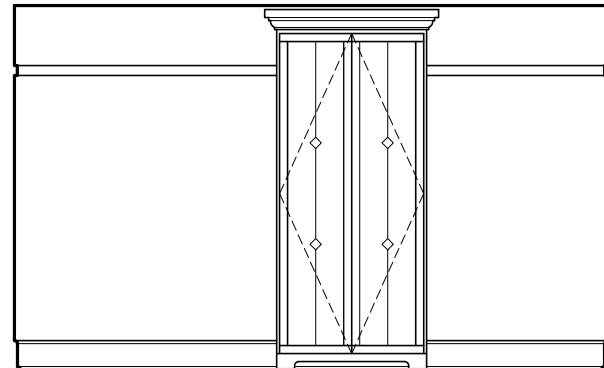
6 | INTERIOR ELEVATION UNIT 119
1/4"=1'-0"



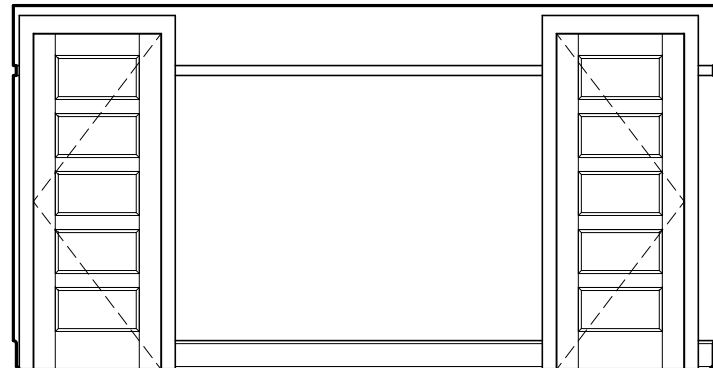
7 | INTERIOR ELEVATION UNIT 119
1/4"=1'-0"



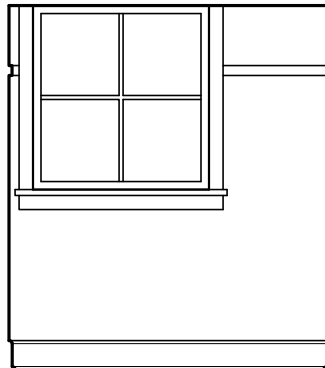
8 | INTERIOR ELEVATION UNIT 119
1/4"=1'-0"



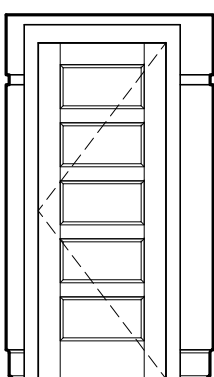
9 | INTERIOR ELEVATION UNIT 119
1/4"=1'-0"



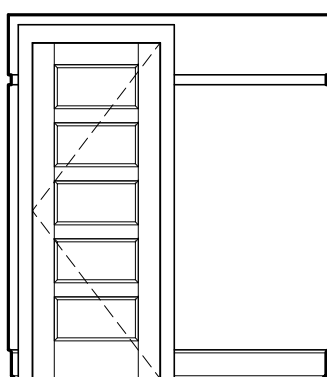
10 | INTERIOR ELEVATION UNIT 119
1/4"=1'-0"



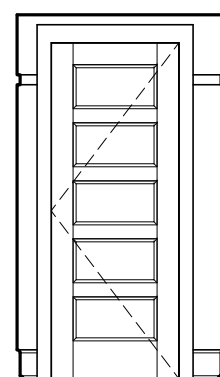
11 | INTERIOR ELEVATION UNIT 119
1/4"=1'-0"



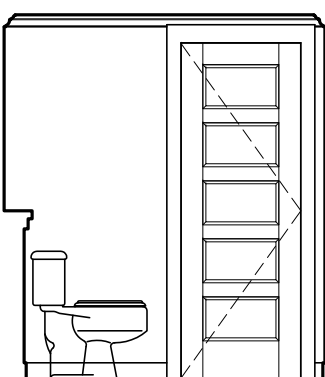
12 | INTERIOR ELEVATION UNIT 119
1/4"=1'-0"



13 | INTERIOR ELEVATION UNIT 119
1/4"=1'-0"



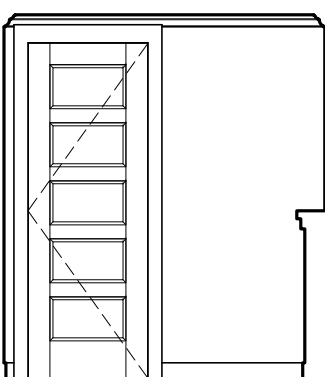
14 | INT. ELEV. UNIT 119
1/4"=1'-0"



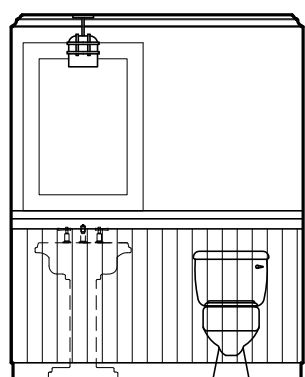
15 | INT. ELEV. UNIT 119
1/4"=1'-0"



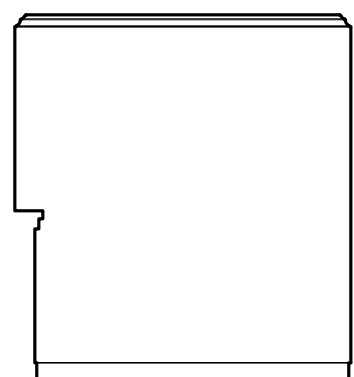
16 | INT. ELEV. UNIT 119
1/4"=1'-0"



17 | INT. ELEV. UNIT 119
1/4"=1'-0"



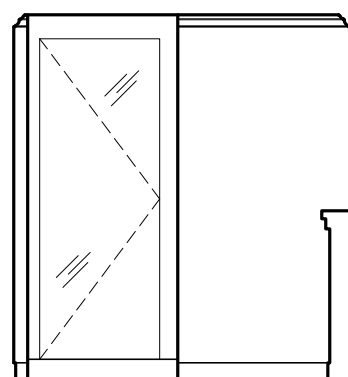
18 | INTERIOR ELEVATION UNIT 119
1/4"=1'-0"



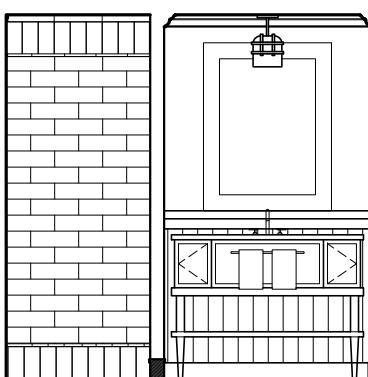
19 | INTERIOR ELEVATION UNIT 119
1/4"=1'-0"



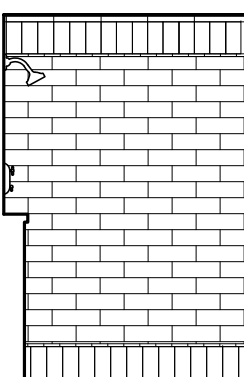
20 | INTERIOR ELEVATION UNIT 119
1/4"=1'-0"



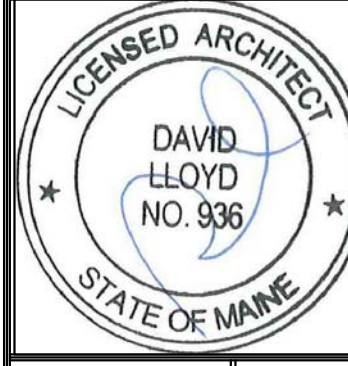
21 | INTERIOR ELEVATION UNIT 119
1/4"=1'-0"



22 | INTERIOR ELEVATION UNIT 119
1/4"=1'-0"



23 | INTERIOR ELEVATION UNIT 119
1/4"=1'-0"



Prepared For:
**The Inn at Diamond
Cove, LLC.**

PO BOX 3572
PORTLAND, ME 04101

Interior Designer:
truexculins
INTERIORS

209 BATTERY STREET BURLINGTON, VERMONT 05401 USA
Phone 802.656.2775 800.227.1076
ARCHITECTURE | INTERIOR DESIGN | truexculins.com

Architect:
ARCHETYPE
architects

48 Union Wharf Portland, Maine 04101
(207) 772-6022 Fax (207) 772-4056

Project:
**THE INN AT
DIAMOND COVE,
LLC**

McKinley Court
GREAT DIAMOND ISLAND, MAINE

Revisions:
Issued for Construction 03 Feb 14

Date:
03 Feb 2014

Scale:

As Noted

**INTERIOR
ELEVATIONS UNITS
119**

A9.12A