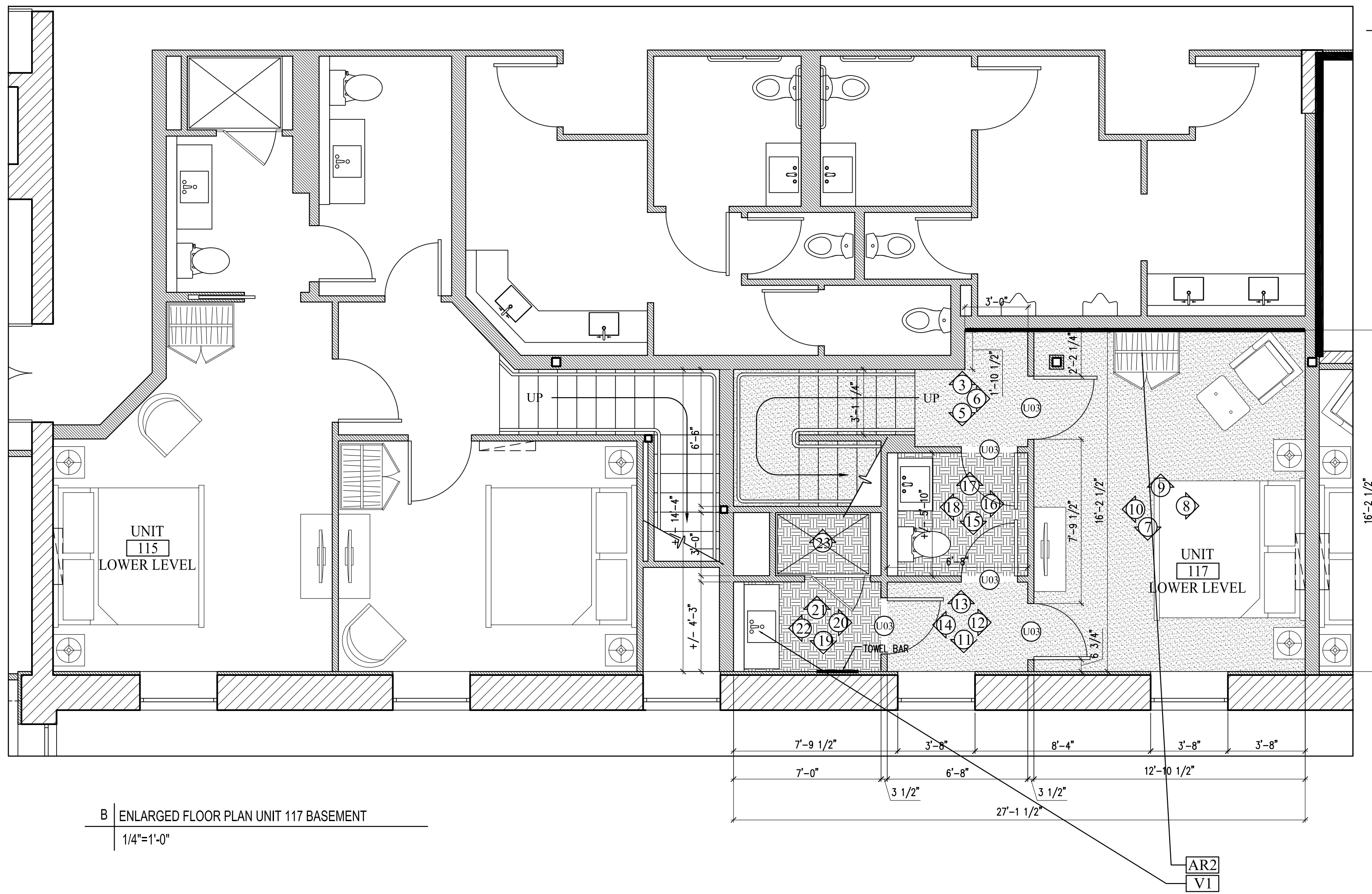


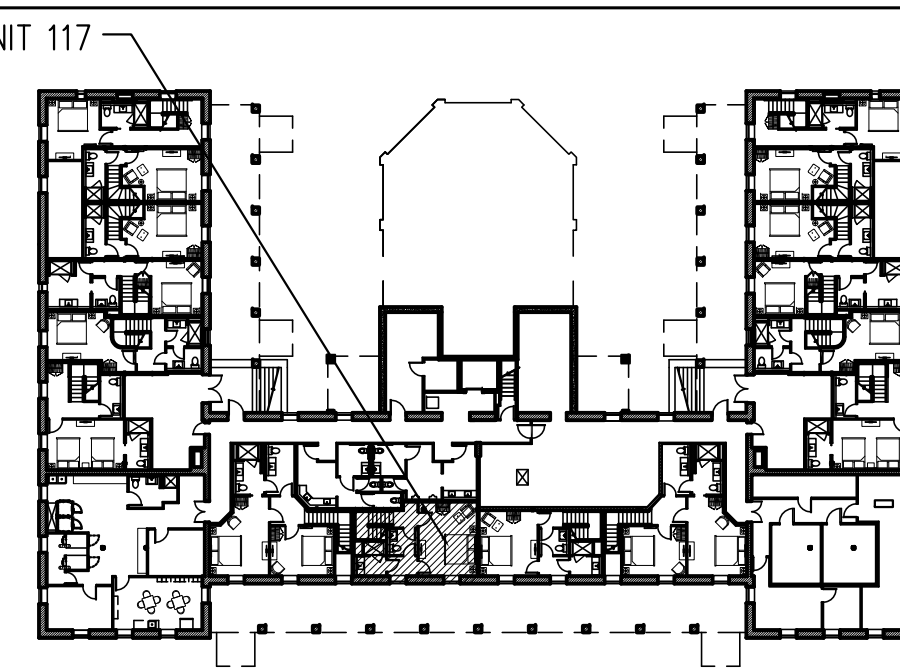
A ENLARGED FLOOR PLAN UNIT 117 FIRST FLOOR
1/4"=1'-0"



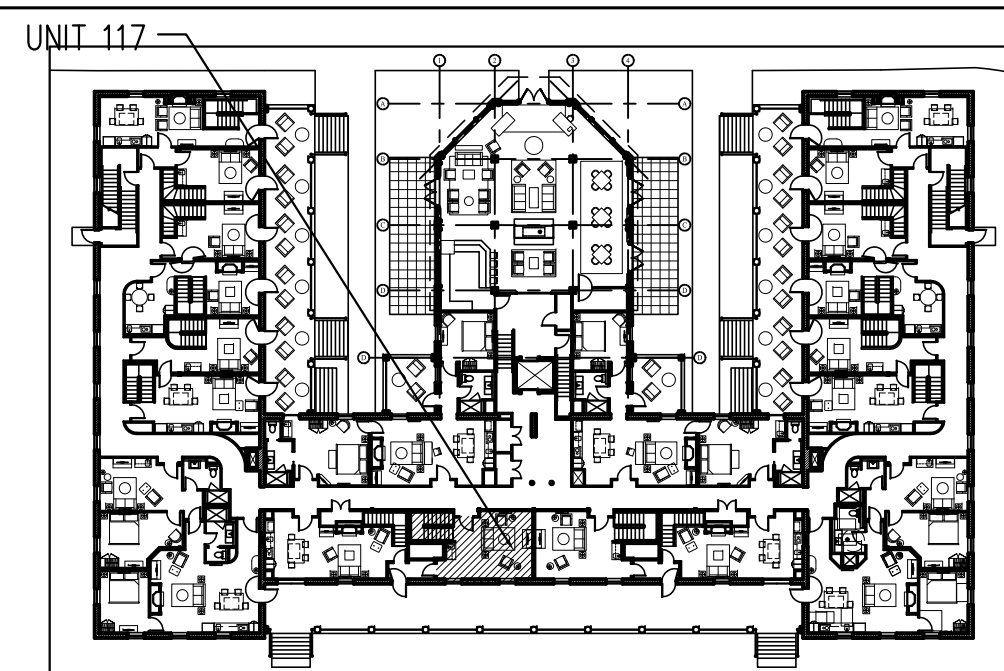
B ENLARGED FLOOR PLAN UNIT 117 BASEMENT
1/4"=1'-0"

FLOORING LEGEND
 HARDWOOD
 TILE
 CARPETING

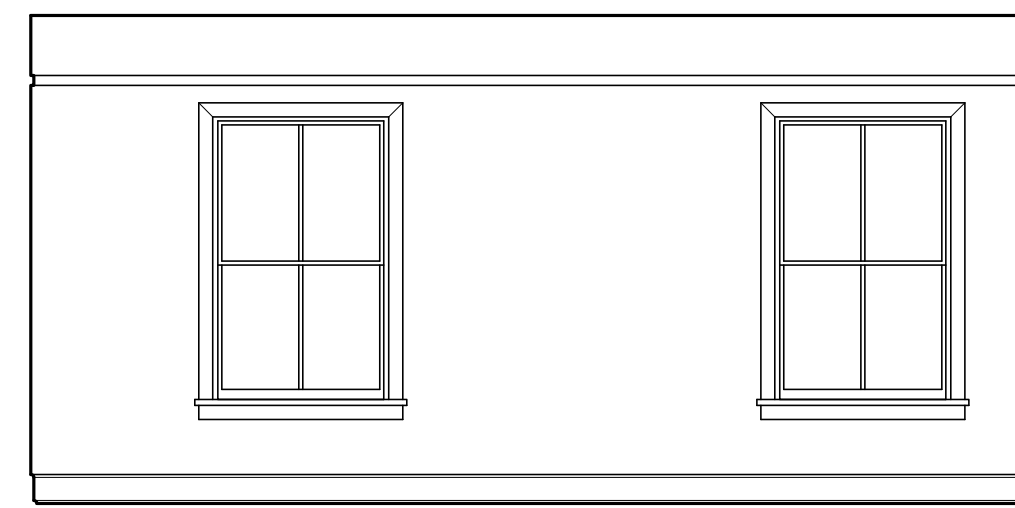
NOTES—
 —REFER TO 7.02, 9.00,
 9.00A AND 9.00B FOR
 MILLWORK DETAILS



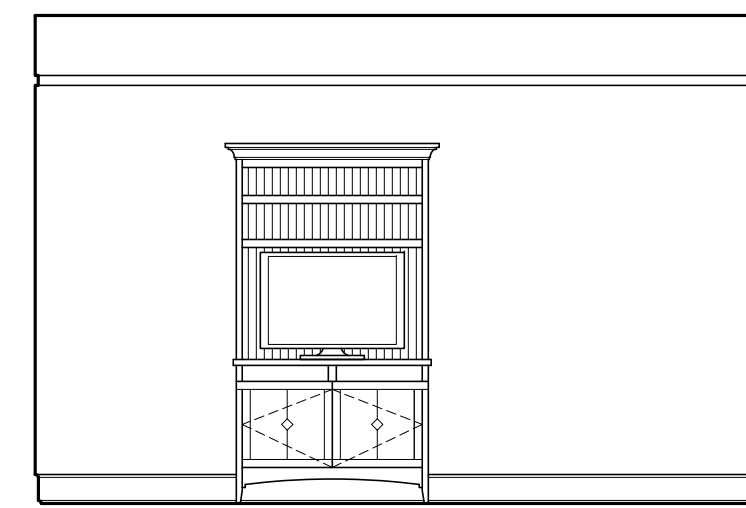
BASEMENT KEY PLAN- NTS



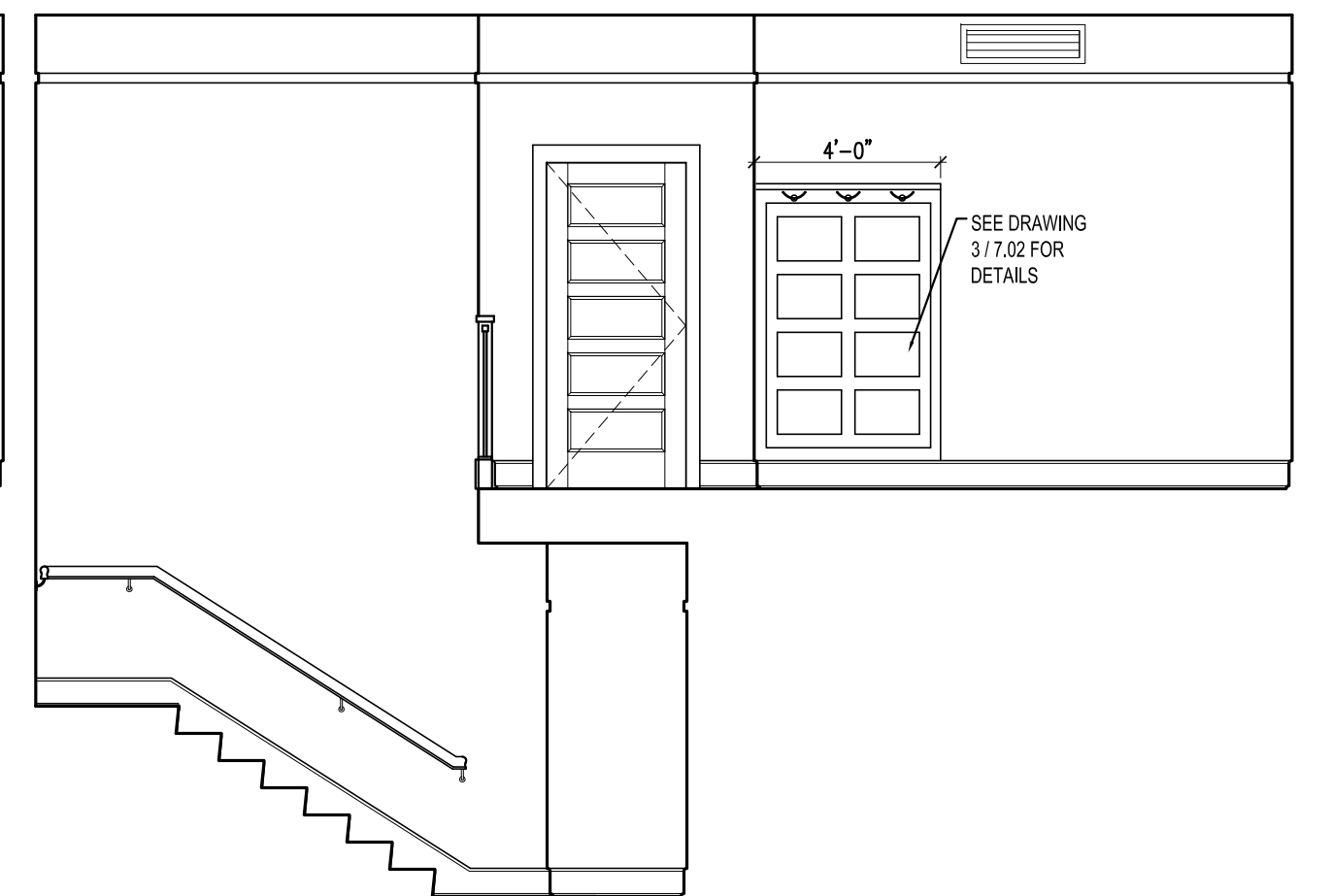
FIRST FLOOR KEY PLAN- NTS



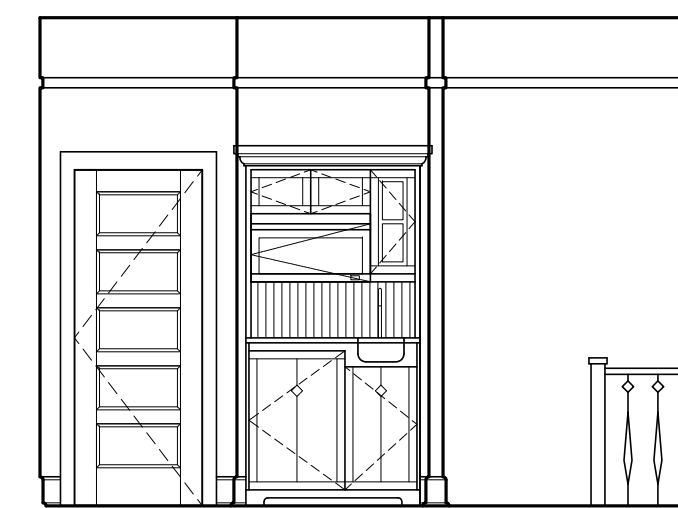
1 INTERIOR ELEVATION UNIT 117
1/4"=1'-0"



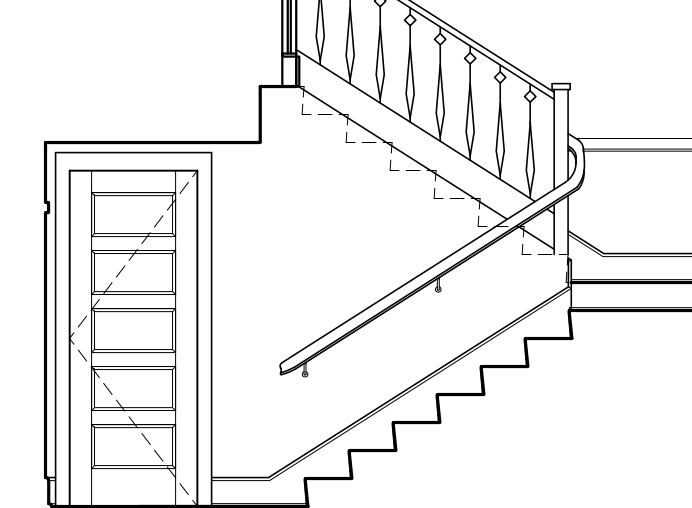
2 INTERIOR ELEVATION UNIT 117
1/4"=1'-0"



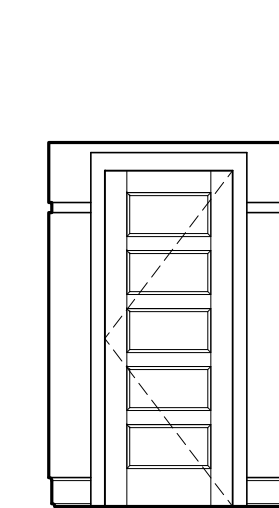
3 INTERIOR ELEVATION UNIT 117
1/4"=1'-0"



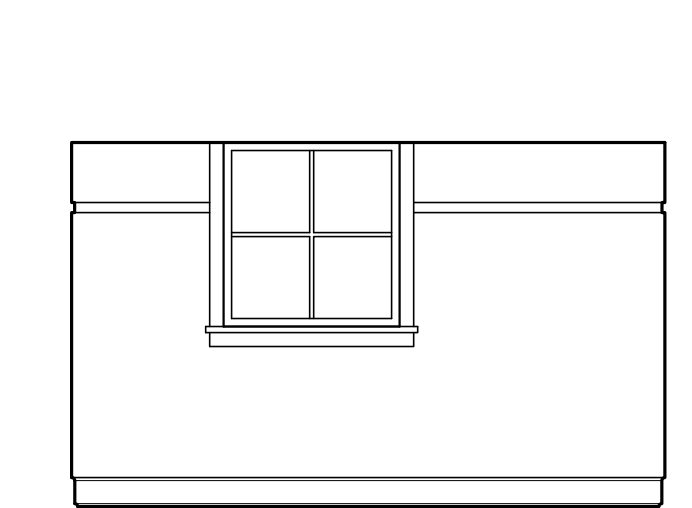
4 INTERIOR ELEVATION UNIT 117
1/4"=1'-0"



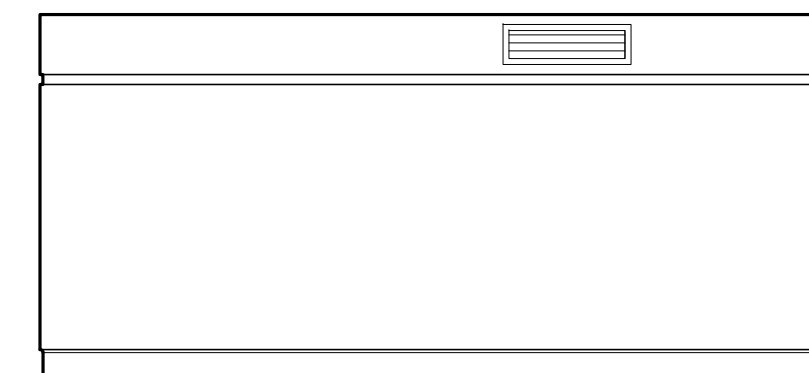
5 INTERIOR ELEVATION UNIT 117
1/4"=1'-0"



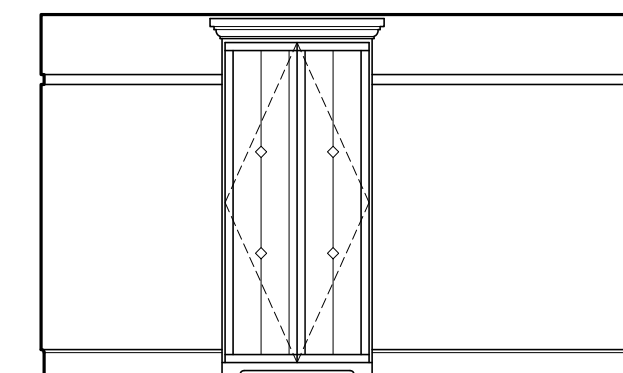
6 INTERIOR ELEVATION UNIT 117
1/4"=1'-0"



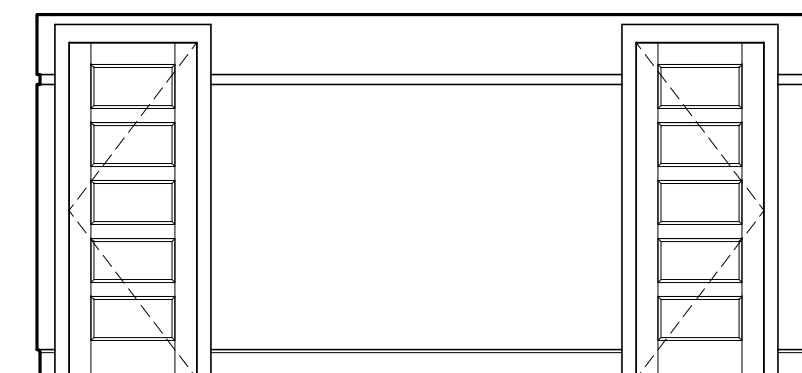
7 INTERIOR ELEVATION UNIT 117
1/4"=1'-0"



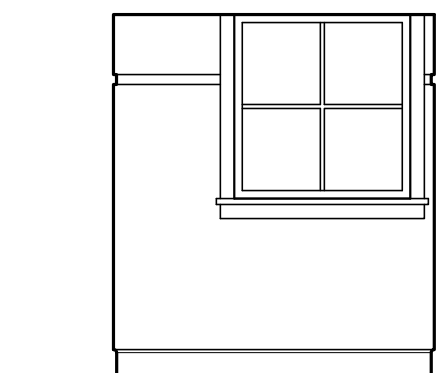
8 INTERIOR ELEVATION UNIT 117
1/4"=1'-0"



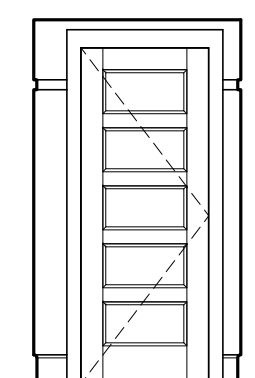
9 INTERIOR ELEVATION UNIT 117
1/4"=1'-0"



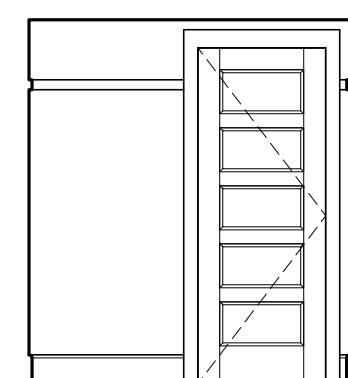
10 INTERIOR ELEVATION UNIT 117
1/4"=1'-0"



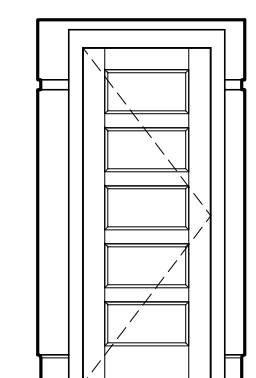
11 INTERIOR ELEVATION UNIT 117
1/4"=1'-0"



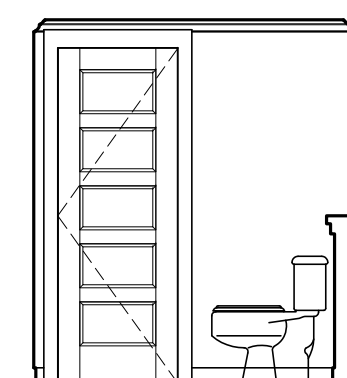
12 INTERIOR ELEVATION UNIT 117
1/4"=1'-0"



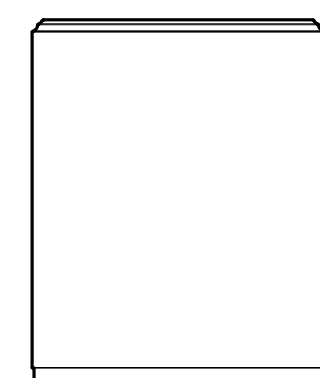
13 INTERIOR ELEVATION UNIT 117
1/4"=1'-0"



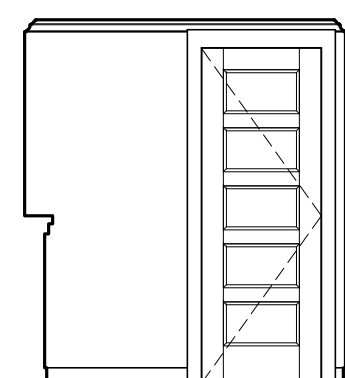
14 INT. ELEV. UNIT 117
1/4"=1'-0"



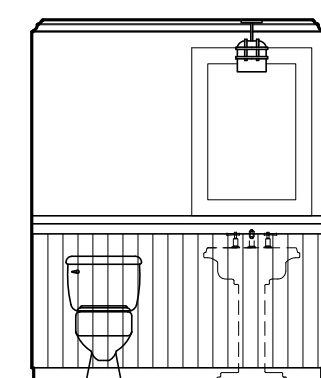
15 INT. ELEV. UNIT 117
1/4"=1'-0"



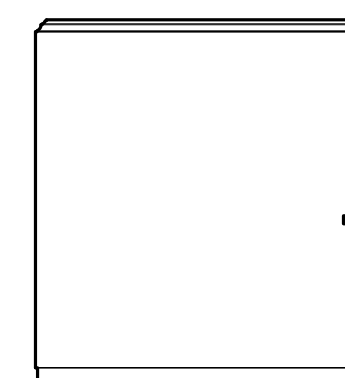
16 INT. ELEV. UNIT 117
1/4"=1'-0"



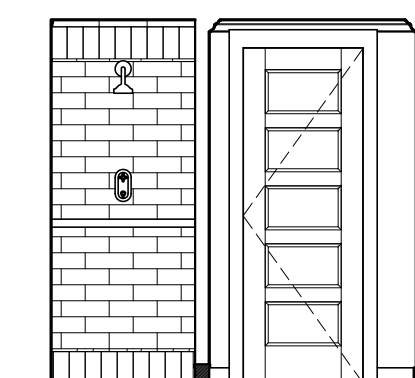
17 INT. ELEV. UNIT 117
1/4"=1'-0"



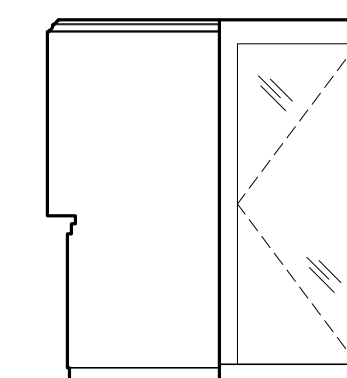
18 INTERIOR ELEVATION UNIT 117
1/4"=1'-0"



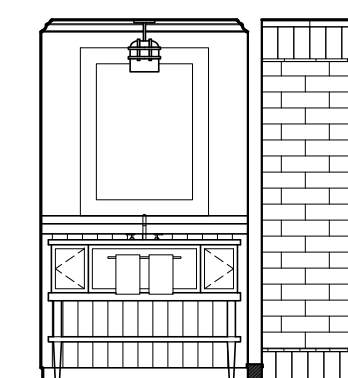
19 INTERIOR ELEVATION UNIT 117
1/4"=1'-0"



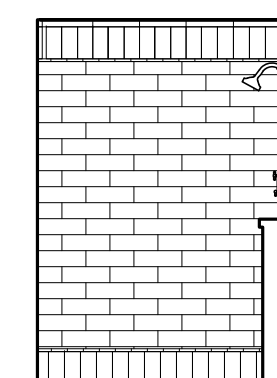
20 INTERIOR ELEVATION UNIT 117
1/4"=1'-0"



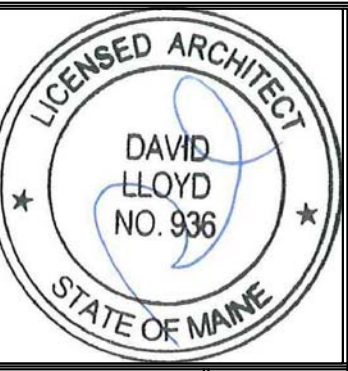
21 INTERIOR ELEVATION UNIT 117
1/4"=1'-0"



22 INTERIOR ELEVATION UNIT 117
1/4"=1'-0"



23 INTERIOR ELEVATION UNIT 117
1/4"=1'-0"



Prepared For:
**The Inn at Diamond
 Cove, LLC.**
 PO BOX 3572
 PORTLAND, ME 04101

Interior Designer:
truexculins
 INTERIORS
 208 BATTERY STREET BURLINGTON, VERMONT 05401 USA
 Phone 802.656.2775 800.227.1076
 ARCHITECTURE | INTERIOR DESIGN | truexculins.com

Architect:
ARCHETYPE
 architects
 48 Union Wharf Portland, Maine 04101
 (207) 772-6022 Fax (207) 772-4056

Project:
**THE INN AT
 DIAMOND COVE,
 LLC**
 MCKINLEY COURT
 GREAT DIAMOND ISLAND, MAINE

Revisions:
 Issued for Construction 03 Feb 14

Date:
 03 Feb 2014

Scale:
 As Noted

**INTERIOR
 ELEVATIONS UNITS
 117**

A9.12