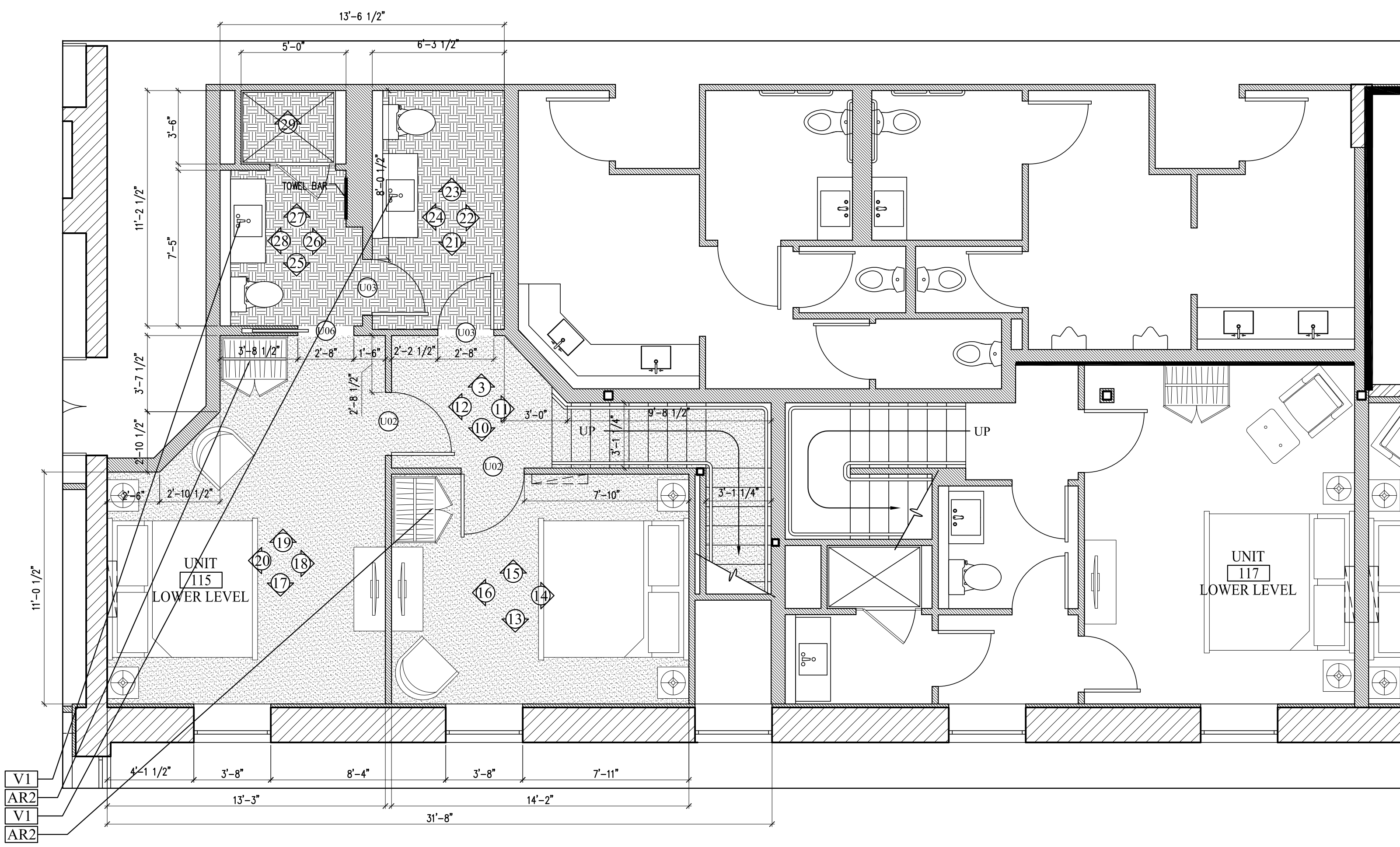
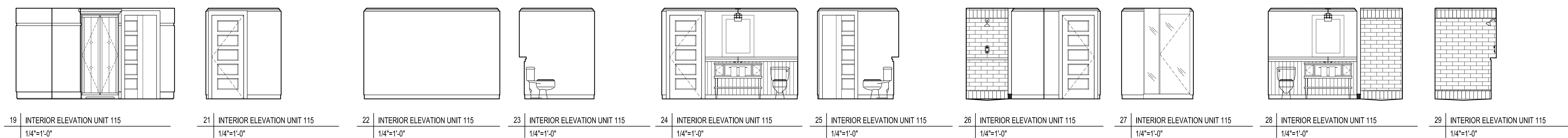


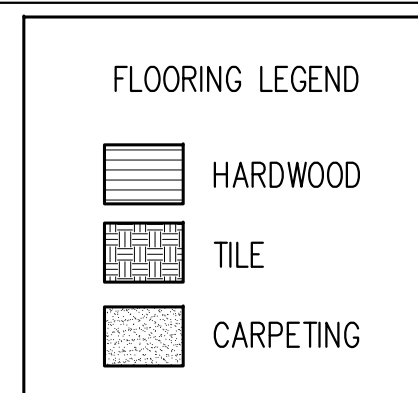
A ENLARGED FLOOR PLAN UNIT 115 FIRST FLOOR  
1/4"=1'-0"



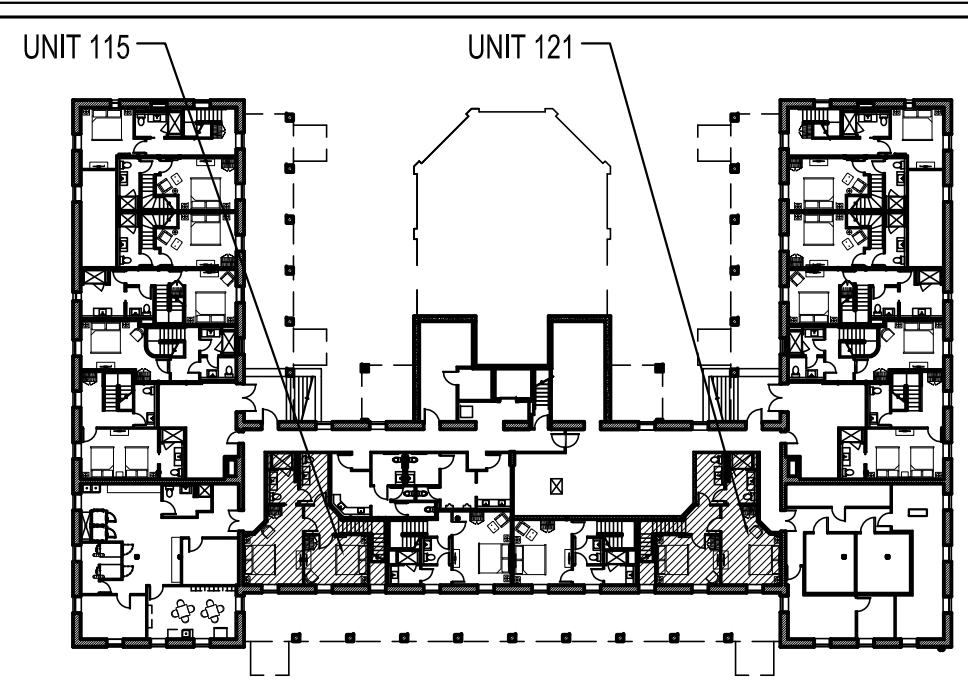
B ENLARGED FLOOR PLAN UNIT 115 BASEMENT  
1/4"=1'-0"



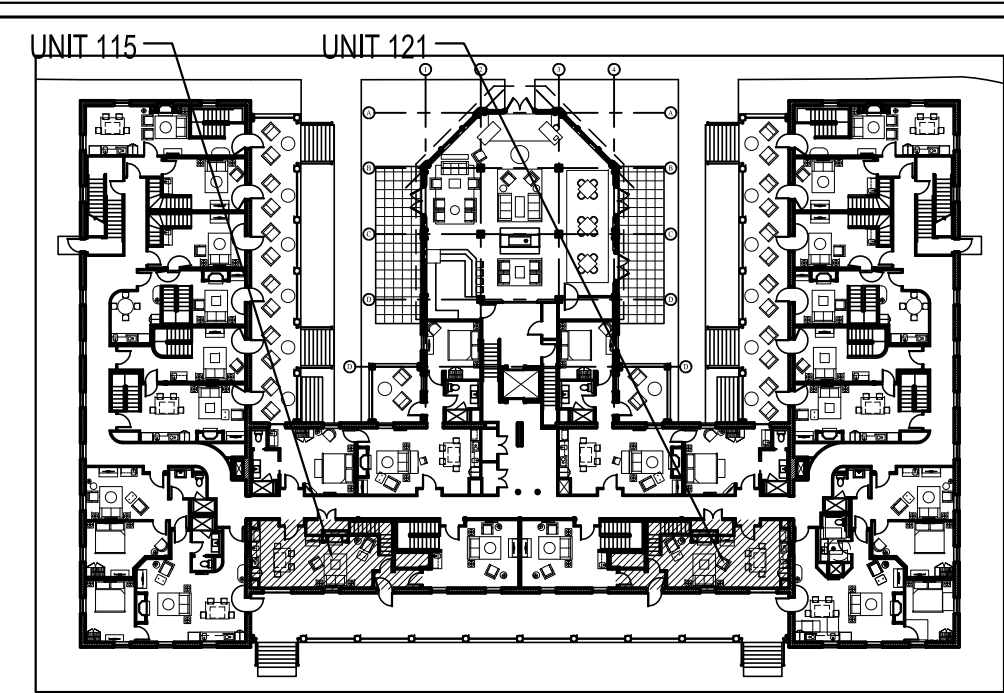
19 INTERIOR ELEVATION UNIT 115 1/4"=1'-0"  
21 INTERIOR ELEVATION UNIT 115 1/4"=1'-0"  
22 INTERIOR ELEVATION UNIT 115 1/4"=1'-0"  
23 INTERIOR ELEVATION UNIT 115 1/4"=1'-0"  
24 INTERIOR ELEVATION UNIT 115 1/4"=1'-0"  
25 INTERIOR ELEVATION UNIT 115 1/4"=1'-0"  
26 INTERIOR ELEVATION UNIT 115 1/4"=1'-0"  
27 INTERIOR ELEVATION UNIT 115 1/4"=1'-0"  
28 INTERIOR ELEVATION UNIT 115 1/4"=1'-0"  
29 INTERIOR ELEVATION UNIT 115 1/4"=1'-0"



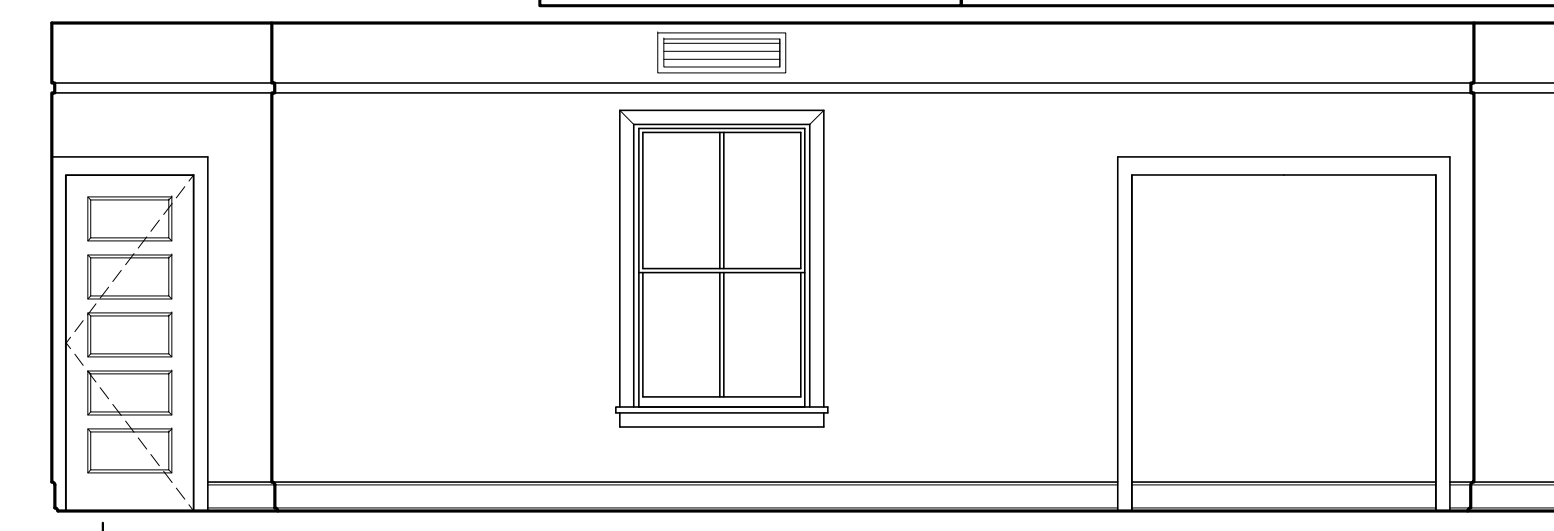
NOTES-  
-UNIT 115 SHOWN- 121 IS MIRRORRED  
-REFER TO 7.02, 9.00, 9.00A AND 9.00B FOR MILLWORK DETAILS



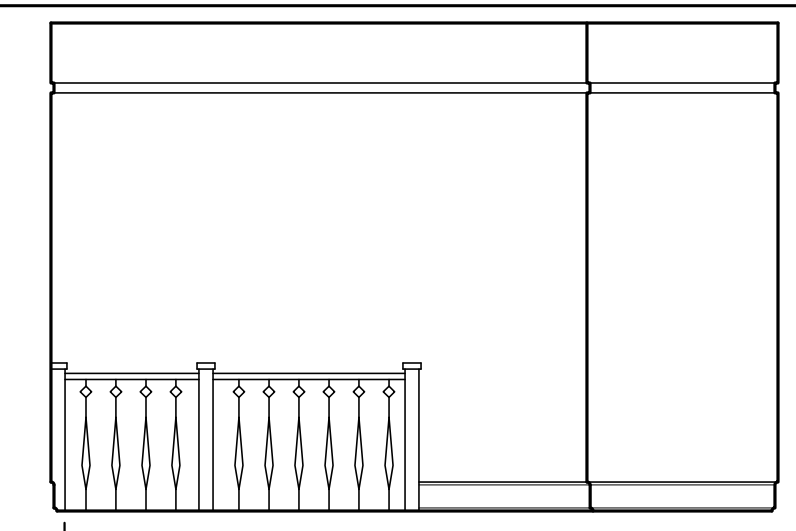
BASEMENT KEY PLAN- NTS



FIRST FLOOR KEY PLAN- NTS



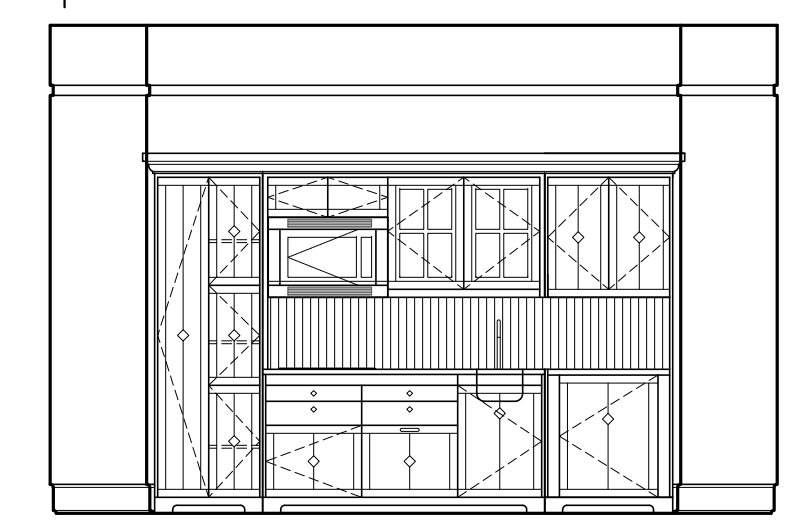
1 INTERIOR ELEVATION UNIT 115  
1/4"=1'-0"



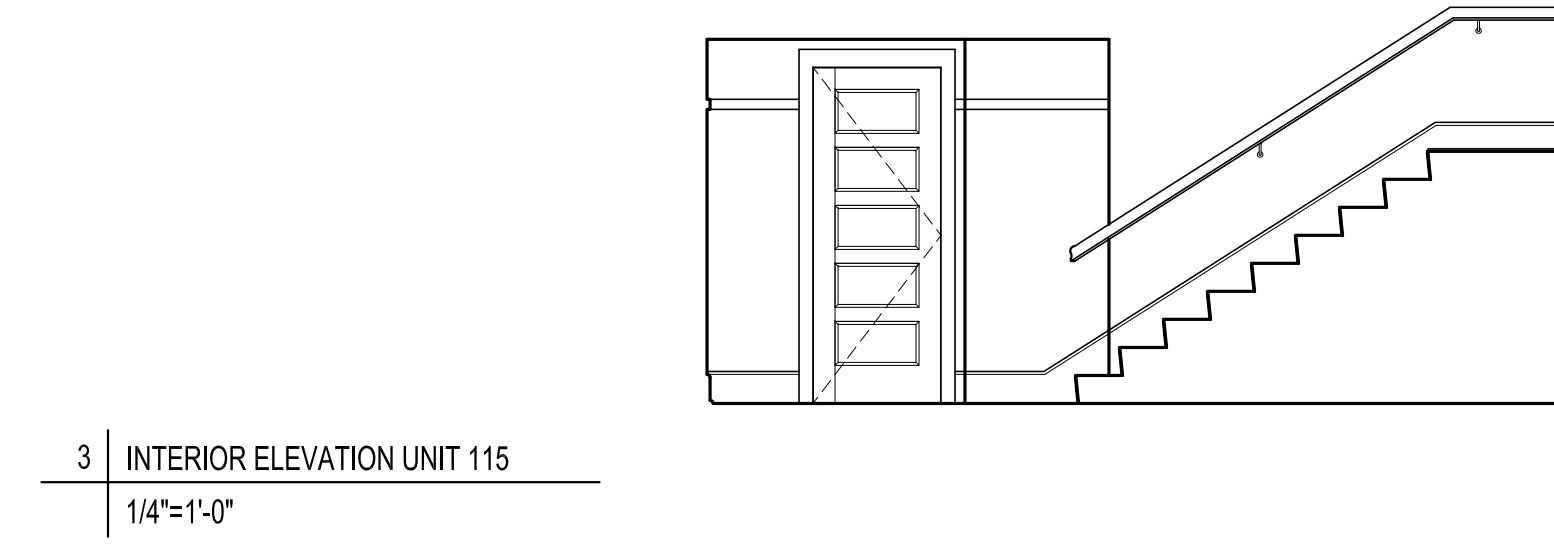
2 INTERIOR ELEVATION UNIT 115  
1/4"=1'-0"



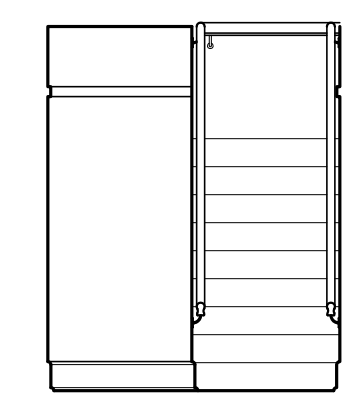
3 INTERIOR ELEVATION UNIT 115  
1/4"=1'-0"



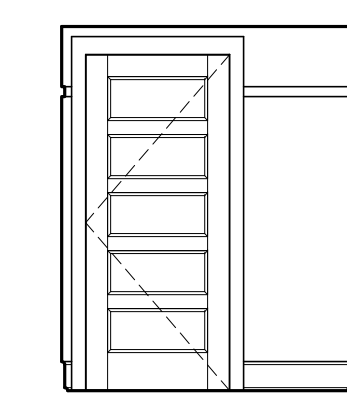
4 INTERIOR ELEVATION UNIT 106A  
1/4"=1'-0"



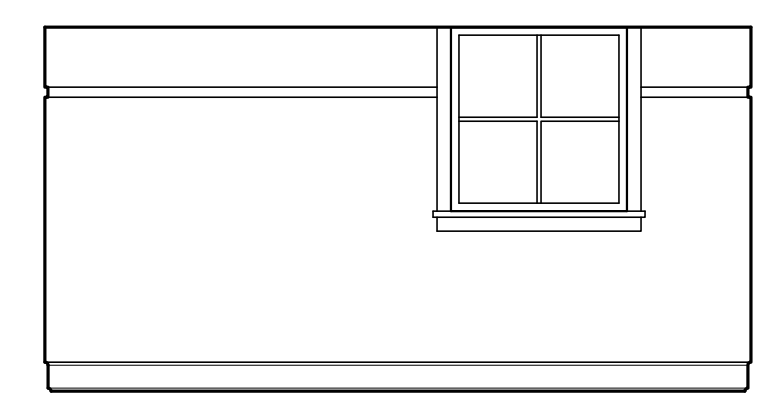
10 INTERIOR ELEVATION UNIT 115  
1/4"=1'-0"



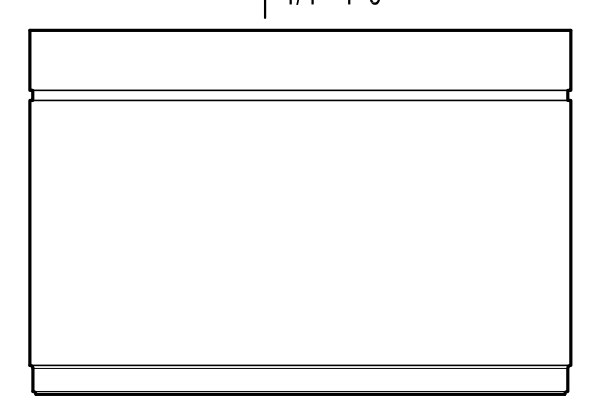
11 INT. ELEV. UNIT 115  
1/4"=1'-0"



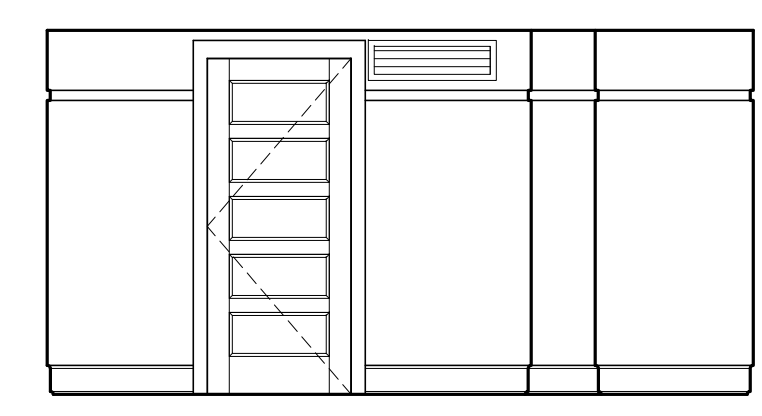
12 INT. ELEV. UNIT 115  
1/4"=1'-0"



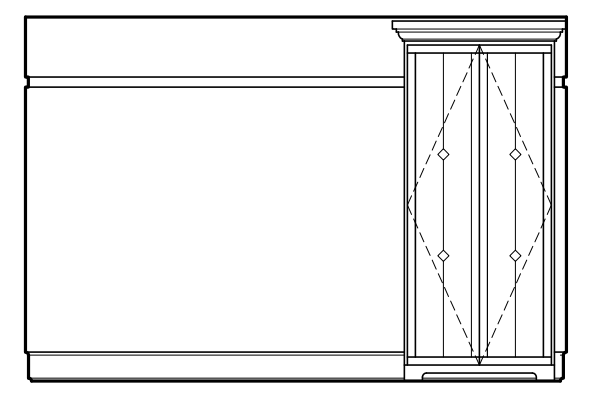
13 INTERIOR ELEVATION UNIT 115  
1/4"=1'-0"



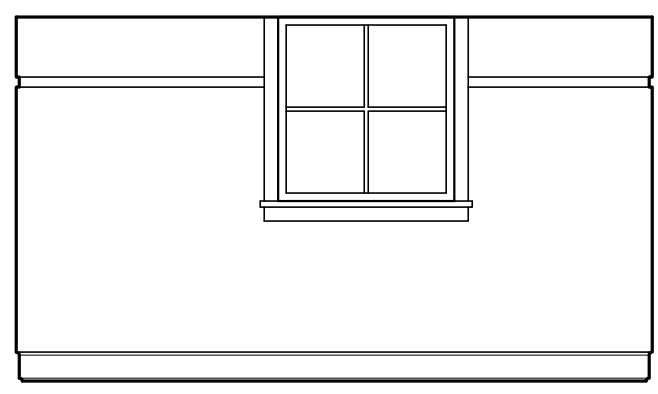
14 INTERIOR ELEVATION UNIT 115  
1/4"=1'-0"



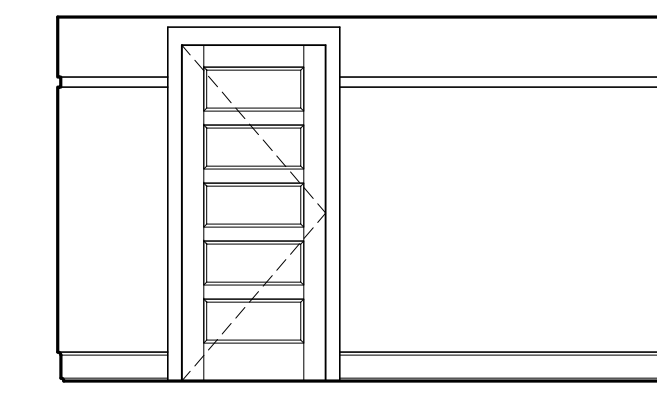
15 INTERIOR ELEVATION UNIT 115  
1/4"=1'-0"



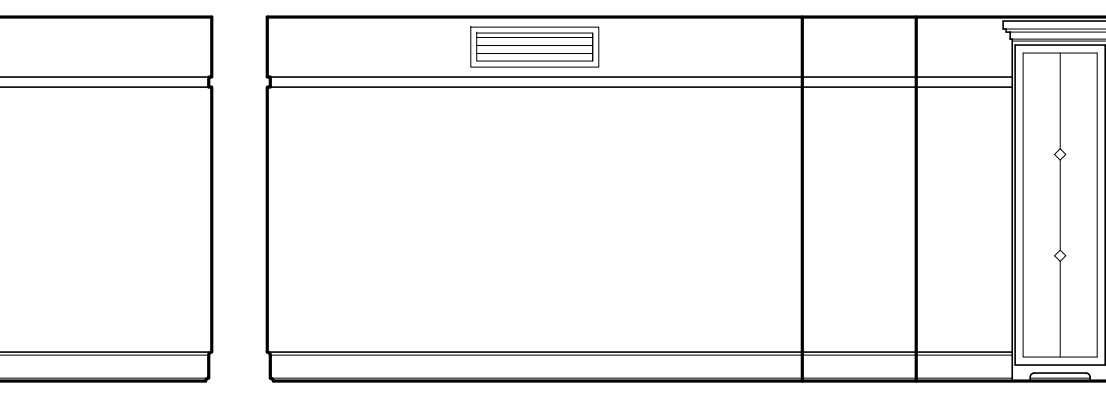
16 INTERIOR ELEVATION UNIT 115  
1/4"=1'-0"



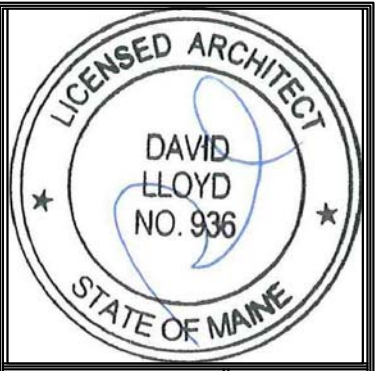
17 INTERIOR ELEVATION UNIT 115  
1/4"=1'-0"



18 INTERIOR ELEVATION UNIT 115  
1/4"=1'-0"



20 INTERIOR ELEVATION UNIT 115  
1/4"=1'-0"



Prepared For:  
**The Inn at Diamond Cove, LLC.**  
PO BOX 3572  
PORTLAND, ME 04101

Interior Designer:  
**truexculins**  
INTERIORS  
289 BATTERY STREET BURLINGTON, VERMONT 05401 USA  
Phone 802.658.2775 800.227.1076  
ARCHITECTURE | INTERIOR DESIGN | truexculins.com

Architect:  
**ARCHETYPE**  
architects  
48 Union Wharf Portland, Maine 04101  
(207) 772-6022 Fax (207) 772-4056

Project:  
**THE INN AT  
DIAMOND COVE,  
LLC**  
McKINLEY COURT  
GREAT DIAMOND ISLAND, MAINE

Revisions:  
Issued for Construction 03 Feb 14

Date:  
03 Feb 2014  
Scale:  
As Noted  
**INTERIOR  
ELEVATIONS UNITS  
115, 121**

**A9.11**