

Prepared For:
The Inn at Diamond Cove, LLC.
 PO BOX 3572
 PORTLAND, ME 04101

Interior Designer:
truexculins
 INTERIORS
 289 BATTERY STREET BURLINGTON, VERMONT 05401 USA
 Phone 802.656.2775 800.227.1076
 ARCHITECTURE | INTERIOR DESIGN | truexculins.com

Architect:
ARCHETYPE
 architects
 48 Union Wharf Portland, Maine 04101
 (207) 772-6022 Fax (207) 772-4056

Project:
**THE INN AT
 DIAMOND COVE,
 LLC**
 MCKINLEY COURT
 GREAT DIAMOND ISLAND, MAINE

Revisions:
 Issued for Construction 03 Feb 14

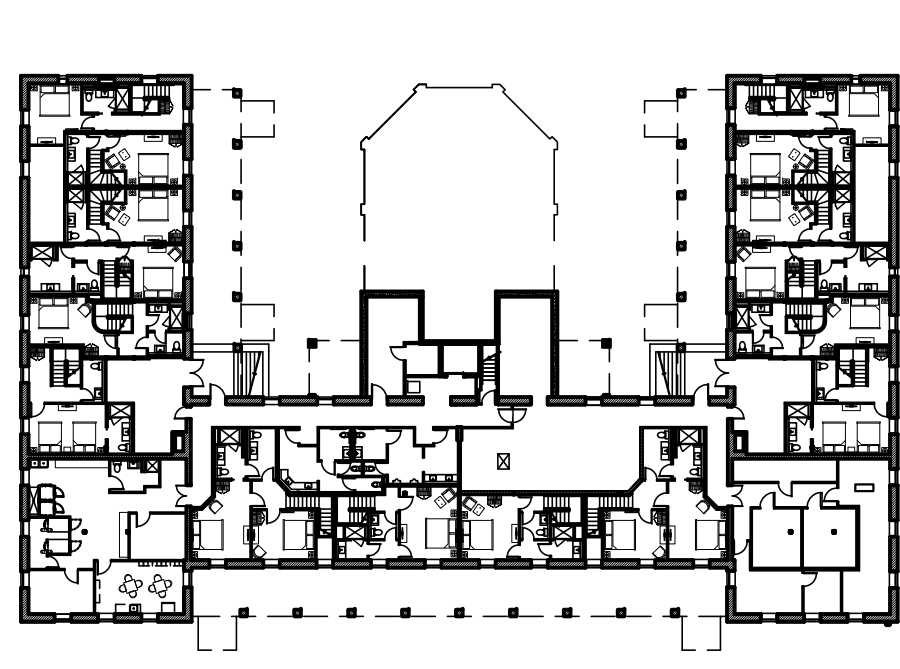
Date: 03 Feb 2014
 Scale: As Noted
**INTERIOR
 ELEVATIONS UNIT
 120**

A9.09A

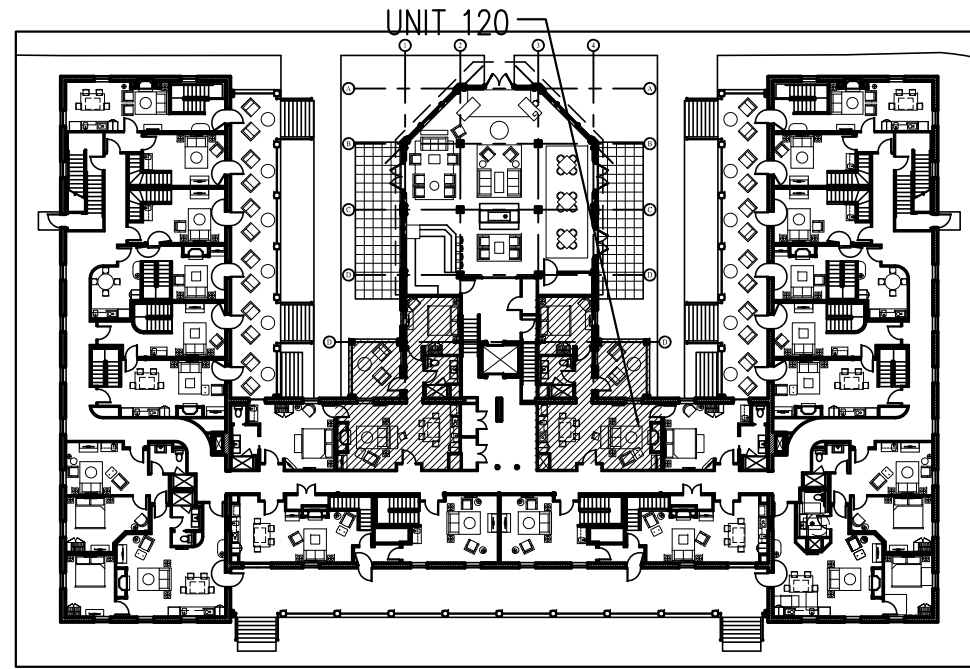
FLOORING LEGEND

	HARDWOOD
	TILE
	CARPETING

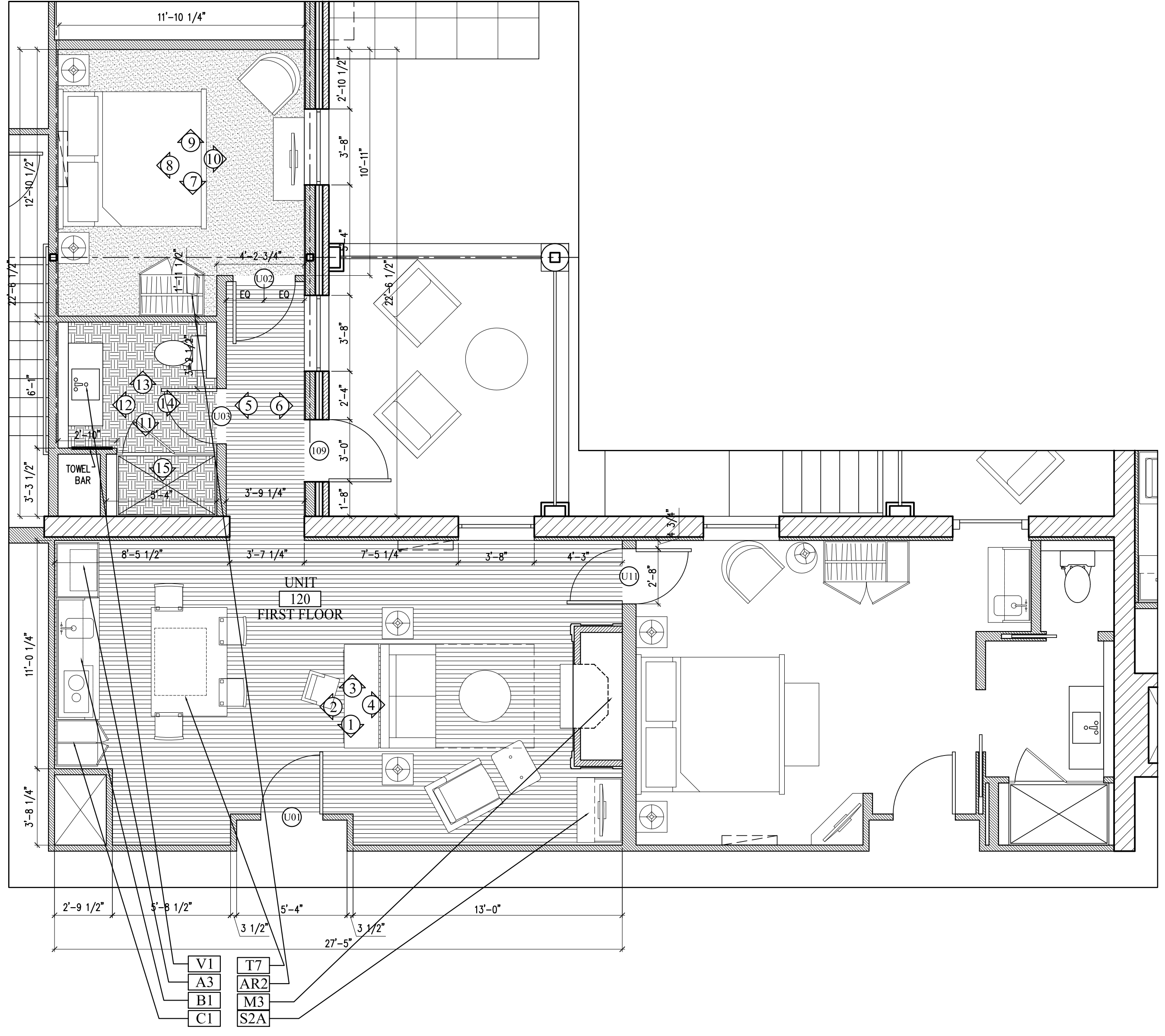
NOTES—
 —REFER TO 7.02, 9.00,
 9.00A AND 9.00B FOR
 MILLWORK DETAILS



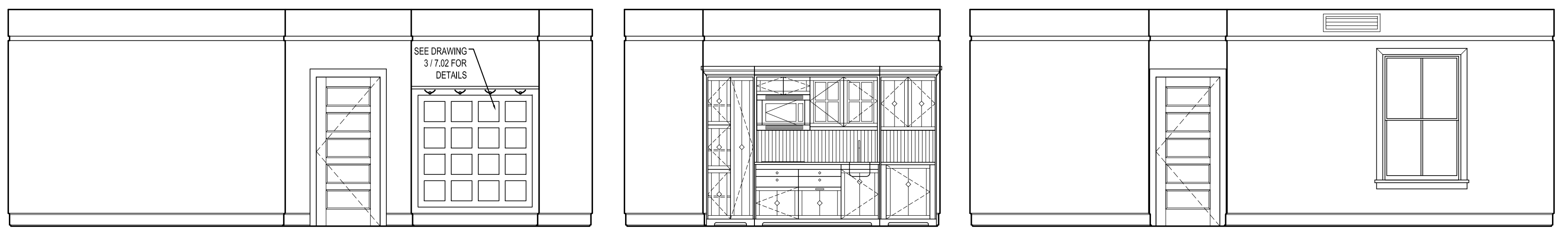
BASEMENT KEY PLAN- NTS



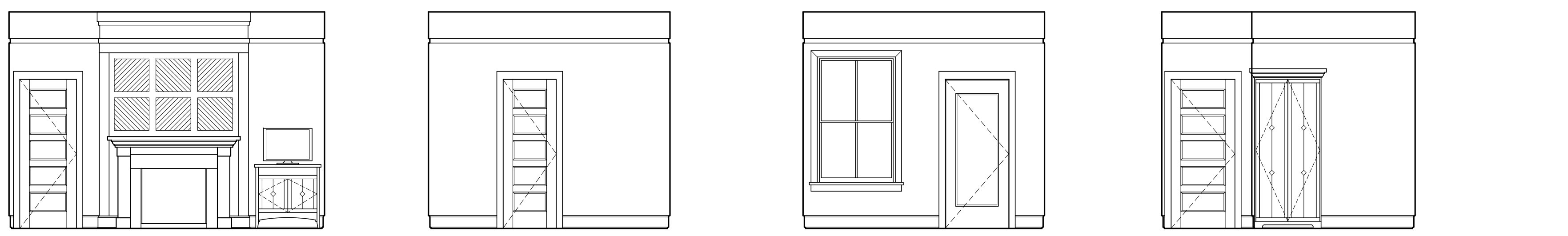
FIRST FLOOR KEY PLAN- NTS



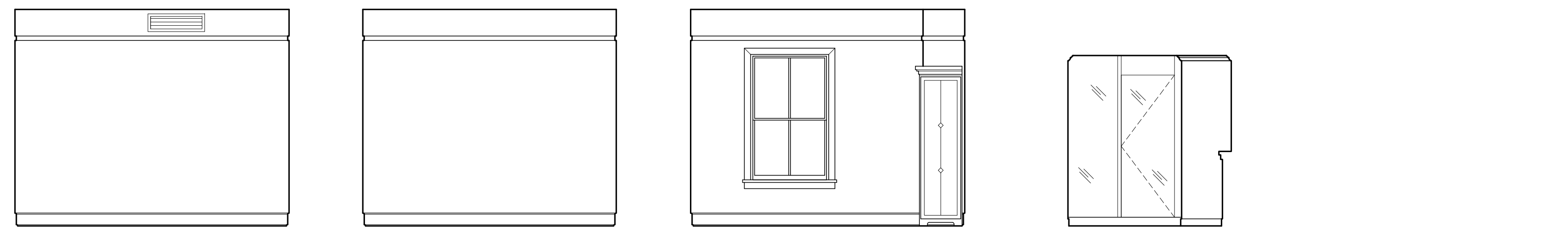
A ENLARGED FLOOR PLAN UNIT 120 FIRST FLOOR
 1/4"=1'-0"



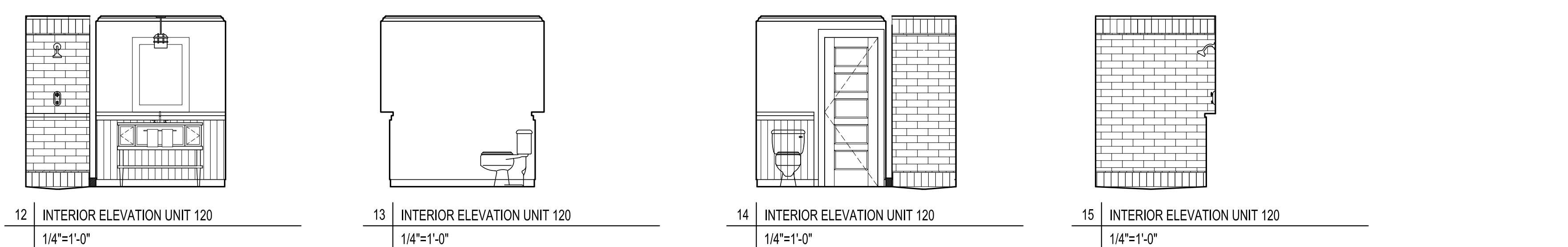
1 | INTERIOR ELEVATION UNIT 120 | 1/4"=1'-0"
 2 | INTERIOR ELEVATION UNIT 120 | 1/4"=1'-0"
 3 | INTERIOR ELEVATION UNIT 120 | 1/4"=1'-0"



4 | INTERIOR ELEVATION UNIT 120 | 1/4"=1'-0"
 5 | INTERIOR ELEVATION UNIT 120 | 1/4"=1'-0"
 6 | INTERIOR ELEVATION UNIT 120 | 1/4"=1'-0"
 7 | INTERIOR ELEVATION UNIT 120 | 1/4"=1'-0"



8 | INTERIOR ELEVATION UNIT 120 | 1/4"=1'-0"
 9 | INTERIOR ELEVATION UNIT 120 | 1/4"=1'-0"
 10 | INTERIOR ELEVATION UNIT 120 | 1/4"=1'-0"
 11 | INTERIOR ELEVATION UNIT 120 | 1/4"=1'-0"



12 | INTERIOR ELEVATION UNIT 120 | 1/4"=1'-0"
 13 | INTERIOR ELEVATION UNIT 120 | 1/4"=1'-0"
 14 | INTERIOR ELEVATION UNIT 120 | 1/4"=1'-0"
 15 | INTERIOR ELEVATION UNIT 120 | 1/4"=1'-0"