

Prepared For:
The Inn at Diamond Cove, LLC.
 PO BOX 3572
 PORTLAND, ME 04101

Interior Designer:
truexculins
 INTERIORS
 289 BATTERY STREET BURLINGTON, VERMONT 05401 USA
 Phone 802.656.2775 800.227.1076
 ARCHITECTURE | INTERIOR DESIGN | truexculins.com

Architect:
ARCHETYPE
 architects
 48 Union Wharf Portland, Maine 04101
 (207) 772-6022 Fax (207) 772-4056

Project:
**THE INN AT
 DIAMOND COVE,
 LLC**
 MCKINLEY COURT
 GREAT DIAMOND ISLAND, MAINE

Revisions:
 Issued for Construction 03 Feb 14

Date: 03 Feb 2014
 Scale: As Noted
**INTERIOR
 ELEVATIONS UNITS
 116**

A9.09

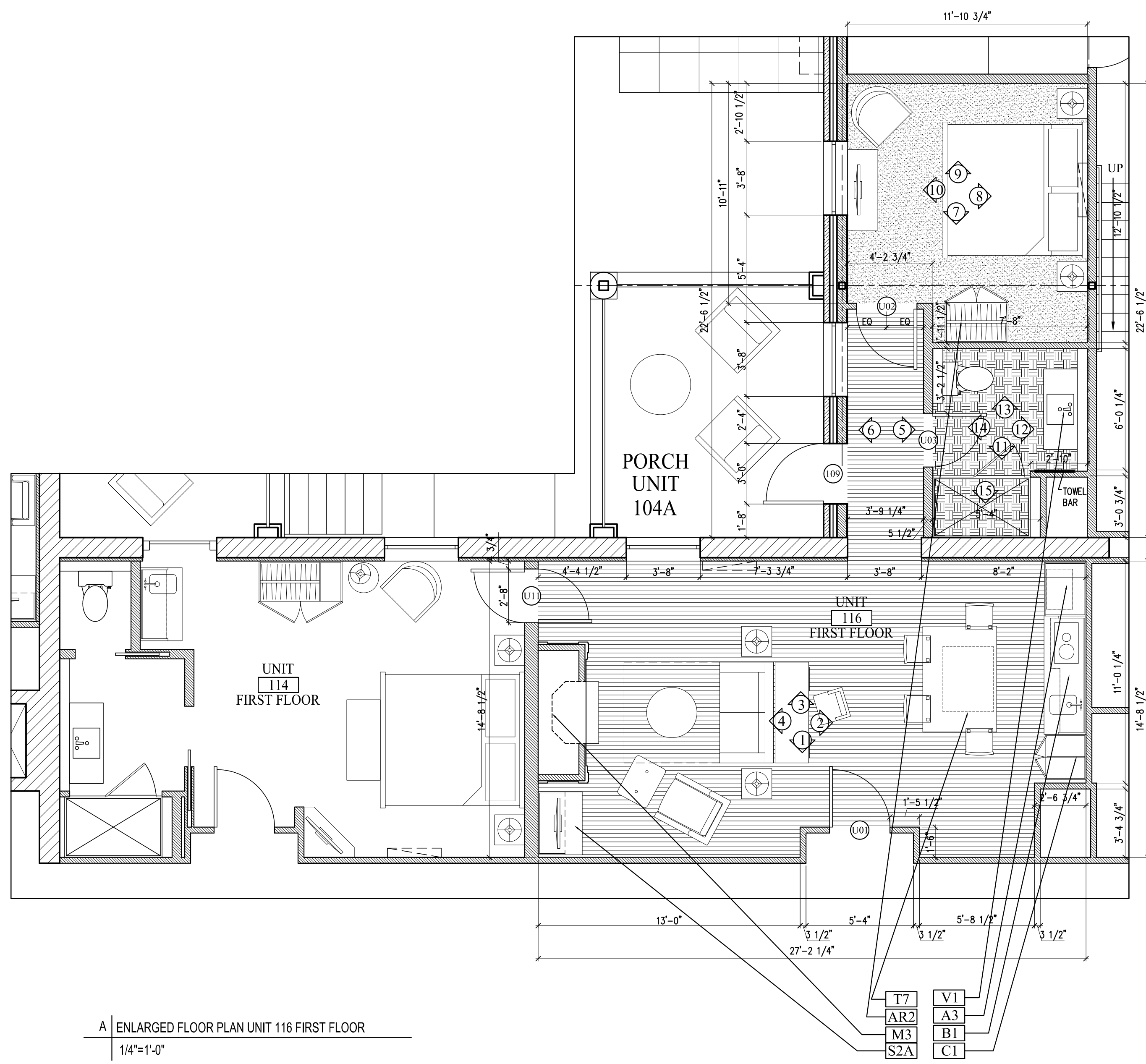
FLOORING LEGEND

- HARDWOOD
- TILE
- CARPETING

NOTES--
 --REFER TO 7.02, 9.00,
 9.00A AND 9.00B FOR
 MILLWORK DETAILS

BASEMENT KEY PLAN- NTS

FIRST FLOOR KEY PLAN- NTS



1 | INTERIOR ELEVATION UNIT 116
1/4"=1'-0"

4 | INTERIOR ELEVATION UNIT 116
1/4"=1'-0"

8 | INTERIOR ELEVATION UNIT 116
1/4"=1'-0"

12 | INTERIOR ELEVATION UNIT 116
1/4"=1'-0"

2 | INTERIOR ELEVATION UNIT 116
1/4"=1'-0"

5 | INTERIOR ELEVATION UNIT 116
1/4"=1'-0"

9 | INTERIOR ELEVATION UNIT 116
1/4"=1'-0"

13 | INTERIOR ELEVATION UNIT 116
1/4"=1'-0"

3 | INTERIOR ELEVATION UNIT 116
1/4"=1'-0"

6 | INTERIOR ELEVATION UNIT 116
1/4"=1'-0"

10 | INTERIOR ELEVATION UNIT 116
1/4"=1'-0"

14 | INTERIOR ELEVATION UNIT 116
1/4"=1'-0"

7 | INTERIOR ELEVATION UNIT 116
1/4"=1'-0"

11 | INTERIOR ELEVATION UNIT 116
1/4"=1'-0"

15 | INTERIOR ELEVATION UNIT 116
1/4"=1'-0"

A | ENLARGED FLOOR PLAN UNIT 116 FIRST FLOOR
 1/4"=1'-0"