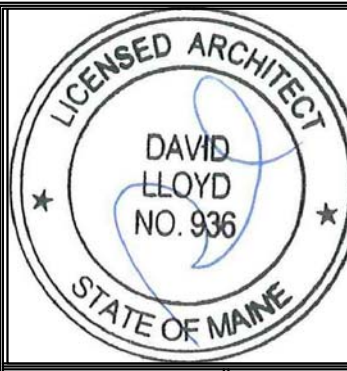
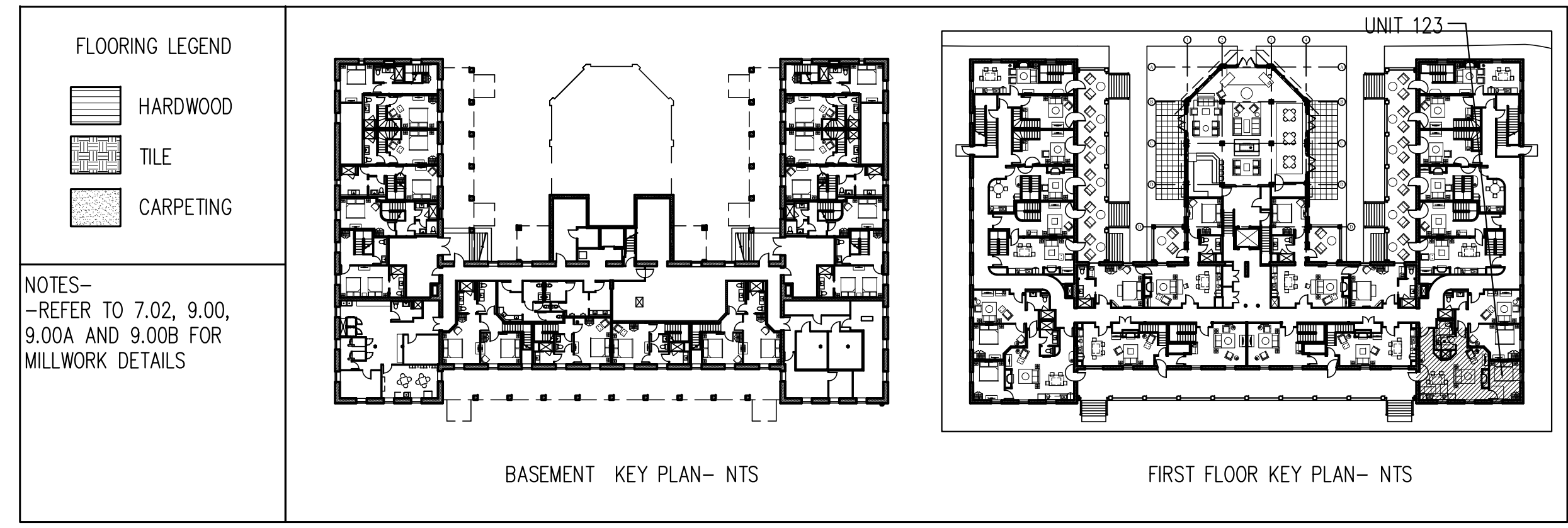


A | ENLARGED FLOOR PLAN UNIT 109A FIRST FLOOR
1/4"=1'-0"



Prepared For:
The Inn at Diamond Cove, LLC.
PO BOX 3572
PORTLAND, ME 04101

Interior Designer:
truexculins
INTERIORS
289 BATTERY STREET BURLINGTON, VERMONT 05401 USA
Phone 802.656.2775 800.227.1076
ARCHITECTURE | INTERIOR DESIGN | truexculins.com

Architect:
ARCHETYPE
architects
48 Union Wharf Portland, Maine 04101
(207) 772-6022 Fax (207) 772-4056

Project:
**THE INN AT
DIAMOND COVE,
LLC**
McKINLEY COURT
GREAT DIAMOND ISLAND, MAINE

Revisions:
Issued for Construction 03 Feb 14

Date: 03 Feb 2014
Scale: As Noted
**INTERIOR
ELEVATIONS UNITS
123**

A9.08A

