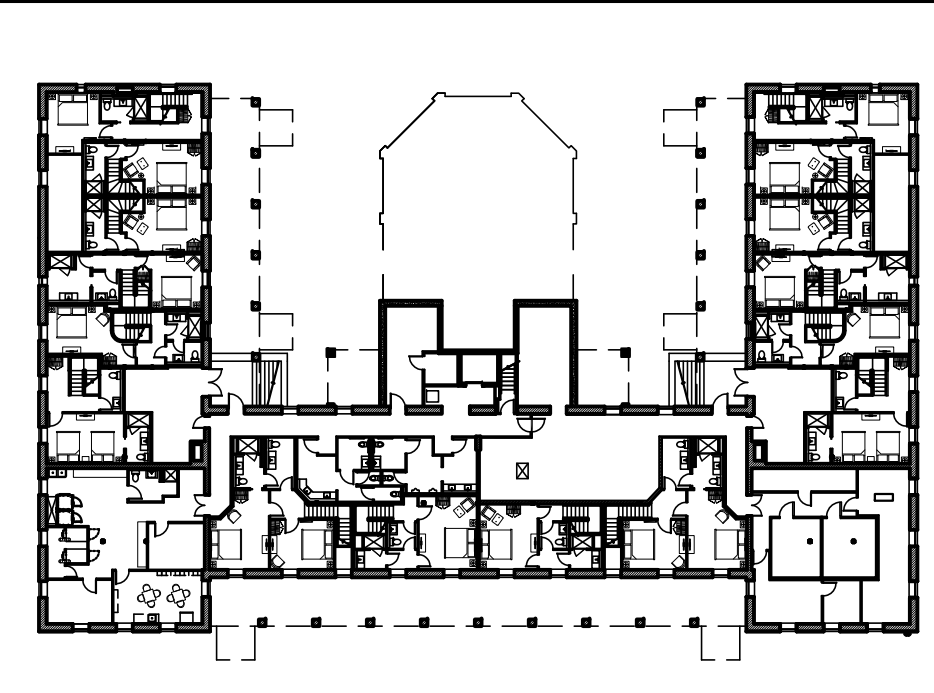


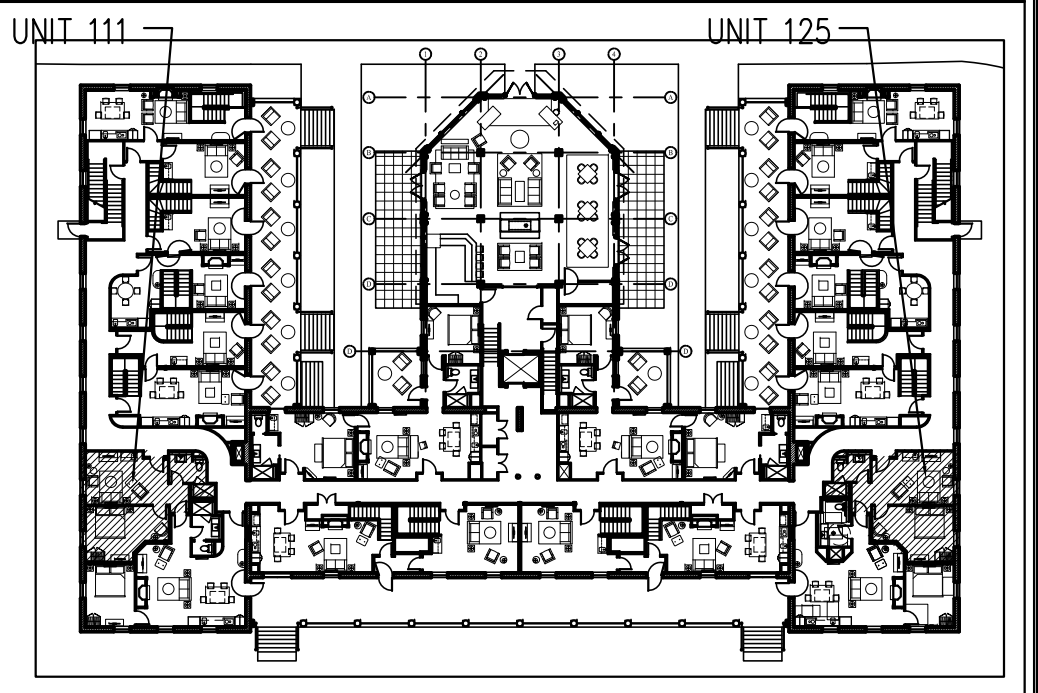
FLOORING LEGEND

	HARDWOOD
	TILE
	CARPETING

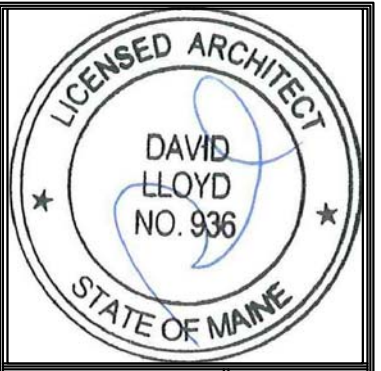
NOTES-
 -UNIT 111 SHOWN- 125 IS MIRRORED
 -REFER TO 7.02, 9.00, 9.00A AND 9.00B FOR MILLWORK DETAILS



BASEMENT KEY PLAN- NTS



FIRST FLOOR KEY PLAN- NTS



Prepared For:
The Inn at Diamond Cove, LLC.
 PO BOX 3572
 PORTLAND, ME 04101

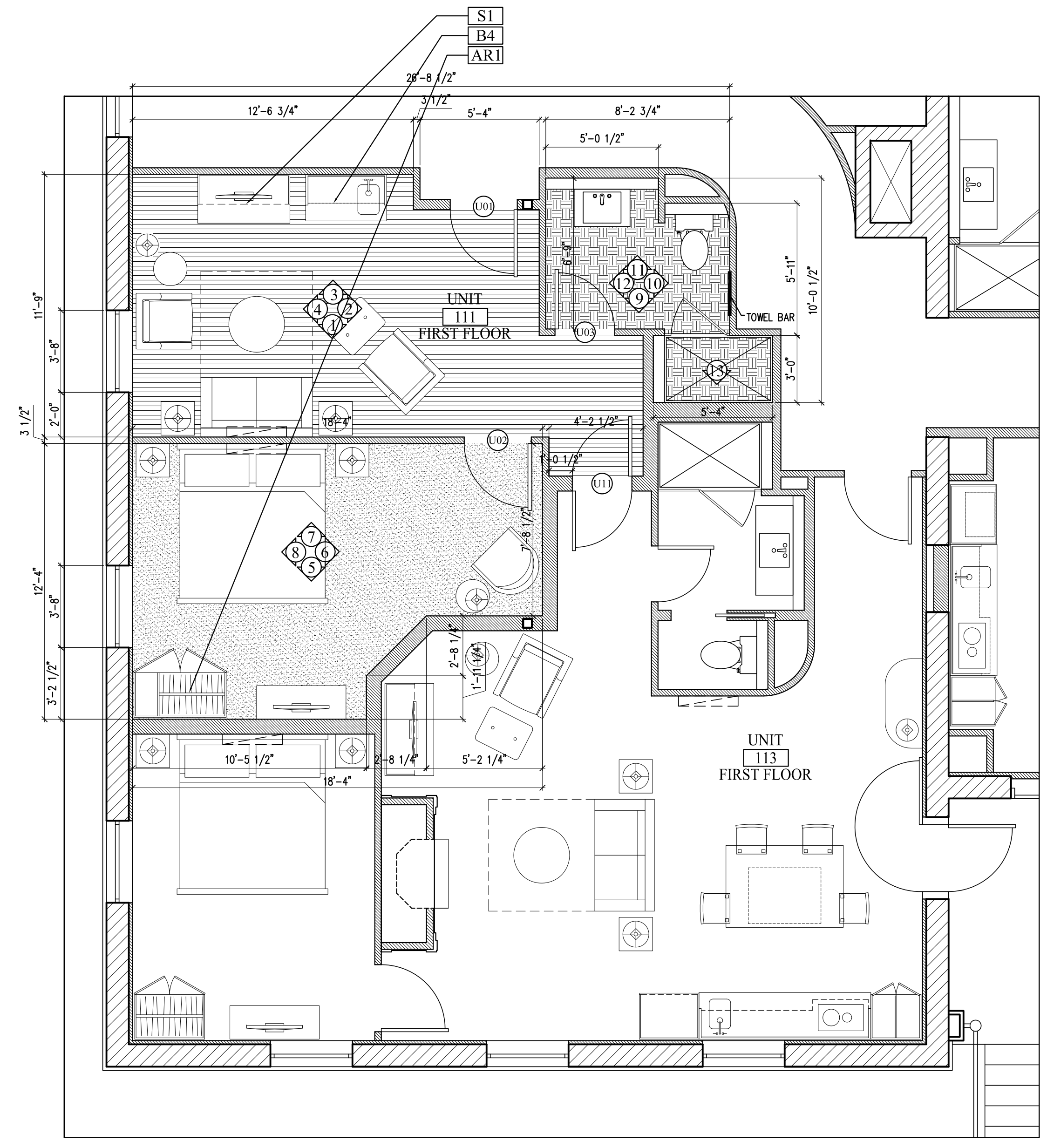
Interior Designer:
truexculins
 INTERIORS
 208 BATTERY STREET BURLINGTON, VERMONT 05401 USA
 Phone 802.656.2775 800.227.1076
 ARCHITECTURE | INTERIOR DESIGN | truexculins.com

Architect:
ARCHETYPE
 architects
 48 Union Wharf Portland, Maine 04101
 (207) 772-6022 Fax (207) 772-4056

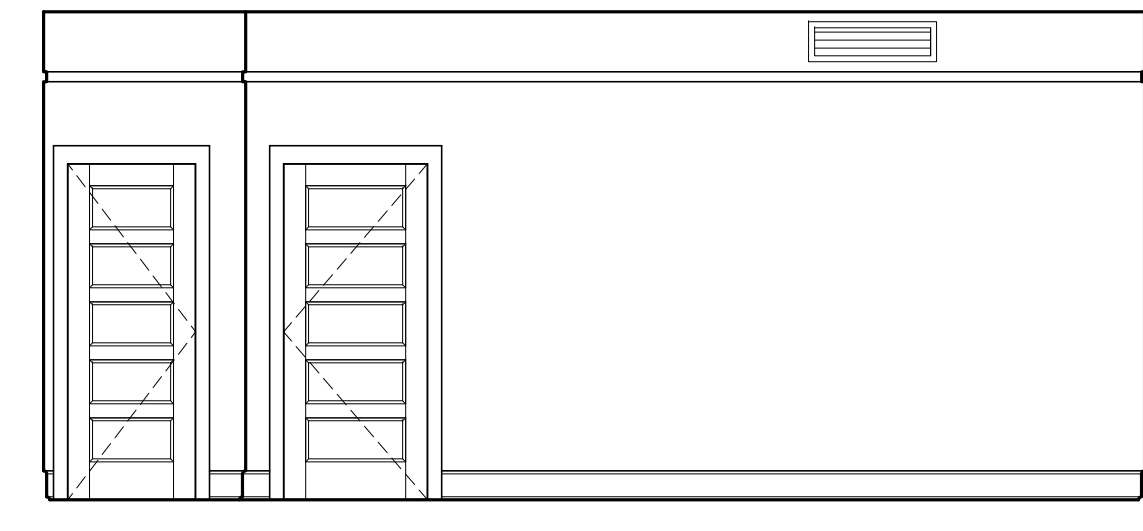
Project:
THE INN AT DIAMOND COVE, LLC
 McKINLEY COURT
 GREAT DIAMOND ISLAND, MAINE

Revisions:
 Issued for Construction 03 Feb 14

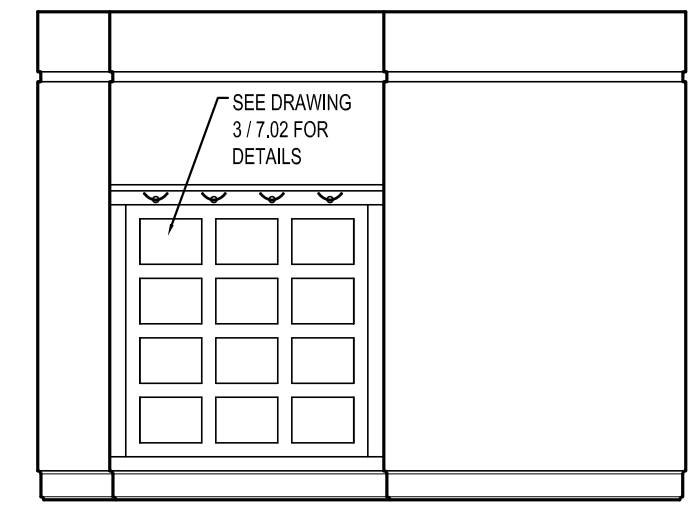
Date: 03 Feb 2014
 Scale: As Noted
INTERIOR ELEVATIONS UNITS 111, 125



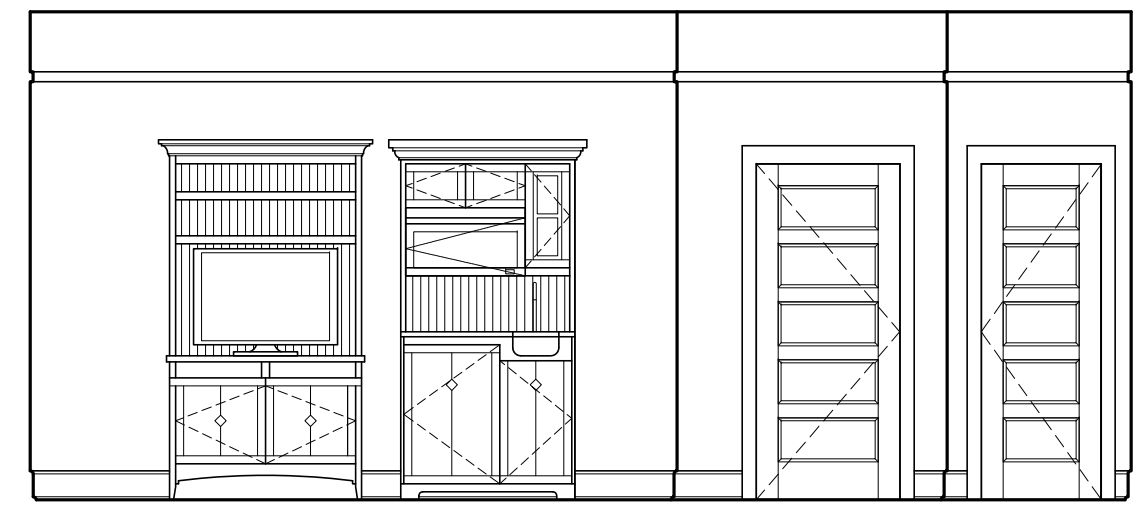
A ENLARGED FLOOR PLAN UNIT 111 FIRST FLOOR
 1/4"=1'-0"



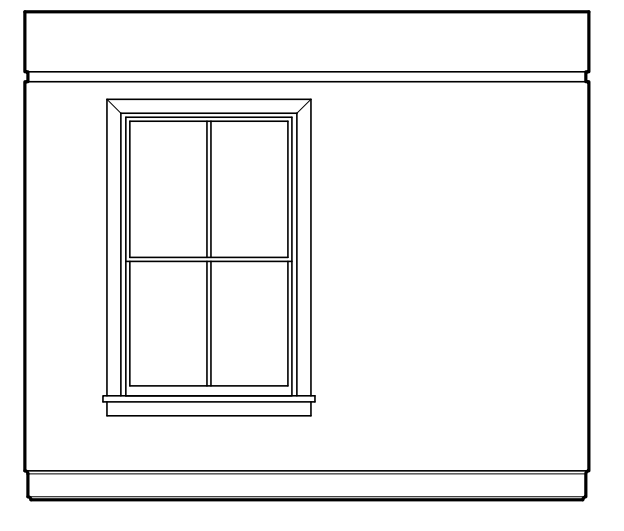
1 INTERIOR ELEVATION UNIT 111
 1/4"=1'-0"



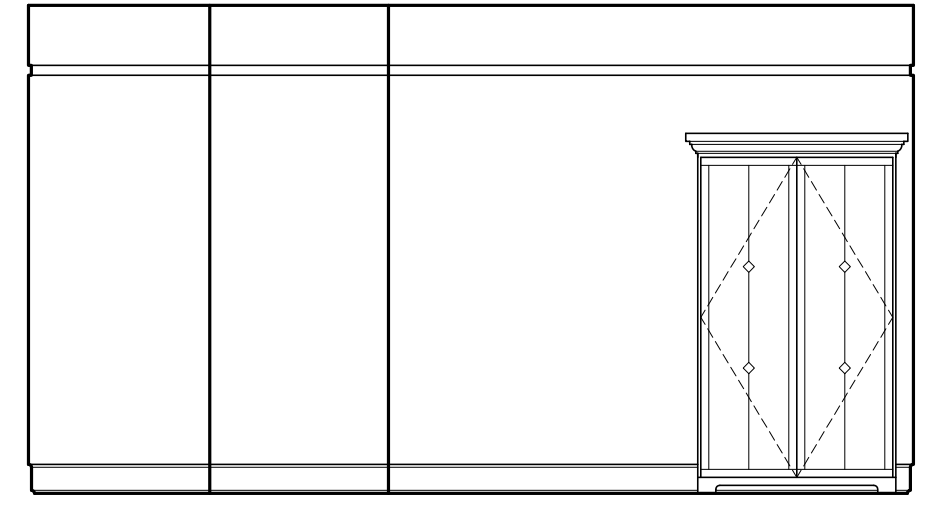
2 INTERIOR ELEVATION UNIT 111
 1/4"=1'-0"



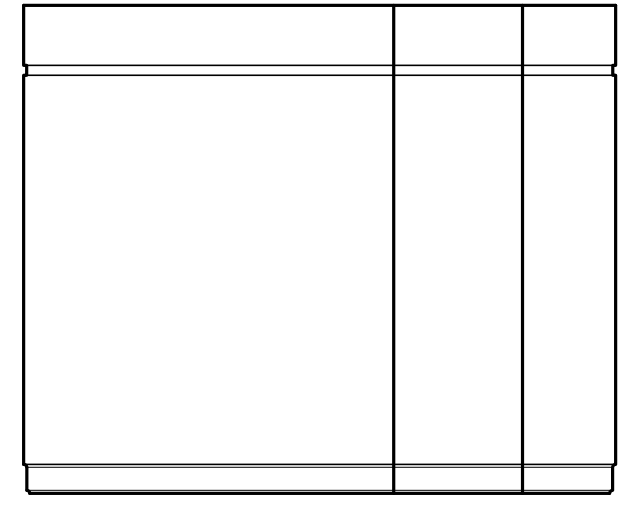
3 INTERIOR ELEVATION UNIT 111
 1/4"=1'-0"



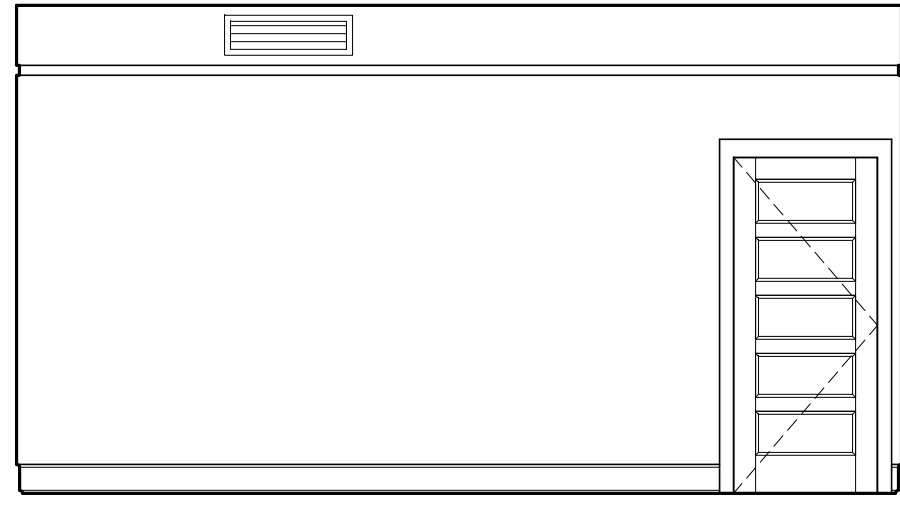
4 INTERIOR ELEVATION UNIT 111
 1/4"=1'-0"



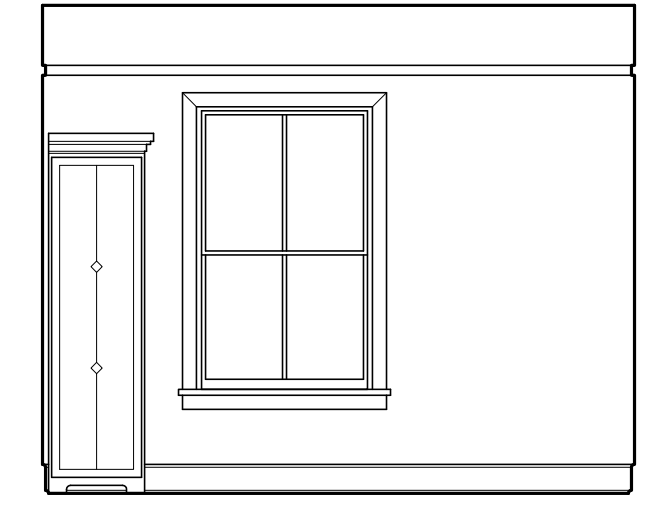
5 INTERIOR ELEVATION UNIT 111
 1/4"=1'-0"



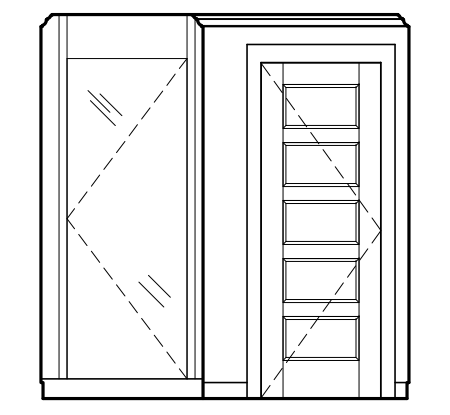
6 INTERIOR ELEVATION UNIT 111
 1/4"=1'-0"



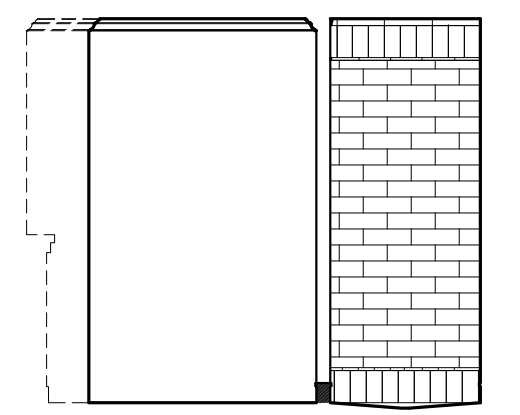
7 INTERIOR ELEVATION UNIT 111
 1/4"=1'-0"



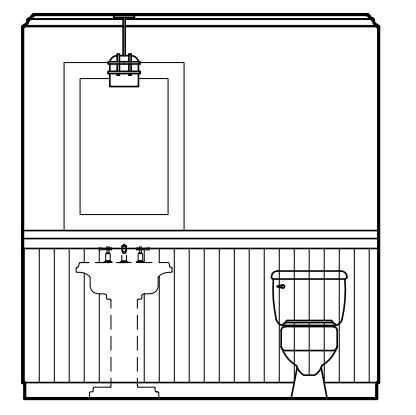
8 INTERIOR ELEVATION UNIT 111
 1/4"=1'-0"



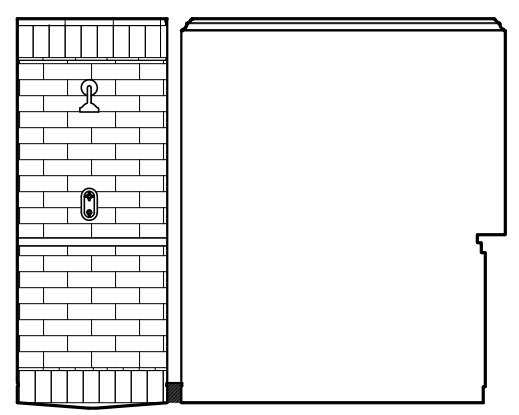
9 INTERIOR ELEVATION UNIT 111
 1/4"=1'-0"



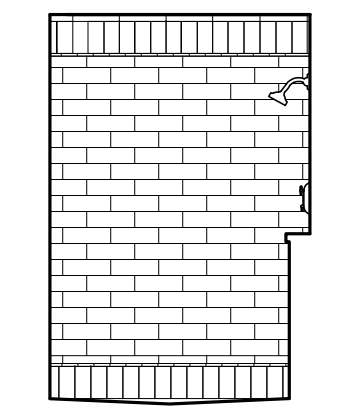
10 INTERIOR ELEVATION UNIT 111
 1/4"=1'-0"



11 INTERIOR ELEVATION UNIT 111
 1/4"=1'-0"



12 INTERIOR ELEVATION UNIT 111
 1/4"=1'-0"



13 INTERIOR ELEVATION UNIT 111
 1/4"=1'-0"