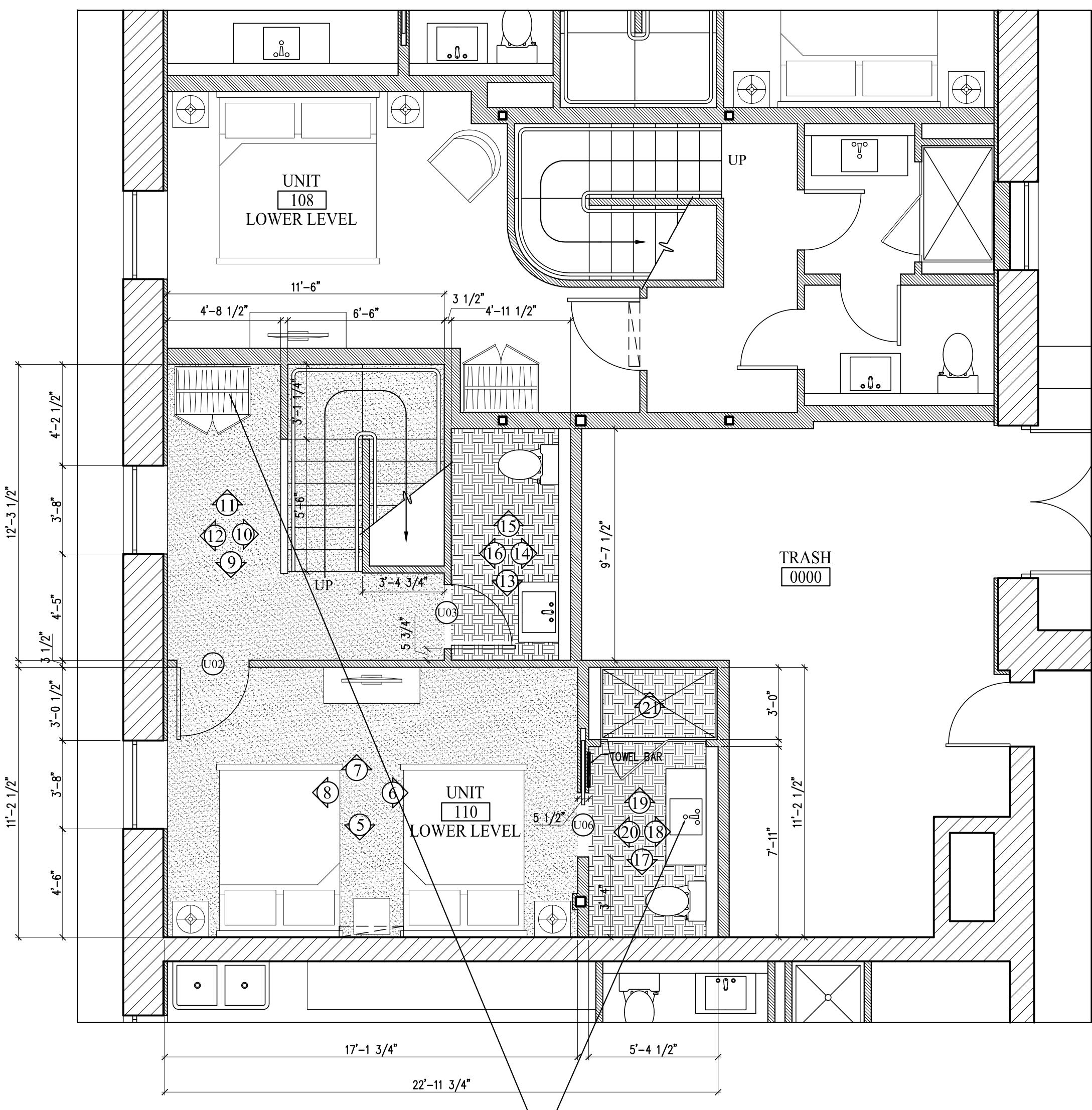


A ENLARGED FLOOR PLAN UNIT 110 FIRST FLOOR  
1/4"=1'-0"

- S1
- M-2
- T7
- C1
- B1
- A3

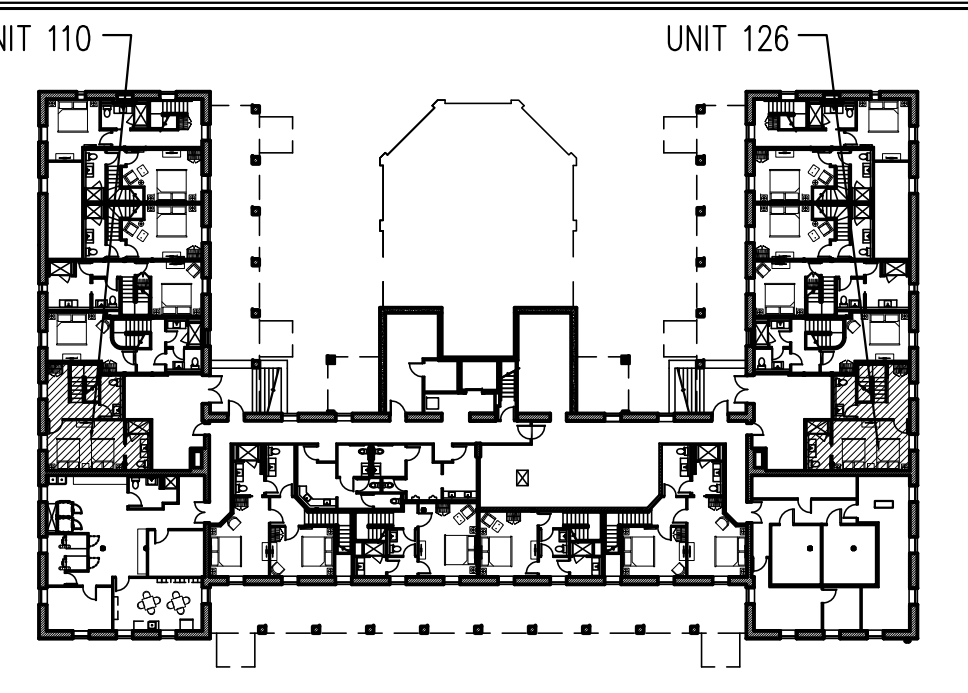


B ENLARGED FLOOR PLAN UNIT 110 BASEMENT  
1/4"=1'-0"

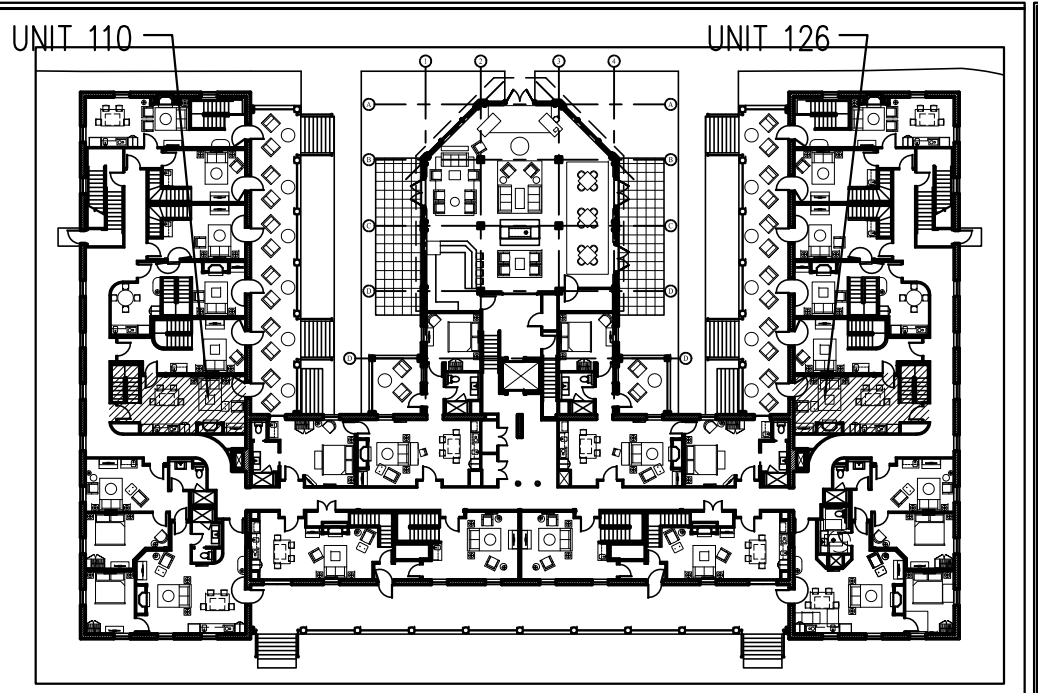
- V1
- AR2

FLOORING LEGEND  
 HARDWOOD  
 TILE  
 CARPETING

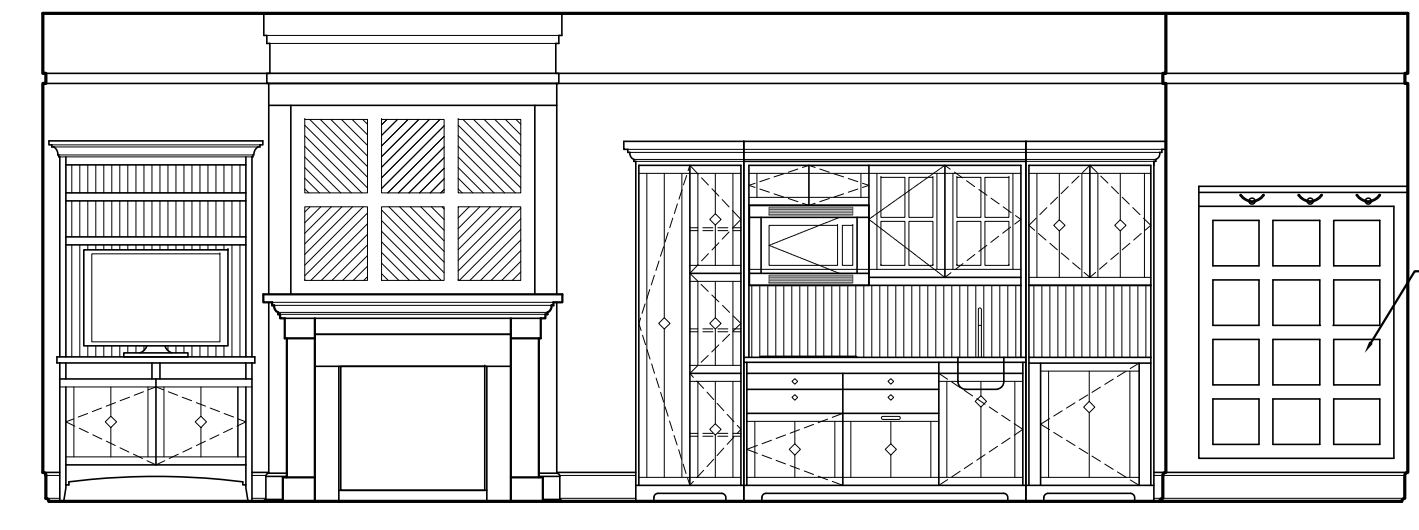
NOTES-  
 -UNIT 110 SHOWN- 126 IS MIRRORRED  
 -REFER TO 7.02, 9.00, 9.00A AND 9.00B FOR MILLWORK DETAILS



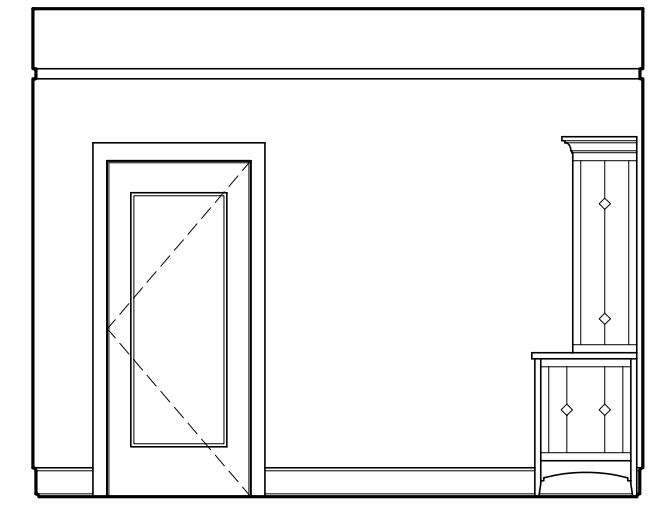
BASEMENT KEY PLAN- NTS



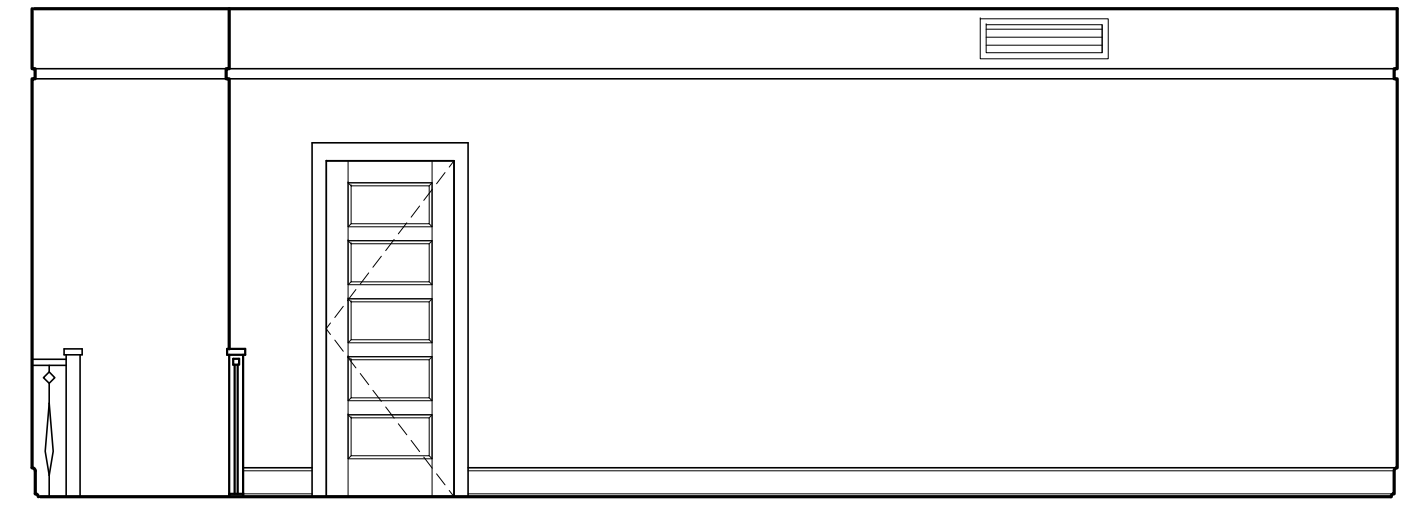
FIRST FLOOR KEY PLAN- NTS



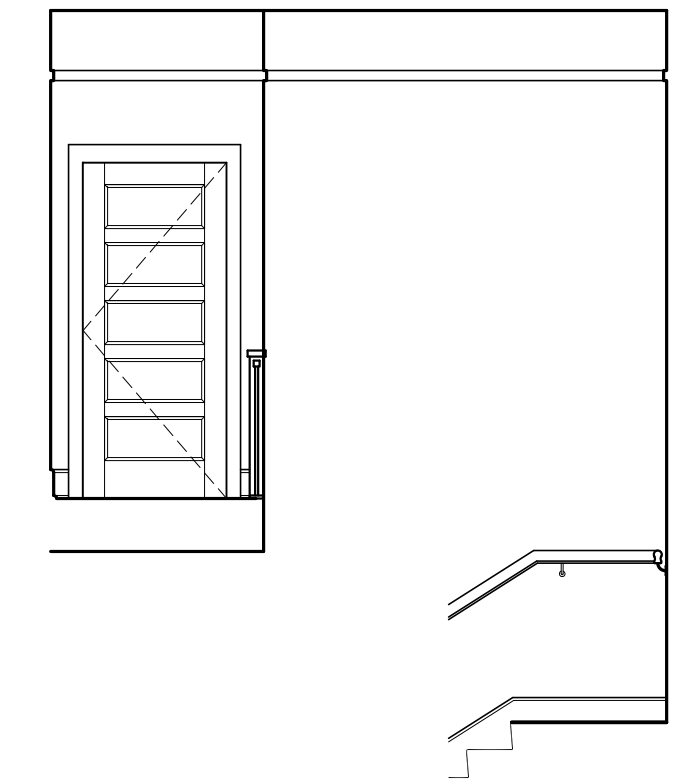
1 INTERIOR ELEVATION UNIT 110  
1/4"=1'-0"



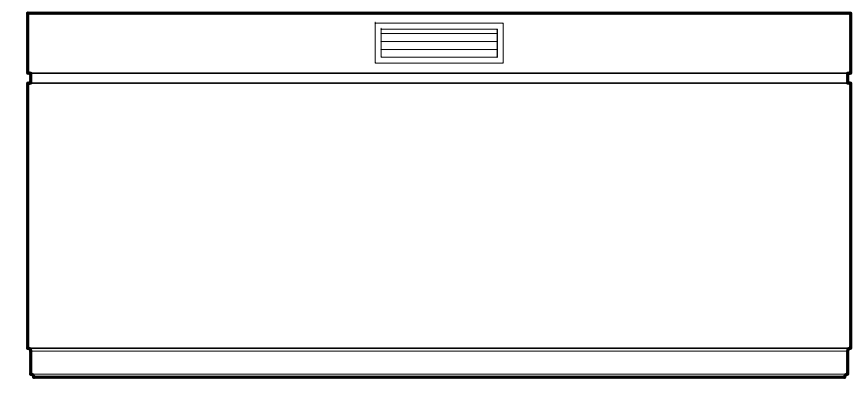
2 INTERIOR ELEVATION UNIT 110  
1/4"=1'-0"



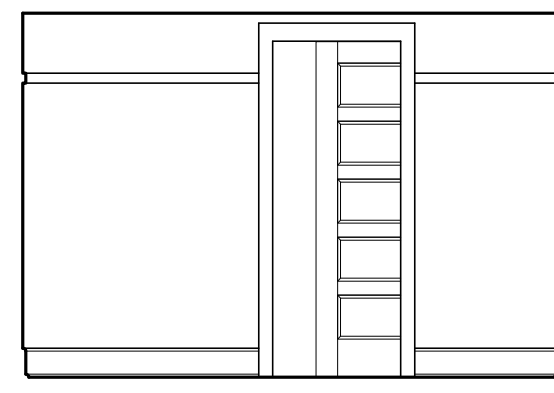
3 INTERIOR ELEVATION UNIT 110  
1/4"=1'-0"



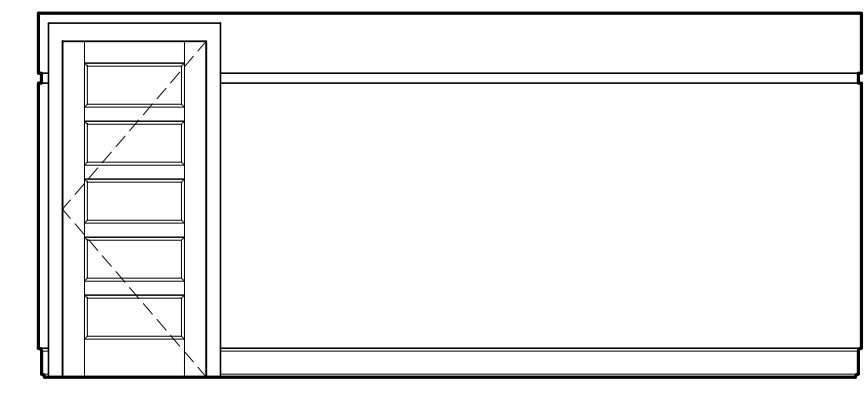
4 INTERIOR ELEVATION UNIT 110  
1/4"=1'-0"



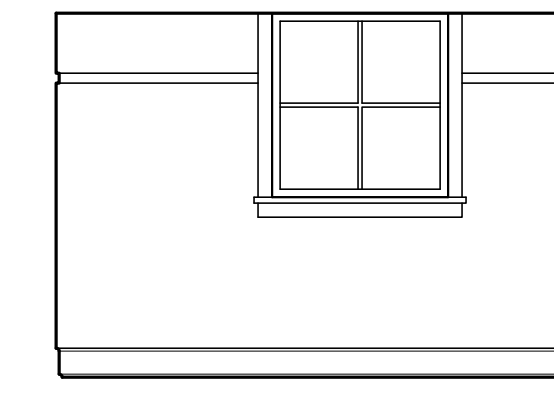
5 INTERIOR ELEVATION UNIT 110  
1/4"=1'-0"



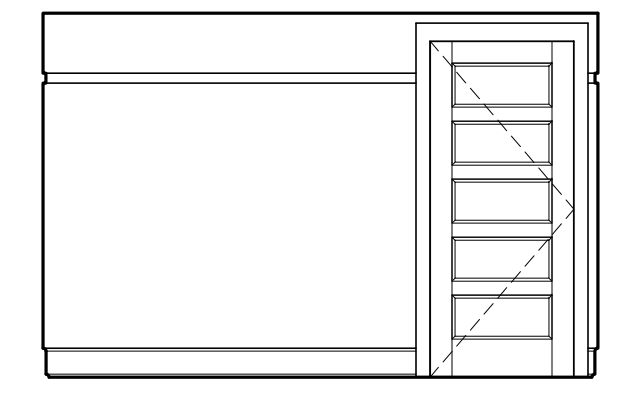
6 INTERIOR ELEVATION UNIT 110  
1/4"=1'-0"



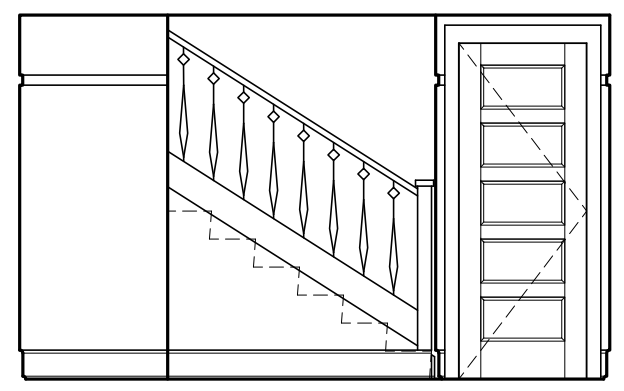
7 INTERIOR ELEVATION UNIT 110  
1/4"=1'-0"



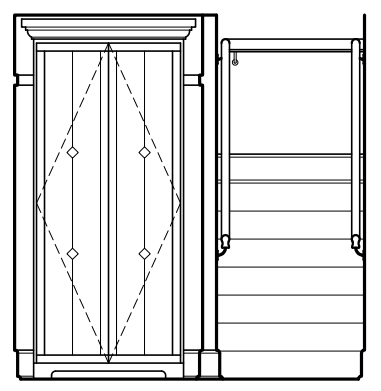
8 INTERIOR ELEVATION UNIT 110  
1/4"=1'-0"



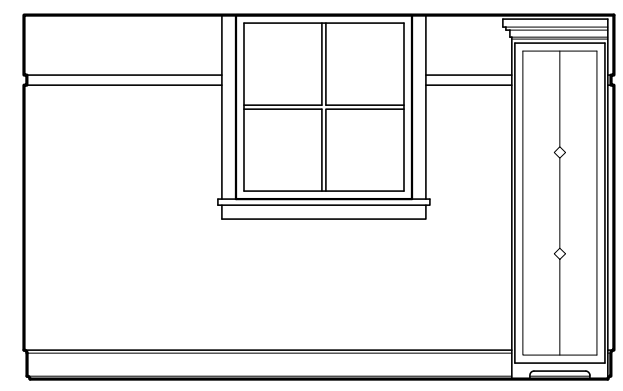
9 INTERIOR ELEVATION UNIT 110  
1/4"=1'-0"



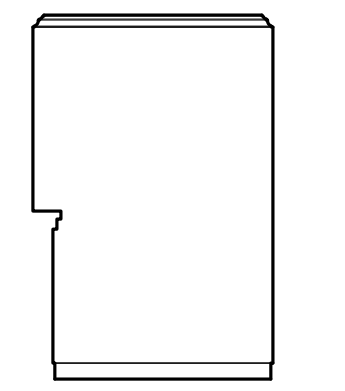
10 INTERIOR ELEVATION UNIT 110  
1/4"=1'-0"



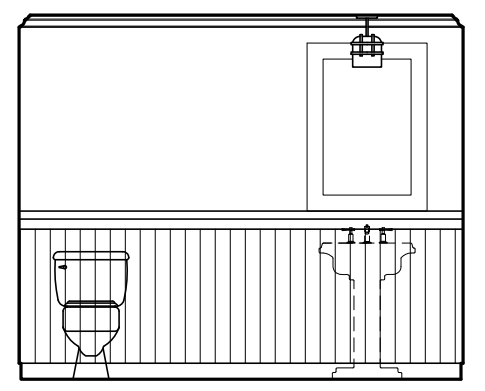
11 INTERIOR ELEVATION UNIT 110  
1/4"=1'-0"



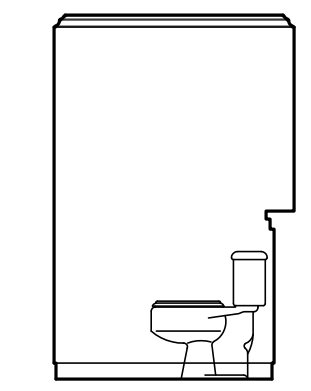
12 INTERIOR ELEVATION UNIT 110  
1/4"=1'-0"



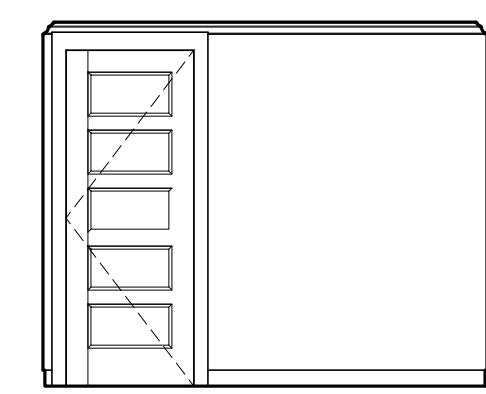
13 INT. ELEV. UNIT 110  
1/4"=1'-0"



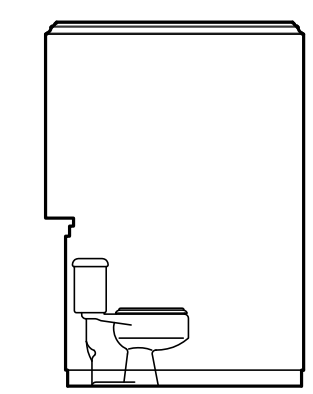
14 INTERIOR ELEVATION UNIT 110  
1/4"=1'-0"



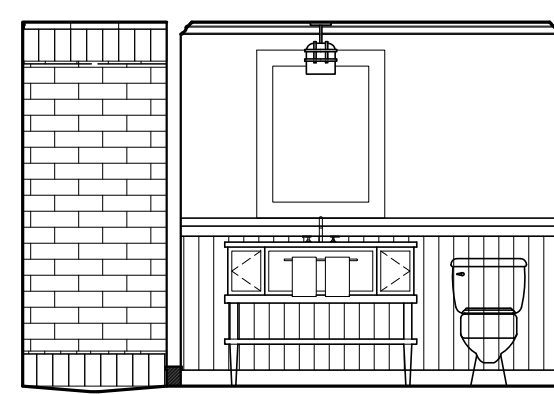
15 INT. ELEV. UNIT 110  
1/4"=1'-0"



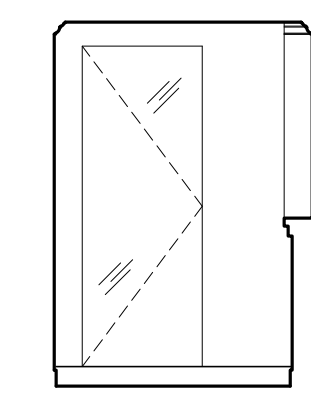
16 INTERIOR ELEVATION UNIT 110  
1/4"=1'-0"



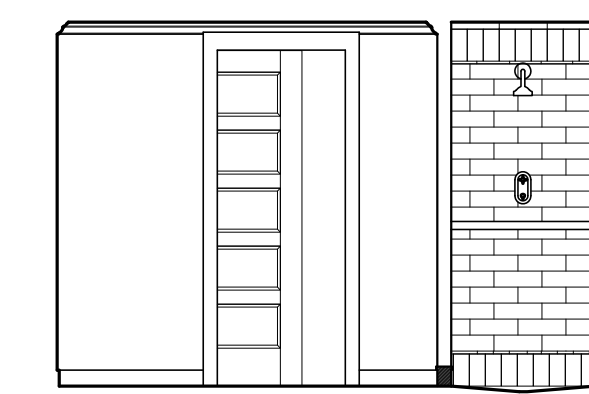
17 INT. ELEV. UNIT 110  
1/4"=1'-0"



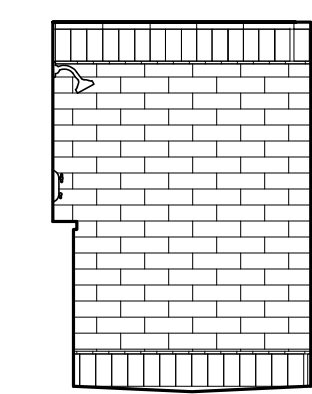
18 INTERIOR ELEVATION UNIT 110  
1/4"=1'-0"



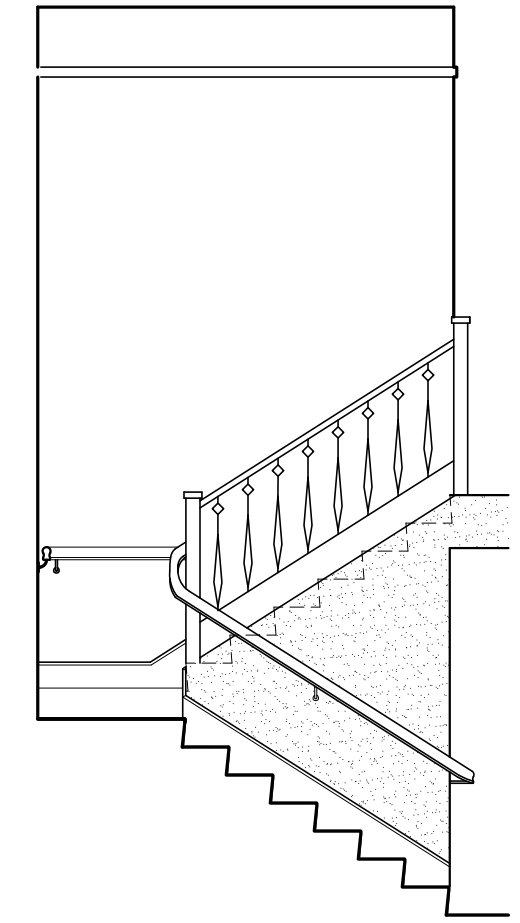
19 INT. ELEV. UNIT 110  
1/4"=1'-0"



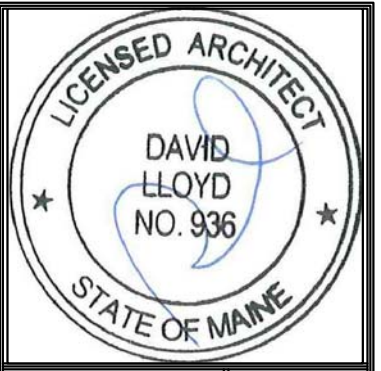
20 INTERIOR ELEVATION UNIT 110  
1/4"=1'-0"



21 INTERIOR ELEVATION UNIT 110  
1/4"=1'-0"



22 INTERIOR ELEVATION UNIT 110  
1/4"=1'-0"



Prepared For:  
**The Inn at Diamond Cove, LLC.**  
 PO BOX 3572  
 PORTLAND, ME 04101

Interior Designer:  
**truexculins**  
 INTERIORS  
 208 BATTERY STREET BURLINGTON, VERMONT 05401 USA  
 Phone 802.656.2775 800.227.1076  
 ARCHITECTURE | INTERIOR DESIGN | truexculins.com

Architect:  
**ARCHETYPE**  
 architects  
 48 Union Wharf Portland, Maine 04101  
 (207) 772-6022 Fax (207) 772-4056

Project:  
**THE INN AT DIAMOND COVE, LLC**  
 McKINLEY COURT  
 GREAT DIAMOND ISLAND, MAINE

Revisions:  
 Issued for Construction 03 Feb 14

Date: 03 Feb 2014  
 Scale: As Noted  
**INTERIOR ELEVATIONS UNITS 110, 126**

**A9.06**