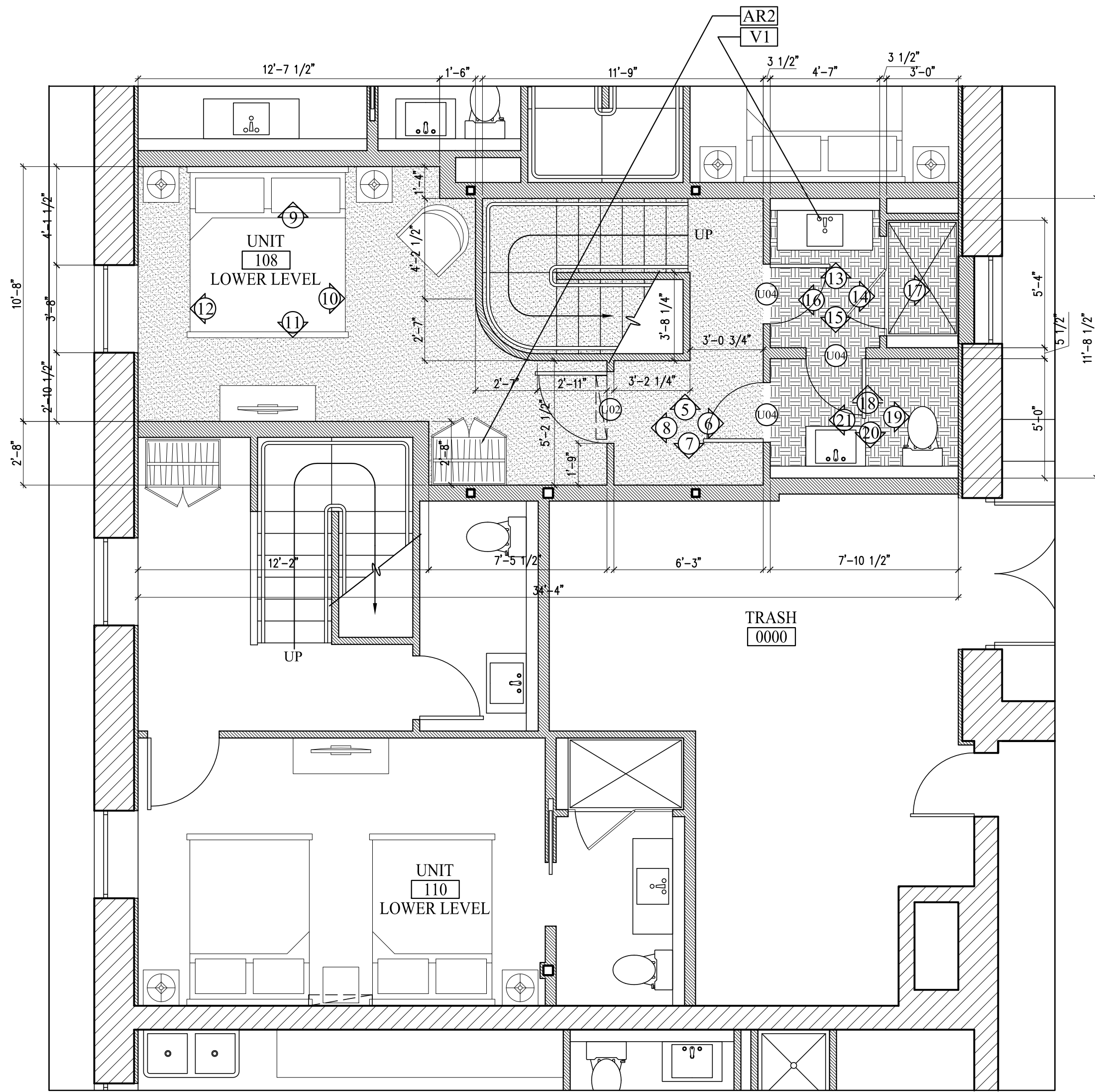





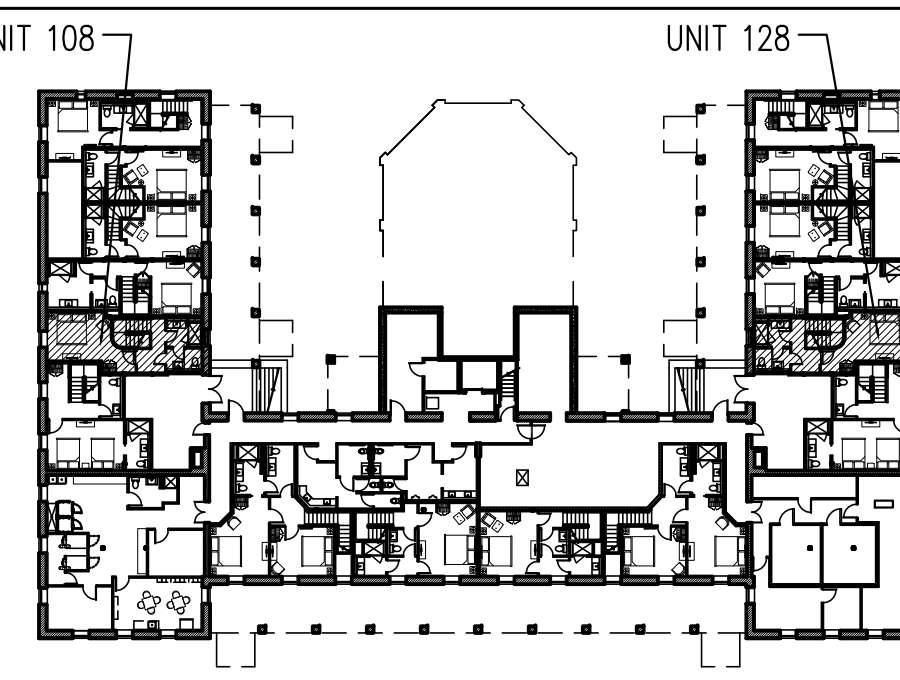
A ENLARGED FLOOR PLAN UNIT 108 FIRST FLOOR
1/4"=1'-0"



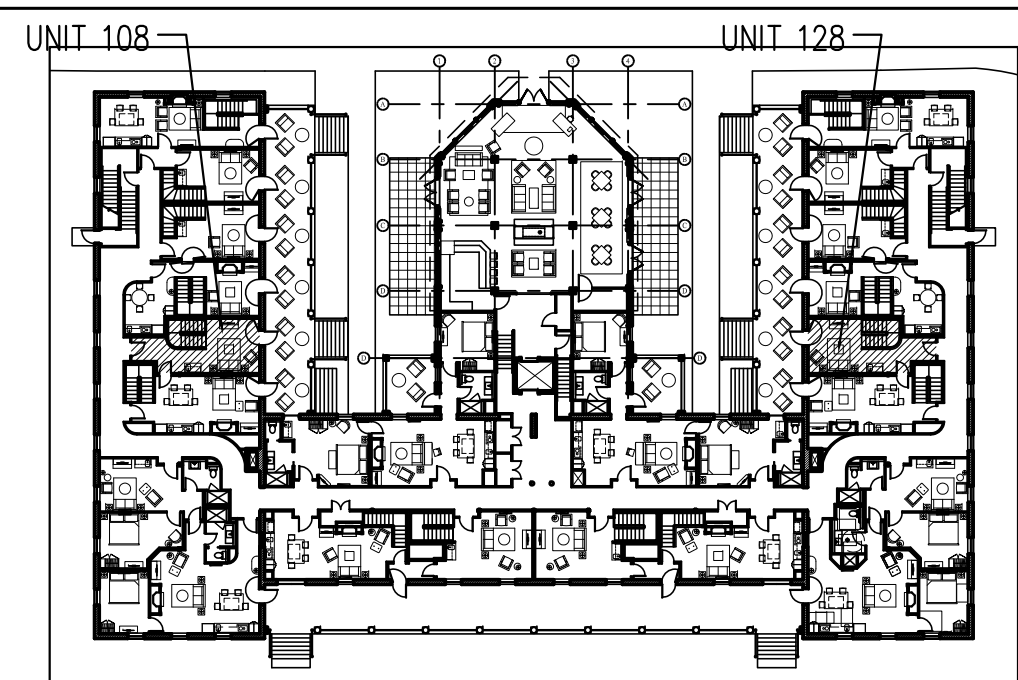
B ENLARGED FLOOR PLAN UNIT 108 BASEMENT
1/4"=1'-0"

FLOORING LEGEND
 HARDWOOD
 TILE
 CARPETING

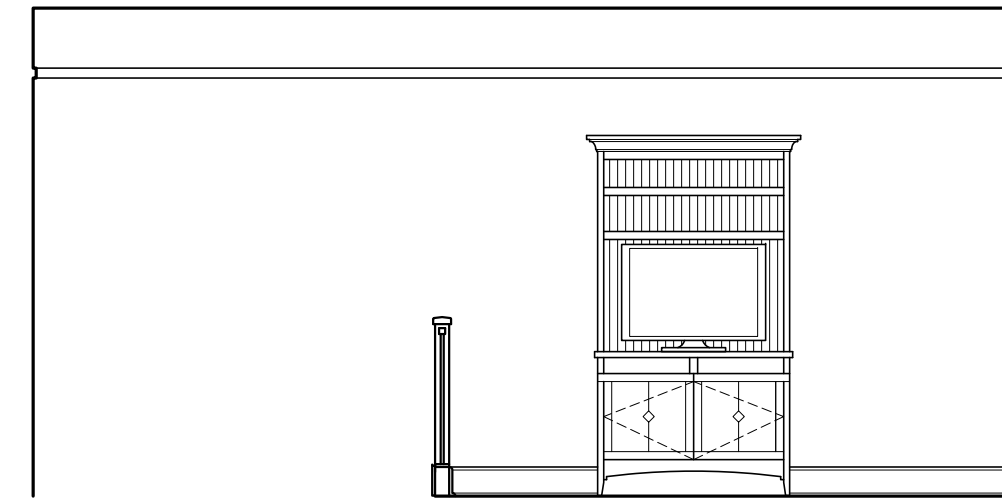
NOTES-
 -UNIT 108 SHOWN- 128 IS MIRRORRED
 -REFER TO 7.02, 9.00, 9.00A AND 9.00B FOR MILLWORK DETAILS



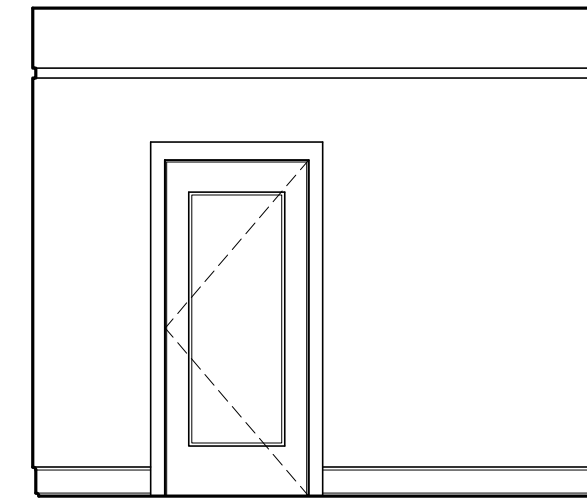
BASEMENT KEY PLAN- NTS



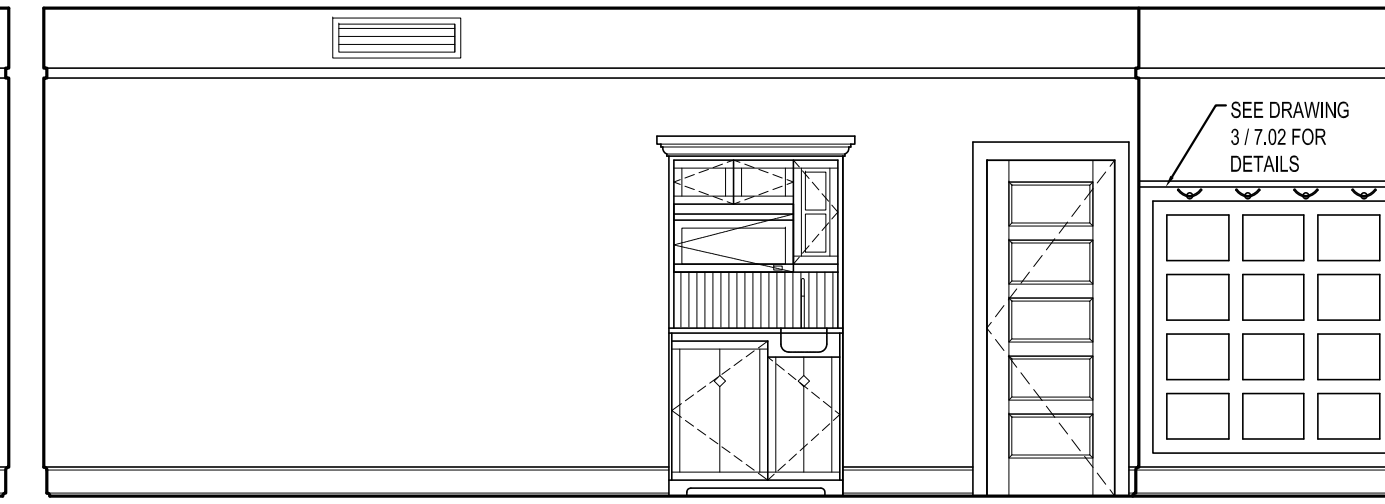
FIRST FLOOR KEY PLAN- NTS



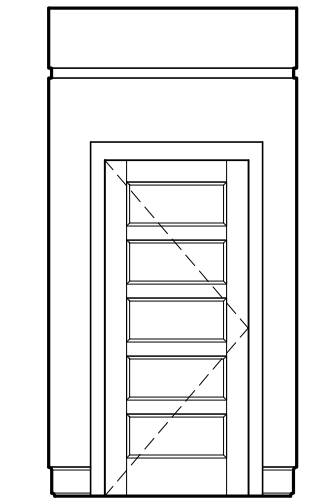
1 INTERIOR ELEVATION UNIT 108
1/4"=1'-0"



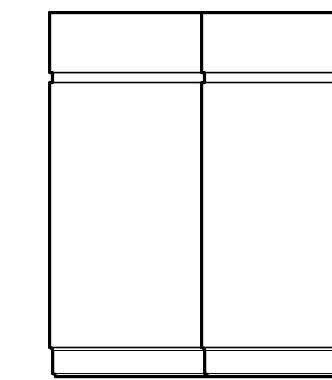
2 INTERIOR ELEVATION UNIT 108
1/4"=1'-0"



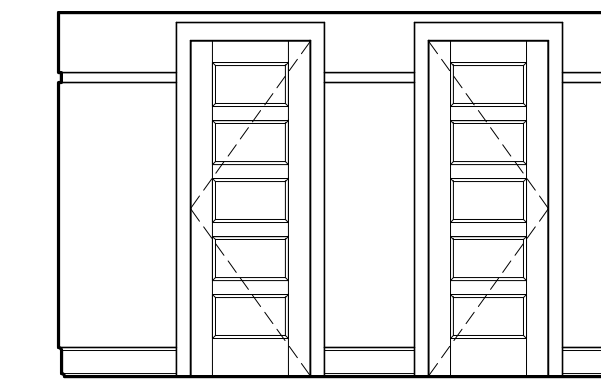
3 INTERIOR ELEVATION UNIT 108
1/4"=1'-0"



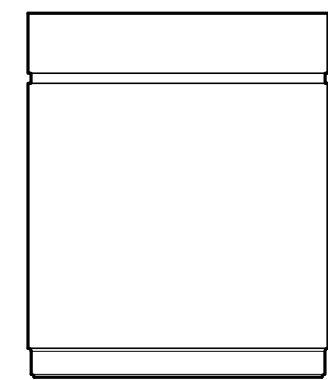
4 INT. ELEV. UNIT 108
1/4"=1'-0"



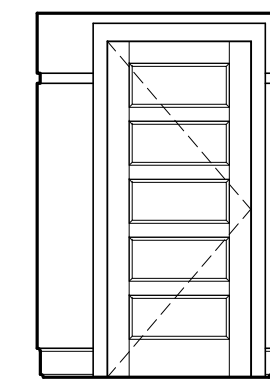
5 INT. ELEV. UNIT 108
1/4"=1'-0"



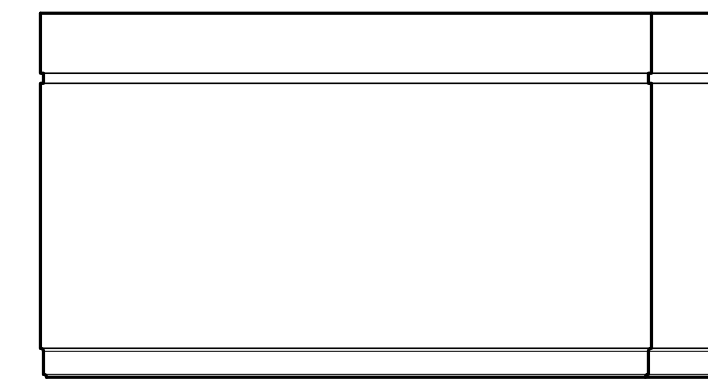
6 INTERIOR ELEVATION UNIT 108
1/4"=1'-0"



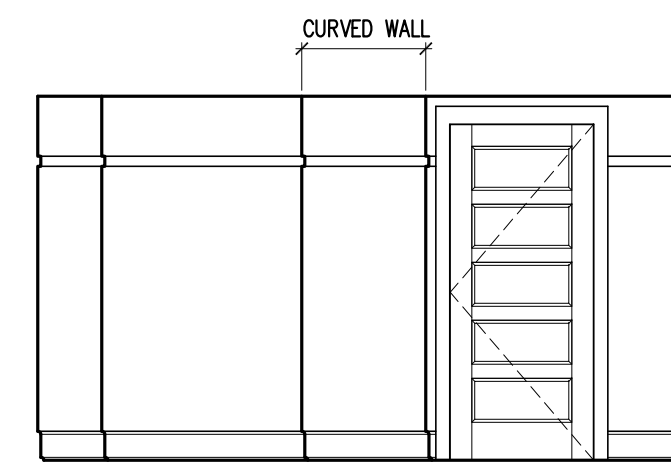
7 INT. ELEV. UNIT 108
1/4"=1'-0"



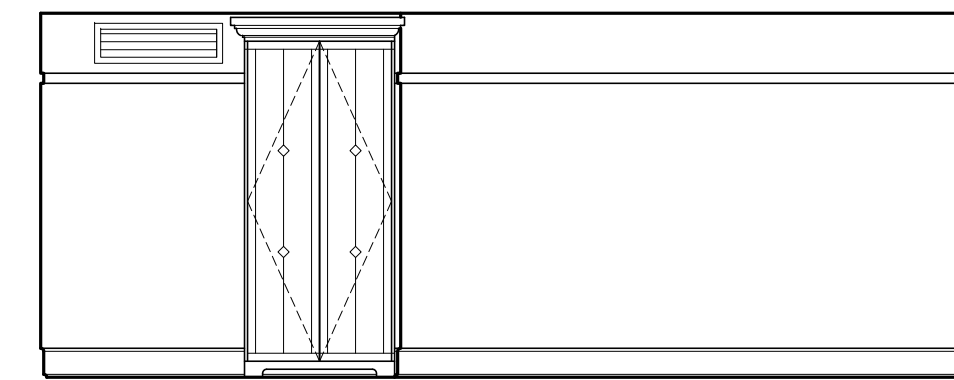
8 INT. ELEV. UNIT 108
1/4"=1'-0"



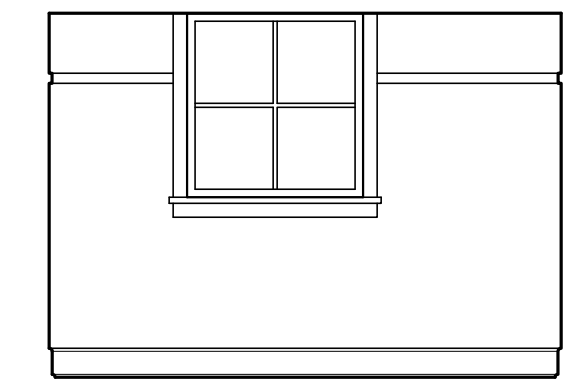
9 INTERIOR ELEVATION UNIT 108
1/4"=1'-0"



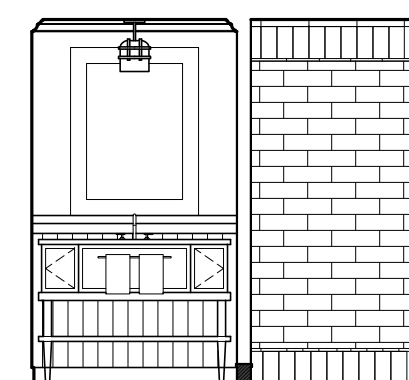
10 INTERIOR ELEVATION UNIT 108
1/4"=1'-0"



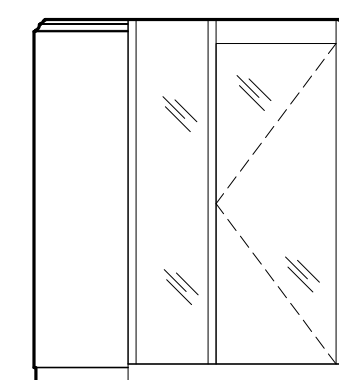
11 INTERIOR ELEVATION UNIT 108
1/4"=1'-0"



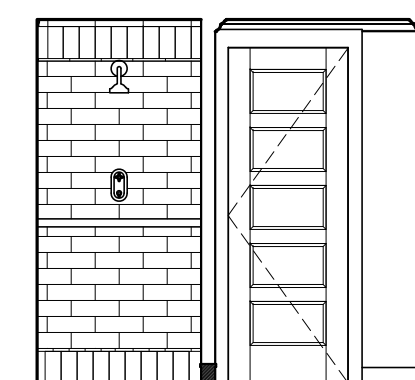
12 INTERIOR ELEVATION UNIT 108
1/4"=1'-0"



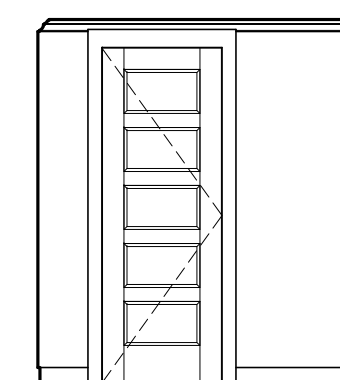
13 INTERIOR ELEVATION UNIT 108
1/4"=1'-0"



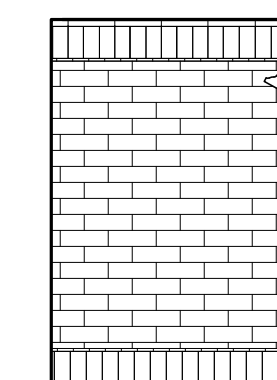
14 INTERIOR ELEVATION UNIT 108
1/4"=1'-0"



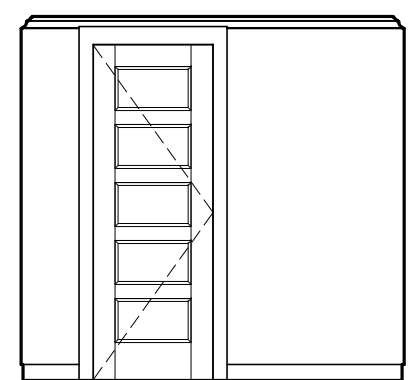
15 INTERIOR ELEVATION UNIT 108
1/4"=1'-0"



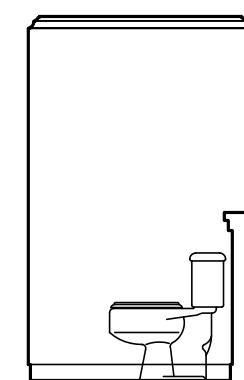
16 INT. ELEV. UNIT 108
1/4"=1'-0"



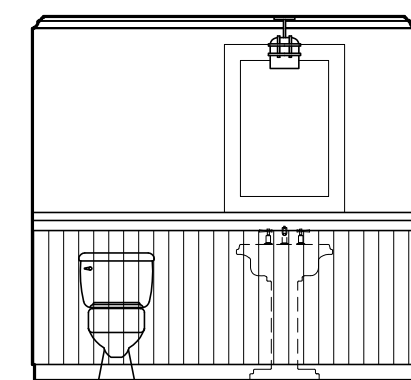
17 INT. ELEV. UNIT 108
1/4"=1'-0"



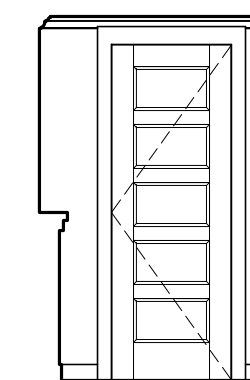
18 INTERIOR ELEVATION UNIT 108
1/4"=1'-0"



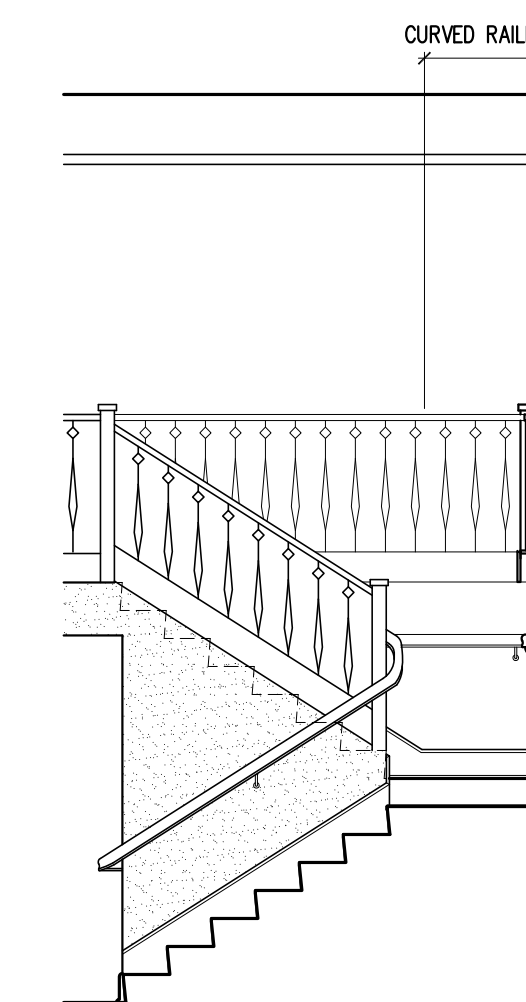
19 INTERIOR ELEVATION UNIT 108
1/4"=1'-0"



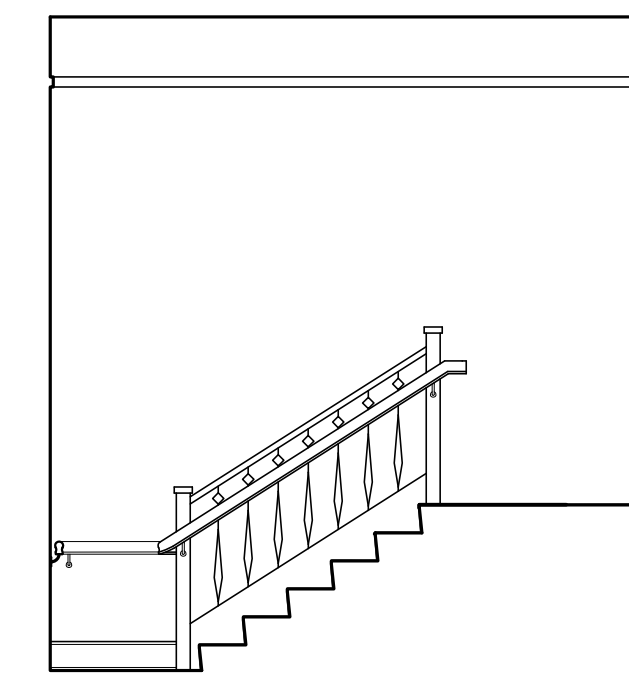
20 INTERIOR ELEVATION UNIT 108
1/4"=1'-0"



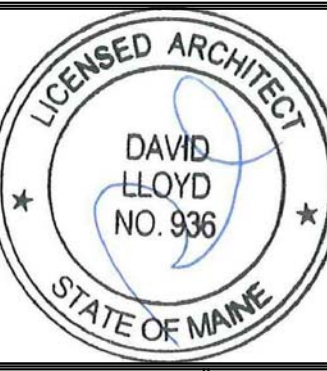
21 INTERIOR ELEVATION UNIT 108
1/4"=1'-0"



22 INTERIOR ELEVATION UNIT 108
1/4"=1'-0"



23 INTERIOR ELEVATION UNIT 108
1/4"=1'-0"



Prepared For:
The Inn at Diamond Cove, LLC.
 PO BOX 3572
 PORTLAND, ME 04101

Interior Designer:
truexculins
 INTERIORS
 208 BATTERY STREET BURLINGTON, VERMONT 05401 USA
 Phone 802.656.2775 800.227.1076
 ARCHITECTURE | INTERIOR DESIGN | truexculins.com

Architect:
ARCHETYPE
 architects
 48 Union Wharf Portland, Maine 04101
 (207) 772-6022 Fax (207) 772-4056

Project:
THE INN AT
DIAMOND COVE,
LLC
 MCKINLEY COURT
 GREAT DIAMOND ISLAND, MAINE

Revisions:
 Issued for Construction 03 Feb 14

Date:
 03 Feb 2014
 Scale:
 As Noted
INTERIOR
ELEVATIONS UNITS
108, 128

A9.05