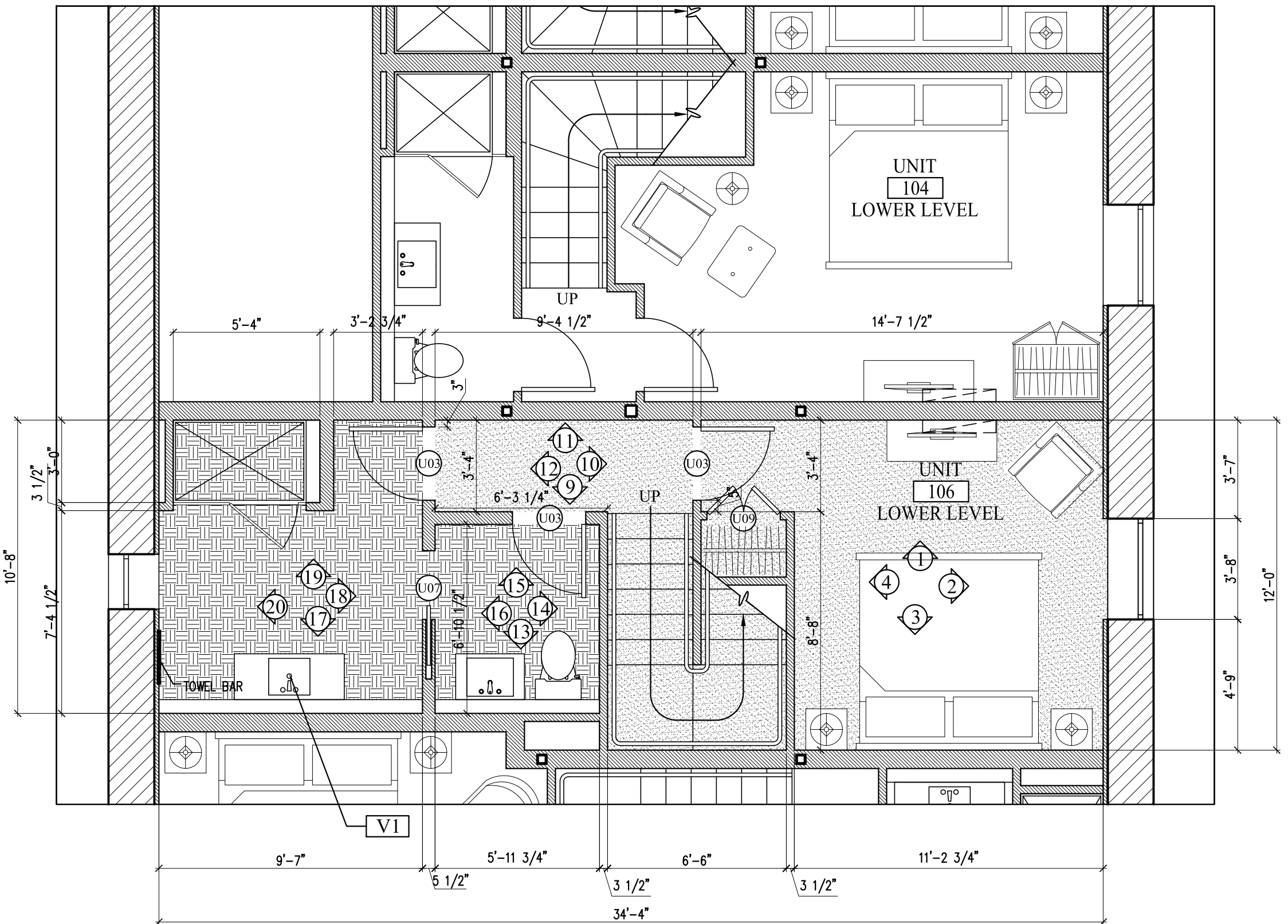


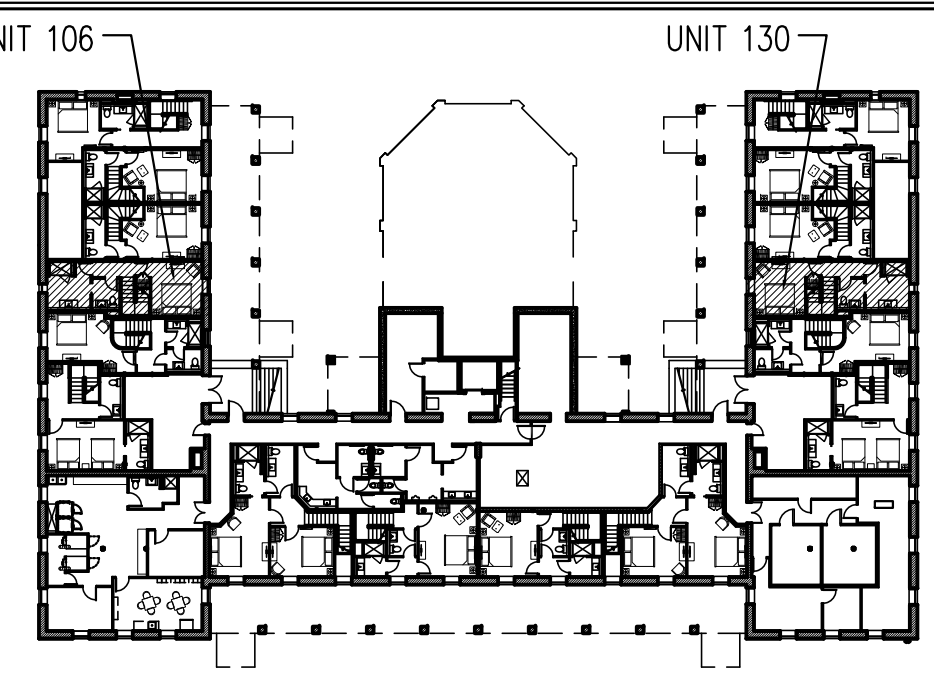
A ENLARGED FLOOR PLAN UNIT 106 FIRST FLOOR
1/4"=1'-0"



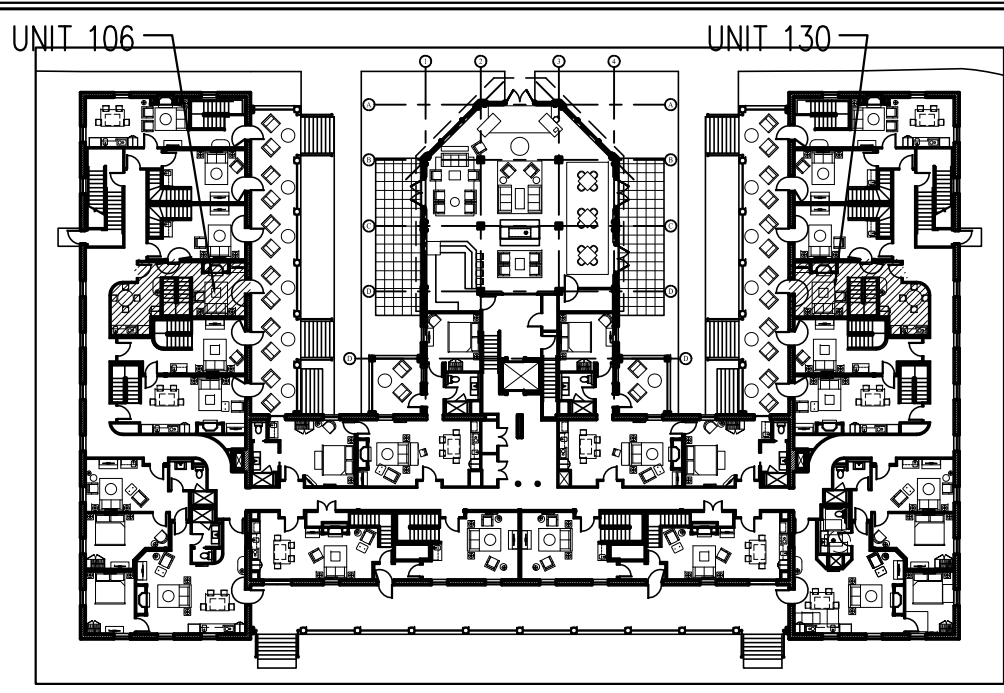
B ENLARGED FLOOR PLAN UNIT 106 BASEMENT
1/4"=1'-0"

FLOORING LEGEND
 HARDWOOD
 TILE
 CARPETING

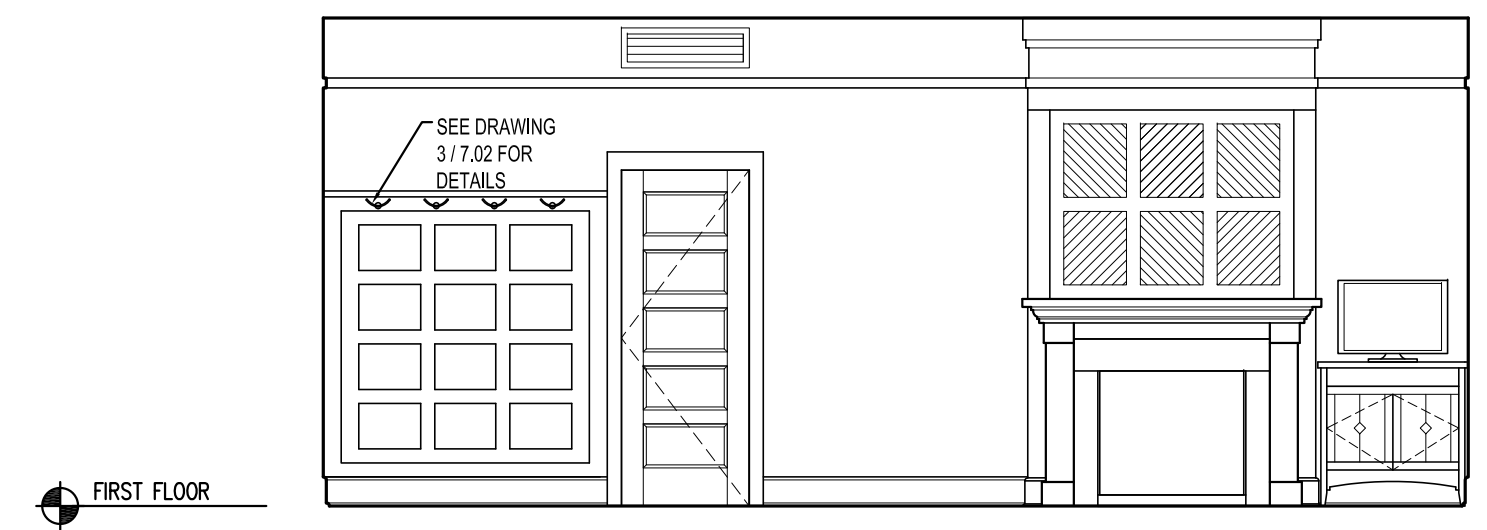
NOTES-
 -UNIT 106 SHOWN- 130 IS MIRRORRED
 -REFER TO 7.02, 9.00, 9.00A AND 9.00B FOR MILLWORK DETAILS



BASEMENT KEY PLAN- NTS

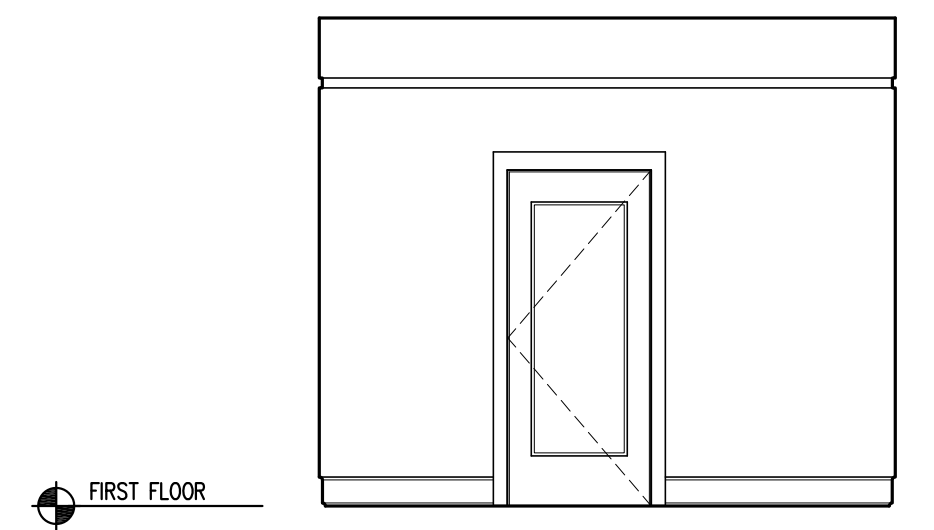


FIRST FLOOR KEY PLAN- NTS



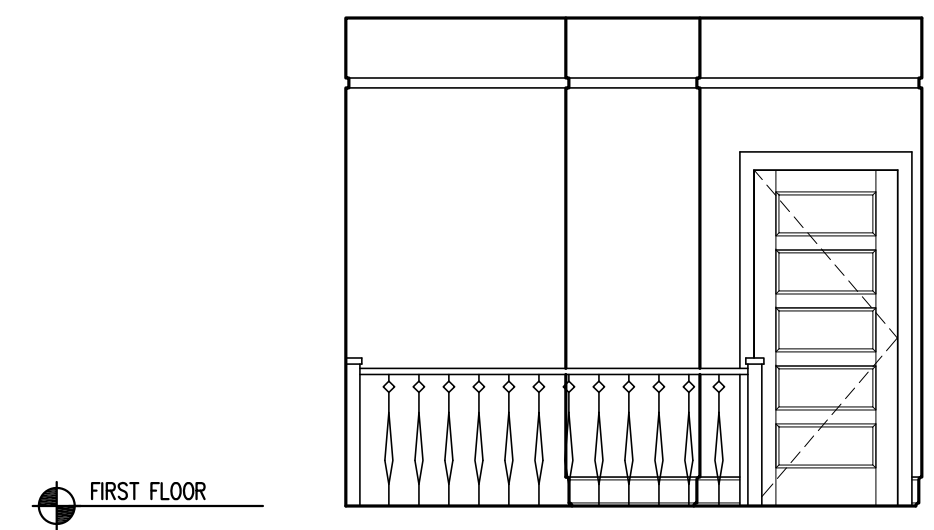
FIRST FLOOR

1 INTERIOR ELEVATION UNIT 106
1/4"=1'-0"



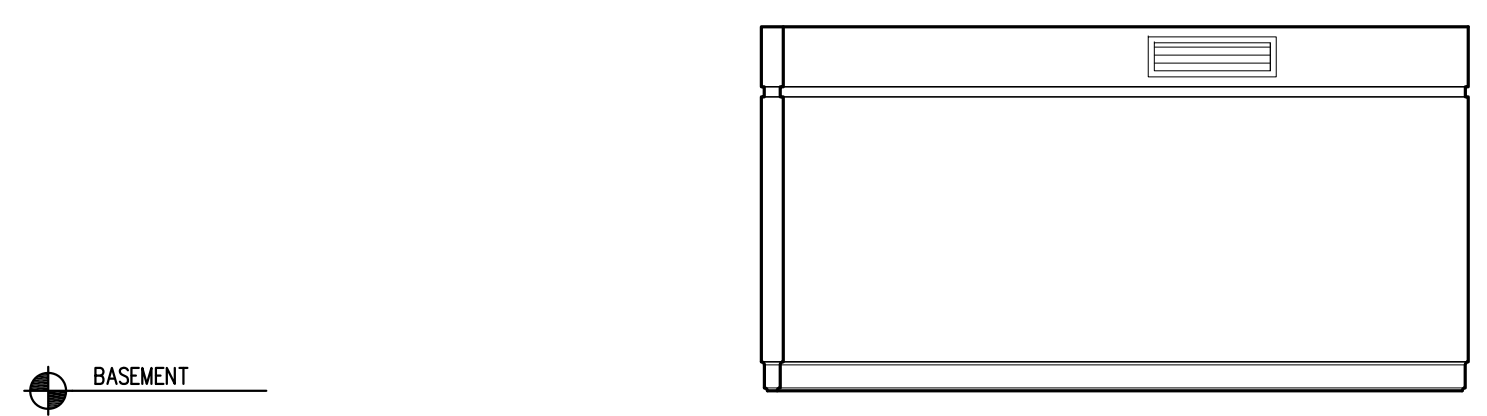
FIRST FLOOR

2 INTERIOR ELEVATION UNIT 106
1/4"=1'-0"

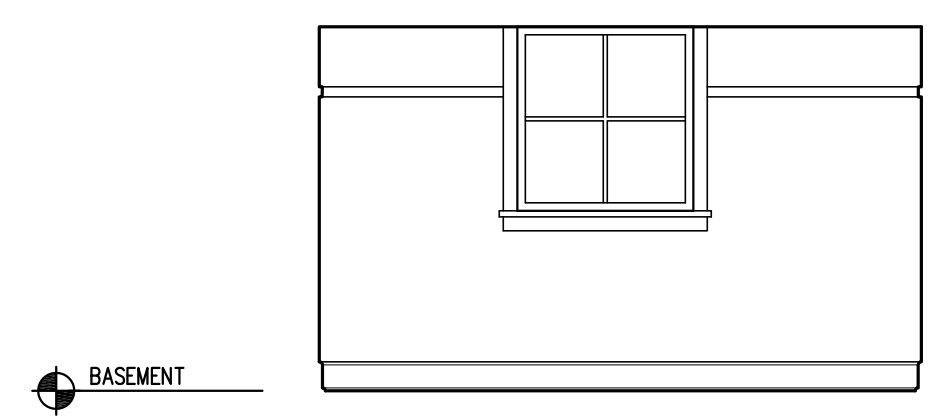


FIRST FLOOR

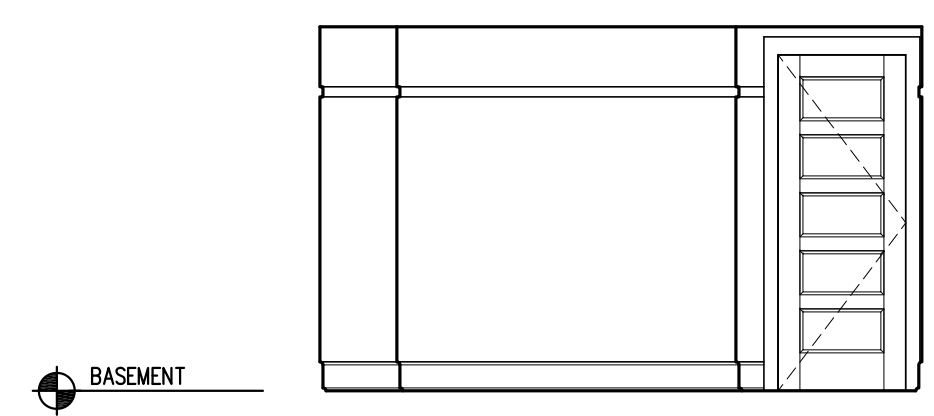
4 INTERIOR ELEVATION UNIT 106
1/4"=1'-0"



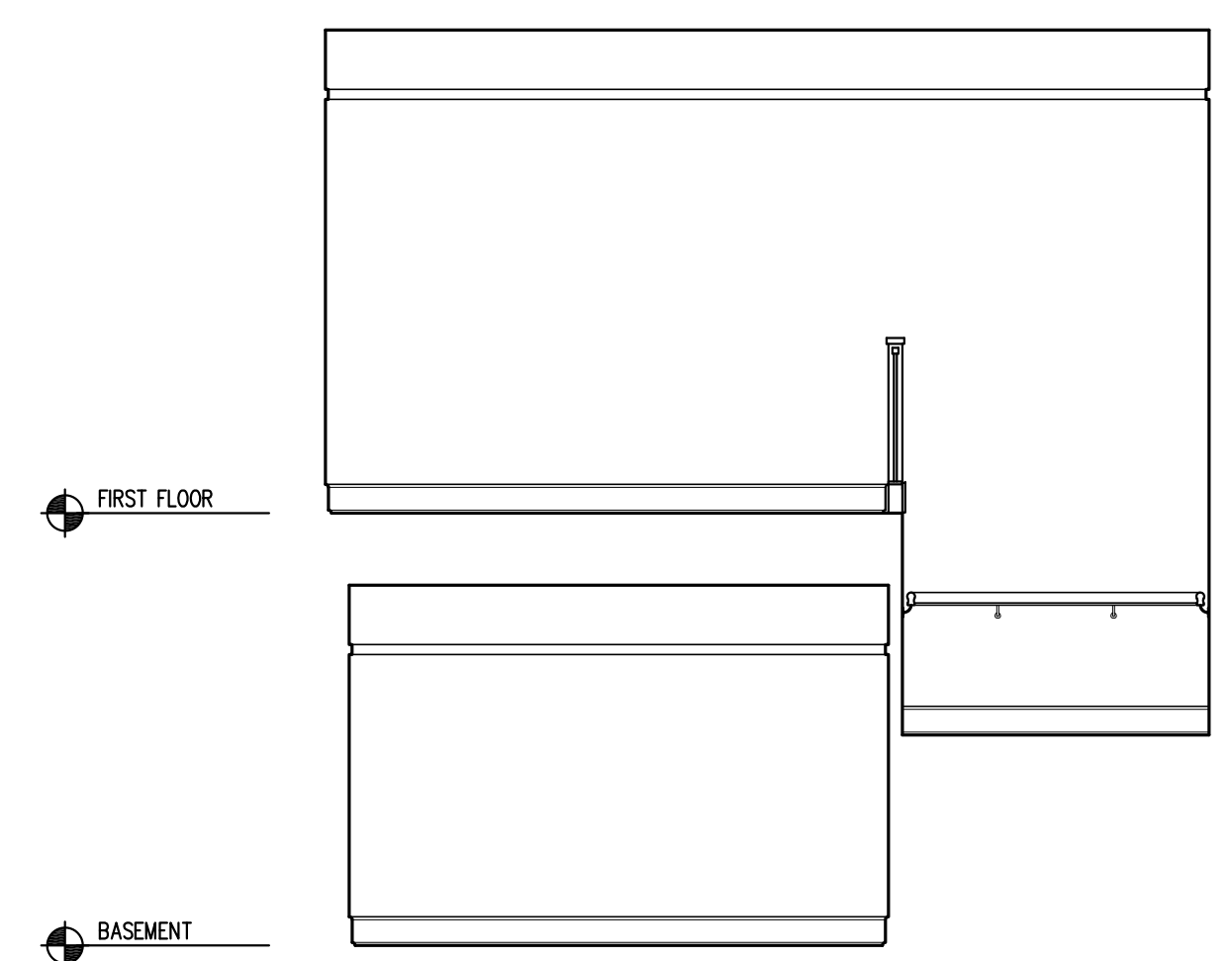
BASEMENT



BASEMENT

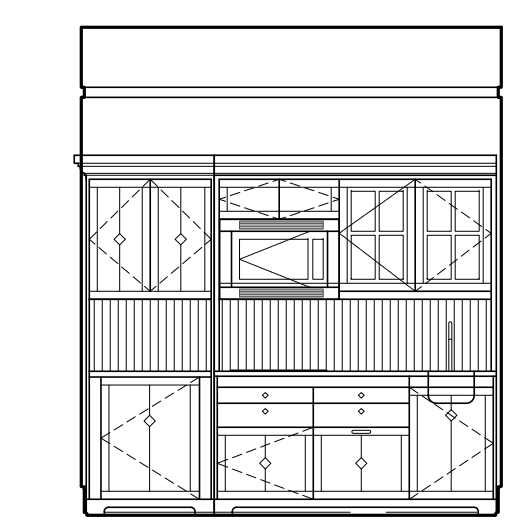


BASEMENT

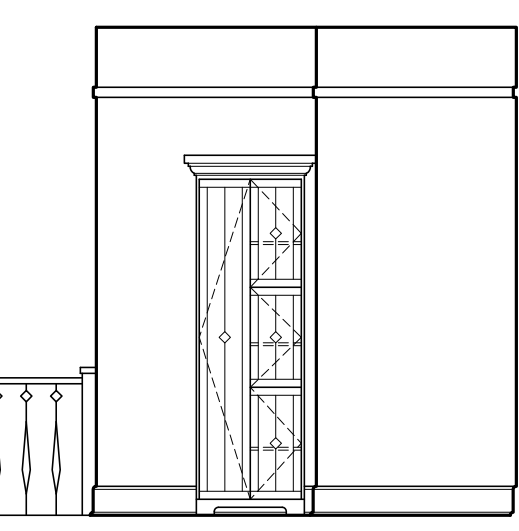


FIRST FLOOR

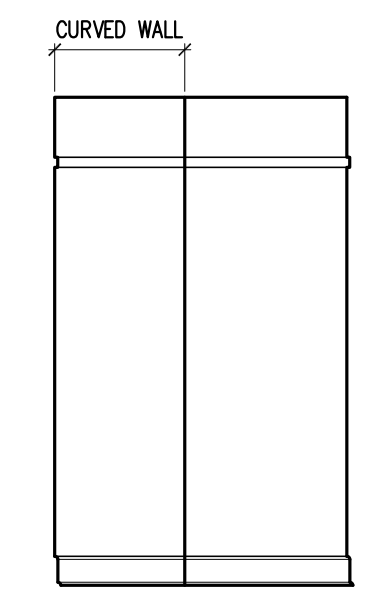
3 INTERIOR ELEVATION UNIT 106
1/4"=1'-0"



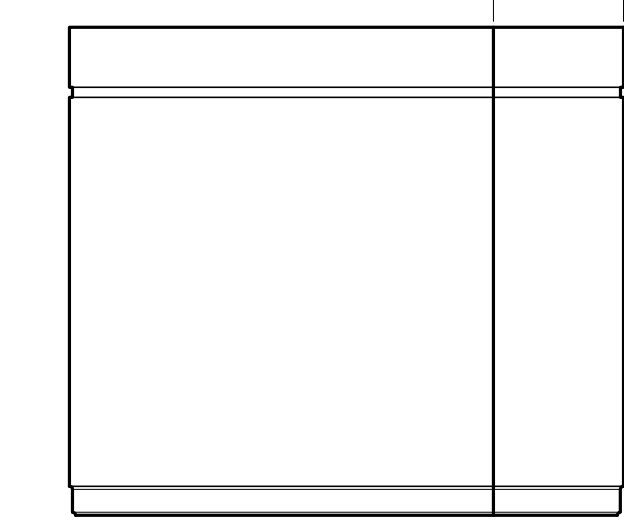
5 INTERIOR ELEVATION UNIT 106
1/4"=1'-0"



6 INTERIOR ELEVATION UNIT 106
1/4"=1'-0"

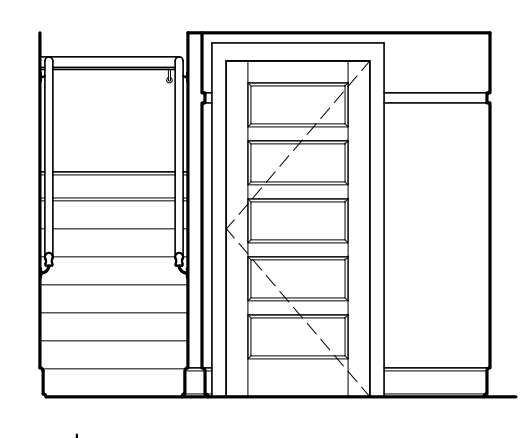


7 INTERIOR ELEVATION UNIT 106
1/4"=1'-0"

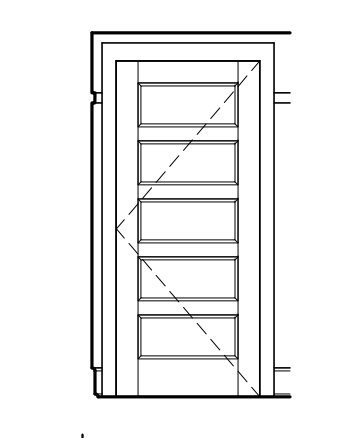


8 INTERIOR ELEVATION UNIT 106
1/4"=1'-0"

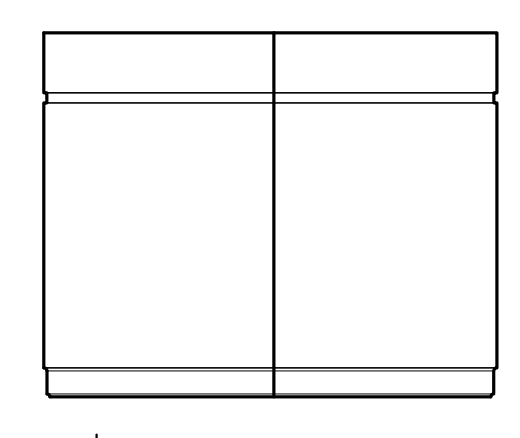
BASEMENT



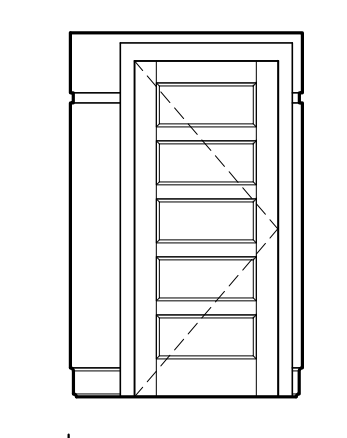
9 INTERIOR ELEVATION UNIT 102A
1/4"=1'-0"



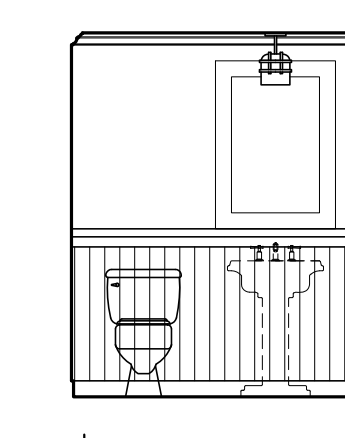
10 INT. ELEV. UNIT 102A
1/4"=1'-0"



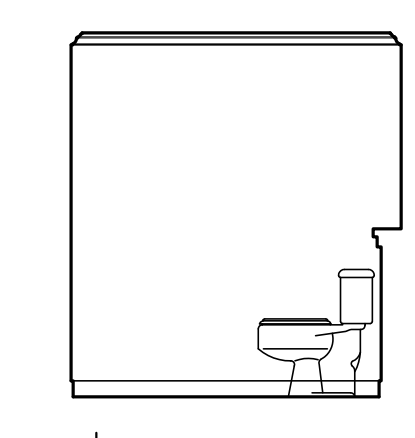
11 INTERIOR ELEVATION UNIT 102A
1/4"=1'-0"



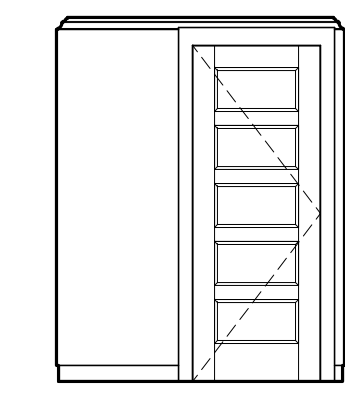
12 INT. ELEV. UNIT 102A
1/4"=1'-0"



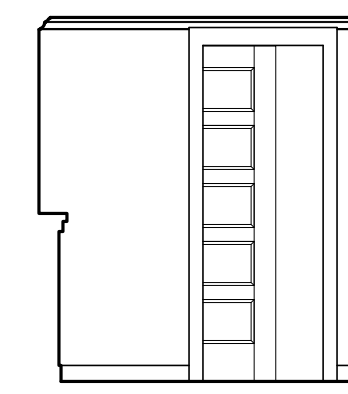
13 INT. ELEV. UNIT 102A
1/4"=1'-0"



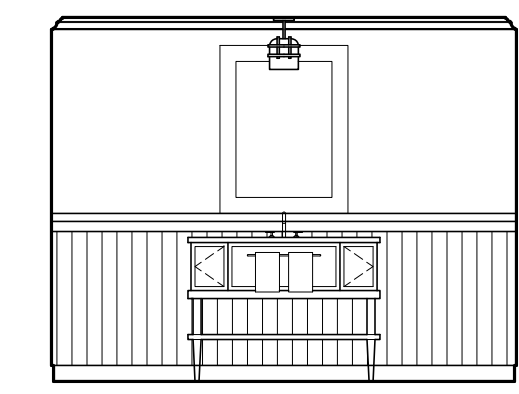
14 INT. ELEV. UNIT 102A
1/4"=1'-0"



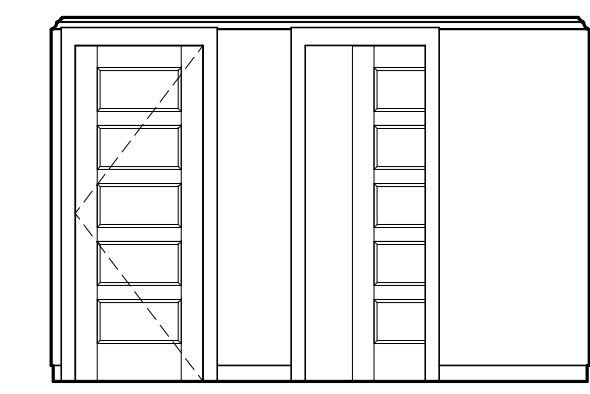
15 INT. ELEV. UNIT 106
1/4"=1'-0"



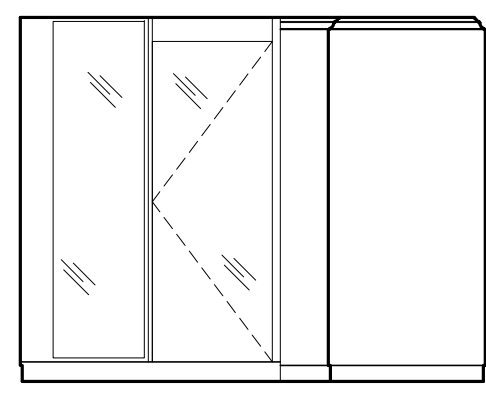
16 INT. ELEV. UNIT 106
1/4"=1'-0"



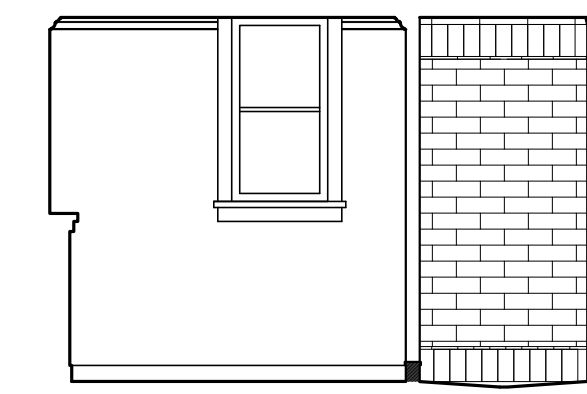
17 INTERIOR ELEVATION UNIT 106
1/4"=1'-0"



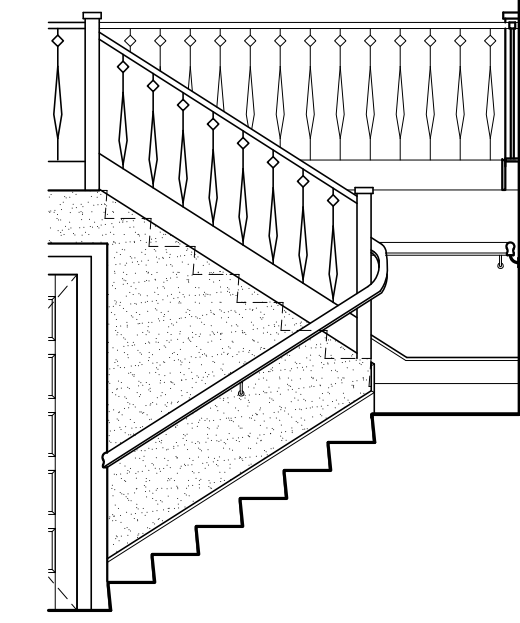
18 INTERIOR ELEVATION UNIT 106
1/4"=1'-0"



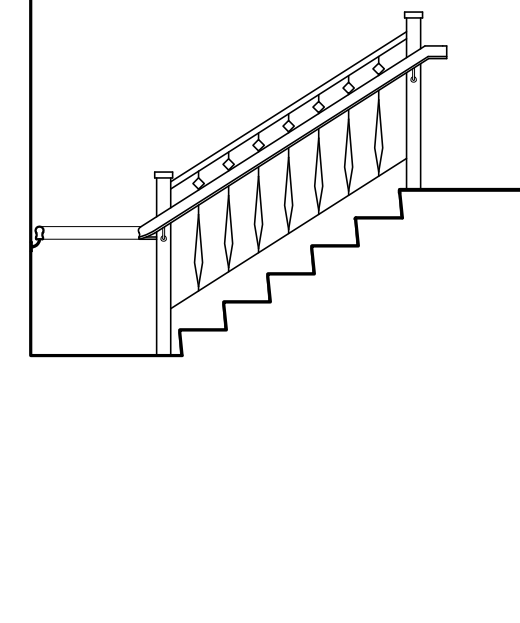
19 INTERIOR ELEVATION UNIT 106
1/4"=1'-0"



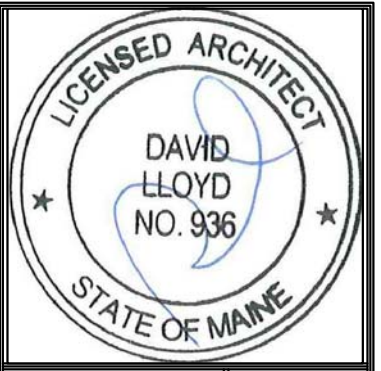
20 INTERIOR ELEVATION UNIT 106
1/4"=1'-0"



21 INTERIOR ELEVATION UNIT 106
1/4"=1'-0"



22 INTERIOR ELEVATION UNIT 106
1/4"=1'-0"



Prepared For:
The Inn at Diamond Cove, LLC.
 PO BOX 3572
 PORTLAND, ME 04101

Interior Designer:
truexculins
 INTERIORS
 208 BATTERY STREET BURLINGTON, VERMONT 05401 USA
 Phone 802.656.2775 800.227.1076
 ARCHITECTURE | INTERIOR DESIGN | truexculins.com

Architect:
ARCHETYPE
 architects
 48 Union Wharf Portland, Maine 04101
 (207) 772-6022 Fax (207) 772-4056

Project:
THE INN AT DIAMOND COVE, LLC
 McKINLEY COURT
 GREAT DIAMOND ISLAND, MAINE

Revisions:
 Issued for Construction 03 Feb 14

Date: 03 Feb 2014
 Scale: As Noted
INTERIOR ELEVATIONS UNITS 106, 130

A9.04