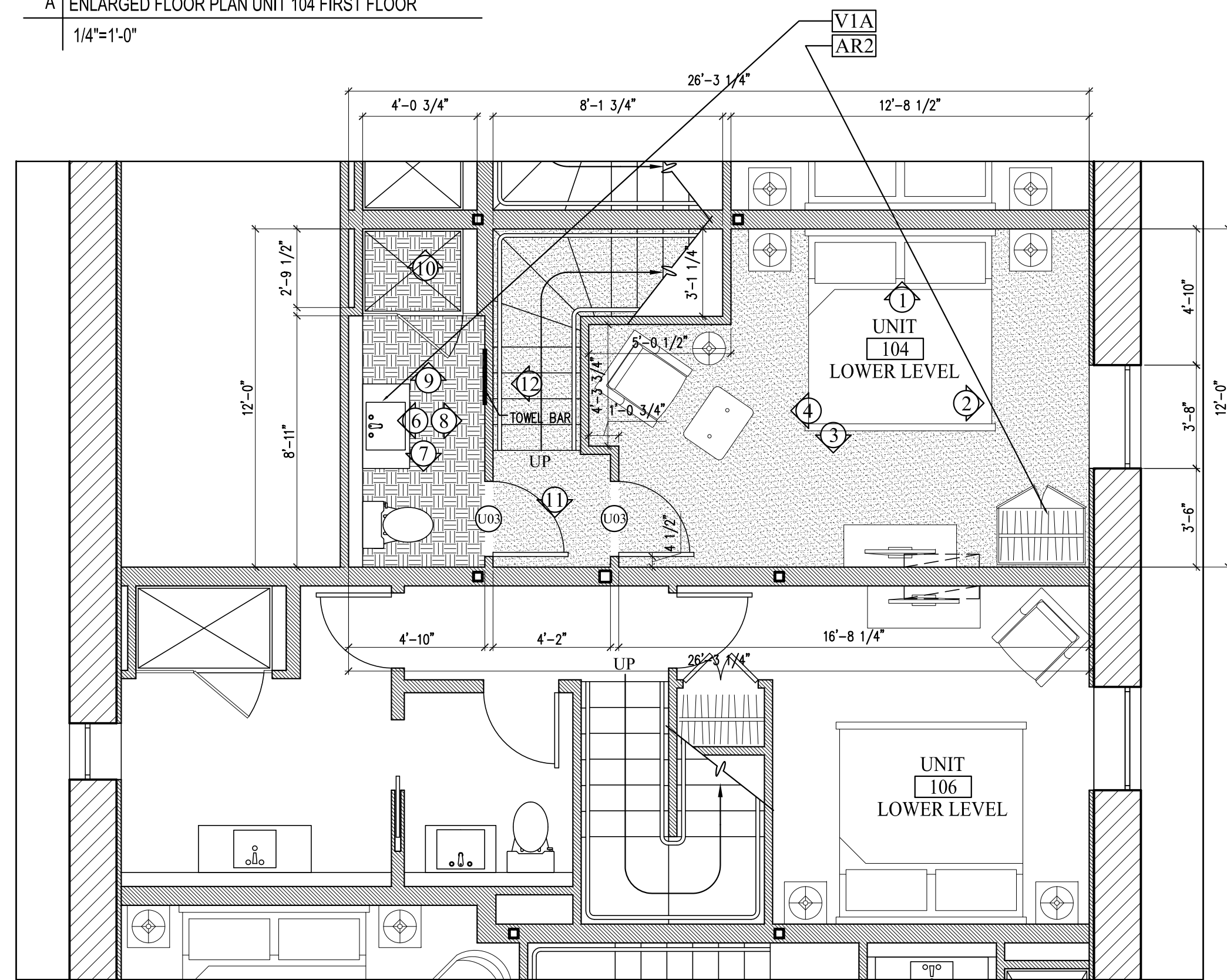


A ENLARGED FLOOR PLAN UNIT 104 FIRST FLOOR  
1/4"=1'-0"

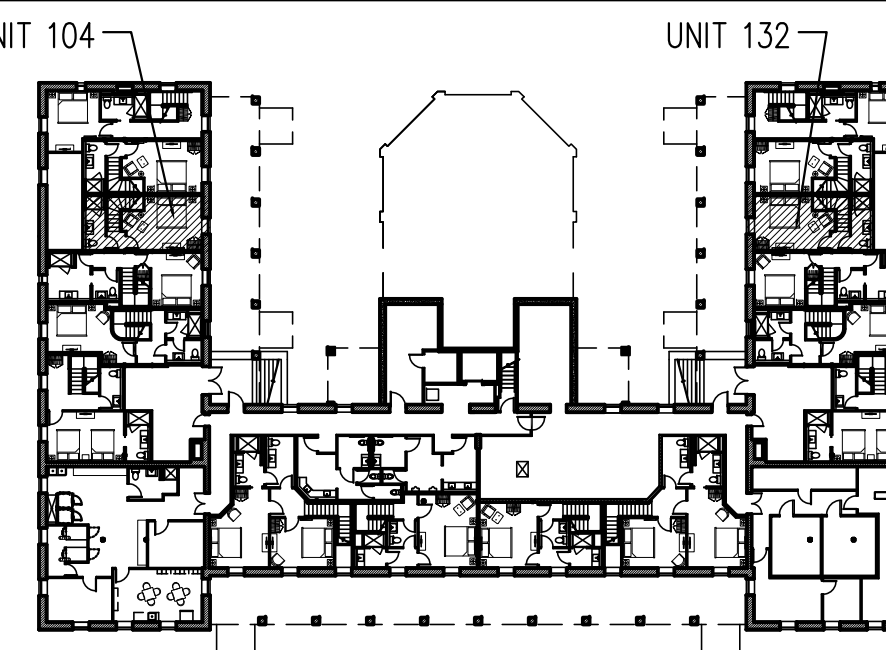


B ENLARGED FLOOR PLAN UNIT 104 BASEMENT  
1/4"=1'-0"

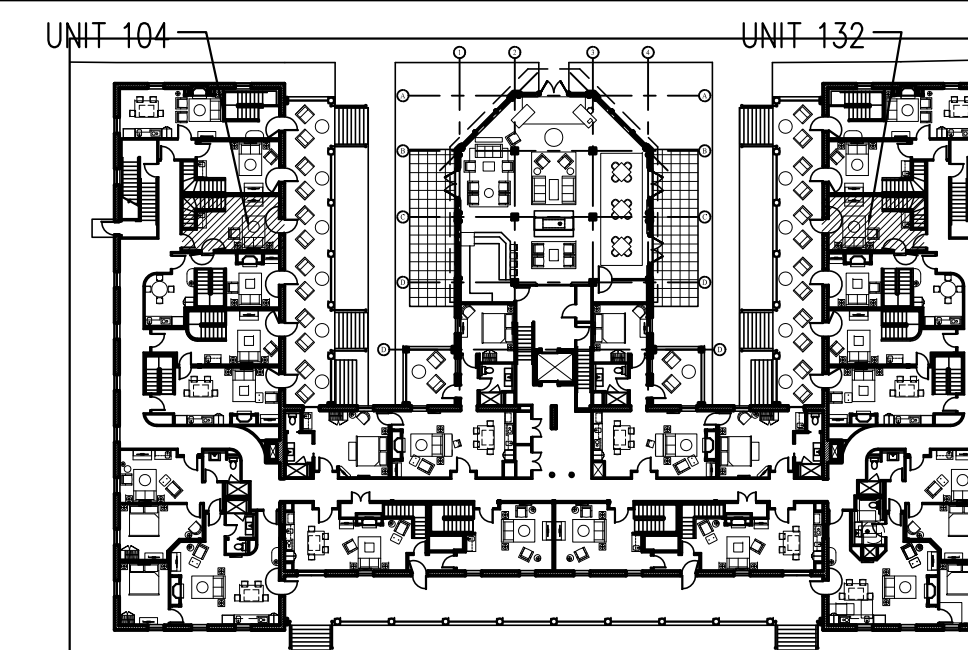
FLOORING LEGEND

- HARDWOOD
- TILE
- CARPETING

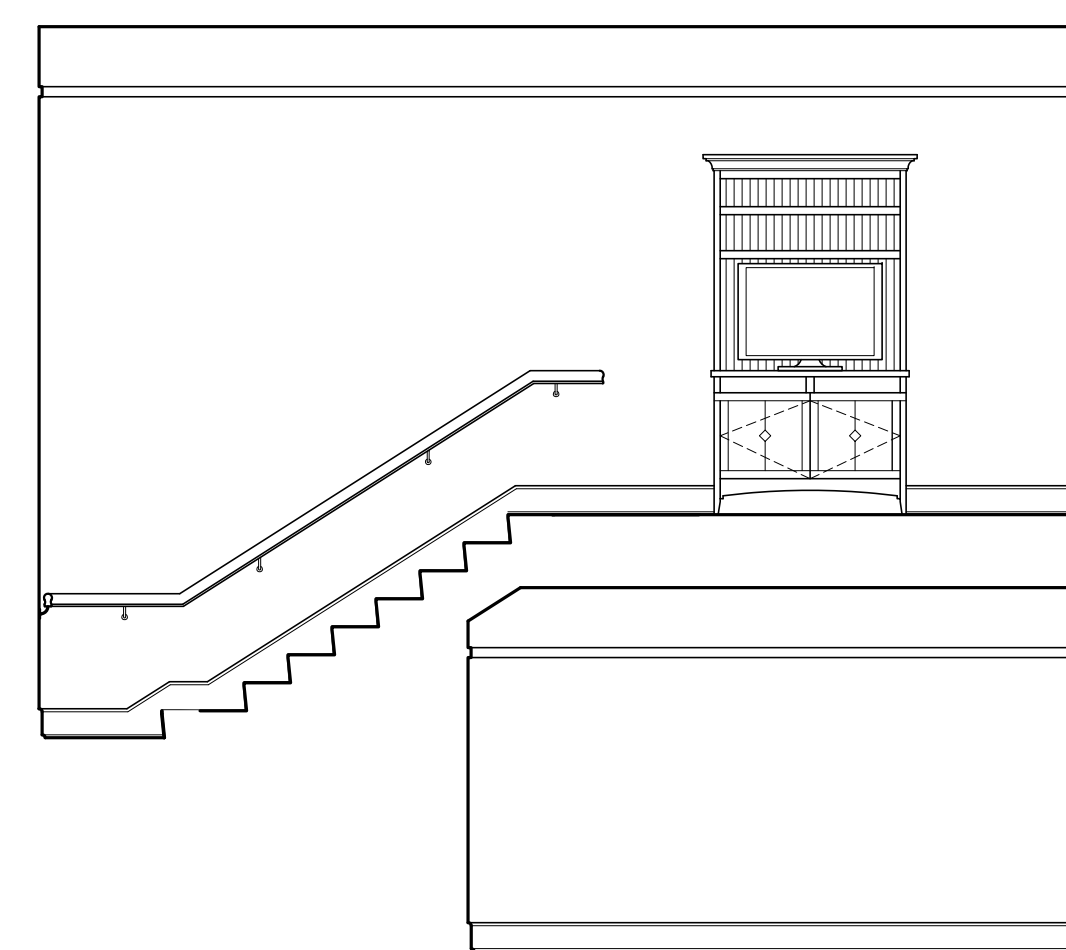
NOTES-  
-UNIT 104 SHOWN- 132 IS MIRRORRED  
-REFER TO 7.02, 9.00, 9.00A AND 9.00B FOR MILLWORK DETAILS



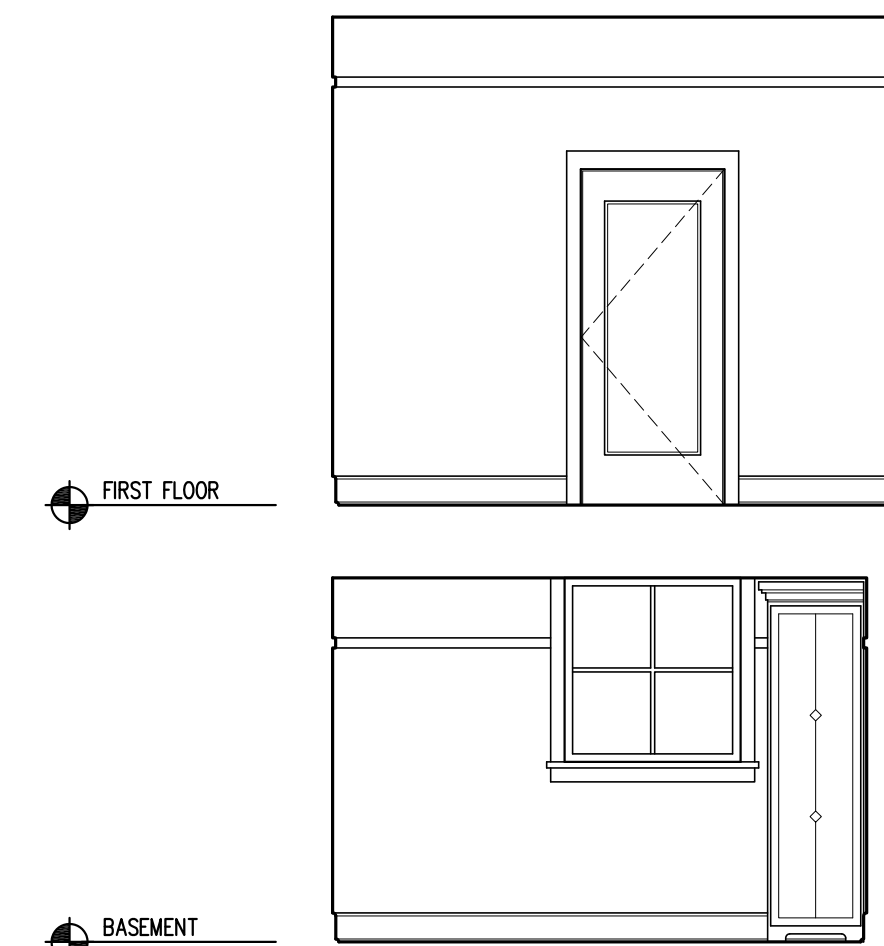
BASEMENT KEY PLAN- NTS



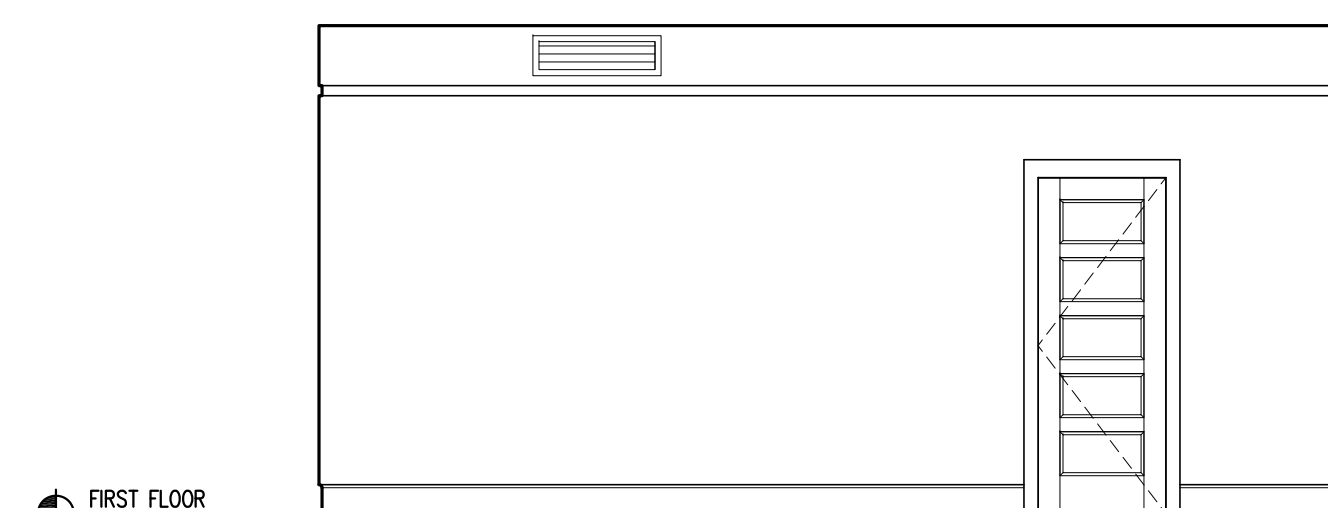
FIRST FLOOR KEY PLAN- NTS



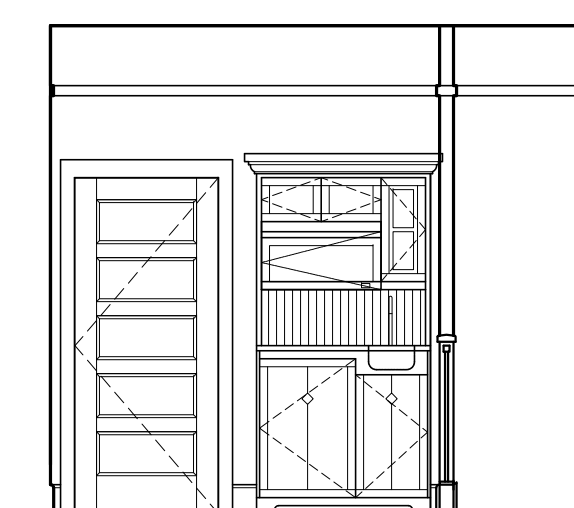
1 INTERIOR ELEVATION UNIT 104  
1/4"=1'-0"



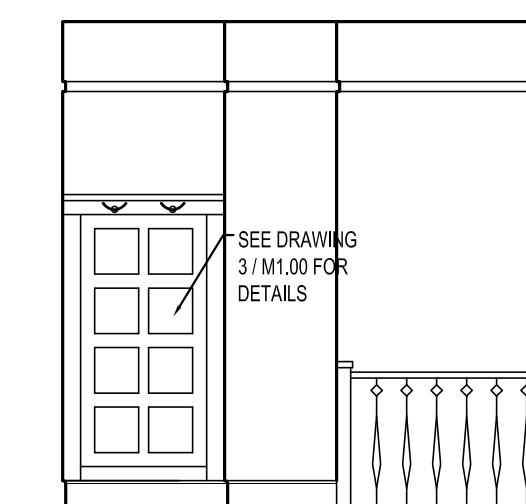
2 INTERIOR ELEVATION UNIT 104  
1/4"=1'-0"



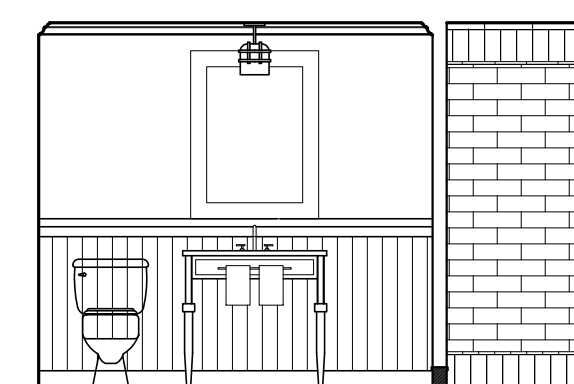
3 INTERIOR ELEVATION UNIT 104  
1/4"=1'-0"



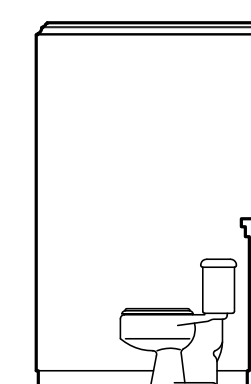
4 INTERIOR ELEVATION UNIT 104  
1/4"=1'-0"



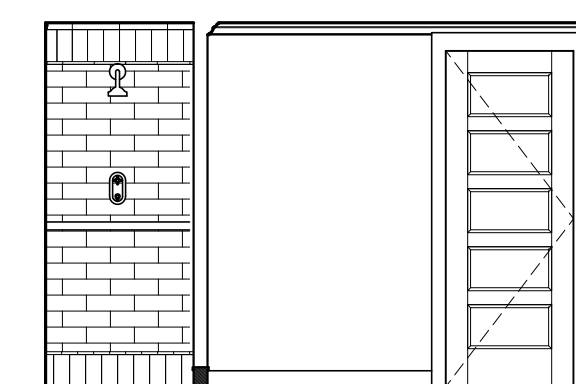
5 INTERIOR ELEVATION UNIT 104  
1/4"=1'-0"



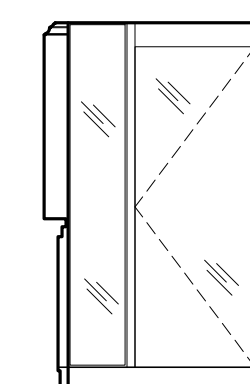
6 INTERIOR ELEVATION UNIT 104  
1/4"=1'-0"



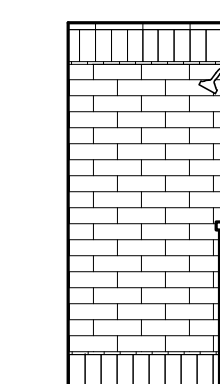
7 INTERIOR ELEVATION UNIT 104  
1/4"=1'-0"



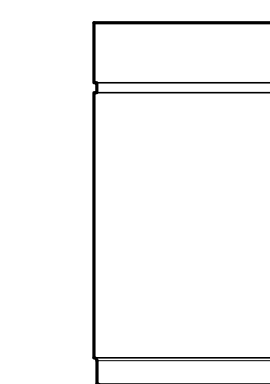
8 INTERIOR ELEVATION UNIT 104  
1/4"=1'-0"



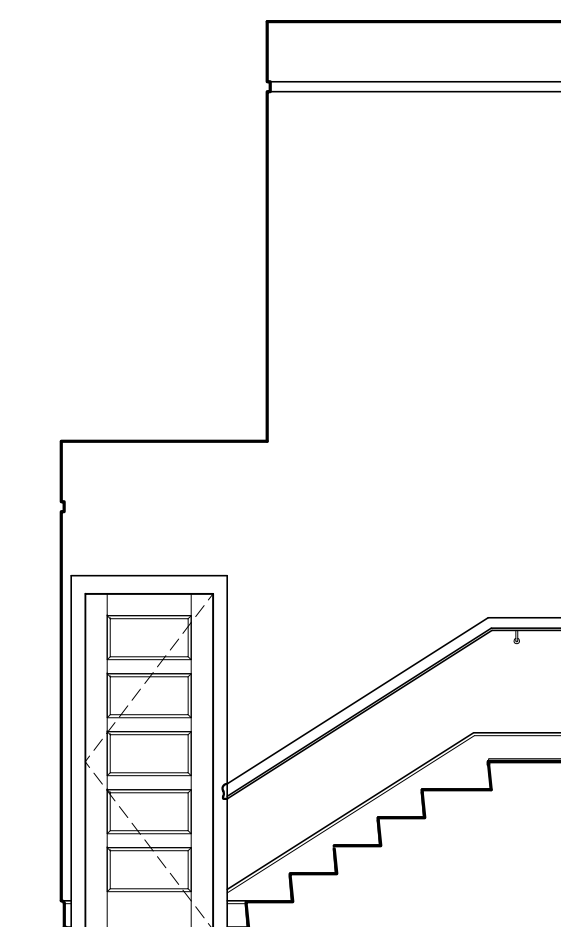
9 INTERIOR ELEVATION UNIT 104  
1/4"=1'-0"



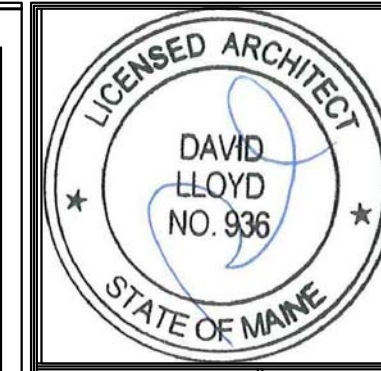
10 INTERIOR ELEVATION UNIT 104  
1/4"=1'-0"



11 INTERIOR ELEVATION UNIT 104  
1/4"=1'-0"



12 INTERIOR ELEVATION UNIT 104  
1/4"=1'-0"



Prepared For:  
**The Inn at Diamond Cove, LLC.**  
PO BOX 3572  
PORTLAND, ME 04101

Interior Designer:  
**truexculins**  
INTERIORS  
208 BATTERY STREET BURLINGTON, VERMONT 05401 USA  
Phone 802.656.2775 800.227.1076  
ARCHITECTURE | INTERIOR DESIGN | truexculins.com

Architect:  
**ARCHETYPE**  
architects  
48 Union Wharf Portland, Maine 04101  
(207) 772-6022 Fax (207) 772-4056

Project:  
**THE INN AT  
DIAMOND COVE,  
LLC**  
McKINLEY COURT  
GREAT DIAMOND ISLAND, MAINE

Revisions:  
Issued for Construction 03 Feb 14

Date: 03 Feb 2014  
Scale: As Noted  
**INTERIOR  
ELEVATIONS UNITS  
104, 132**

**A9.03**