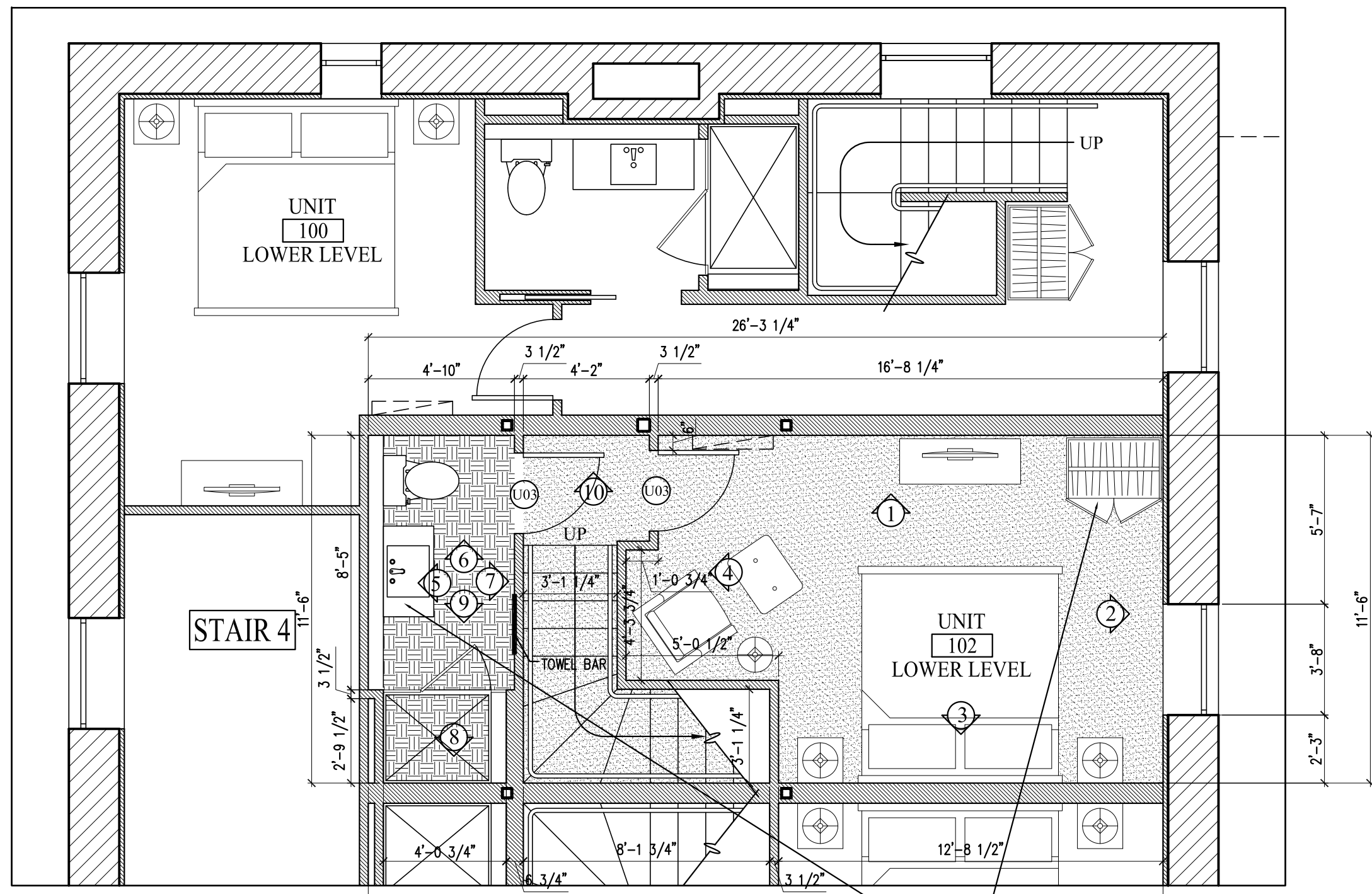


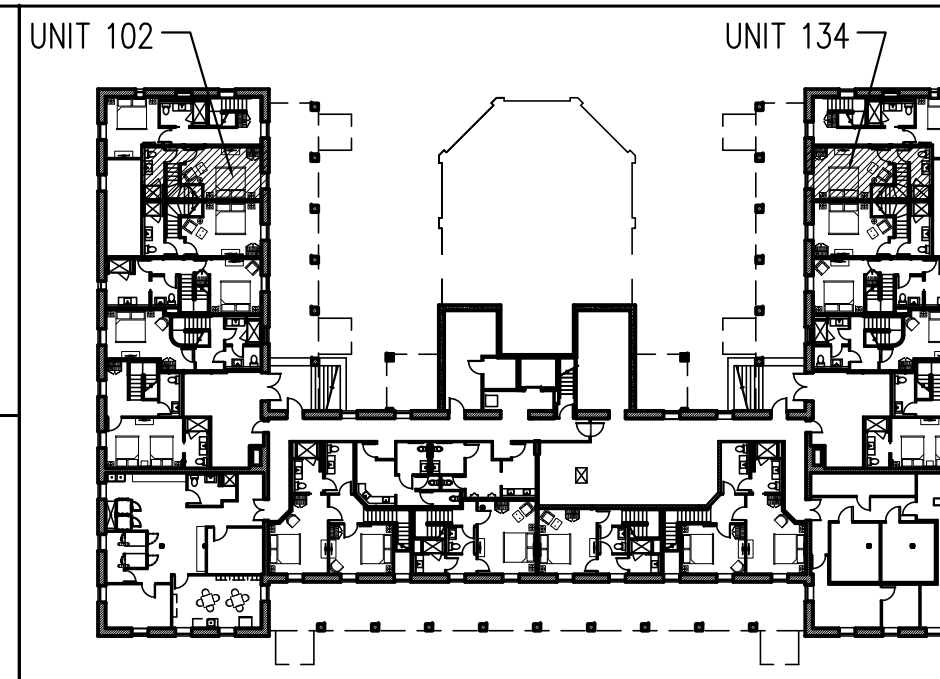
A ENLARGED FLOOR PLAN UNIT 102 FIRST FLOOR
1/4"=1'-0"



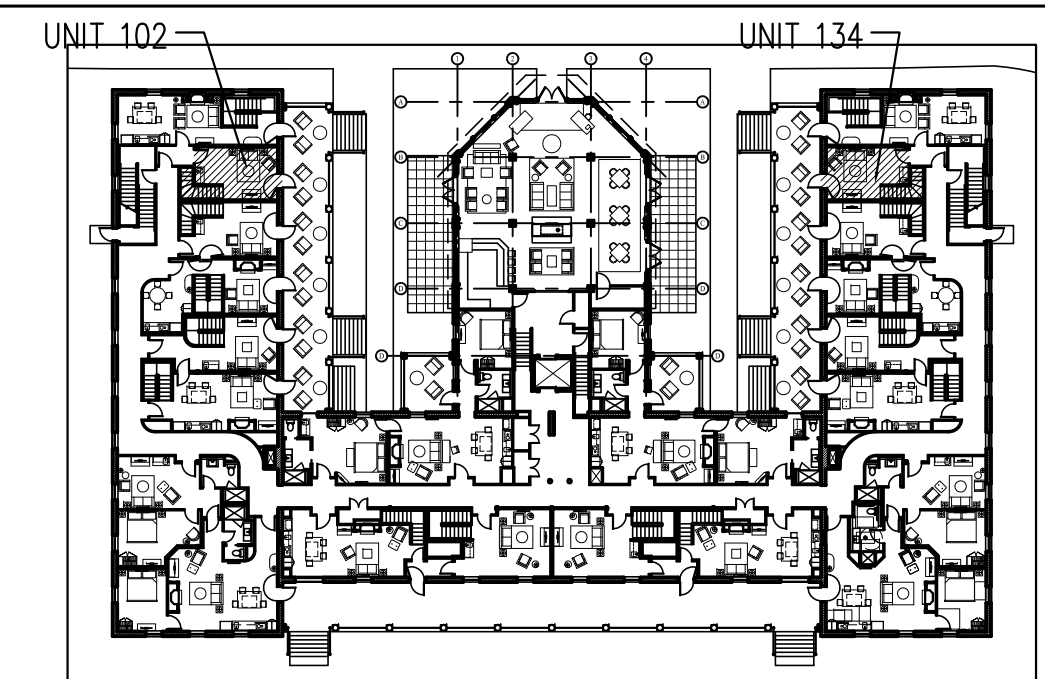
B ENLARGED FLOOR PLAN UNIT 102 BASEMENT
1/4"=1'-0"

- FLOORING LEGEND
- HARDWOOD
 - TILE
 - CARPETING

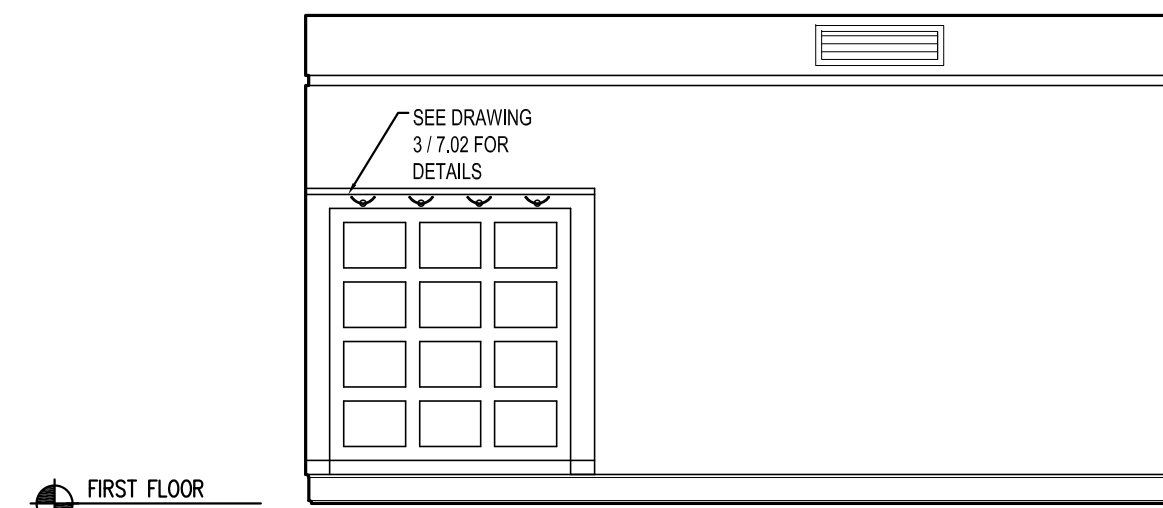
NOTES-
-UNIT 102 SHOWN- 134 IS MIRRORED
-REFER TO 7.02, 9.00, 9.00A AND 9.00B FOR MILLWORK DETAILS



BASEMENT KEY PLAN- NTS

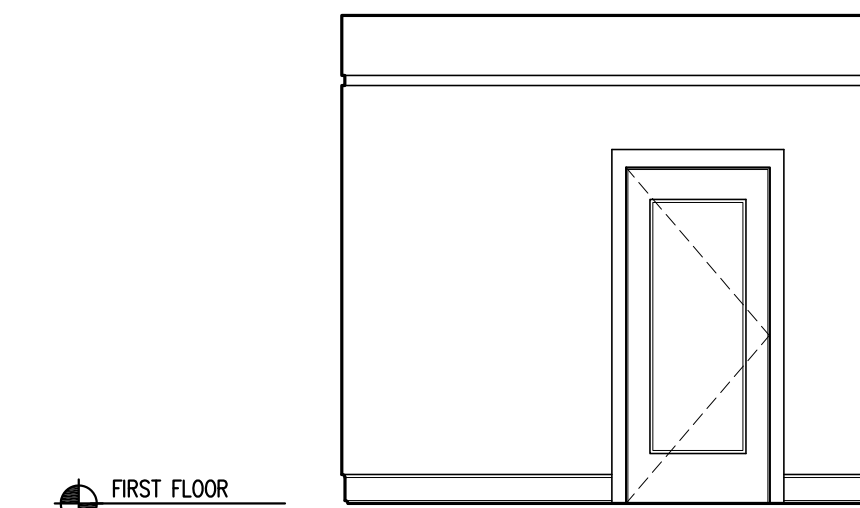


FIRST FLOOR KEY PLAN- NTS



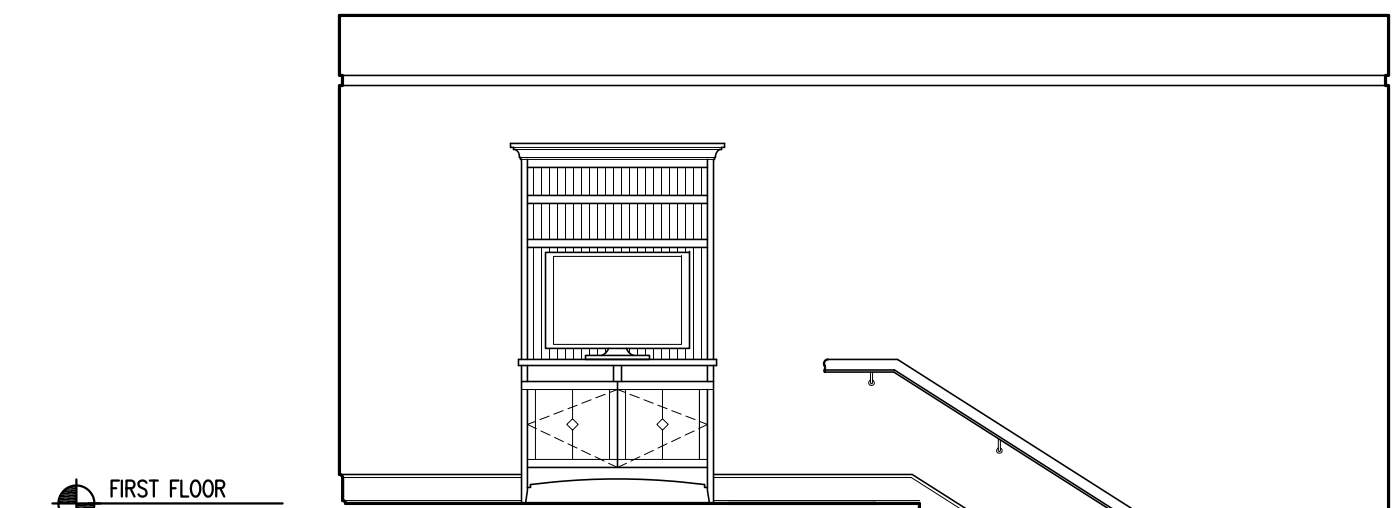
FIRST FLOOR

1 INTERIOR ELEVATION UNIT 102
1/4"=1'-0"



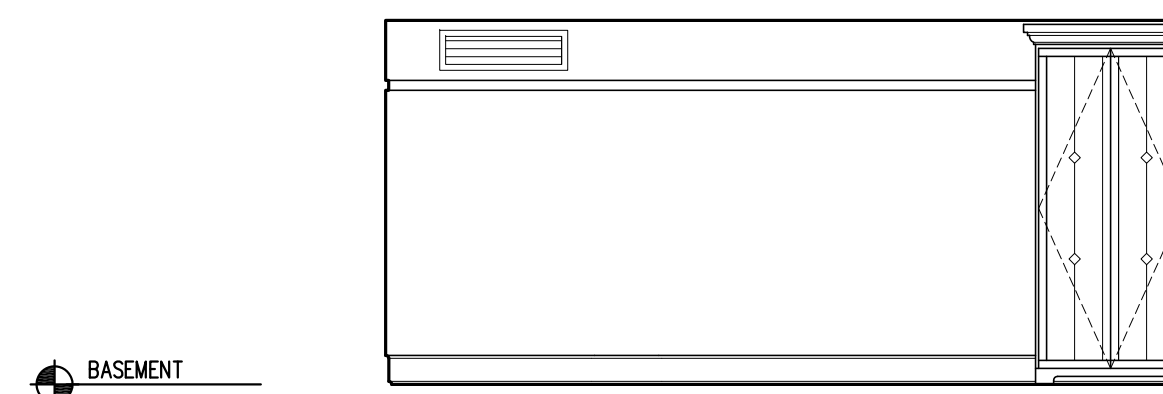
FIRST FLOOR

2 INTERIOR ELEVATION UNIT 102
1/4"=1'-0"



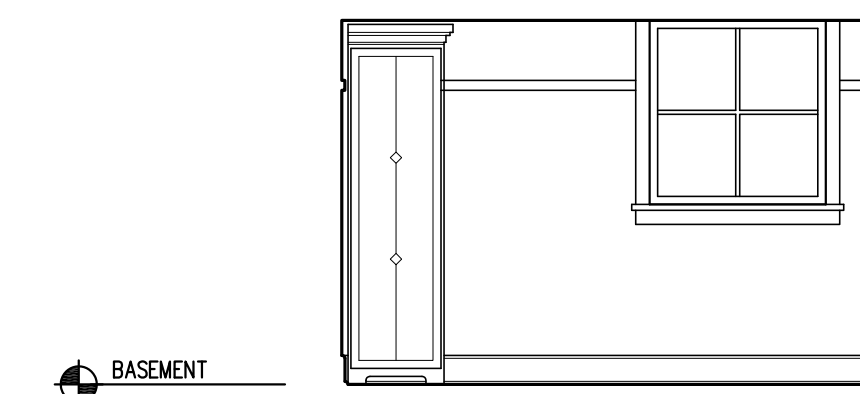
FIRST FLOOR

3 INTERIOR ELEVATION UNIT 102
1/4"=1'-0"



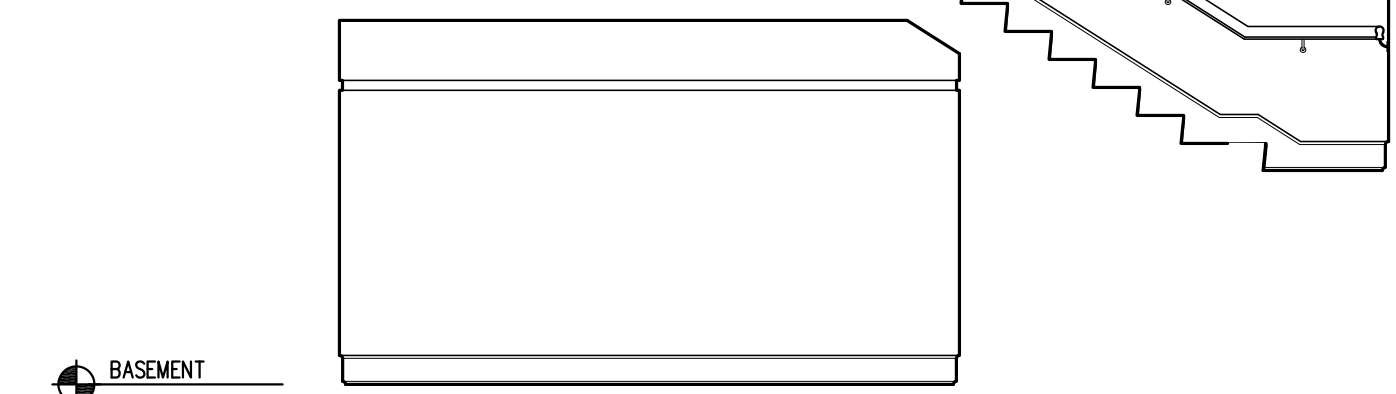
BASEMENT

4 INTERIOR ELEVATION UNIT 102
1/4"=1'-0"



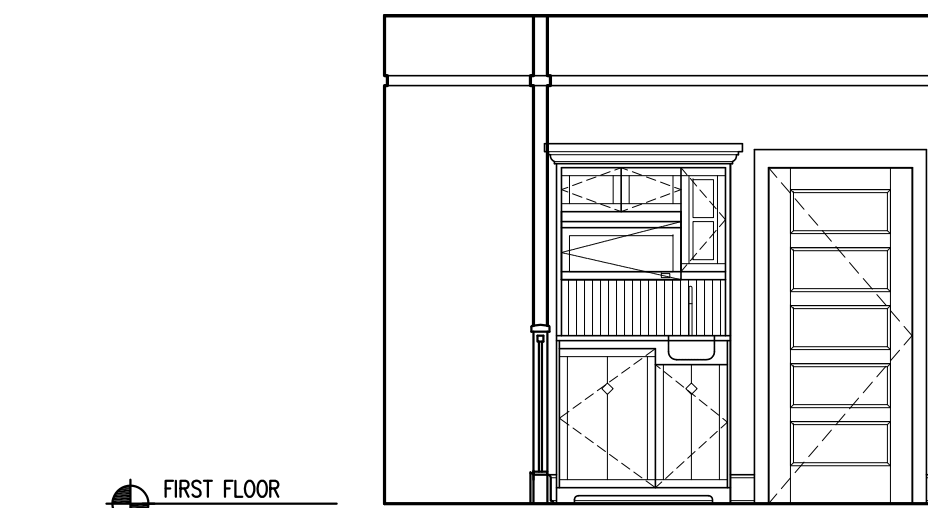
BASEMENT

5 INTERIOR ELEVATION UNIT 102
1/4"=1'-0"



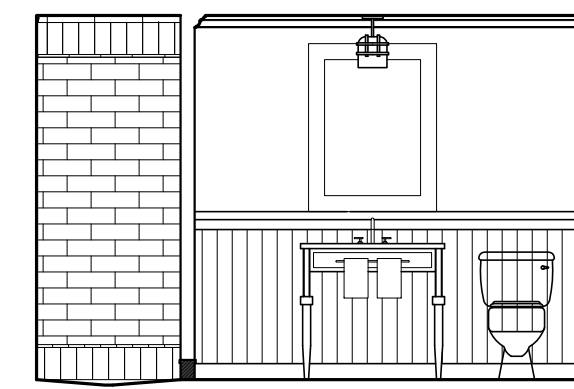
BASEMENT

6 INTERIOR ELEVATION UNIT 102
1/4"=1'-0"

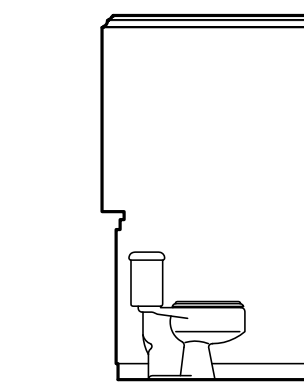


FIRST FLOOR

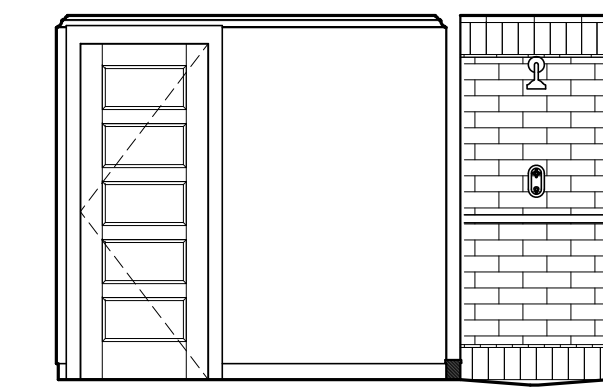
7 INTERIOR ELEVATION UNIT 102
1/4"=1'-0"



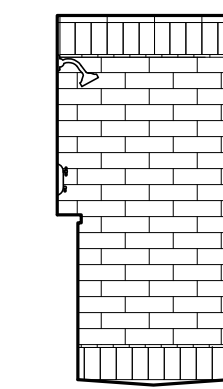
8 INTERIOR ELEVATION UNIT 102
1/4"=1'-0"



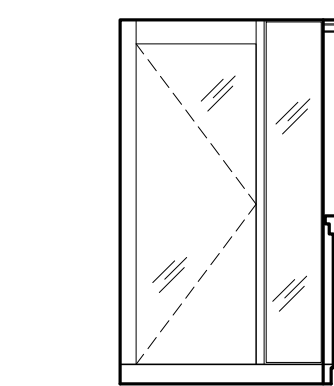
9 INTERIOR ELEVATION UNIT 102
1/4"=1'-0"



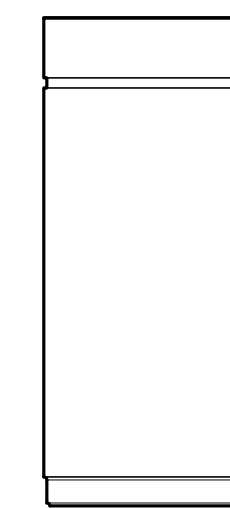
10 INTERIOR ELEVATION UNIT 102
1/4"=1'-0"



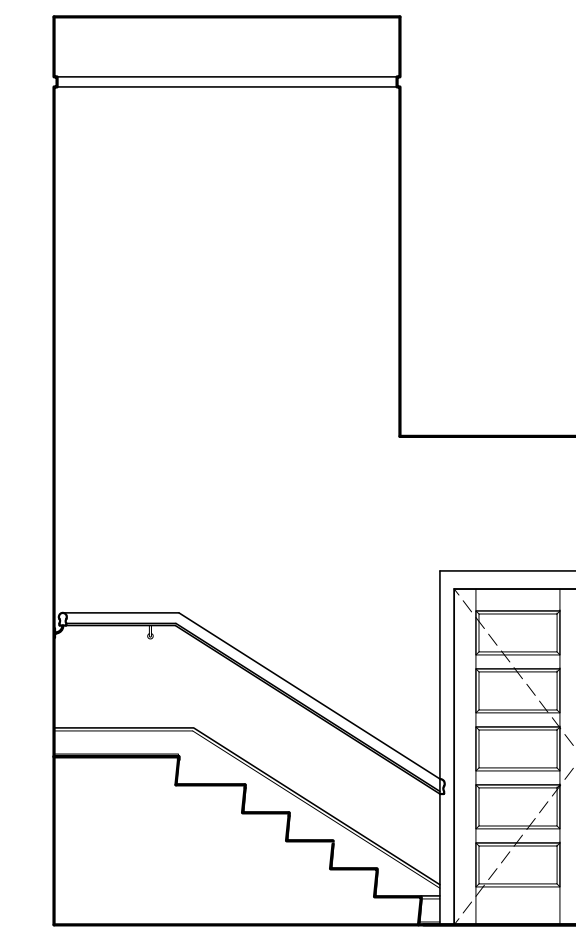
11 INTERIOR ELEVATION UNIT 102
1/4"=1'-0"



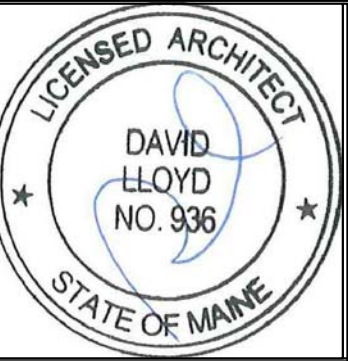
12 INTERIOR ELEVATION UNIT 102
1/4"=1'-0"



13 INTERIOR ELEVATION UNIT 102
1/4"=1'-0"



14 INTERIOR ELEVATION UNIT 102
1/4"=1'-0"



Prepared For:
The Inn at Diamond Cove, LLC.
PO BOX 3572
PORTLAND, ME 04101

Interior Designer:
truexculins
INTERIORS
208 BATTERY STREET BURLINGTON, VERMONT 05401 USA
Phone 802.656.2775 800.227.1076
ARCHITECTURE | INTERIOR DESIGN | truexculins.com

Architect:
ARCHETYPE
architects
48 Union Wharf Portland, Maine 04101
(207) 772-6022 Fax (207) 772-4056

Project:
THE INN AT DIAMOND COVE, LLC
McKINLEY COURT
GREAT DIAMOND ISLAND, MAINE

Revisions:
Issued for Construction 03 Feb 14

Date: 03 Feb 2014
Scale: As Noted
INTERIOR ELEVATIONS UNITS 102, 134

A9.02