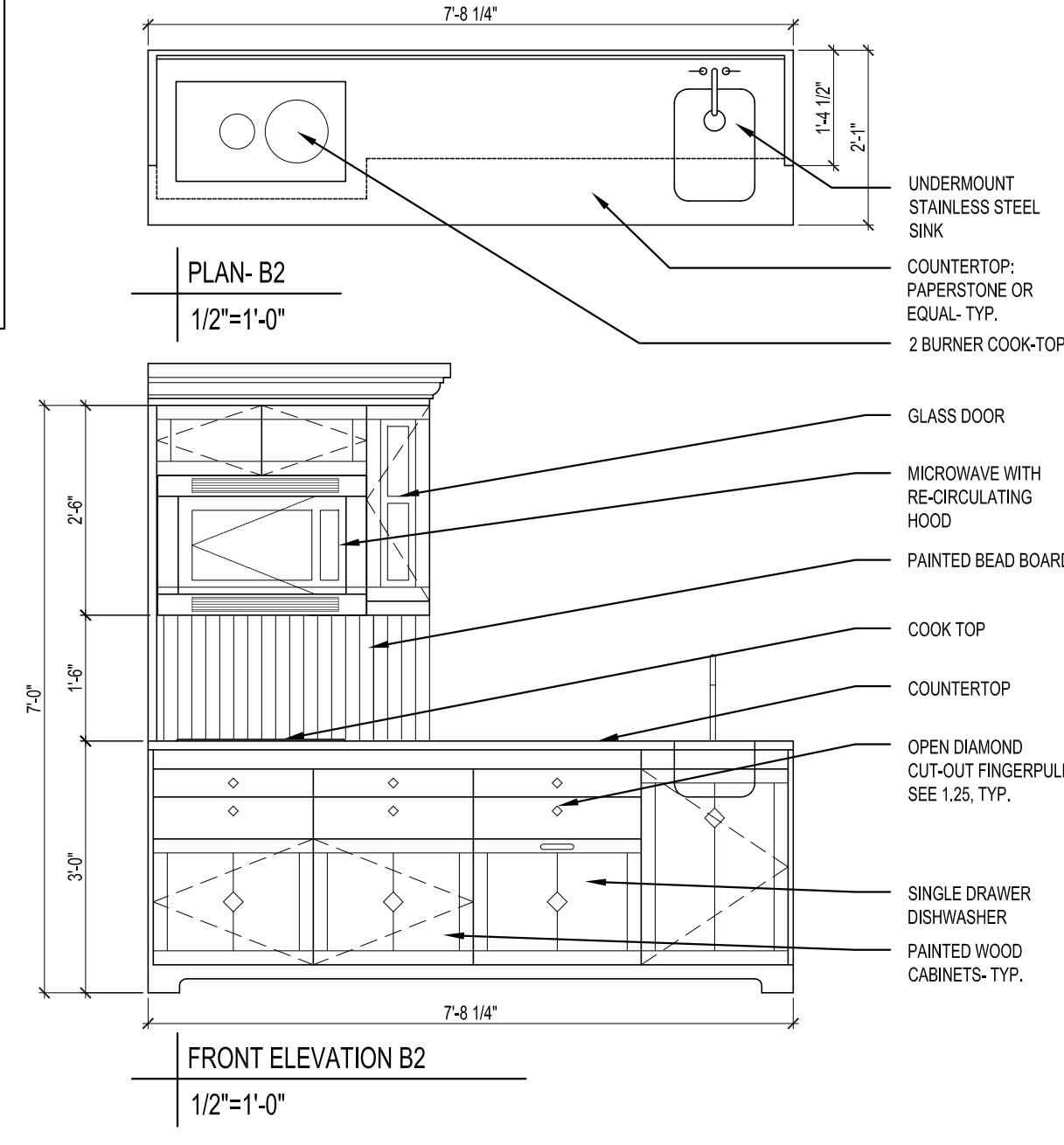


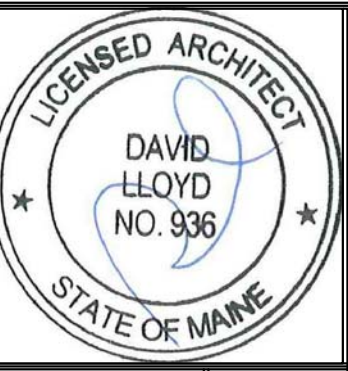
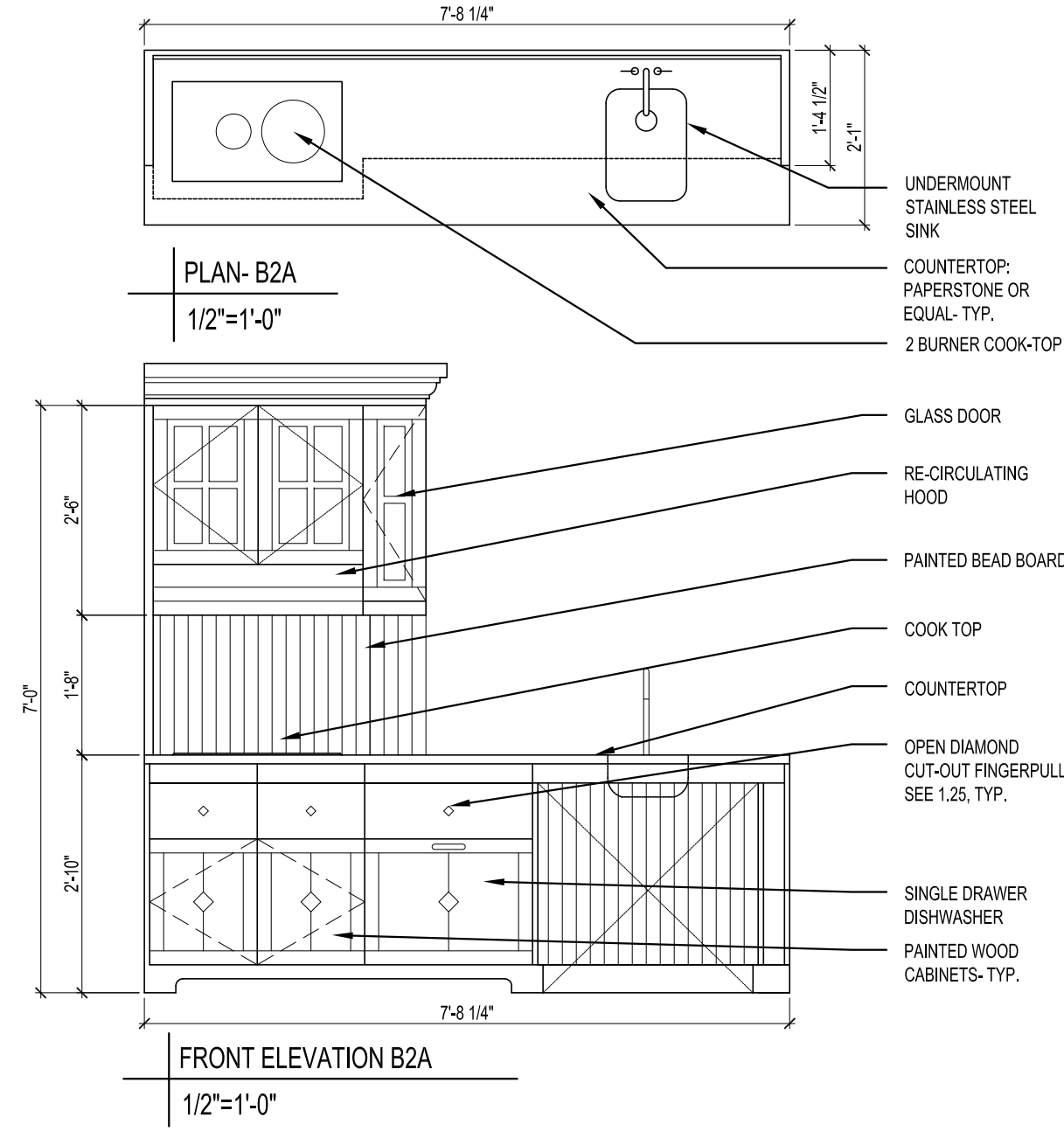
B2 PROGRAM:

- 1-BOWL SINK
- 1 2-BURNER COOK-TOP
- 1 RE-CIRCULATING HOOD
- 1 1-DRAWER DISHWASHER
- PLACE SETTINGS FOR 8
- 2 POTS
- 2 PANS
- KETTLE
- COFFEE MAKER



B2A PROGRAM:

- 1-BOWL SINK
- 1 2-BURNER COOK-TOP
- 1 RE-CIRCULATING HOOD
- 1 1-DRAWER DISHWASHER
- PLACE SETTINGS FOR 8
- 2 POTS
- 2 PANS
- KETTLE
- COFFEE MAKER



Prepared For:
The Inn at Diamond Cove, LLC.
PO BOX 3572
PORTLAND, ME 04101

Interior Designer:
truexculins
INTERIORS
208 BATTERY STREET BURLINGTON, VERMONT 05401 USA
Phone 802.656.2775 800.227.1076
ARCHITECTURE | INTERIOR DESIGN | truexculins.com

Architect:
ARCHETYPE
architects
48 Union Wharf Portland, Maine 04101
(207) 772-6022 Fax (207) 772-4056

Project:
THE INN AT DIAMOND COVE, LLC
McKINLEY COURT
GREAT DIAMOND ISLAND, MAINE

Revisions:
Issued for Construction 03 Feb 14

Date: 03 Feb 2014
Scale: As Noted
MILLWORK DETAILS

A9.00B