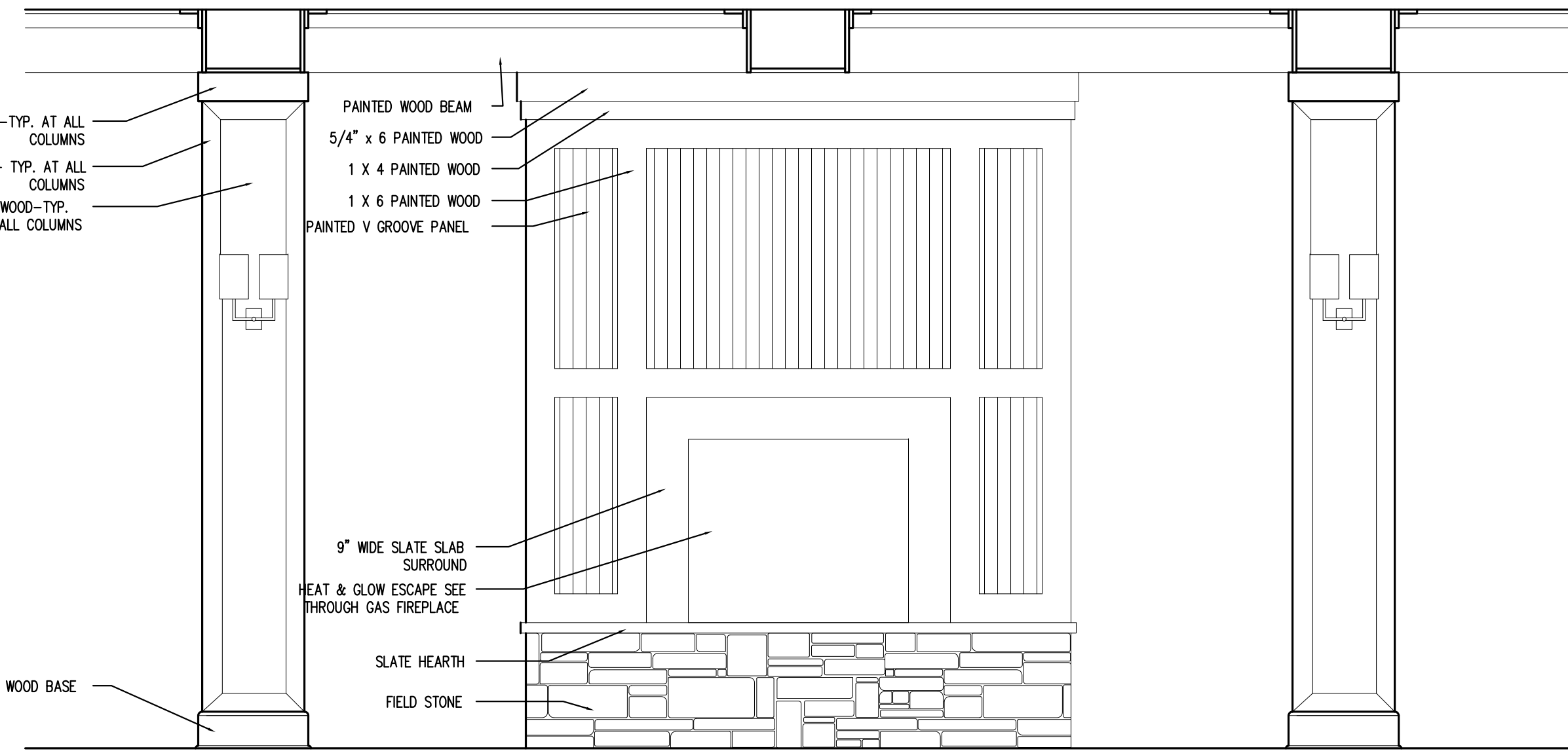
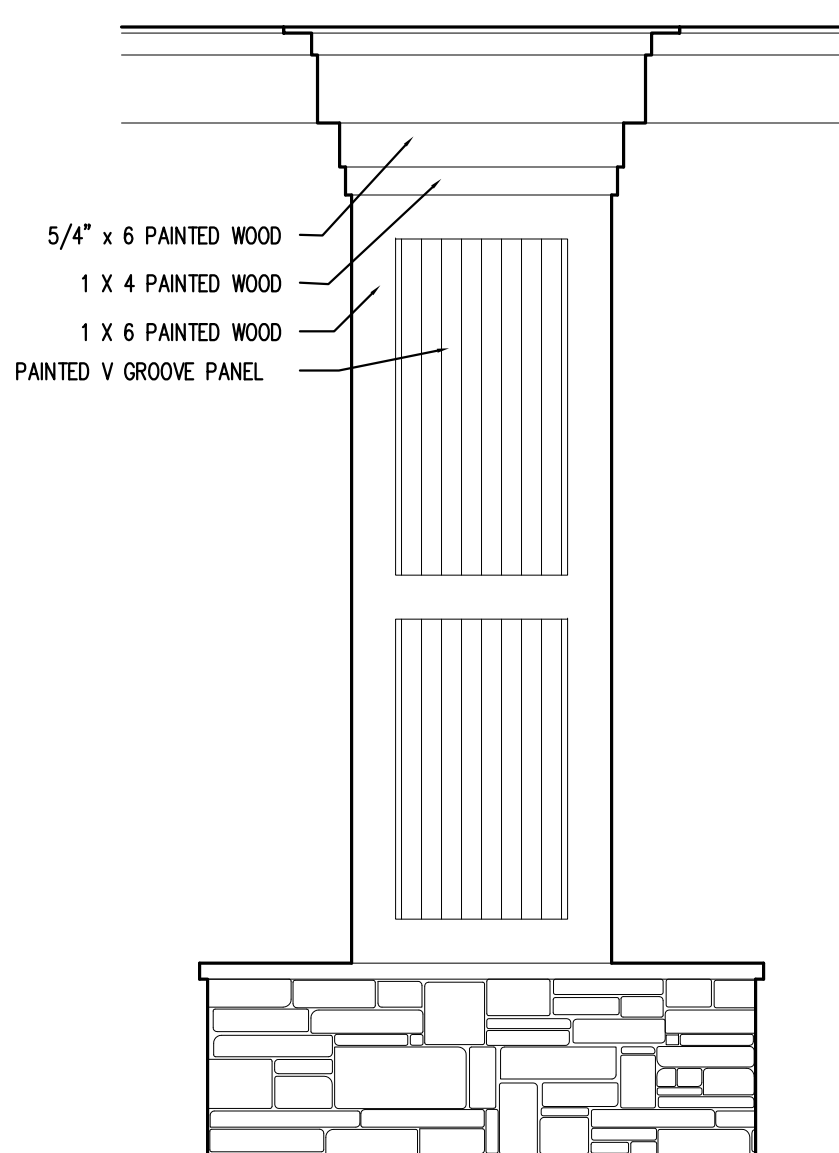


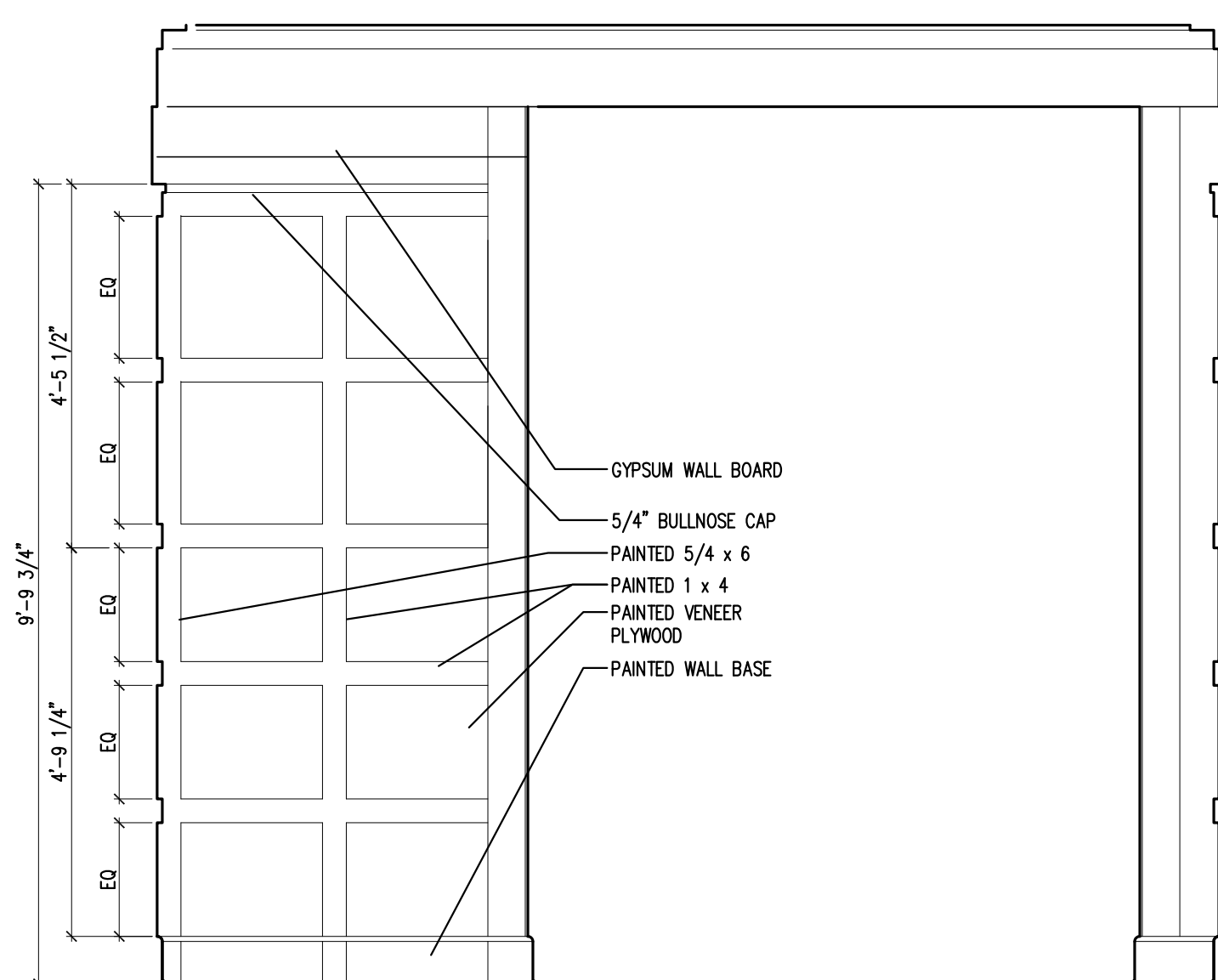
8 INTERIOR ELEVATION AT LOBBY
1/2"=1'-0"



9 INTERIOR ELEVATION AT FIREPLACE
1/2"=1'-0"



10 INTERIOR ELEVATION AT SIDE OF LOBBY FIREPLACE
1/2"=1'-0"

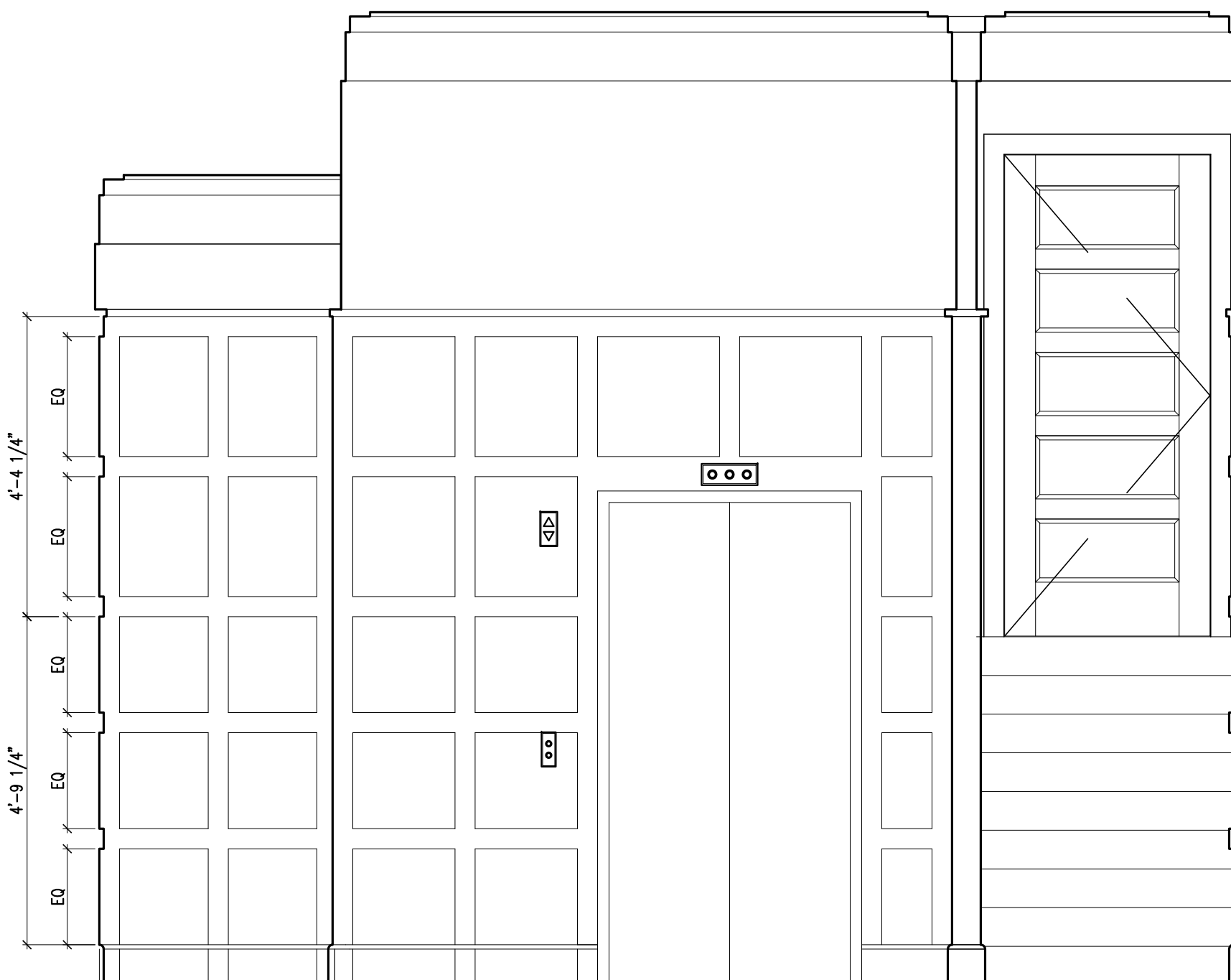
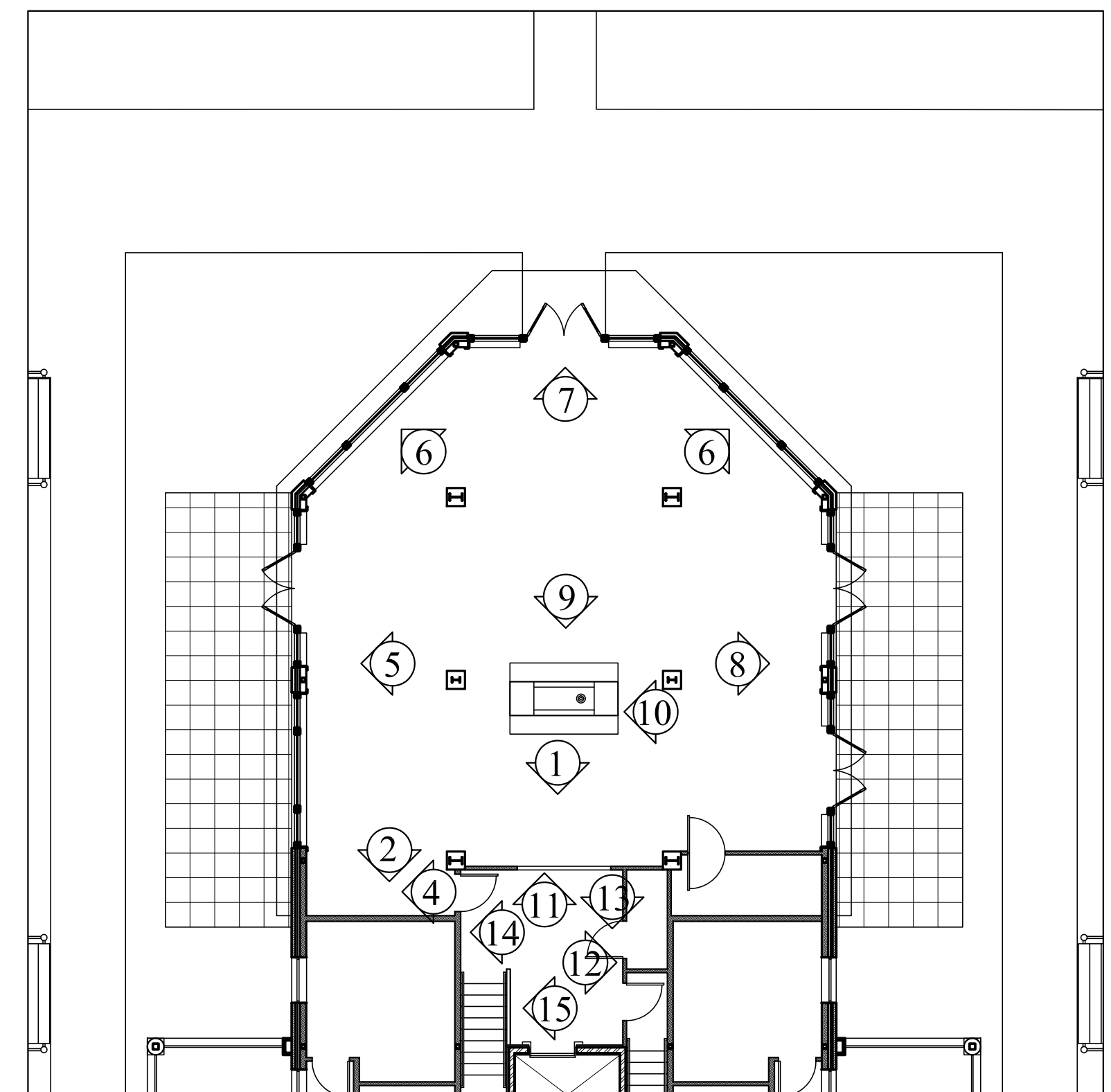


11 INTERIOR ELEVATION AT ELEVATOR LOBBY
1/2"=1'-0"

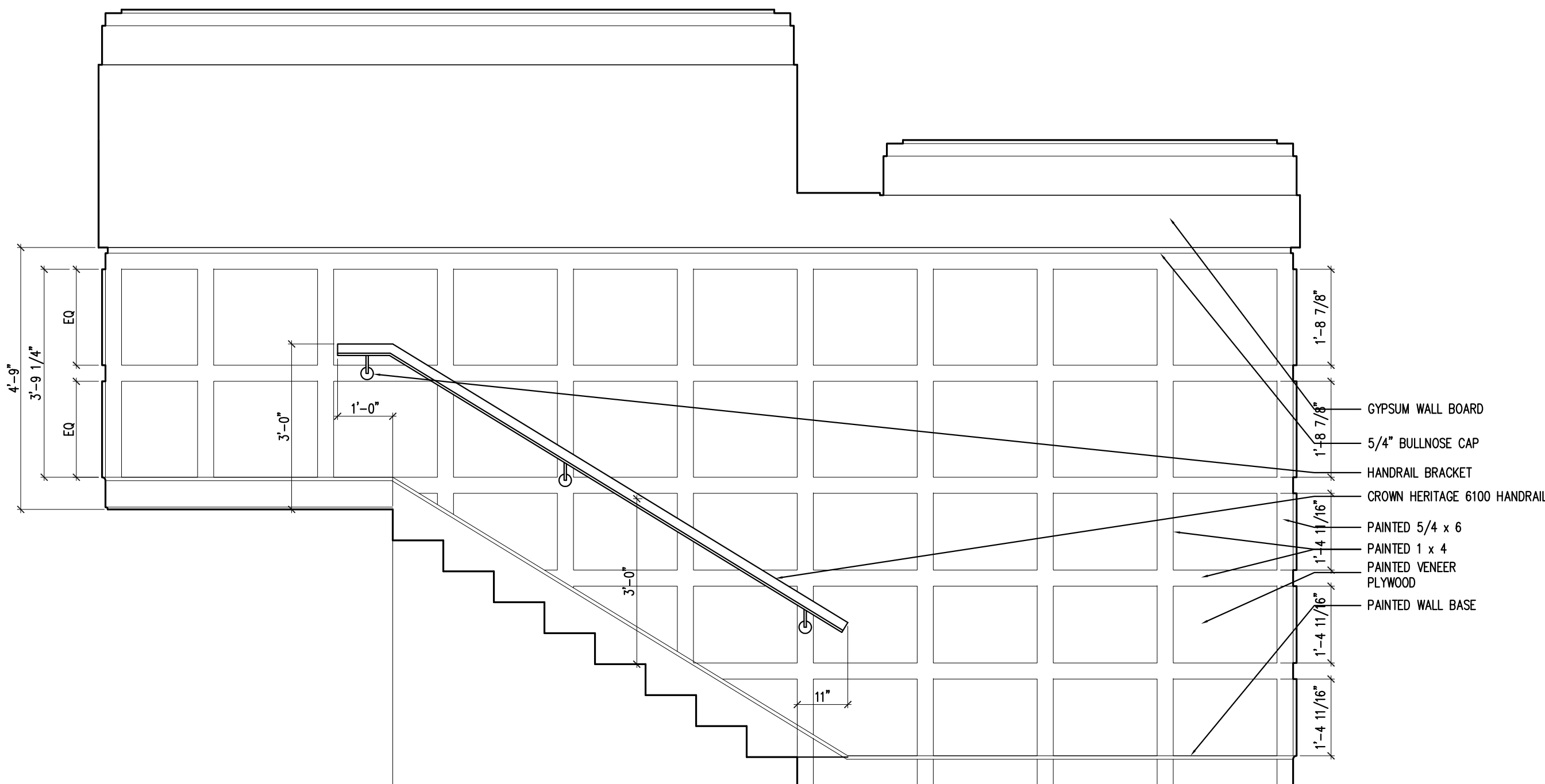


12 INTERIOR ELEVATION AT ELEVATOR LOBBY
1/2"=1'-0"

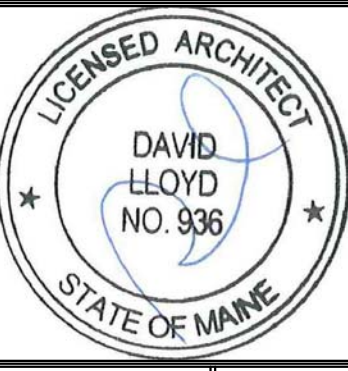
KEY PLAN : NTS



13 INTERIOR ELEVATION AT ELEVATOR LOBBY
1/2"=1'-0"



14 INTERIOR ELEVATION AT ELEVATOR LOBBY
1/2"=1'-0"



Prepared For:
The Inn at Diamond Cove, LLC.
PO BOX 3572
PORTLAND, ME 04101

Interior Designer:
truexculins
INTERIORS
289 BATHY STREET BATHSTON, VERMONT 05451, USA
Phone 802.658.2775 Fax 800.227.1076
ARCHITECTURE | INTERIOR DESIGN | truexculins.com

Architect:
ARCHETYPE
architects
48 Union Wharf Portland, Maine 04101
(207) 772-6022 Fax (207) 772-4056

Project:
THE INN AT DIAMOND COVE, LLC
McKINLEY COURT
GREAT DIAMOND ISLAND, MAINE

Revisions:
Issued for Construction 03 Feb 14

Date: 03 Feb 2014
Scale: AS NOTED
LOBBY INTERIOR ELEVATIONS

A7.01