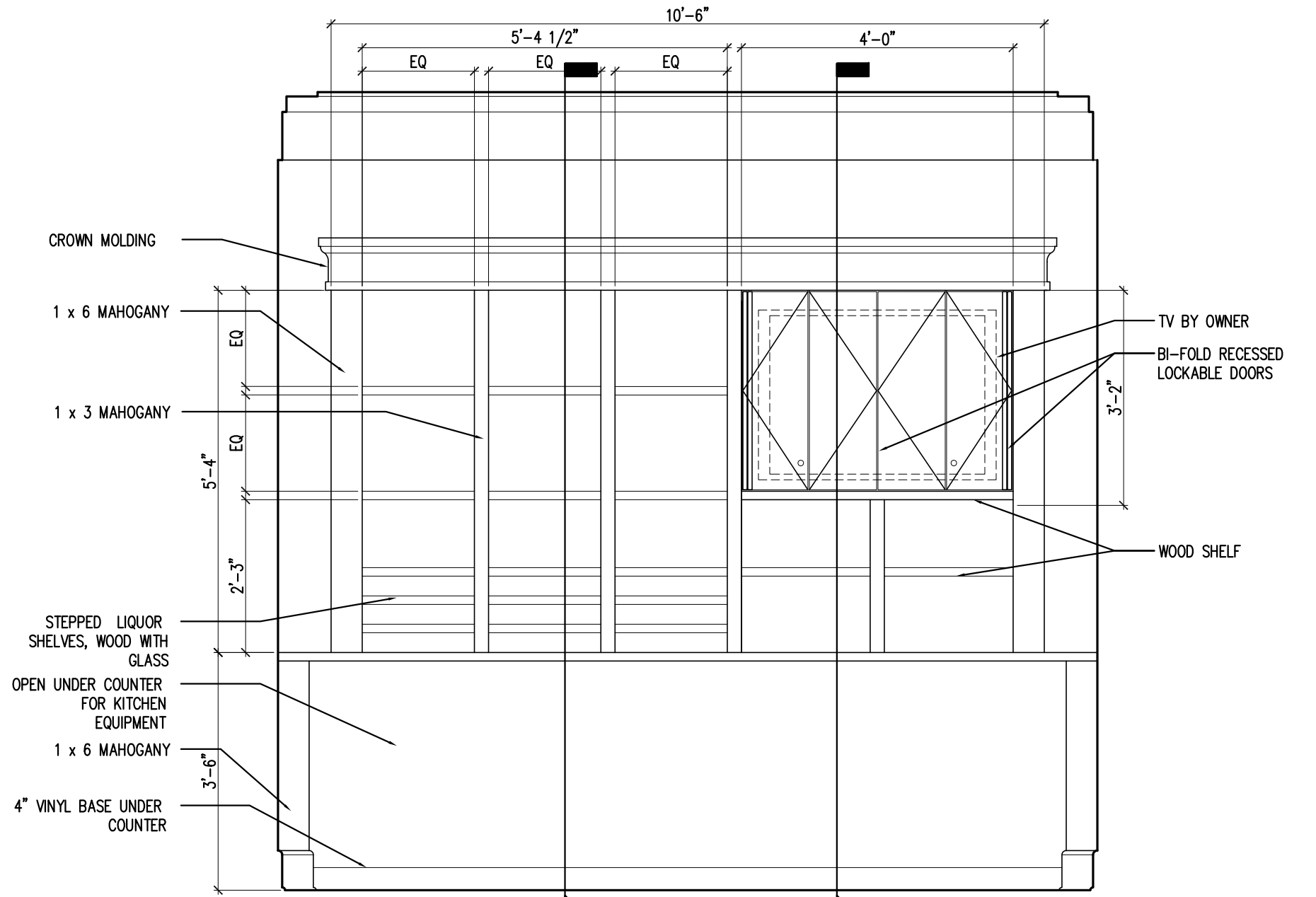
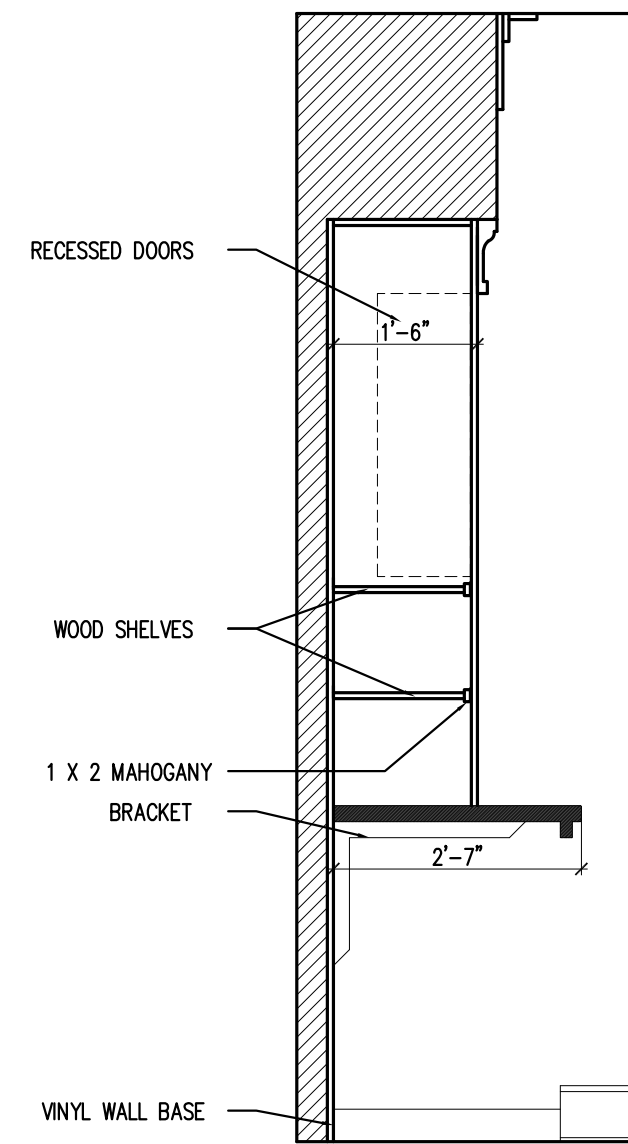


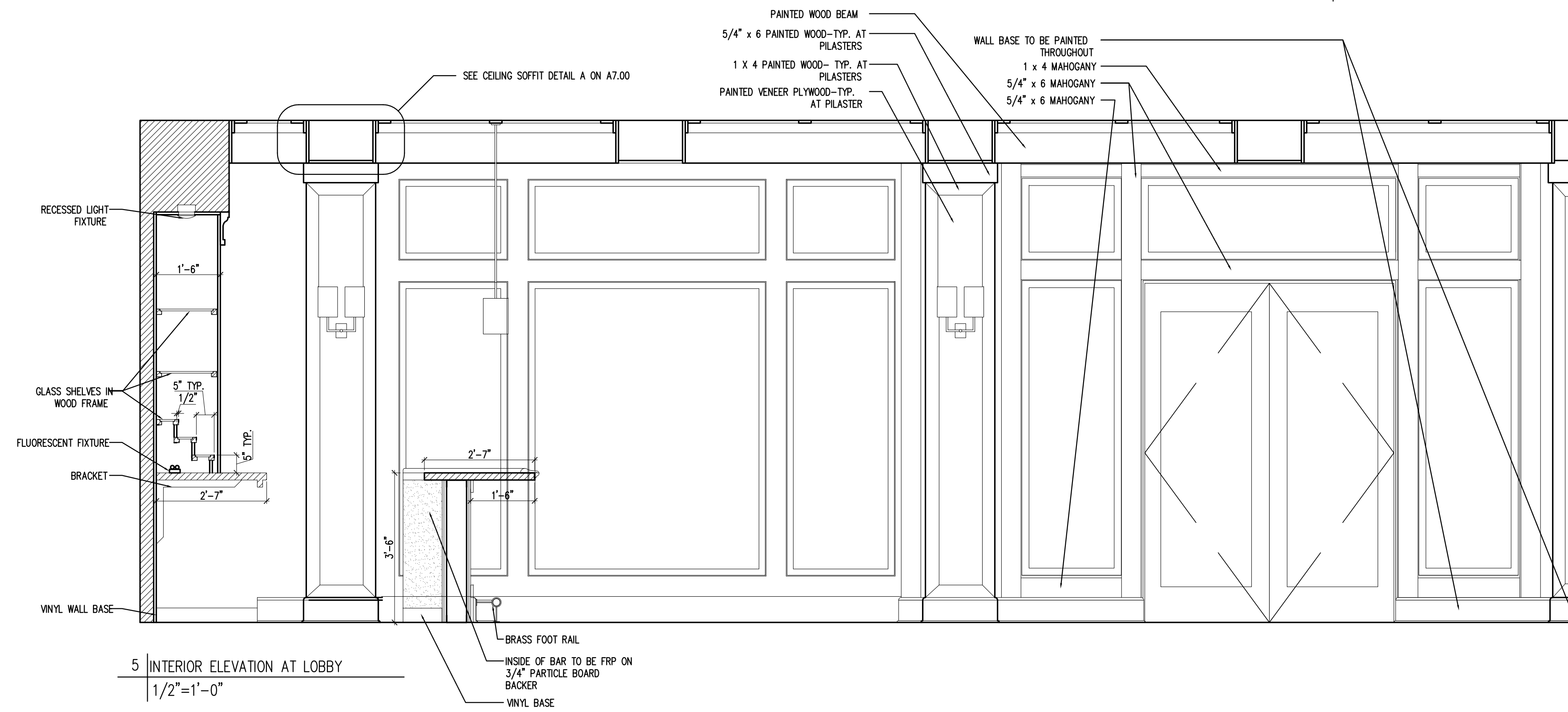
1 INTERIOR ELEVATION AT LOBBY  
1/2"=1'-0"



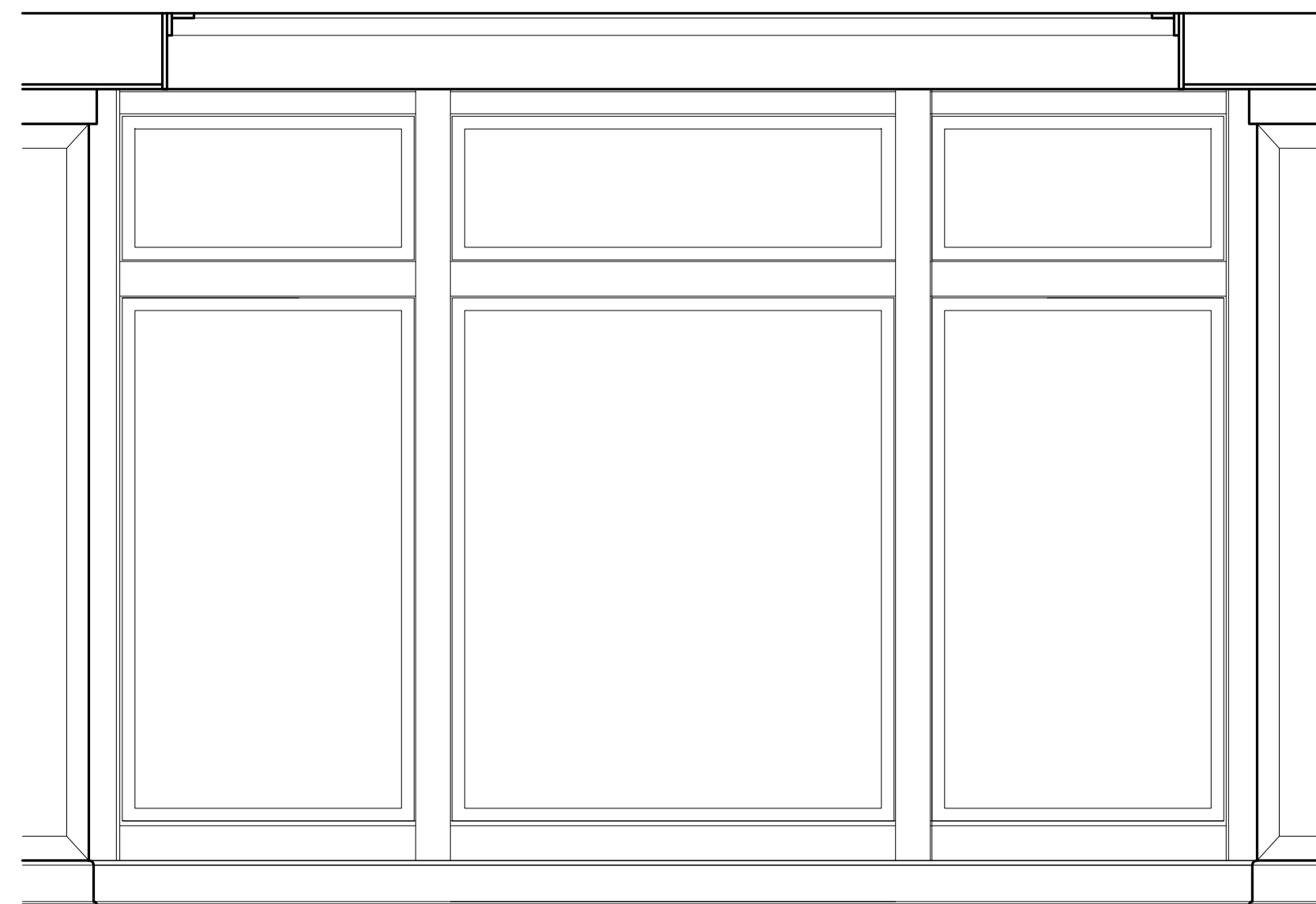
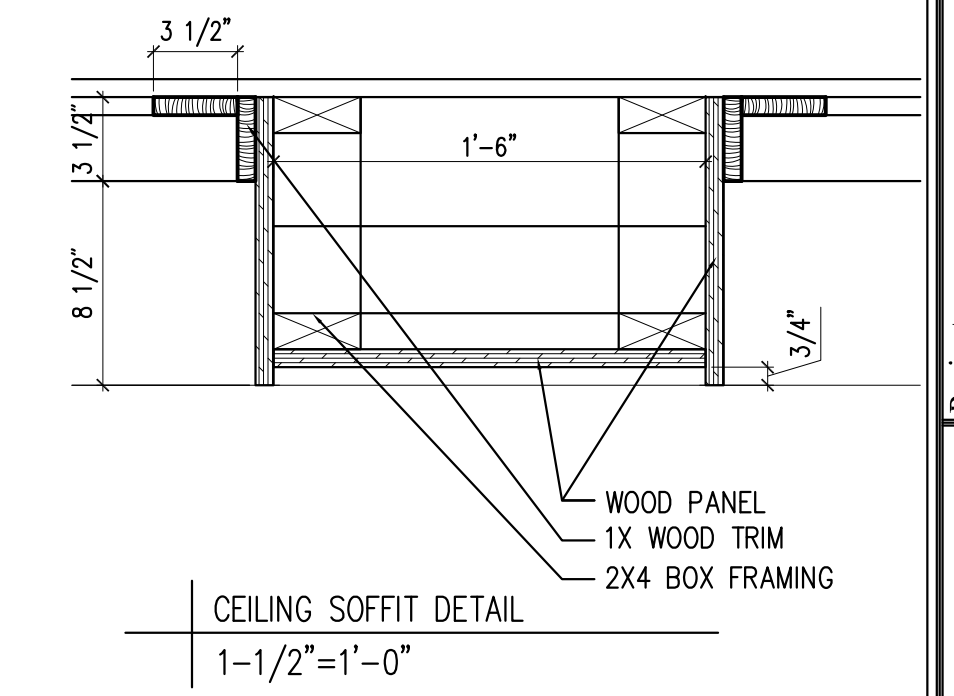
2 INTERIOR ELEVATION AT BACK BAR  
1/2"=1'-0"



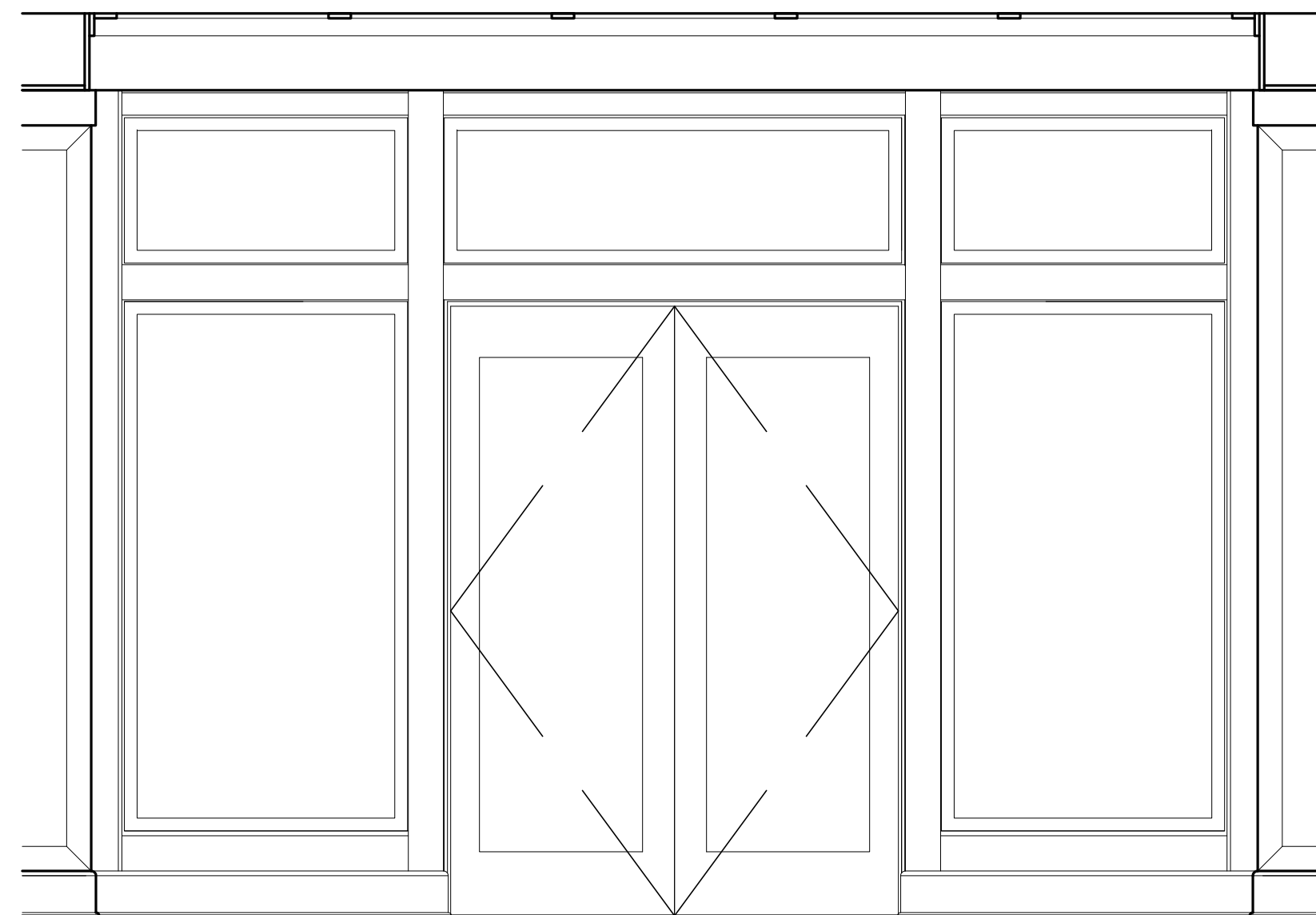
4 SECTION AT BACK BAR  
1/2"=1'-0"



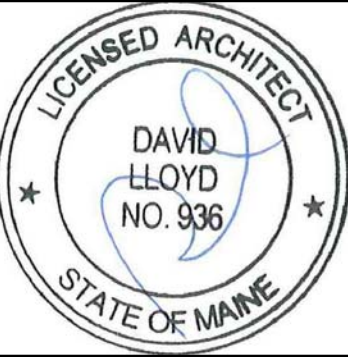
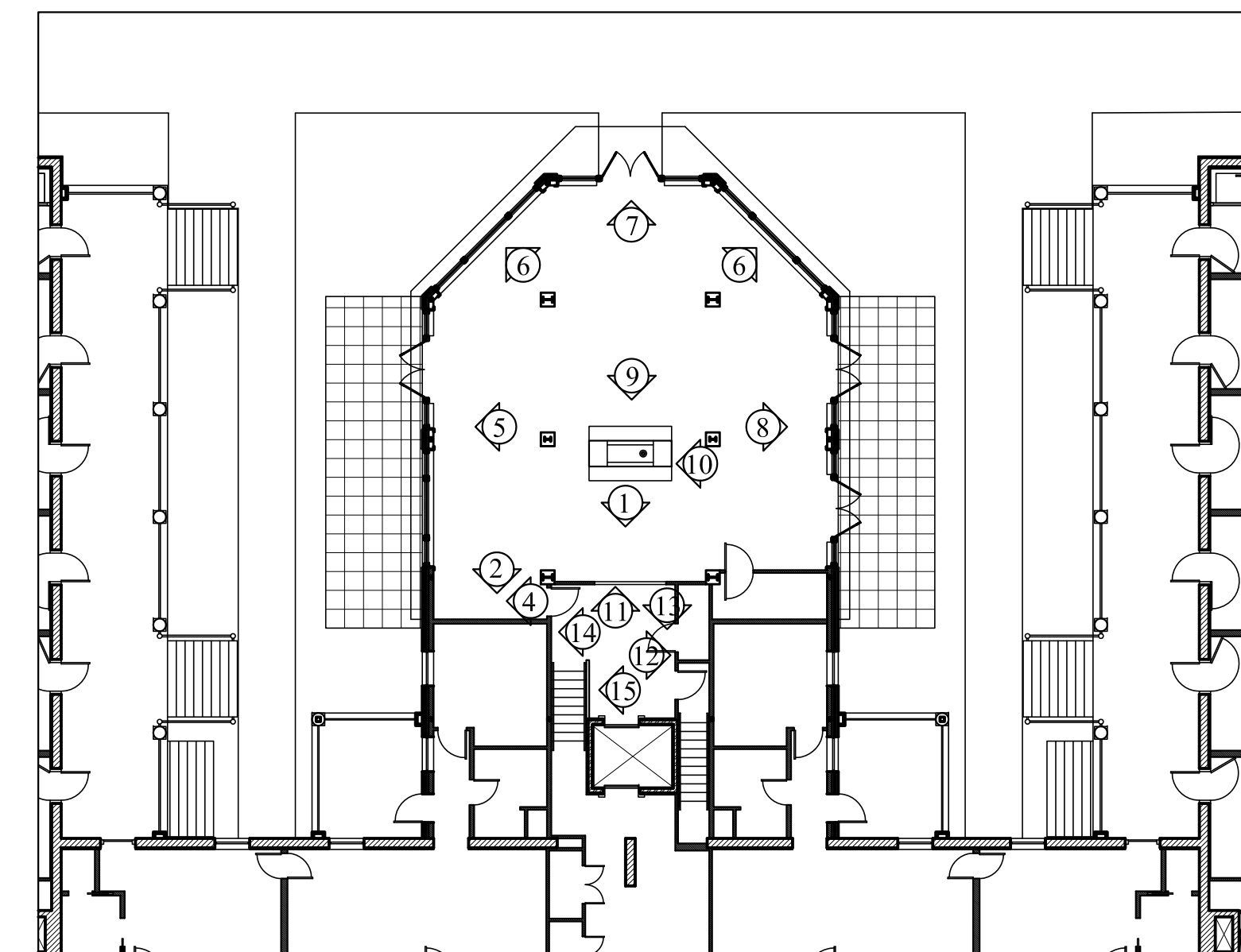
5 INTERIOR ELEVATION AT LOBBY  
1/2"=1'-0"



6 INTERIOR ELEVATION AT LOBBY  
1/2"=1'-0"



7 INTERIOR ELEVATION AT LOBBY  
1/2"=1'-0"



Prepared For:  
**The Inn at Diamond Cove, LLC.**  
PO BOX 3572  
PORTLAND, ME 04101

Interior Designer:  
**truexculins**  
INTERIORS  
288 BATTERY STREET BOSTON, VERMONT 05401, USA  
Phone 802.658.2775 • 800.227.1076  
ARCHITECTURE | INTERIOR DESIGN | TRUEXCULINS.COM

Architect:  
**ARCHETYPE**  
architects  
48 Union Wharf Portland, Maine 04101  
(207) 772-6022 Fax (207) 772-4056

Project:  
**THE INN AT DIAMOND COVE, LLC**  
McKINLEY COURT  
GREAT DIAMOND ISLAND, MAINE

Revisions:  
Issued for Construction 03 Feb 14

Date: 03 Feb 2014  
Scale: AS NOTED  
**LOBBY INTERIOR ELEVATIONS**

**A7.00**