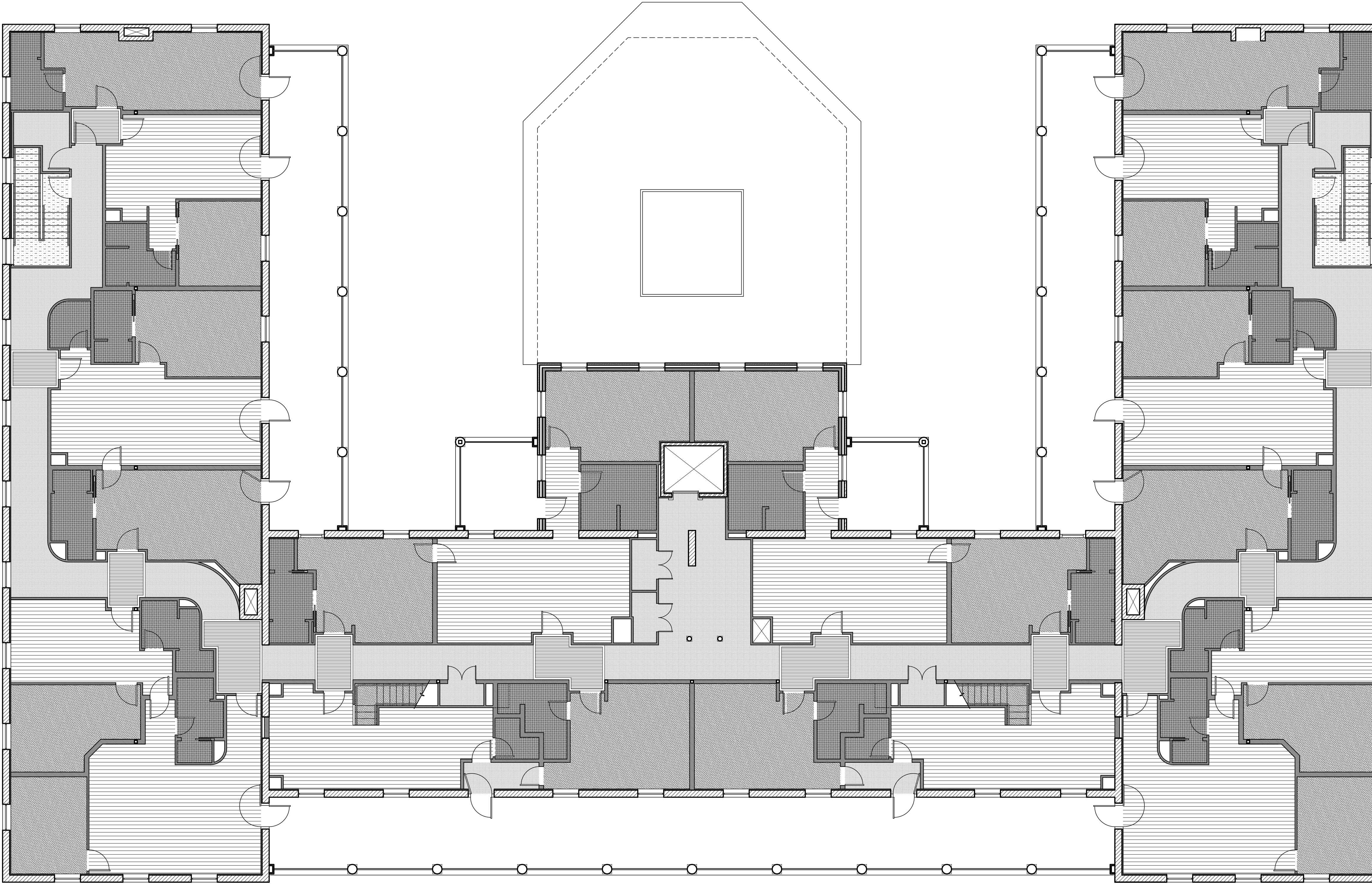
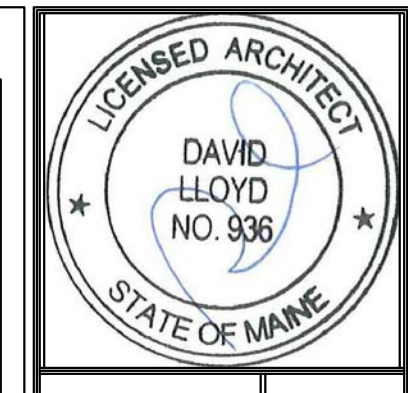
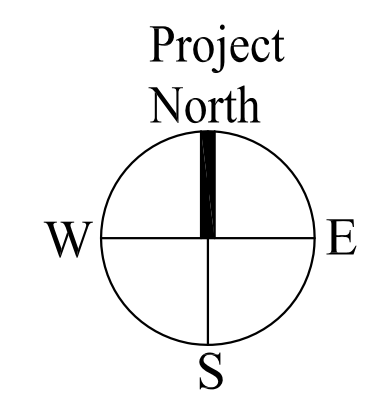


LEGEND:

	HARDWOOD
	TILE
	CARPETING
	PUBLIC SPACE CARPETING
	EGRESS STAIR CARPETING
	SHAW HARD SURFACE STYLE 0186V QUIET COVER



1 | SECOND FLOOR FINISH SCHEDULE  
SCALE: 1/8"=1'-0"



Prepared For:  
**The Inn at Diamond  
Cove, LLC.**  
PO BOX 3572  
PORTLAND, ME 04101

Interior Designer:  
**truexcollins**  
INTERIORS  
298 BATTERY STREET BURLINGTON, VERMONT 05401 USA  
Phone 802.656.2775 • 800.227.1076  
ARCHITECTURE | INTERIOR DESIGN | truexcollins.com

Architect:  
**ARCHETYPE**  
architects  
48 Union Wharf Portland, Maine 04101  
(207) 772-6022 Fax (207) 772-4056

Project:  
**THE INN AT  
DIAMOND COVE,  
LLC**  
MCKINLEY COURT  
GREAT DIAMOND ISLAND, MAINE

Revisions:

Issued for Construction 03 Feb 14

Date: 03 Feb 2014  
Scale: 1/8" = 1'-0"  
**SECOND FLOOR  
FLOOR FINISH  
SCHEDULE**

**A6.12**