

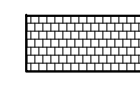

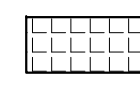
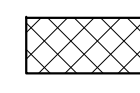
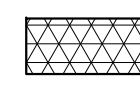
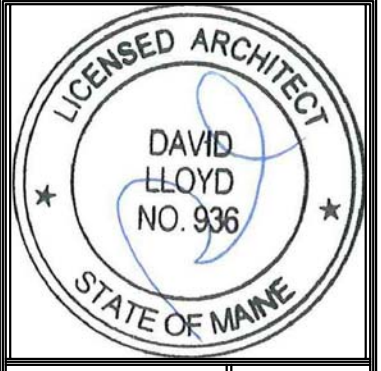


LEGEND:

	TILE
	CARPETING
	PUBLIC SPACE TILE
	PUBLIC SPACE CARPETING
	COMMERCIAL KITCHEN QUARRY TILES
	SLAB ON GRADE
	VCT



Prepared For:
The Inn at Diamond Cove, LLC.
 PO BOX 3572
 PORTLAND, ME 04101

Interior Designer:
truexcollins
 INTERIORS
 299 BATTERY STREET BURLINGTON, VERMONT 05401 USA
 Phone 802.656.2775 • 800.227.1076
 ARCHITECTURE | INTERIOR DESIGN | truexcollins.com

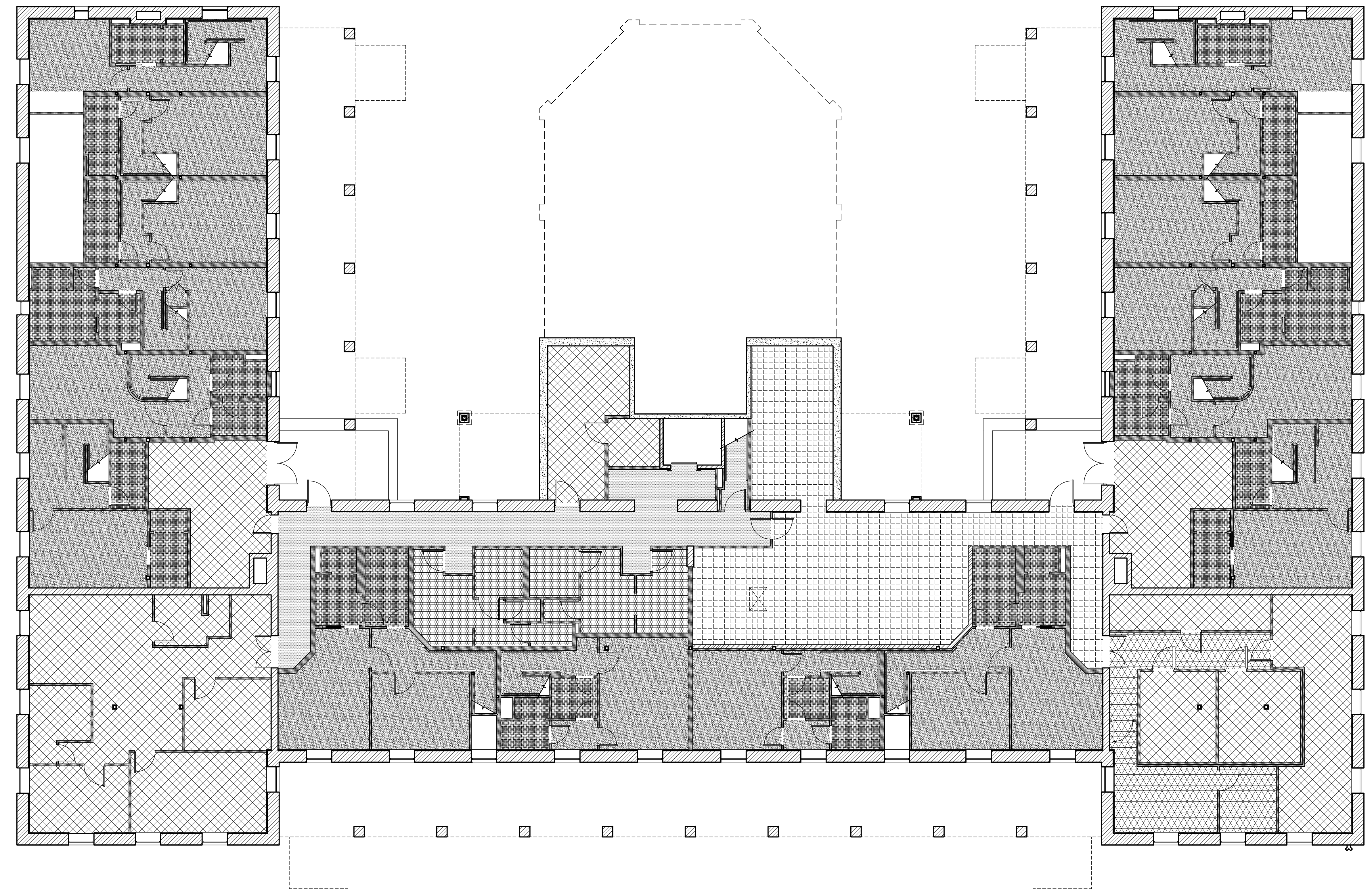
Architect:
ARCHETYPE
 architects
 48 Union Wharf Portland, Maine 04101
 (207) 772-6022 Fax (207) 772-4056

Project:
THE INN AT DIAMOND COVE, LLC
 MCKINLEY COURT
 GREAT DIAMOND ISLAND, MAINE

Revisions:
 Issued for Construction 03 Feb 14

Date: 03 Feb 2014
 Scale: 1/8" = 1'-0"
BASEMENT FLOOR FINISH SCHEDULE

A6.10



1 | BASEMENT FLOOR FINISH SCHEDULE
 SCALE: 1/8"=1'-0"

