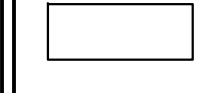
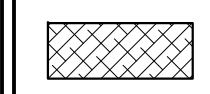
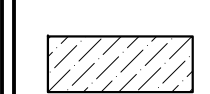
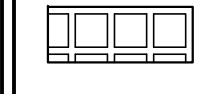

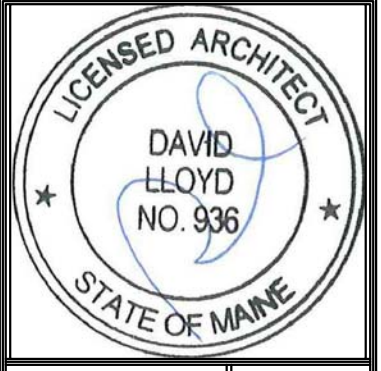


- LEGEND:**
-  GYP CEILING ON STRAPPING ATTACHED DIRECTLY TO STRUCTURE
  -  SUSP. GYP CEILING ON AT 10'-10" A.F.F. (EXCEPT WHERE NOTED) (FIRE RATED GYP. CLNG. CONT. ABOVE AT STRUCTURE)
  -  SUSP. GYP CEILING AT 8'-0" A.F.F. (FIRE RATED GYP. CLNG. CONT. ABOVE AT STRUCTURE)
  -  SUSP. GYP CEILING AT 11'-2" A.F.F. (EXCEPT WHERE NOTED) WITH APPLIED 1x4 TRIM (FIRE RATED GYP. CLNG. CONT. ABOVE AT STRUCTURE)
  -  BEAD BOARD CEILING DIRECTLY ATTACHED TO STRUCTURE



Prepared For:  
**The Inn at Diamond Cove, LLC.**  
 PO BOX 3572  
 PORTLAND, ME 04101

Interior Designer:  
**truexcollins**  
 INTERIORS  
 298 BATTERY STREET BURLINGTON, VERMONT 05401 USA  
 Phone 802.656.2775 800.227.1076  
 ARCHITECTURE | INTERIOR DESIGN | truexcollins.com

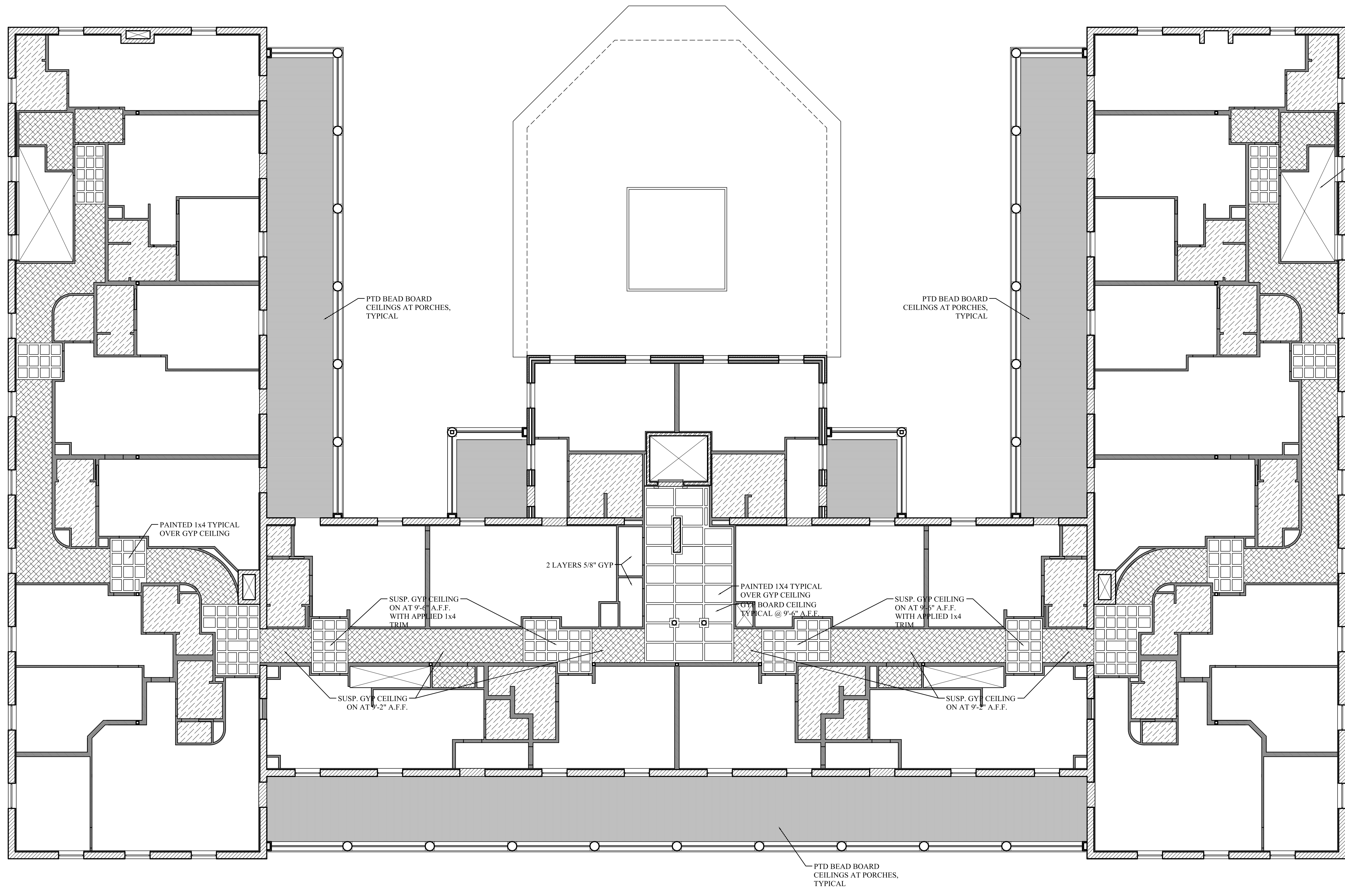
Architect:  
**ARCHETYPE**  
 architects  
 48 Union Wharf Portland, Maine 04101  
 (207) 772-6022 Fax (207) 772-4056

Project:  
**THE INN AT DIAMOND COVE, LLC**  
 MCKINLEY COURT  
 GREAT DIAMOND ISLAND, MAINE

Revisions:  
 Issued for Construction 03 Feb 14

Date: 03 Feb 2014  
 Scale: 1/8" = 1'-0"  
**SECOND FLOOR REFLECTED CEILING PLAN**

**A6.02**



**1** | SECOND FLOOR REFLECTED CEILING PLAN  
 SCALE: 1/8"=1'-0"

