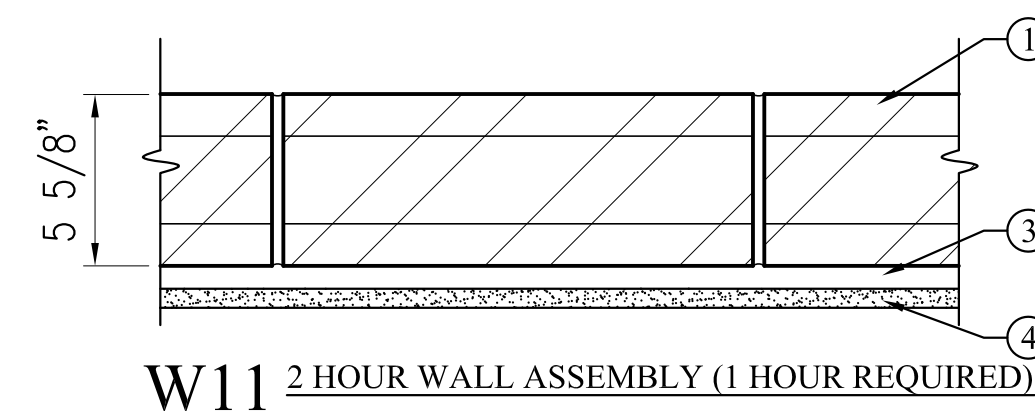


W15 1 HOUR BEARING WALL

**W15 EXTERIOR BRICK VENEER WALL**  
NO FIRE RATING REQUIRED  
R-VALUE = 21

- Wood Studs** – Nom 2 by 6 in. (SEE STRUCTURALS FOR SPACING) with two 2 by 6 in. top and one 2 by 6 in. bottom plates. Studs laterally-braced by wood structural panel sheathing (Item 5) and effectively fire stopped at top and bottom of wall.
- Wallboard, Gypsum** – Any UL Classified 5/8 in. thick, 4 ft wide, applied vertically and nailed to studs and bearing plates 7 in. OC with 6d cement-coated nails, 1-7/8 in. long with 1/4 in. diam head.
- Joints and Nailheads** – (Not Shown) – Wallboard joints covered with tape and joint compound. Nail heads covered with joint compound.
- Insulation** – Spray-applied closed-cell foam insulation applied to achieve R-21 rating.
- Wood Structural Panel Sheathing** – Min 7/16 in. thick, 4 ft wide wood structural panels, min grade “C-D” or “Sheathing”. Installed with long dimension of sheet (strength axis) or face grain of plywood parallel with or perpendicular to studs. Vertical joints centered on studs. Horizontal joints backed with nom 2 by 6 in. wood blocking. Attached to studs on exterior side of wall with 6d cement coated box nails spaced 6 in. OC at perimeter of panels and 12 in. OC along interior studs.
- Vapor/Air Barrier** - Building wrap vapor/air barrier applied over wall sheathing. All seams taped in accordance with manufacturer's instruction.
- Siding** – Slate tile shingles.

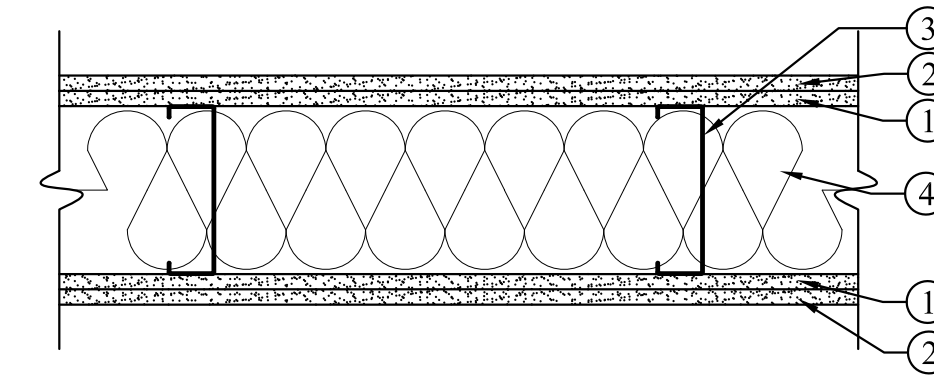
**WALL TYPES**



W11 2 HOUR WALL ASSEMBLY (1 HOUR REQUIRED)

**W11 BEARING/NON-BEARING CMU WALL 2-HOUR**  
DESIGN NUMBER U.L. U906

- Concrete Blocks** - Nominal 6x8x16 inch, hollow, Classification D-2 (2 hr).
- Mortar** - Blocks laid in full bed of mortar, nom. 3/8 in. thick, of not less than 2-1/4 and not more than 3-1/2 parts of clean sharp sand to 1 part Portland cement (proportioned by volume) and not more than 50 percent hydrated lime (by cement volume). Vertical joints staggered.
- Wood Strapping- (ADDED)** 1x3 wood strapping, 16" O.C.
- Gypsum Board** – 5/8 in. thick, 4 ft wide, attached to wood strapping with Type S steel screws spaced 8 in. OC along edges of board and 12 in. OC in the field of the board. Joints oriented vertically and staggered on opposite sides of the assembly 48 in. OC.

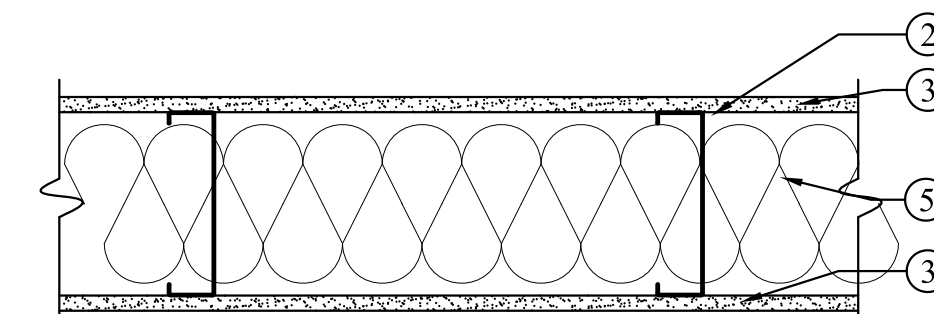


W12 1 HOUR CORRIDOR WALL (1/2 HOUR REQUIRED)

**W12 1 HOUR CORRIDOR WALL ASSEMBLY**

GA FILE NO. WP 1521 GENERIC 2 HOUR FIRE  
55 to 59 STC SOUND  
Thickness: 75/8"  
Approx. Weight: 9 psf  
Fire Test: See WP 1545  
(UC, 9-7-64; ULC 80T499, 3-26-81, ULC Design W414)  
Sound Test: NRCC 815-NV, 2-3-81  
GYPSUM WALLBOARD, STEEL STUDS

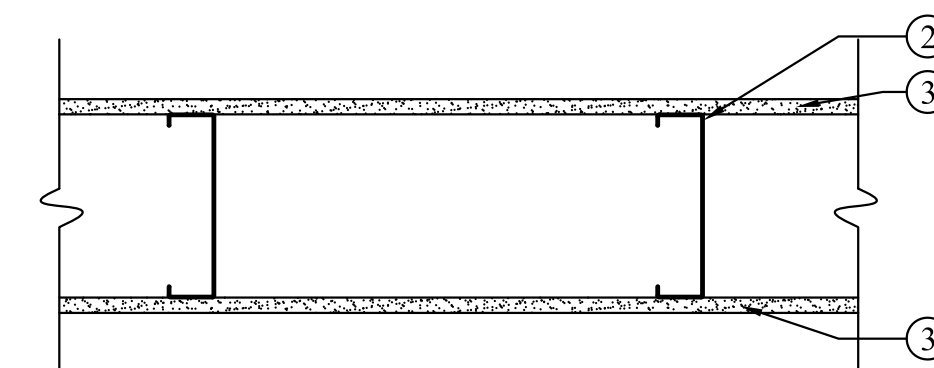
- Base layer 1/2" type X gypsum wallboard or gypsum veneer base applied parallel to each side of steel studs, with 1" Type S drywall screws 24" o.c.
- Face layer 1/2" type X gypsum wallboard or gypsum veneer base applied parallel to each side with 15/8" Type S drywall screws 12" o.c. Joints staggered 24" each layer and side.
- Studs** - 5 5/8" steel studs 24" o.c.
- Sound batt** - glass fiber insulation



W13 TYPICAL UNRATED ATTIC PARTITION

**W13 UNRATED PARTITION WALL ASSEMBLY**

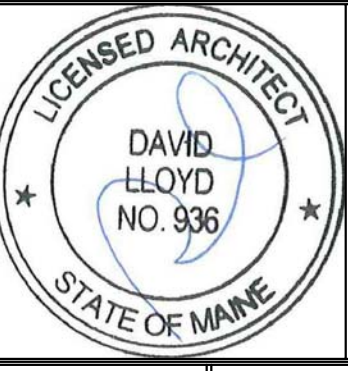
- Floor and Ceiling Runners** – Channel shaped, attached to floor and ceiling in two rows, a min 1 in. apart, with steel fasteners spaced 24 in. OC. Runners fabricated from min No. 25 MSG galv steel, 1-1/4 in. deep and 6 in. wide.
- Steel Studs** – Channel shaped, supplied with cutouts, friction -fitted into floor and ceiling runners and spaced a max 24 in. OC. Studs cut 1/2 in. less than assembly height and evenly staggered between the two rows of floor and ceiling runners. Studs fabricated from min No. 25 MSG galv steel, min 5 5/8 in. wide by 1-5/8 in. deep with 3/8 in. folded back return flange legs.
- Gypsum Board** – 5/8 in. thick, 4 ft wide, attached to wood studs with Type S steel screws spaced 8 in. OC along edges of board and 12 in. OC in the field of the board. Joints oriented vertically and staggered on opposite sides of the assembly 48 in. OC.
- Joint Tape and Compound** – Vinyl, dry or premixed joint compound, applied in two coats to joints and screw heads; paper tape, 2 in. wide, embedded in first layer of compound over all joints. As an alternate, nominal 3/32 in. thick gypsum veneer plaster may be applied to the entire surface of Classified veneer baseboard. Joints reinforced. Paper tape and joint compound may be omitted when gypsum boards are supplied with square edges.
- Sound batt** - glass fiber insulation



W14 TYPICAL UNRATED INTERIOR PARTITION

**W14 UNRATED PARTITION WALL ASSEMBLY**

- Floor and Ceiling Runners** – Channel shaped, attached to floor and ceiling in two rows, a min 1 in. apart, with steel fasteners spaced 24 in. OC. Runners fabricated from min No. 25 MSG galv steel, 1-1/4 in. deep and 6 in. wide.
- Steel Studs** – Channel shaped, supplied with cutouts, friction -fitted into floor and ceiling runners and spaced a max 24 in. OC. Studs cut 1/2 in. less than assembly height and evenly staggered between the two rows of floor and ceiling runners. Studs fabricated from min No. 25 MSG galv steel, min 5 5/8 in. wide by 1-5/8 in. deep with 3/8 in. folded back return flange legs.
- Gypsum Board** – 5/8 in. thick, 4 ft wide, attached to wood studs with Type S steel screws spaced 8 in. OC along edges of board and 12 in. OC in the field of the board. Joints oriented vertically and staggered on opposite sides of the assembly 48 in. OC.
- Joint Tape and Compound** – Vinyl, dry or premixed joint compound, applied in two coats to joints and screw heads; paper tape, 2 in. wide, embedded in first layer of compound over all joints. As an alternate, nominal 3/32 in. thick gypsum veneer plaster may be applied to the entire surface of Classified veneer baseboard. Joints reinforced. Paper tape and joint compound may be omitted when gypsum boards are supplied with square edges.



Prepared For:  
**The Inn at Diamond Cove, LLC.**  
PO BOX 3572  
PORTLAND, ME 04101

Interior Designer:  
**truexcollins**  
INTERIORS  
209 BATTERY STREET BURLINGTON, VERMONT 05401 USA  
Phone 802.658.2775 800.227.1076  
ARCHITECTURE | INTERIOR DESIGN | truexcollins.com

Architect:  
**ARCHETYPE**  
architects  
48 Union Wharf Portland, Maine 04101  
(207) 772-6022 Fax (207) 772-4056

Project:  
**THE INN AT DIAMOND COVE, LLC**  
MCKINLEY COURT  
GREAT DIAMOND ISLAND, MAINE

Revisions:	Issued for Construction 03 Feb 14

Date: 03 Feb 2014  
Scale: AS NOTED  
**WALL TYPES**

**A4.02**