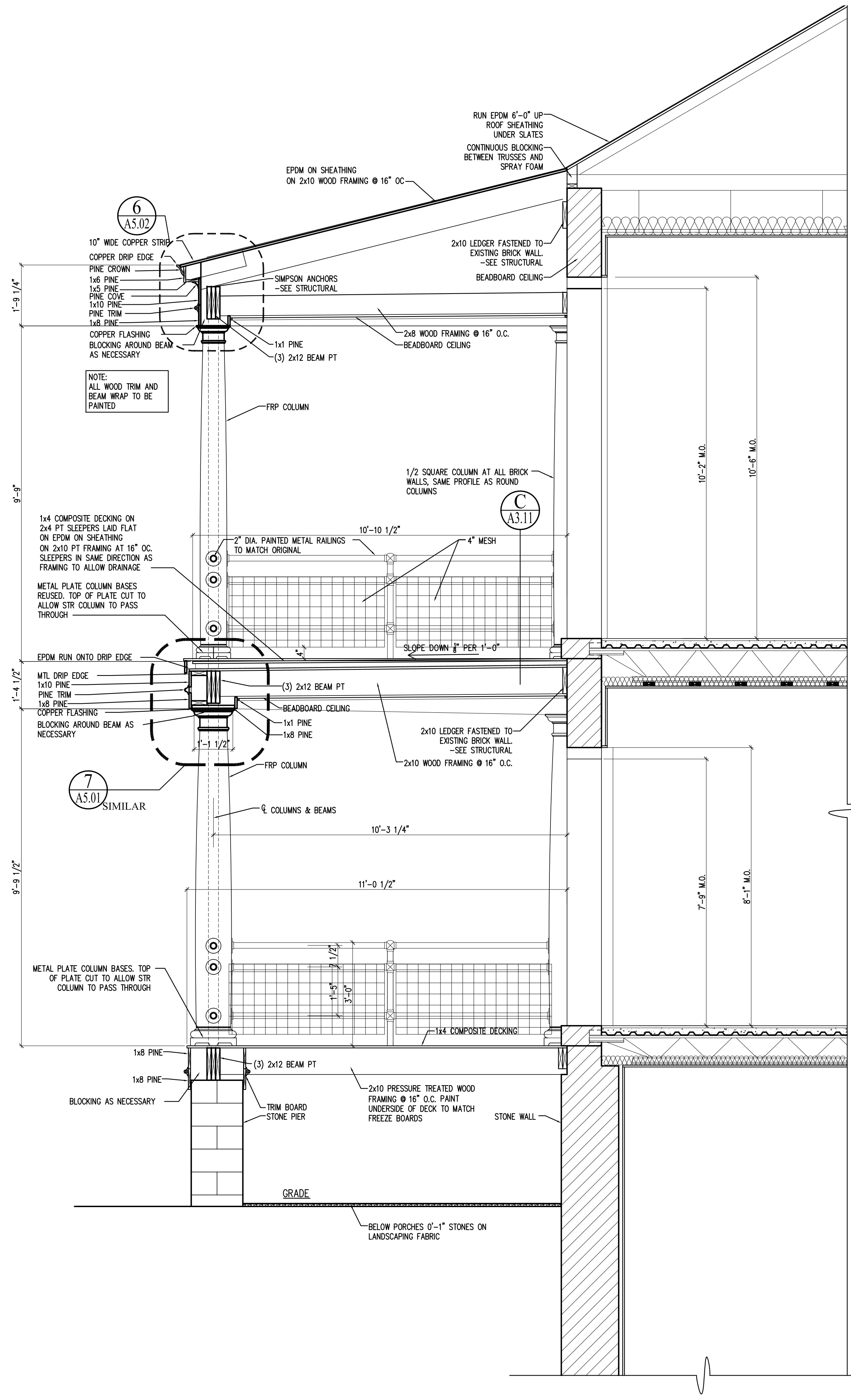
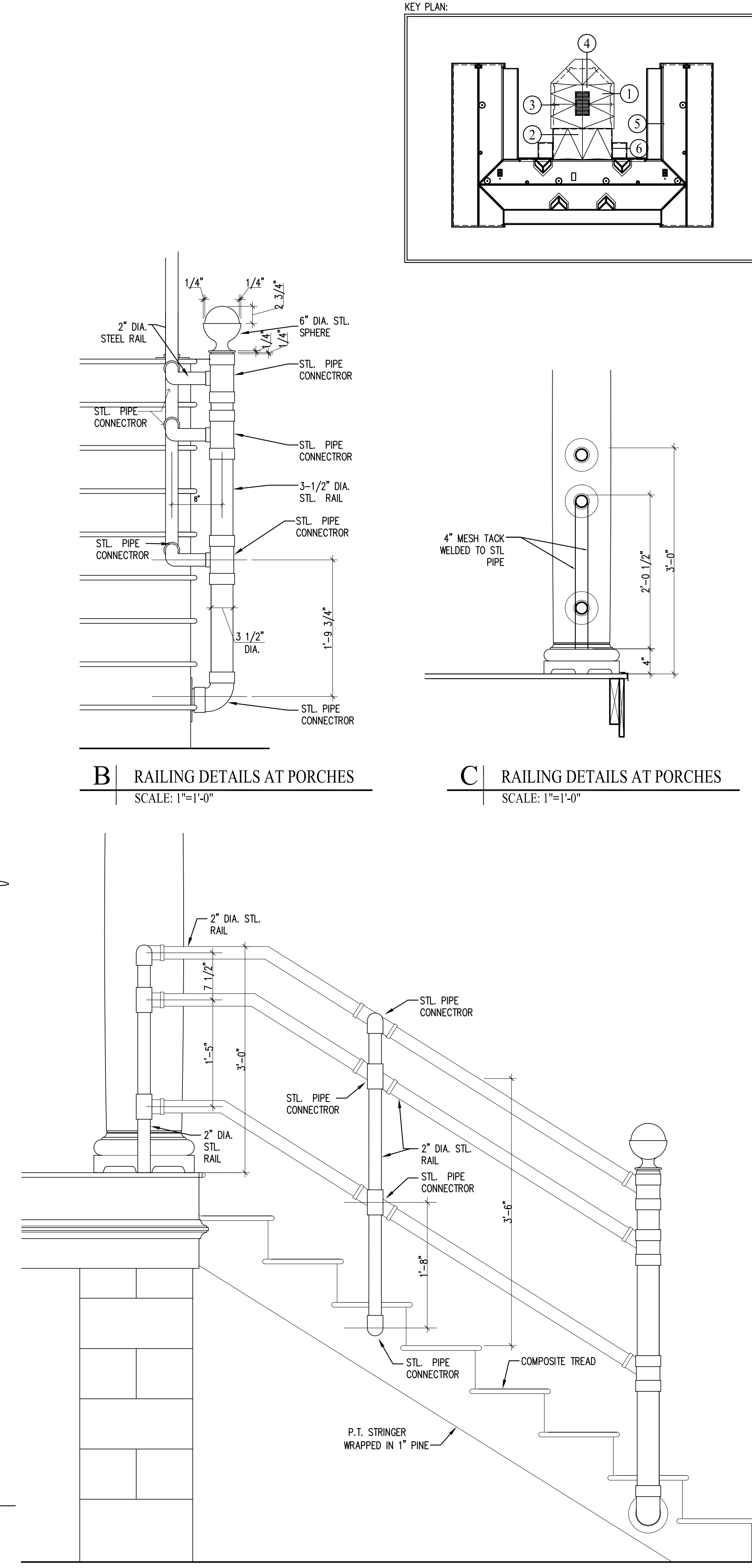


**6** WALL SECTION - PORCH AT NEW CONSTRUCTION  
SCALE: 1/2"=1'-0"



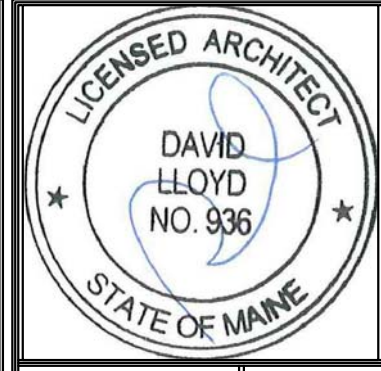
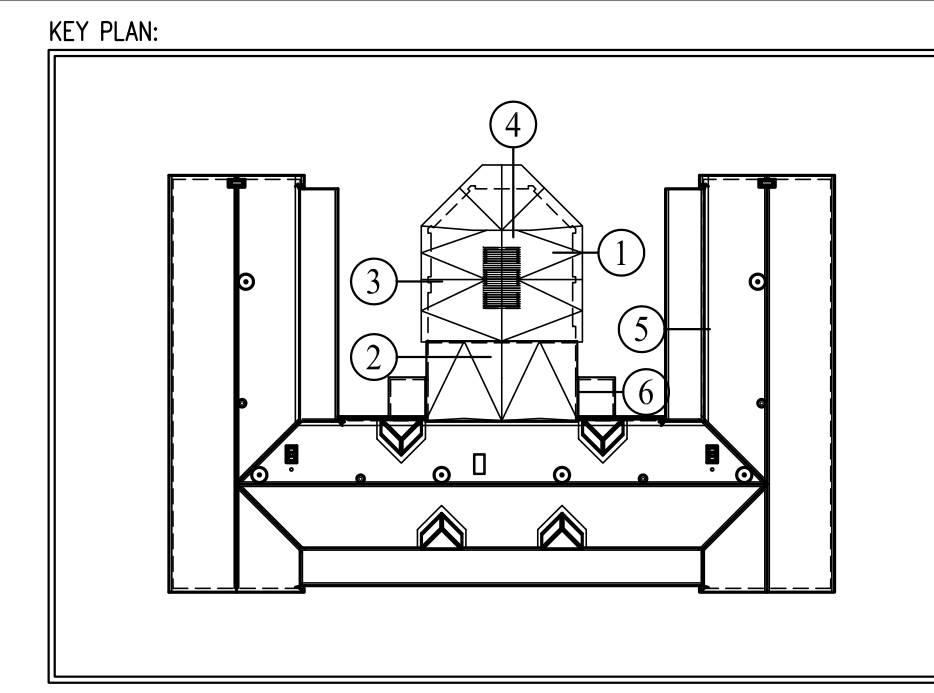
**5** WALL SECTION - RECONSTRUCTED PORCH AT EXISTING BUILDING  
SCALE: 1/2"=1'-0"



**A** RAILING DETAILS AT PORCHES  
SCALE: 1"=1'-0"

**B** RAILING DETAILS AT PORCHES  
SCALE: 1"=1'-0"

**C** RAILING DETAILS AT PORCHES  
SCALE: 1"=1'-0"



Prepared For:  
**The Inn at Diamond Cove, LLC.**  
PO BOX 3572  
PORTLAND, ME 04101

Interior Designer:  
**truexullins**  
INTERIORS  
209 BATTERY STREET BURLINGTON, VERMONT 05401 USA  
Phone 802.858.2775 - 800.227.1076  
ARCHITECTURE | INTERIOR DESIGN | TRUEXULLINS.COM

Architect:  
**ARCHETYPE**  
architects  
48 Union Wharf Portland, Maine 04101  
(207) 772-6022 Fax (207) 772-4056

Project:  
**THE INN AT DIAMOND COVE, LLC**  
McKINLEY COURT  
GREAT DIAMOND ISLAND, MAINE

Revisions:  
Issued for Construction 03 Feb 14

Date:  
03 Feb 2014  
Scale:  
1/2" = 1'-0"

**PORCH SECTIONS**  
**A3.11**