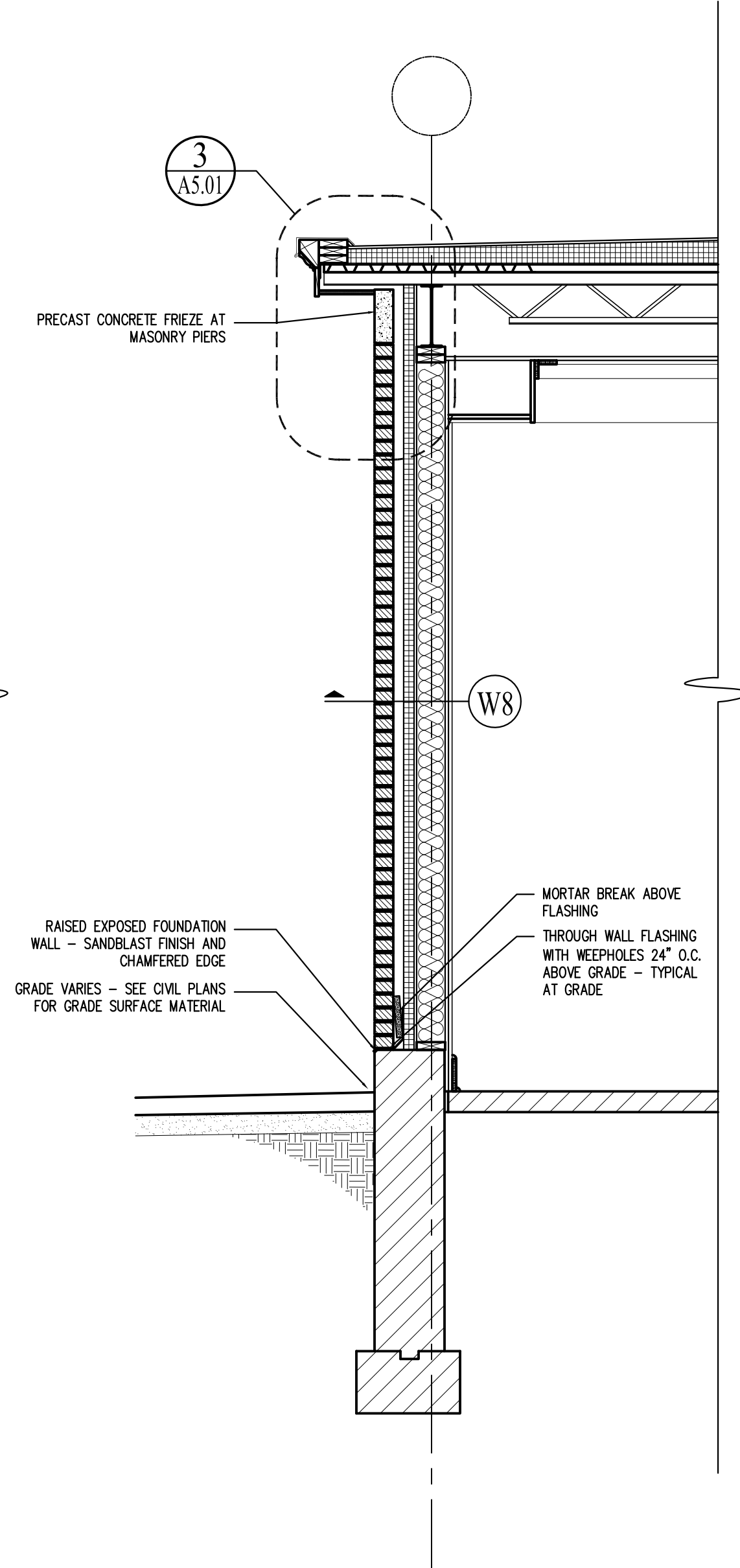
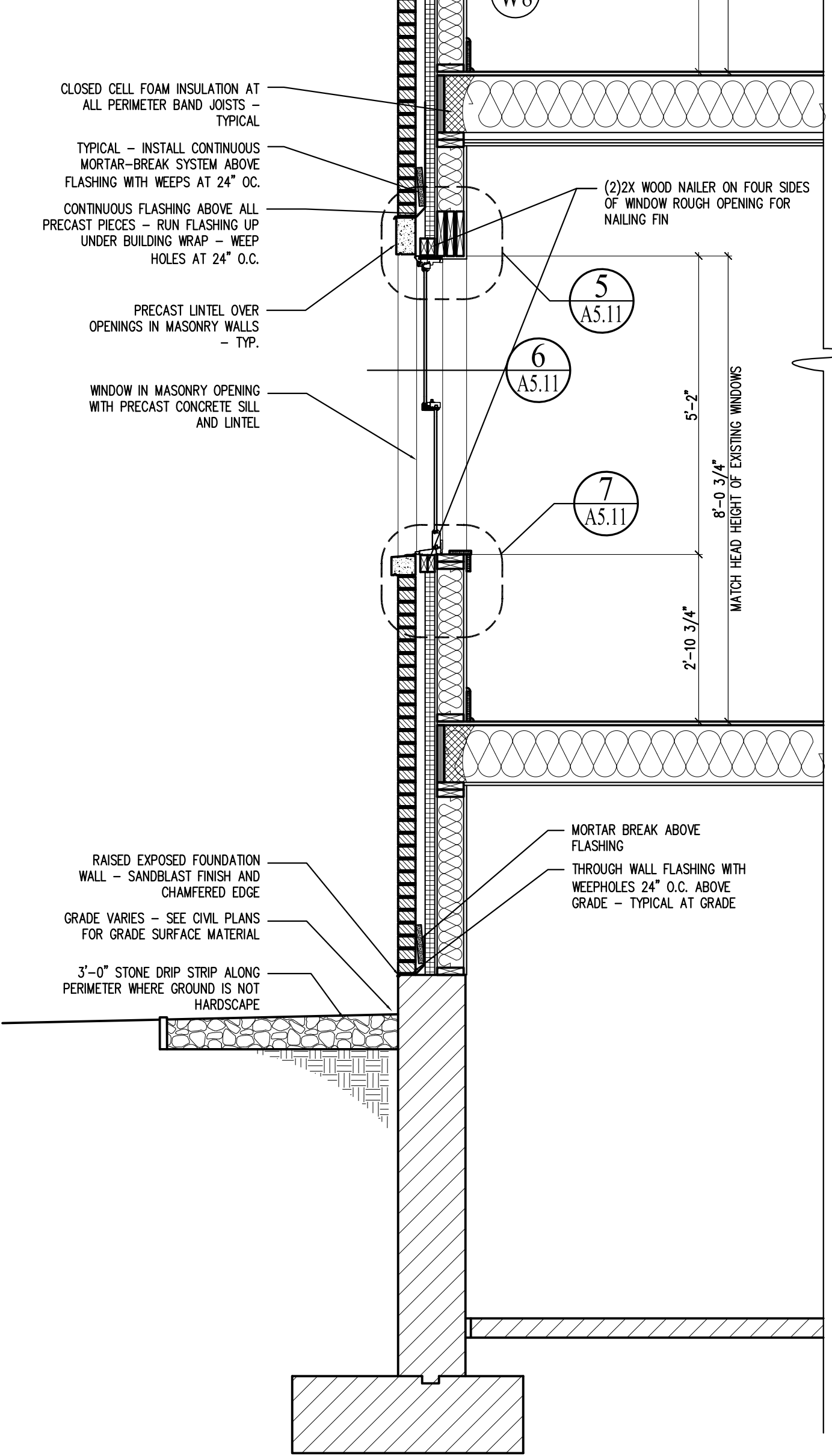


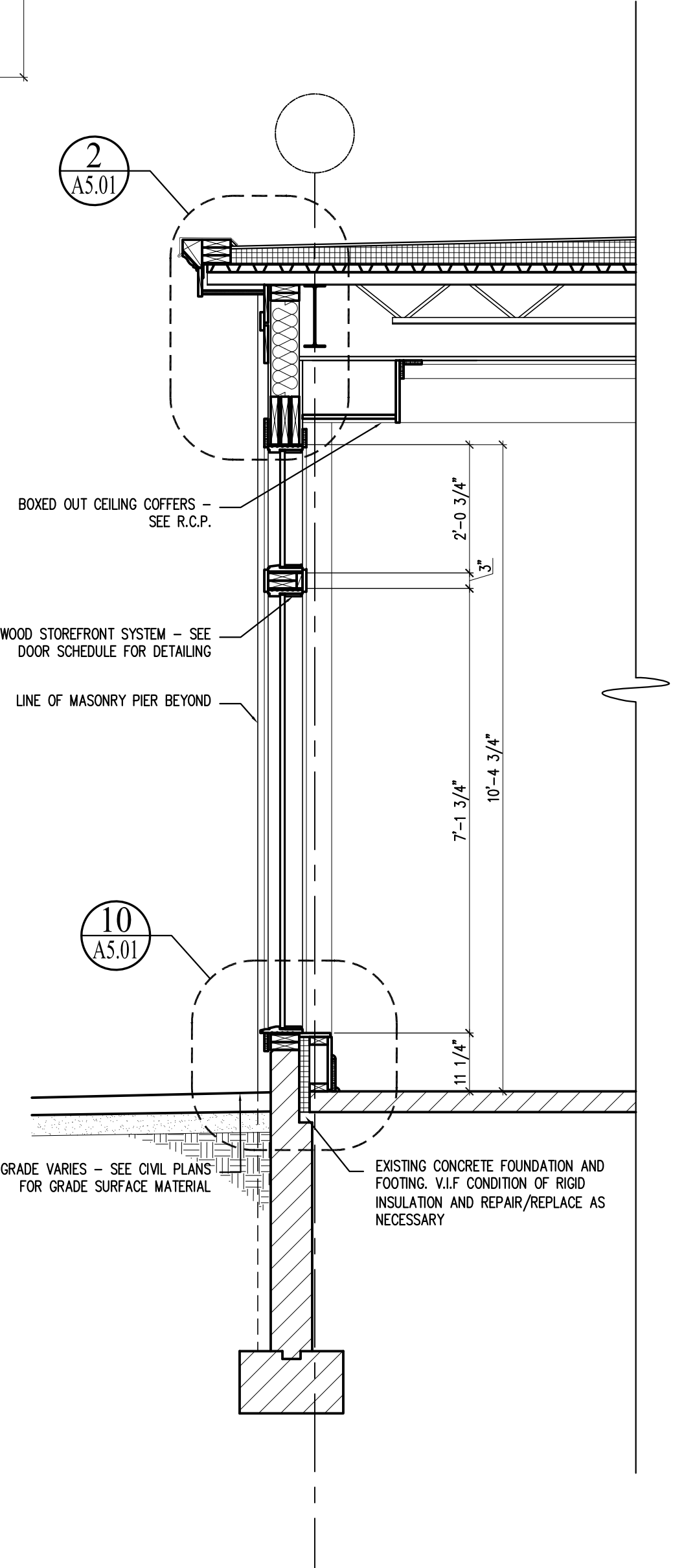
4 | WALL SECTION - ADDITION - ENTRY CANOPY
SCALE: 1/2"=1'-0"



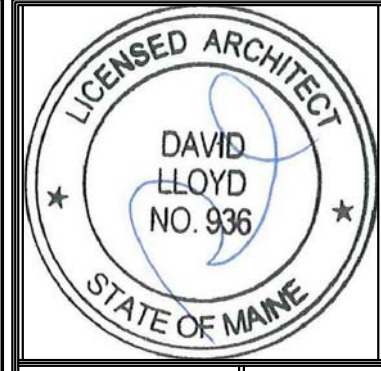
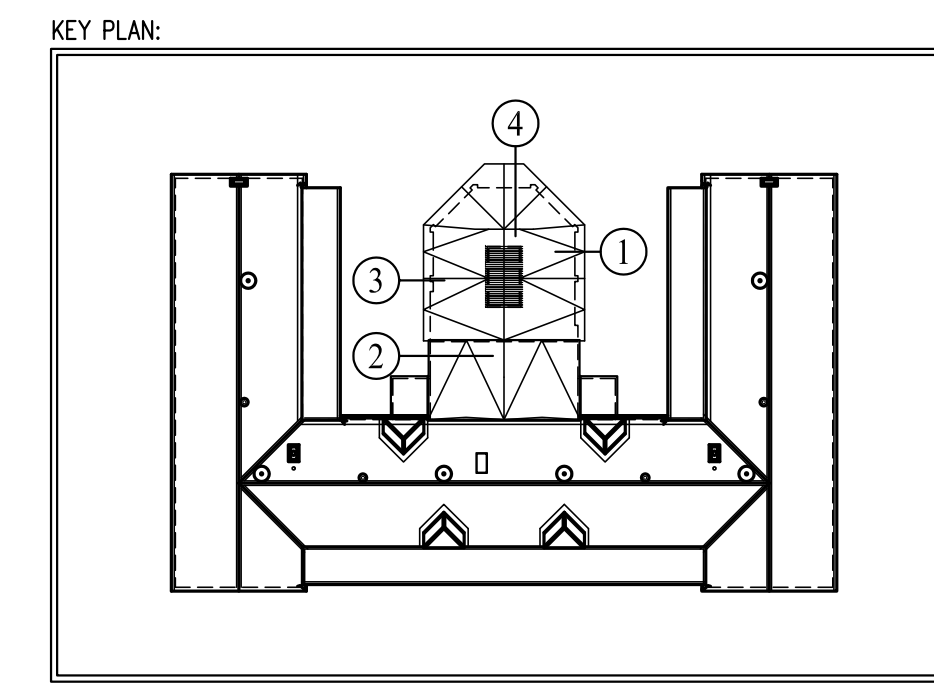
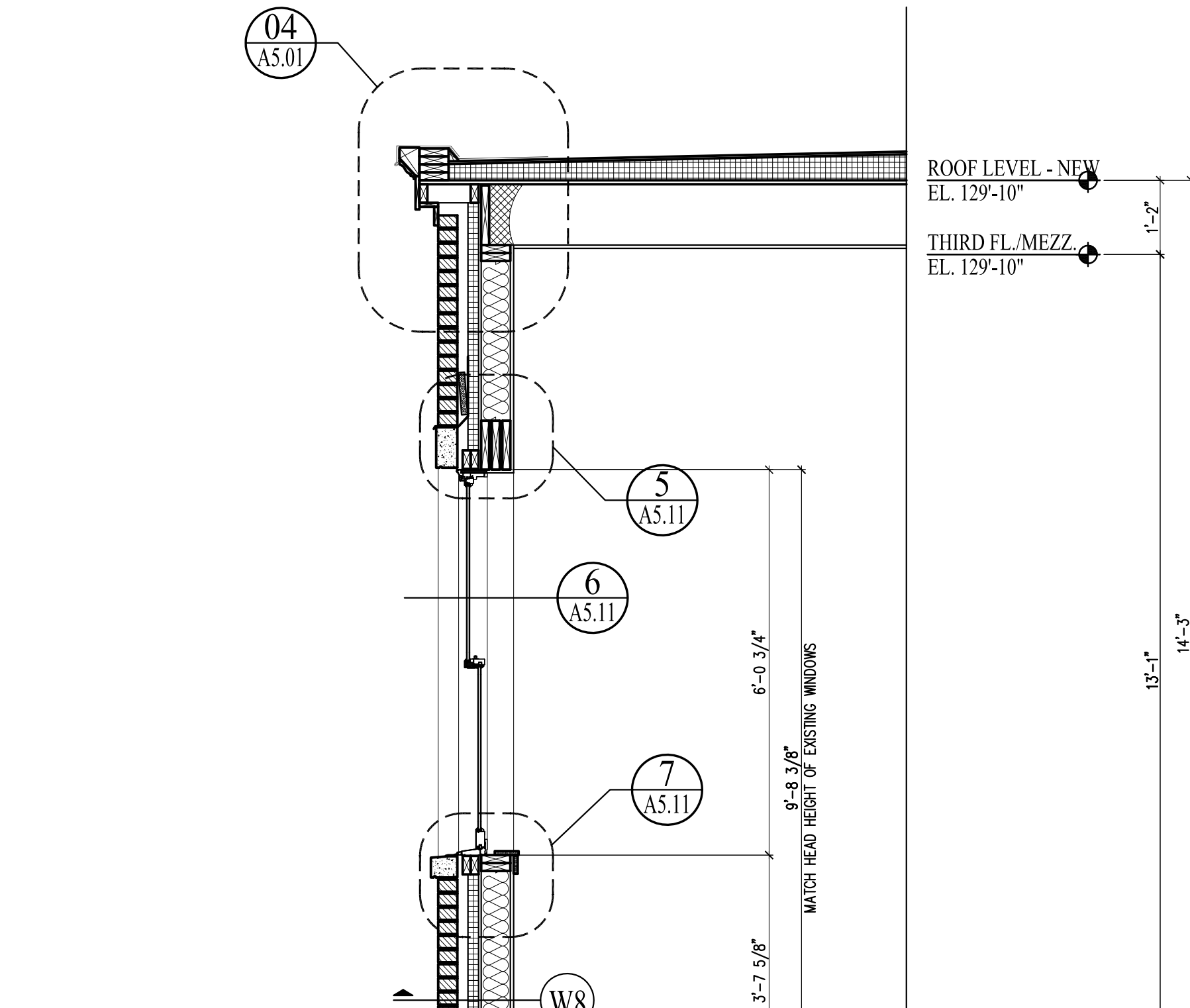
3 | TYPICAL WALL SECTION - ADDITION - BRICK PIER
SCALE: 1/2"=1'-0"



2 | TYPICAL WALL SECTION - ADDITION
SCALE: 1/2"=1'-0"



1 | WALL SECTION - ADDITION - WOOD STOREFRONT
SCALE: 1/2"=1'-0"



Prepared For:
The Inn at Diamond Cove, LLC.
PO BOX 3572
PORTLAND, ME 04101

Interior Designer:
truexcollins
INTERIORS
209 BATTERY STREET BURLINGTON, VERMONT 05401 USA
Phone 802.858.2775 - 800.227.1076
ARCHITECTURE | INTERIOR DESIGN | TRUXXCOLLINS.COM

Architect:
ARCHITECTURE architects
48 Union Wharf Portland, Maine 04101
(207) 772-6022 Fax (207) 772-4056

Project:
THE INN AT DIAMOND COVE, LLC
McKINLEY COURT
GREAT DIAMOND ISLAND, MAINE

Revisions:
Issued for Construction 03 Feb 14

Date:
03 Feb 2014

Scale:
1/2" = 1'-0"

A3.10
WALL SECTIONS