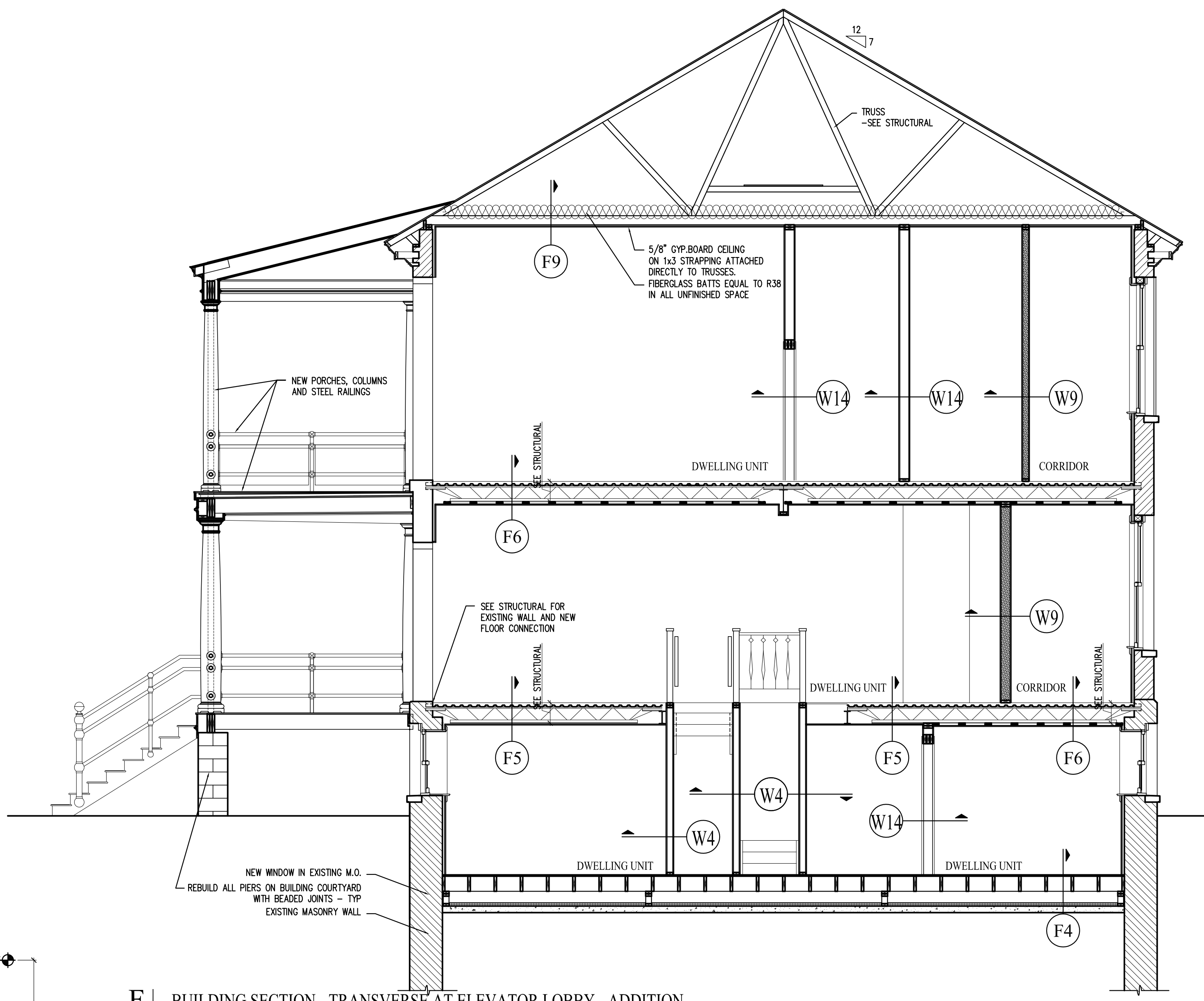
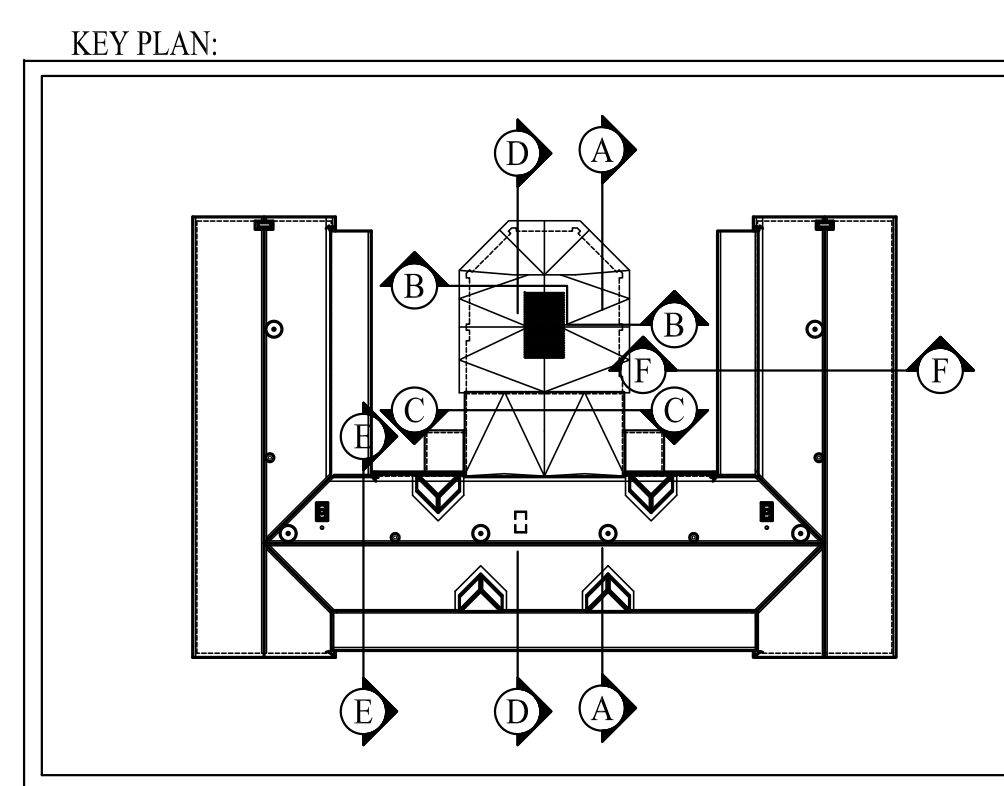


E BUILDING SECTION - TRANSVERSE AT ELEVATOR LOBBY - ADDITION
SCALE: 1/4"=1'-0"



F BUILDING SECTION - TRANSVERSE AT ELEVATOR LOBBY - ADDITION
SCALE: 1/4"=1'-0"



Prepared For: The Inn at Diamond Cove, LLC. PO BOX 3572 PORTLAND, ME 04101	Interior Designer: truexcollins INTERIORS 209 BATTERY STREET BURLINGTON, VERMONT 05401 USA Phone 802.656.2775 - 800.227.1076 ARCHITECTURE INTERIOR DESIGN TRUXXCOLLINS.COM
Architect: ARCHETYPE architects 48 Union Wharf Portland, Maine 04101 (207) 772-6022 Fax (207) 772-4056	Project: THE INN AT DIAMOND COVE, LLC MCKINLEY COURT GREAT DIAMOND ISLAND, MAINE
Revisions: Issued for Construction 03 Feb 14	Date: 03 Feb 2014
Scale: 1/4" = 1'-0"	BUILDING SECTIONS
A3.03	