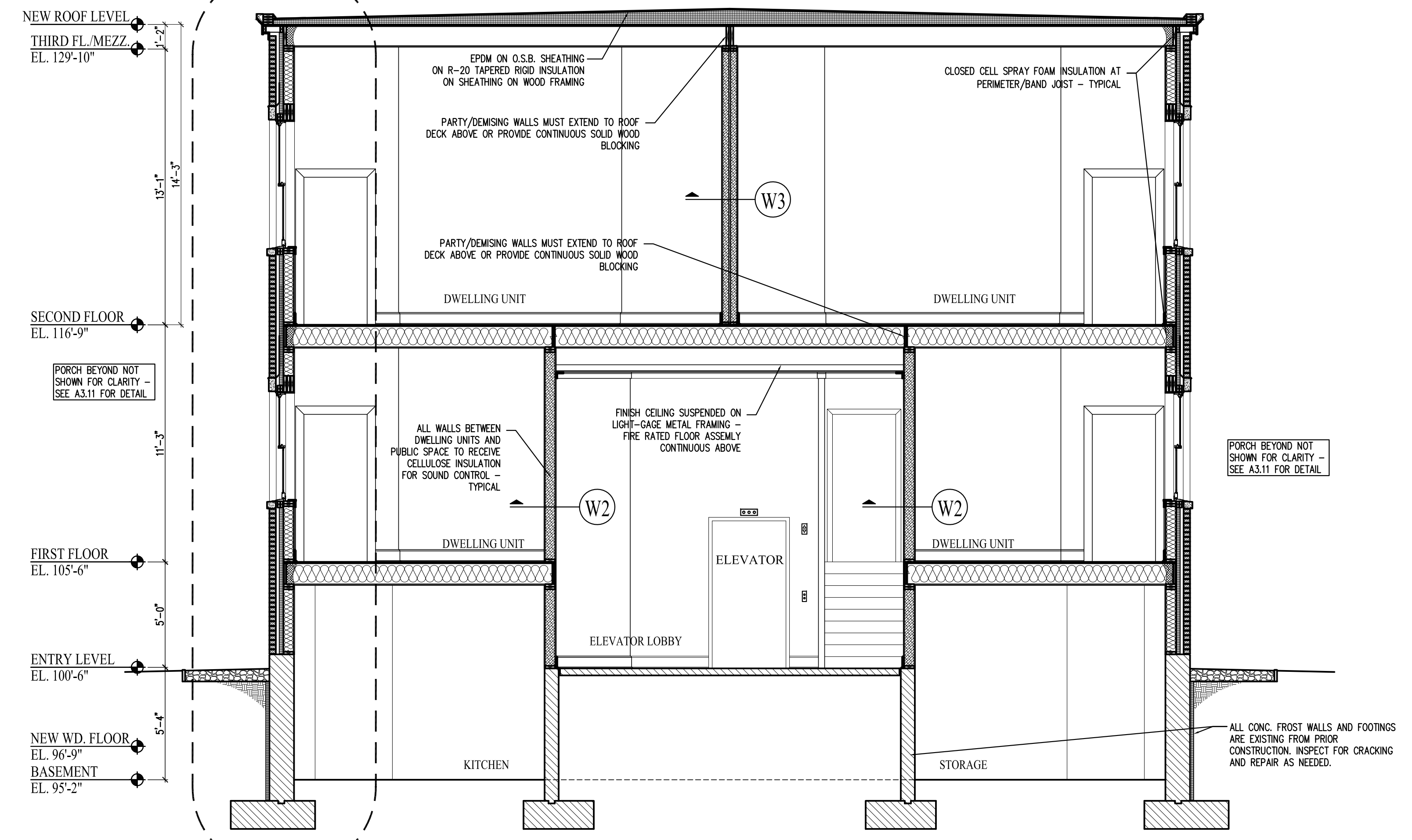
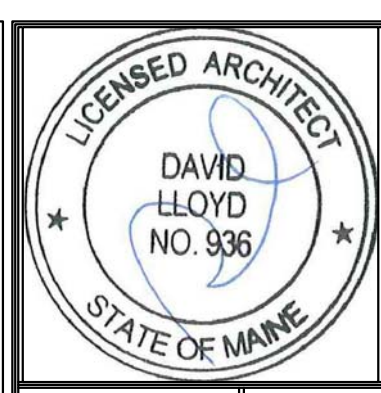
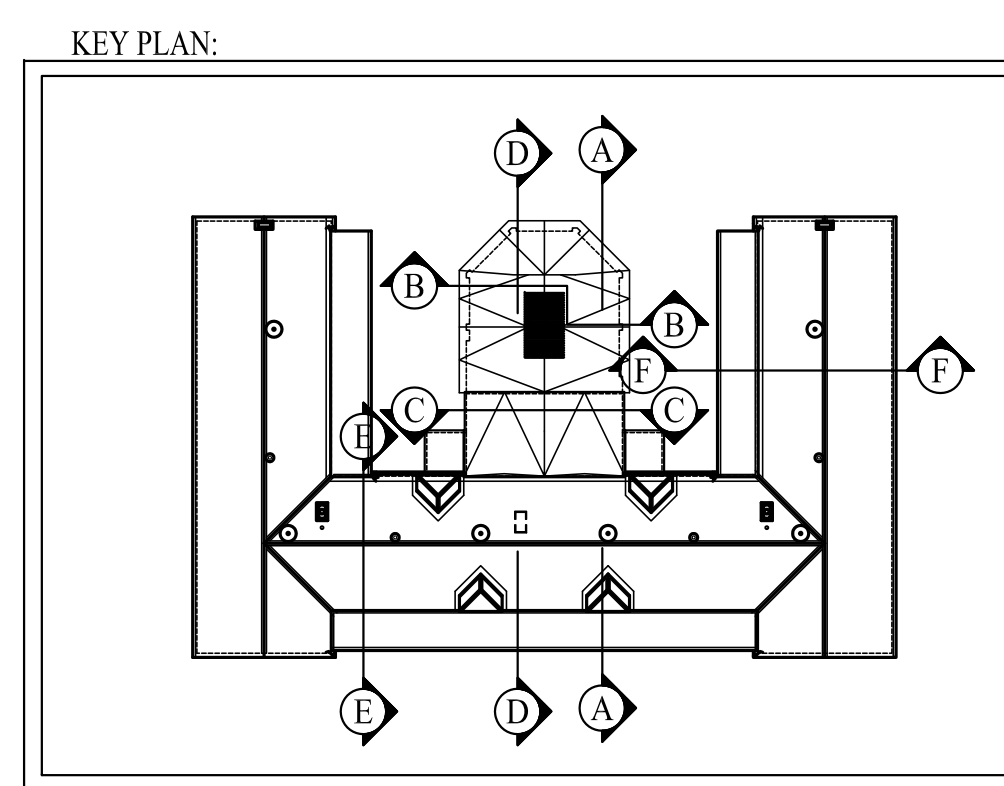


**D** BUILDING SECTION - LONGITUDINAL THROUGH ADDITION AND ELEVATOR SHAFT  
SCALE: 1/4"=1'-0"



**C** BUILDING SECTION - TRANSVERSE AT ELEVATOR LOBBY - ADDITION  
SCALE: 1/4"=1'-0"



Prepared For:  
**The Inn at Diamond Cove, LLC.**  
PO BOX 3572  
PORTLAND, ME 04101

Interior Designer:  
**truexcollins**  
INTERIORS  
209 BATTERY STREET BURLINGTON, VERMONT 05401 USA  
Phone 802.656.2775 800.227.1076  
ARCHITECTURE | INTERIOR DESIGN | TRUEXCOLLINS.COM

Architect:  
**ARCHETYPE**  
architects  
48 Union Wharf Portland, Maine 04101  
(207) 772-6022 Fax (207) 772-4056

Project:  
**THE INN AT DIAMOND COVE, LLC**  
MCKINLEY COURT  
GREAT DIAMOND ISLAND, MAINE

Revisions:  
Issued for Construction 03 Feb 14

Date: 03 Feb 2014  
Scale: 1/4" = 1'-0"  
**BUILDING SECTIONS**

**A3.02**