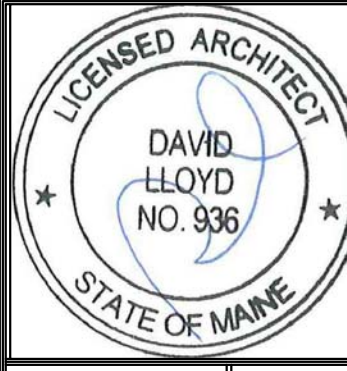


LEGEND

| | |
|---|--|
| BUILDING SECTION | |
| WALL SECTION | |
| SECTION DETAIL | |
| PLAN DETAIL | |
| WALL TYPE (SEE SHEET A4.01) | |
| FLOOR/CEILING TYPE (SEE SHEET A4.02) | |



Prepared For:
**The Inn at Diamond
Cove, LLC.**
PO BOX 3572
PORTLAND, ME 04101

Interior Designer:
truexcollins
INTERIORS
298 BATTERY STREET BURLINGTON, VERMONT 05401 USA
Phone 802.658.2775 800.227.1076
ARCHITECTURE | INTERIOR DESIGN | truexcollins.com

Architect:
ARCHETYPE
architects
48 Union Wharf Portland, Maine 04101
(207) 772-6022 Fax (207) 772-4056

Project:
**THE INN AT
DIAMOND COVE,
LLC**
MCKINLEY COURT
GREAT DIAMOND ISLAND, MAINE

Revisions:
Issued for Construction 03 Feb 14

Date:
03 Feb 2014

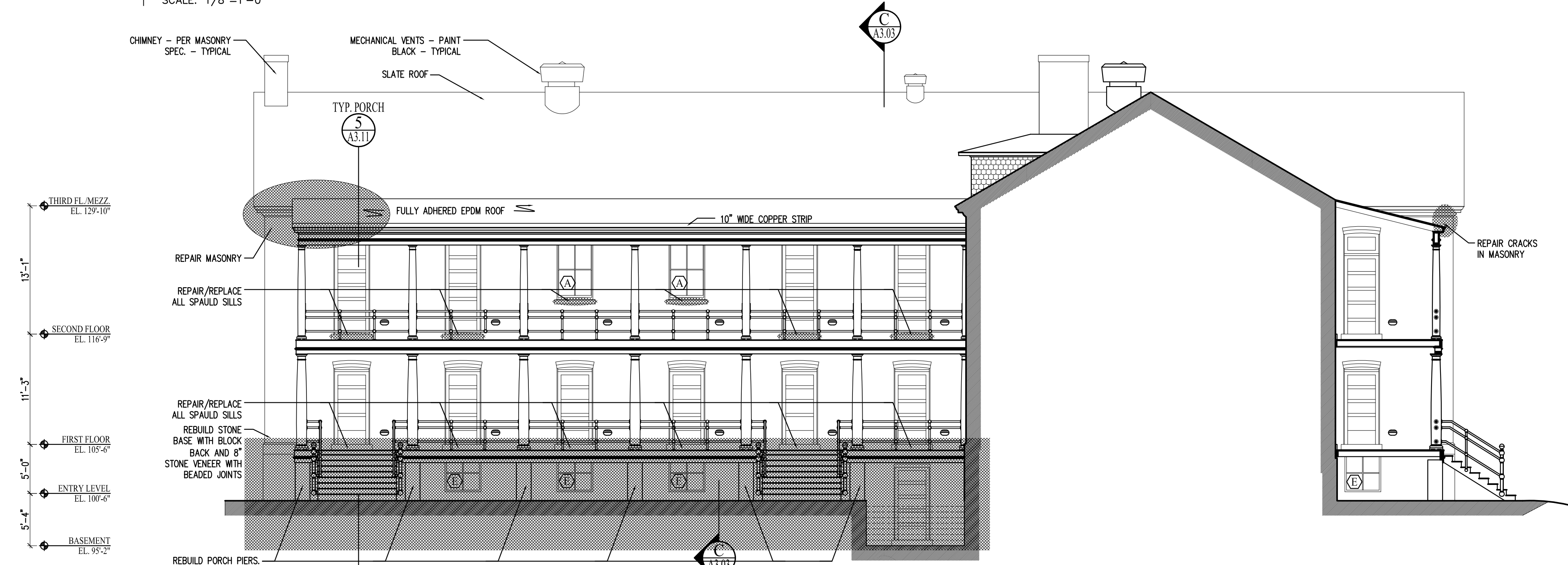
Scale:
1/8" = 1'-0"

**BUILDING
ELEVATIONS**

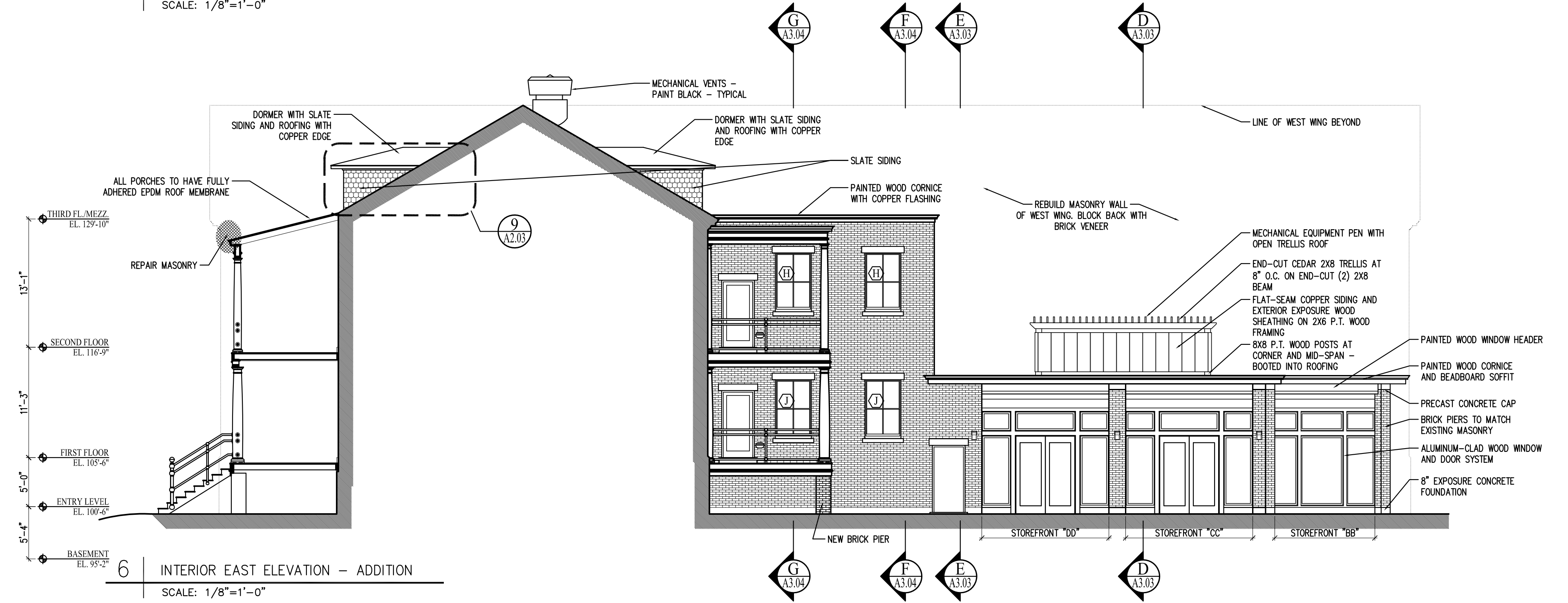
A2.02



4 | WEST ELEVATION - ADDITION
SCALE: 1/8"=1'-0"



5 | INTERIOR WEST ELEVATION - EAST WING PORCH
SCALE: 1/8"=1'-0"



6 | INTERIOR EAST ELEVATION - ADDITION
SCALE: 1/8"=1'-0"