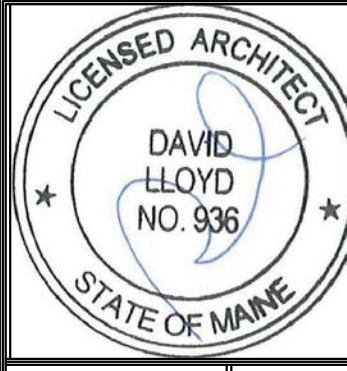


LEGEND

BUILDING SECTION	
WALL SECTION	
SECTION DETAIL	
PLAN DETAIL	
WALL TYPE (SEE SHEET A4.01)	
FLOOR/CEILING TYPE (SEE SHEET A4.02)	



Prepared For:
The Inn at Diamond Cove, LLC.
PO BOX 3572
PORTLAND, ME 04101

Interior Designer:
truexcollins
INTERIORS
298 BATTERY STREET BURLINGTON, VERMONT 05401 USA
Phone 802.658.2775 800.227.1076
ARCHITECTURE | INTERIOR DESIGN | truexcollins.com

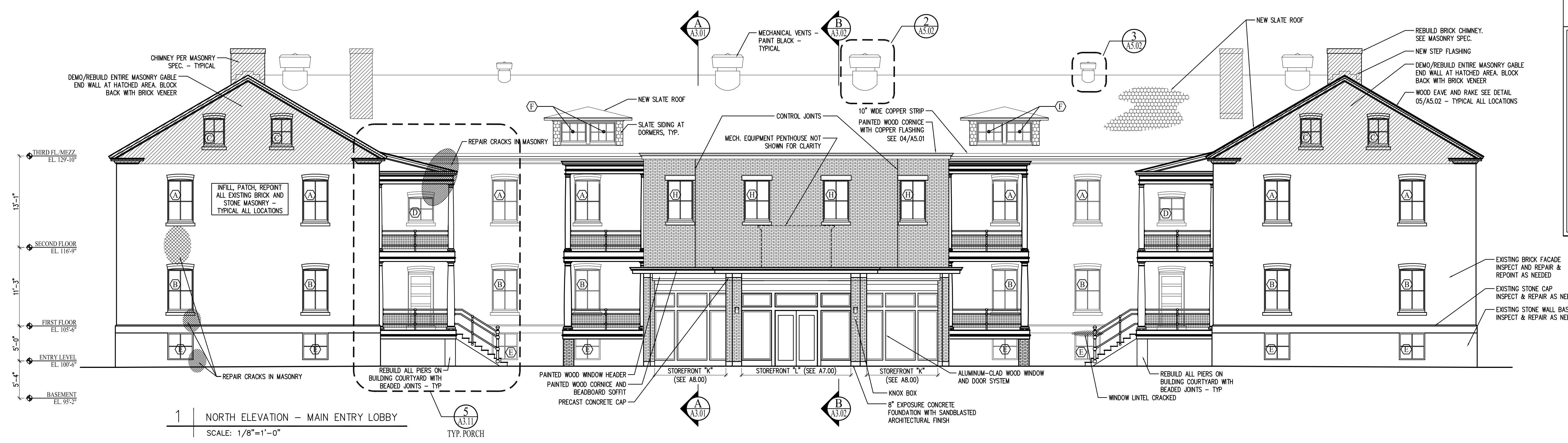
Architect:
ARCHETYPE
architects
48 Union Wharf Portland, Maine 04101
(207) 772-6022 Fax (207) 772-4056

Project:
**THE INN AT
DIAMOND COVE,
LLC**
MCKINLEY COURT
GREAT DIAMOND ISLAND, MAINE

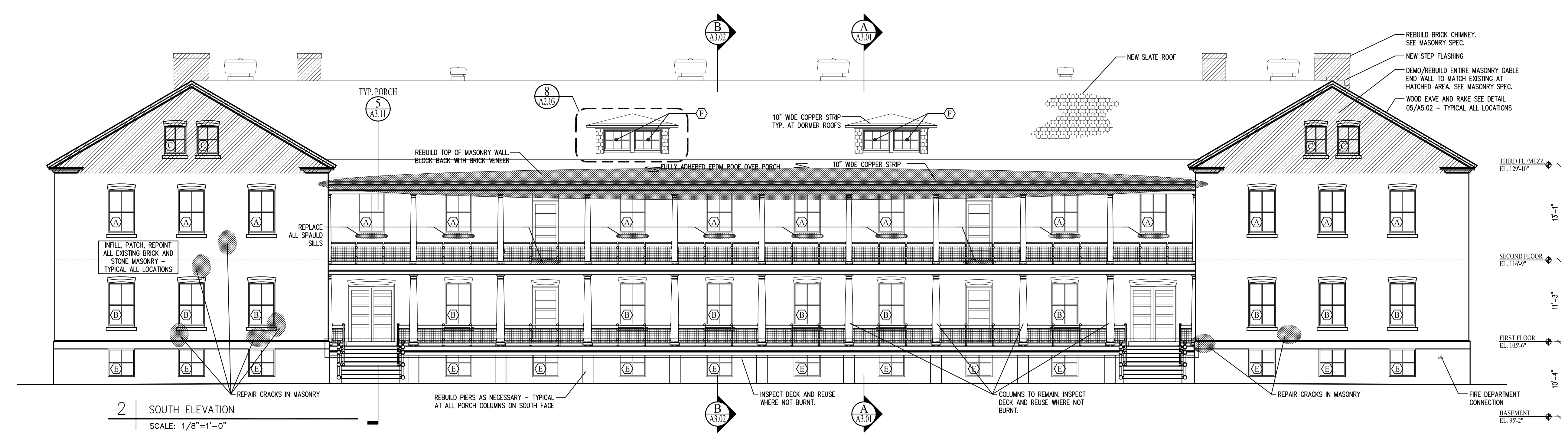
Revisions:
Issued for Construction 03 Feb 14

Date:
03 Feb 2014
Scale:
1/8" = 1'-0"

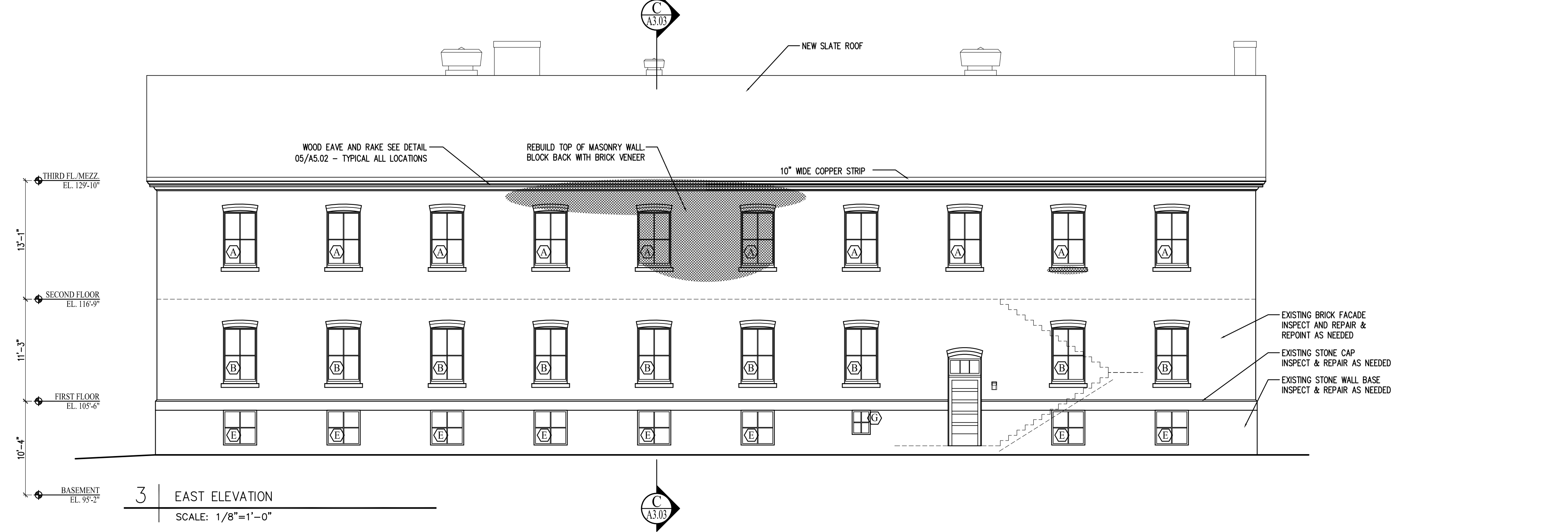
**BUILDING
ELEVATIONS**



1 NORTH ELEVATION - MAIN ENTRY LOBBY
SCALE: 1/8"=1'-0"



2 SOUTH ELEVATION
SCALE: 1/8"=1'-0"



3 EAST ELEVATION
SCALE: 1/8"=1'-0"