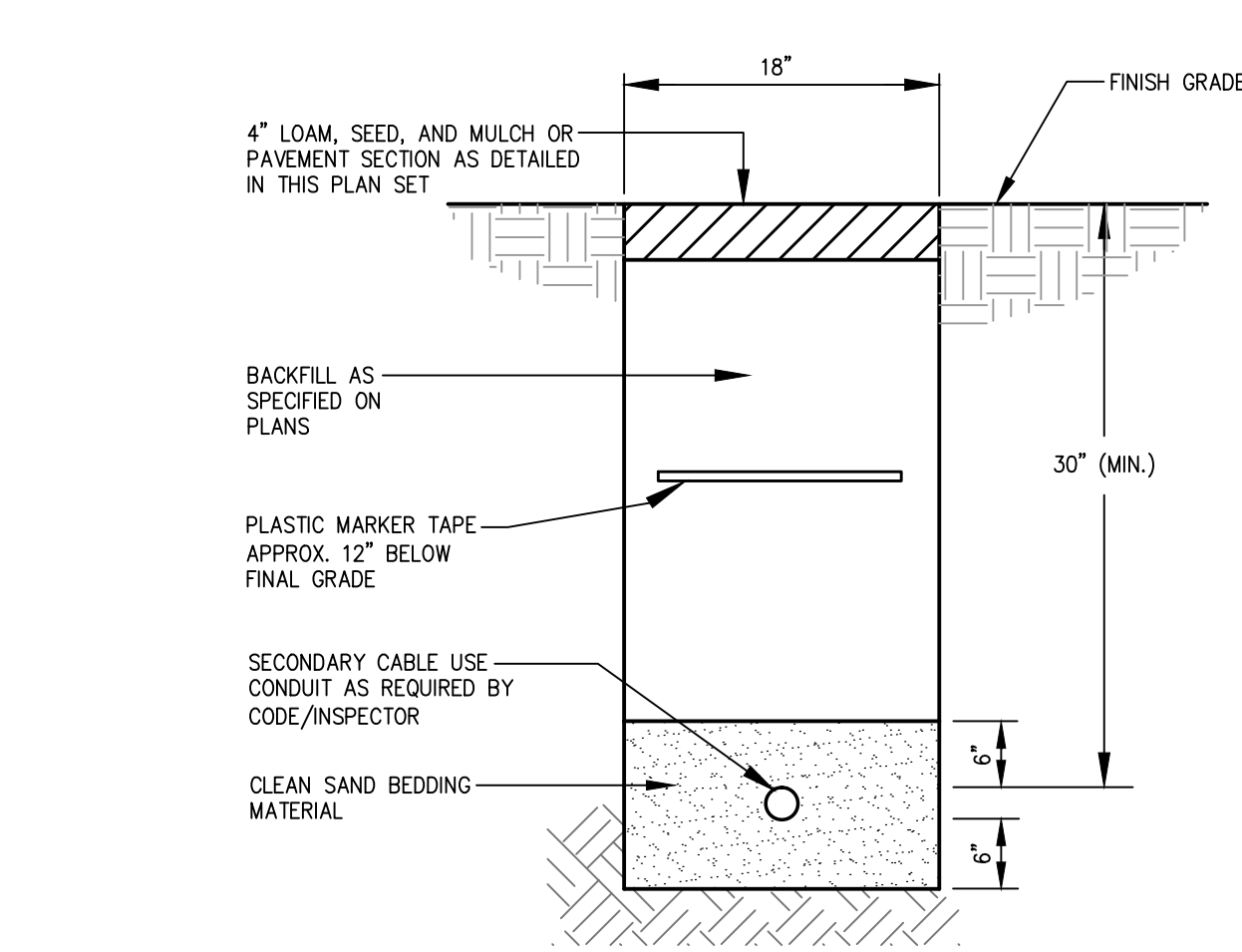


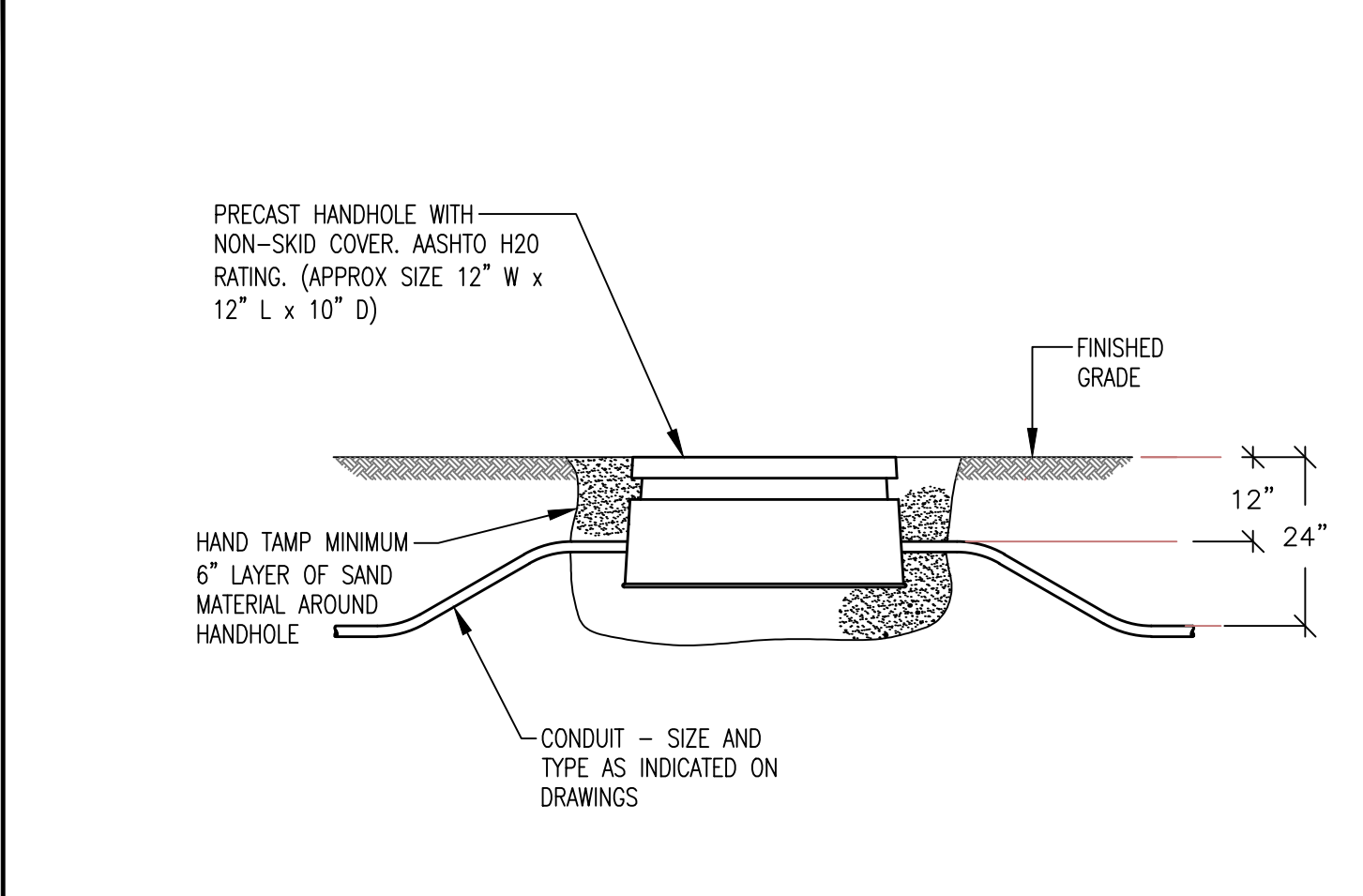
SERVICE	CONDUIT SIZE	CONDUIT TYPE	UTILITY	REMARKS
A	5"	SCHEDULE 40 PVC ELECTRICAL GRADE	POWER	SEE NOTE 1
B	4"	SCHEDULE 40 PVC	TELEPHONE	SEE NOTE 1
C	2"	SCHEDULE 40 PVC	COMMUNICATION	

- NOTES:**
- ONE CONDUIT CAPPED FOR SPARE, PROVIDE GALVANIZED STEEL LONG SWEEP AT RISER POLE AND EXTEND GALVANIZED CONDUIT TO 10' ABOVE GRADE AT POLE WITH STAND-OFF BRACKETS.
 - SEE SITE ELECTRICAL PLAN (SHEET C-4) FOR LOCATION AND NUMBER OF CONDUITS.

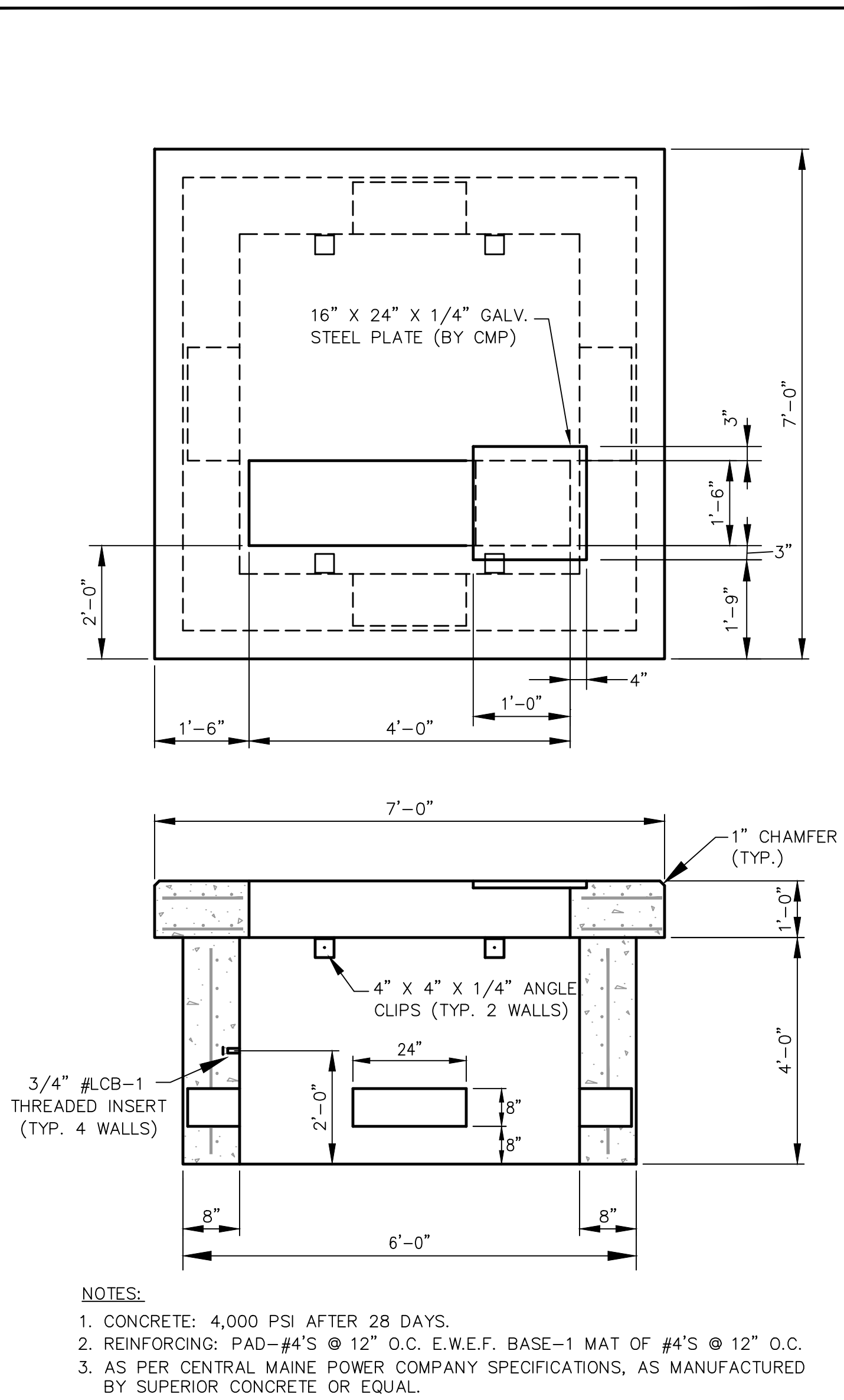
(A) UTILITY TRENCH - PRIMARY ELECTRIC, TEL. & COMMUNICATIONS DETAIL
N.T.S.



(C) SECONDARY ELECTRICAL TRENCH
N.T.S.

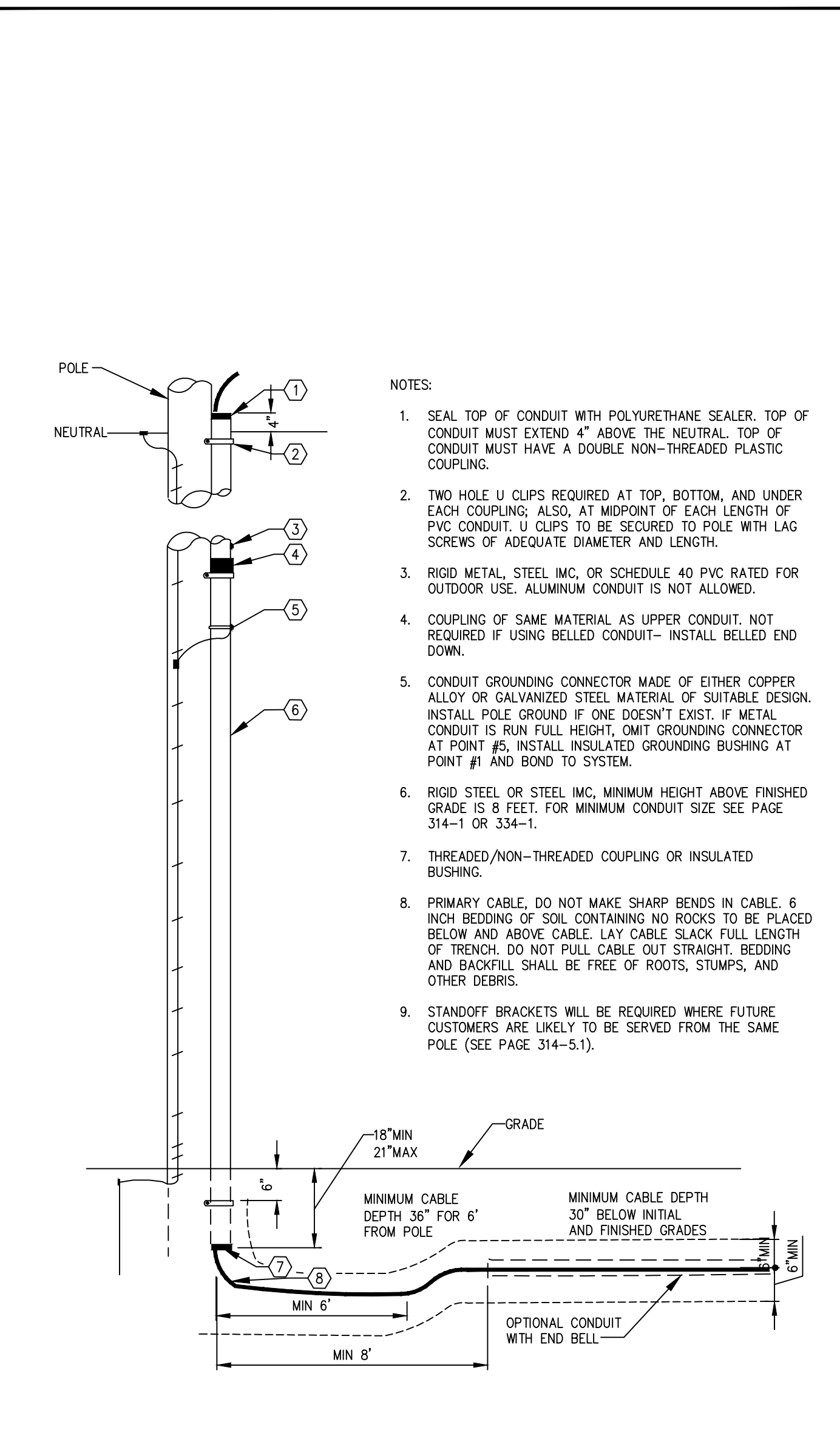


(E) ELECTRICAL PULL BOX DETAIL
N.T.S.

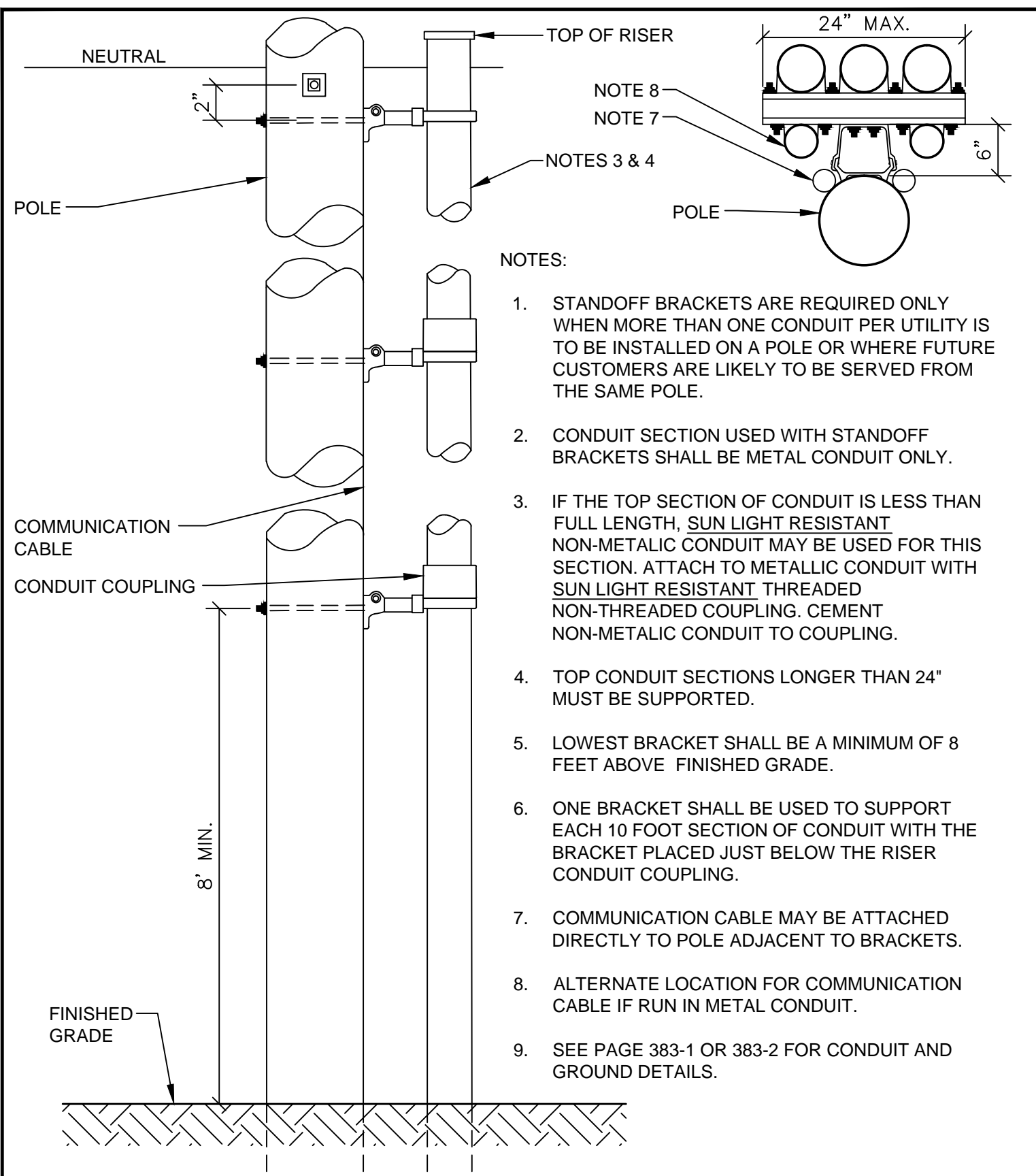


- NOTES:**
- CONCRETE: 4,000 PSI AFTER 28 DAYS.
 - REINFORCING: PAD-#4'S @ 12" O.C. E.W.E.F. BASE-1 MAT OF #4'S @ 12" O.C.
 - AS PER CENTRAL MAINE POWER COMPANY SPECIFICATIONS, AS MANUFACTURED BY SUPERIOR CONCRETE OR EQUAL.

(B) TRANSFORMER PAD DETAIL
N.T.S.



(D) PRIMARY URD RISER CONDUIT DETAIL
N.T.S.



	MATERIALS			
	ALUMA-FORM	QUICK STEEL	QUICK STEEL	PORCELAIN PRODUCTS CO.
QUANTITY AS NEEDED	6-CSO	399228A	339228	8610
CONDUIT STANDOFF BRACKET 4-WAY T-SLOT 48" LONG (CUT TO REQUIRED LENGTH)	6-CSO	399228A	339228	8610
CONDUIT STRAP KIT	2" STK-2	7C2A	7C2	USE QUICK STEEL 7C SERIES CLAMPS OR EQUIVALENT
	2.5" STK-2.5	7C3A	7C3	
	3" STK-3	7C4A	7C4	
	3.5" STK-3.5	7C5A	7C5	
	4" STK-4	7C6A	7C6	
	5" STK-5			

(F) CONDUIT STANDOFF BRACKET FOR MULTIPLE RISERS ON ONE POLE
N.T.S.

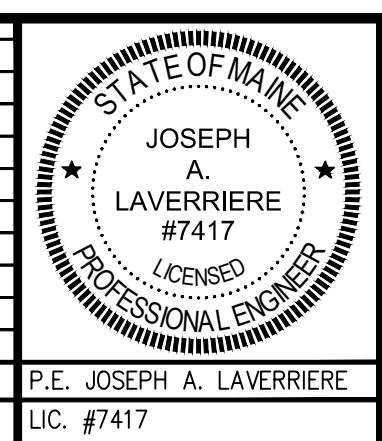
- CONNECT RISER TAPS TO THE APPROPRIATE PHASE AS REQUIRED. IF THE RISER FEEDS A 3Ø DEAD-FRONT PADMOUNT TRANSFORMER END OF THE SPARE CABLE SHOULD BE PARKED ON A BUSHING AND PLACED ON A PARKING STAND. IF THE RISER FEEDS A 3Ø LIVE-FRONT PADMOUNT TRANSFORMER, THEN THE TRANSFORMER END OF THE SPARE CABLE SHOULD BE BOLTED TO THE BUSHING OR PLACED ON THE PIN TERMINAL OF THE SAME PHASE TO WHICH THE OTHER END OF THE CABLE IS ATTACHED. FOR BOTH LIVE-FRONT AND DEAD-FRONT TRANSFORMERS THE RISER END OF THE SPARE CABLE WILL HAVE A TERMINATOR AND WILL CONNECT TO ONE OF THE OUTSIDE CUTOUPS ALONG WITH THE REGULAR PHASE CABLE. IN ALL CASES, THE SPARE CABLE SHOULD BE MARKED "SPARE" ON BOTH ENDS (IN ADDITION TO ALL OTHER REQUIRED MARKINGS).
- THE RISER CONDUIT SHALL EXTEND A MINIMUM OF 4" ABOVE THE NEUTRAL BRACKET BOLT AND/OR 22" ABOVE THE SECONDARY CABLE SPREADER BRACKET BOLT (IF SECONDARIES ARE PRESENT).
- AFTER CABLE INSTALLATION, THE TOP OF THE RISER CONDUIT SHALL BE SEALED AGAINST MOISTURE WITH POLYURETHANE SEALER.
- CUTOUPS FOR TAP LINES SHALL BE PLACED ON THE MAIN LINE JOINT POLE OR ON THE POLE ONE SECTION IN, WHICHEVER IS BETTER FOR THAT PARTICULAR INSTALLATION.
- A LOOP RISER SHALL HAVE ALL CUTOUPS ON THE RISER POLE.
- RISER CONDUIT SHALL BE BONDED TO THE NEUTRAL. SEE PRIMARY URD RISER CONDUIT DETAIL.
- WHEN USING A NON-PORCELAIN TERMINATOR AND A CABLE POSITIONING BRACKET LEAVE 2 TO 3 INCHES OF CABLE BETWEEN THE TOP OF THE BRACKET AND THE BOTTOM OF THE TERMINATOR.
- TWIST CONCENTRIC NEUTRAL WIRES INTO A BUNDLE AND CONNECT TO THE SYSTEM NEUTRAL WIRE.
- CONNECT THE ARRESTER TO THE SYSTEM NEUTRAL WIRE WITH AS SHORT A LEAD AS PRACTICAL.
- USE THE PROPER CABLE TERMINATOR FOR RATED VOLTAGE AND SIZE OF CABLE.

TABLE: CONDUIT SIZES FOR JACKETED CABLE MINIMUM SIZE REQUIRED IN INCHES

CABLE TYPE	CABLE SIZE	NUMBER OF CONDUCTORS				
		1	2	3	4	
15KV	URD	#2 STRANDED	2"	3"	4"	5"
		4/0 XLP	2"	4"	4"	5"
	POWER	500 KCM XLP	3"	5"	5"	6"
		750 KCM XLP	3"	5"	6"	6"
35KV	URD	1/0 XLP	2 1/2"	4"	5"	* 5"
		4/0 XLP	3"	5"	6"	6"
	POWER	500 KCM XLP	3"	5"	7"	7"
		750 KCM XLP	3"	6"	6"	7"

(G) 3 PHASE RISER - GENERAL INFORMATION
N.T.S.

REV	DATE	DESCRIPTION
10	03.13	ISSUED 100% CD SET
9	11.30.12	GMP SET
8	04.18.12	RESUBMITTED TO CITY OF PORTLAND
7	03.05.12	RESUBMITTED TO CITY OF PORTLAND
6	02.10.12	ADDED GRAVEL EMERGENCY ACCESS LANE SECTION
5	01.02.12	RESUBMITTED TO CITY OF PORTLAND
4	01.21.10	ADDED 750 GALLON GREASE TRAP DETAIL
3	11.11.09	SUBMITTED TO CITY OF PORTLAND FOR REVIEW
2	03.12.09	SUBMITTED TO MADEP
1	12.05.08	SUBMITTED TO CITY OF PORTLAND FOR REVIEW



PROJECT: THE INN AT DIAMOND COVE
SHEET TITLE: SITE ELECTRICAL DETAILS
CLIENT: THE INN AT DIAMOND COVE LLC

DeLUCA-HOFFMAN ASSOCIATES, INC.
778 MAIN STREET, SUITE 8
SOUTH PORTLAND, ME 04106
207.775.1121
WWW.DELUCAHOFFMAN.COM

DRAWN: CDD DATE: DEC. 2008
DESIGNED: JAL SCALE: AS NOTED
CHECKED: JAL JOB NO. 2769
FILE NAME: 2769-DET
SHEET: C-9A