

**EXISTING BUILDING**

**BUILDING ADDITION**

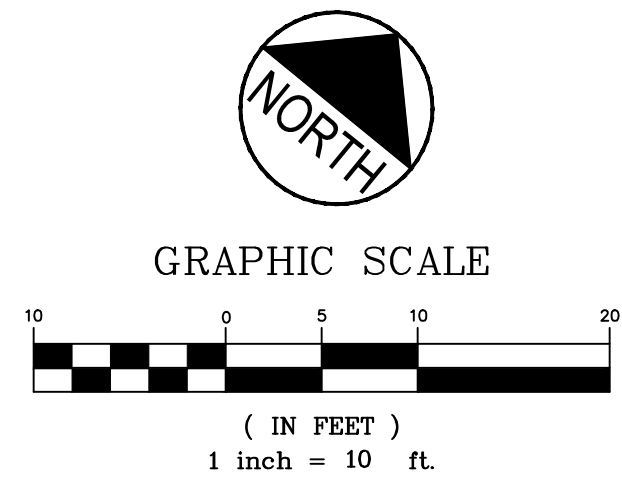
WATER QUALITY FILTER #1  
BOTTOM ELEV. 99.0

EXISTING DOUBLE  
BARRACKS  
BUILDING #46

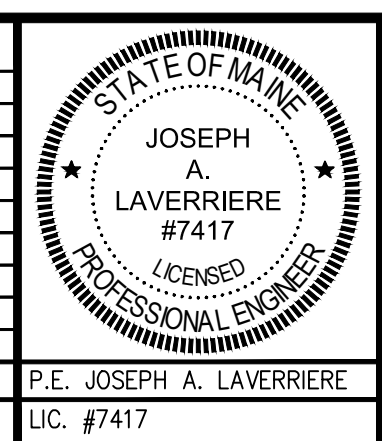
WATER QUALITY FILTER #2  
BOTTOM ELEV. 99.0

**NOTES:**

- SEE SHEET C-5 FOR STORM DRAIN STRUCTURE SCHEDULE & PIPE SCHEDULE.
- THE LOCATION OF THE EXISTING WATER MAIN DEPICTED NEAR THE PROPOSED BUILDING ADDITION IS APPROXIMATE. IT IS THE RESPONSIBILITY OF THE CONTRACTOR TO PROTECT THE WATER MAIN DURING CONSTRUCTION.



REV	DATE	DESCRIPTION
9	03.13	ISSUED 100% CD SET
8	11.30.12	GMP SET
7	04.18.12	RESUBMITTED TO CITY OF PORTLAND
6	03.05.12	RESUBMITTED TO CITY OF PORTLAND
5	01.17.12	ADDED BOLLARD LIGHTS
4	01.02.12	RESUBMITTED TO CITY OF PORTLAND
3	11.11.09	SUBMITTED TO CITY OF PORTLAND FOR REVIEW
2	03.12.09	SUBMITTED TO MADEP
1	12.05.08	SUBMITTED TO CITY OF PORTLAND FOR REVIEW



PROJECT  
**THE INN AT DIAMOND COVE**

SHEET TITLE  
**DETAILED GRADING PLAN  
(10 SCALE)**

CLIENT  
**THE INN AT DIAMOND COVE LLC**

**DH** DeLUCA-HOFFMAN ASSOCIATES, INC.  
778 MAIN STREET, SUITE 8  
SOUTH PORTLAND, ME 04106  
207.775.1121  
WWW.DELUCAHOFFMAN.COM

DRAWN: CDD DATE: DEC. 2008  
DESIGNED: JAL SCALE: 1" = 10'  
CHECKED: JAL JOB NO. 2769  
FILE NAME: 2769-SP  
SHEET **C-6**

E:\2769 Diamond Cove\Cadd\dwg\CONSTRUCTION SET\2769-SP.DWG. C-6 DETAILED GRADING. 3/14/2013 8:55:20 AM. 1:1