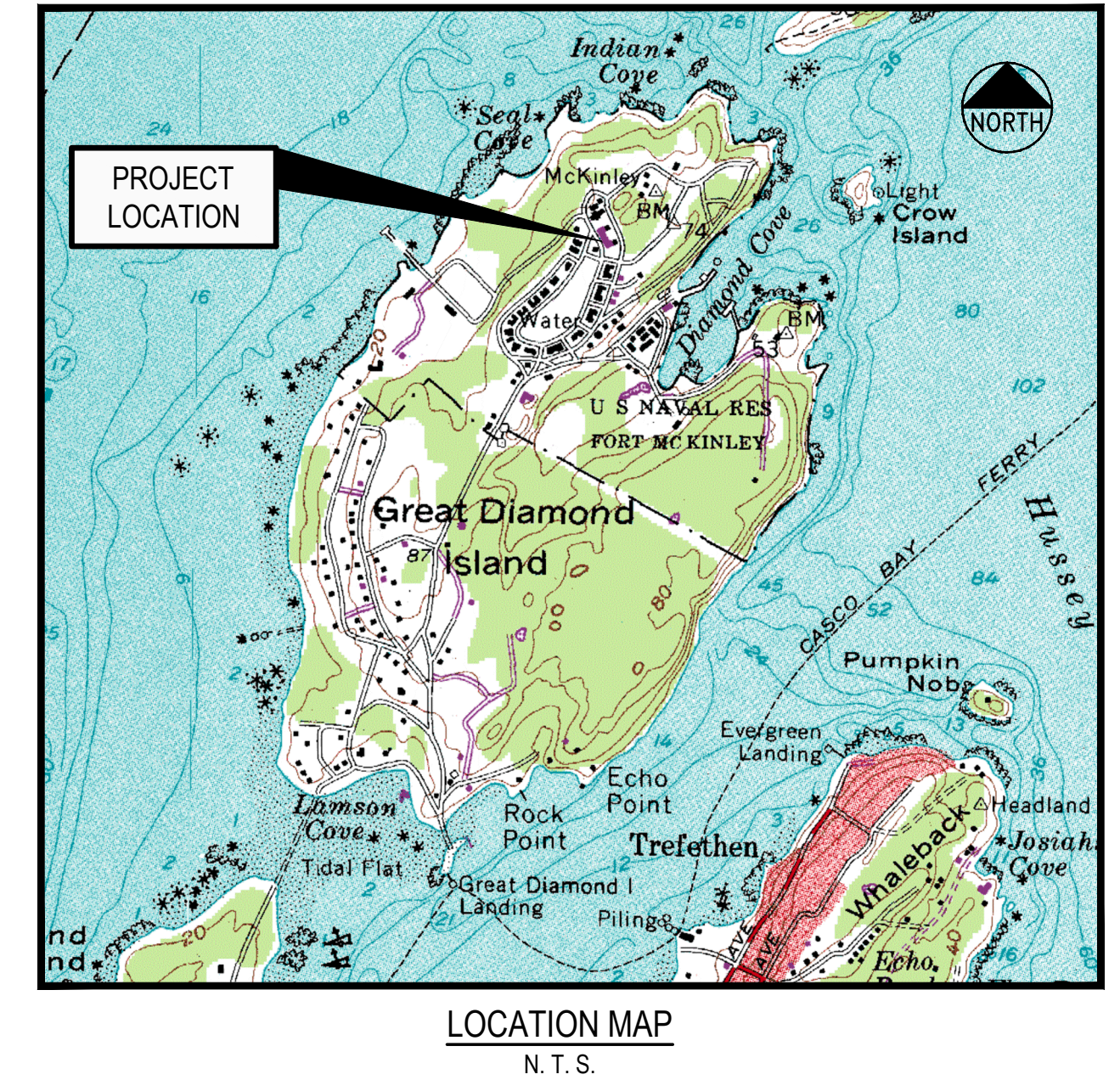


PROJECT PARCEL SITE
 PORTLAND TAX ASSESSOR'S MAP & LOT NUMBERS

MAP	BLOCK	LOT
83-E	E	460

OWNER/ APPLICANT:
 The Inn at Diamond Cove LLC
 c/o Bateman Partners LLC
 P.O. Box 3572
 Portland, Maine 04104
 TEL 207.772.2992
 FAX 207.772.1881

SITE DEVELOPMENT PLANS FOR THE INN AT DIAMOND COVE GREAT DIAMOND ISLAND PORTLAND, MAINE MARCH 2013



INDEX

- C-1 COVER SHEET
- C-2 GENERAL NOTES & LEGEND
- C-3 EXISTING CONDITIONS & DEMOLITION PLAN
- C-4 SITE LAYOUT & UTILITY PLAN
- C-5 OVERALL GRADING, DRAINAGE & EROSION CONTROL PLAN
- C-6 DETAILED GRADING PLAN (10 SCALE)
- C-7 LANDSCAPE PLAN
- C-8 EROSION CONTROL DETAILS & NARRATIVE
- C-9 SITE DETAILS
- C-9A SITE ELECTRICAL DETAILS
- C-10 SITE DETAILS
- C-11 WATER SYSTEM IMPROVEMENT PLAN

UTILITIES

- WATER**
 ATTN: RICO SPUGNARDI
 PORTLAND WATER DISTRICT
 225 DOUGLASS STREET
 P.O. BOX 3553
 PORTLAND, MAINE 04104-3553
 TEL: 207.761.8310
- SEWER**
 PRIVATELY OWNED
 DIAMOND COVE HOMEOWNERS ASSOC.
 AND THE INN AT DIAMOND COVE LLC
- POWER**
 ATTN: JEFF HANSCOM
 CENTRAL MAINE POWER COMPANY
 162 CANCO ROAD
 PORTLAND, MAINE 04103
 TEL: 207.791.1023
- TELEPHONE**
 ATT: SUE SERRETTE
 FAIRPOINT COMMUNICATIONS
 ONE DAVIS FARM ROAD
 PORTLAND, MAINE 04103
 TEL: 207.797.1842

PERMITS

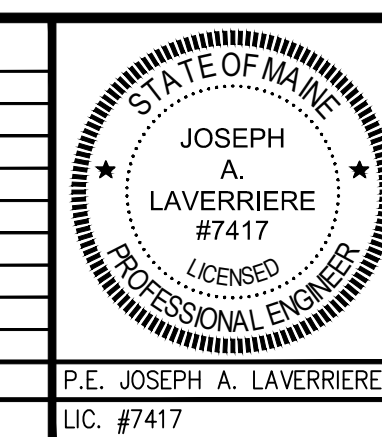
- LOCAL**
 SITE PLAN /
 SUBDIVISION PERMIT
- GOVERNING BODY**
 CITY OF PORTLAND PLANNING AUTHORITY
 PLANNING AND URBAN DEVELOPMENT DEPARTMENT
 389 CONGRESS STREET
 PORTLAND, MAINE 04101
 TEL: 207.874.8683
- STATUS**
 SUBMITTED JANUARY 2, 2012
 APPROVED MARCH 13, 2012
- BUILDING PERMIT**
- CITY OF PORTLAND CODE ENFORCEMENT OFFICE**
 PLANNING AND URBAN DEVELOPMENT DEPARTMENT
 389 CONGRESS STREET
 PORTLAND, MAINE 04101
 TEL: 207.874.8683
- TO BE FILED PRIOR TO CONSTRUCTION**
- STATE**
 SITE LOCATION OF
 DEVELOPMENT PERMIT
 AMENDMENT
 (# L-13160)
- GOVERNING BODY**
 MAINE DEPARTMENT OF ENVIRONMENTAL PROTECTION
 312 CANCO ROAD
 PORTLAND, MAINE 04103
 TEL: 207.822.6300
- STATUS**
 SUBMITTED MARCH 12, 2009
 APPROVED SEPTEMBER 23, 2009
 AMENDED OCTOBER 12, 2011
 AMENDED MARCH 3, 2012
 AMENDED SEPTEMBER 27, 2012
- MAINE POLLUTANT DISCHARGE
 ELIMINATION SYSTEM (MPDES)
 (MPDES # ME0023248)**
- MAINE DEPARTMENT OF ENVIRONMENTAL PROTECTION**
 STATE HOUSE STATION 17
 AUGUSTA, MAINE 04333-0017
 TEL: 207.287.2111
- COMMERCIAL WASTEWATER
 DISCHARGE LICENSE
 (# W006931)**
- MAINE DEPARTMENT OF ENVIRONMENTAL PROTECTION**
 STATE HOUSE STATION 17
 AUGUSTA, MAINE 04333-0017
 TEL: 207.287.2111
- STATUS**
 SUBMITTED DECEMBER 31, 2008
 APPROVED SEPTEMBER 15, 2009
 AMENDED OCTOBER 21, 2011
 AMENDED SEPTEMBER 14, 2012

PREPARED BY

- ARCHITECT**
 Archetype, P.A.
 48 UNION WHARF
 PORTLAND, MAINE 04101
 TEL: 207.772.6022
 FAX: 207.772.4056
 ATTN: DAVID LLOYD
- CIVIL ENGINEER:**
 DeLuca-Hoffman Associates, Inc.
 778 MAIN STREET, SUITE 8
 SOUTH PORTLAND, MAINE 04106
 TEL: 207.775.1121
 FAX: 207.879.0896
- TOPOGRAPHIC SURVEY:**
 DeLuca-Hoffman Associates, Inc.
 778 MAIN STREET, SUITE 8
 SOUTH PORTLAND, MAINE 04106
 TEL: 207.775.1121
 FAX: 207.879.0896

I HEREBY ACKNOWLEDGE THAT THESE PLANS AND SPECIFICATIONS WERE PREPARED UNDER MY DIRECT SUPERVISION, AND THAT I AM A DULY REGISTERED PROFESSIONAL ENGINEER UNDER THE LAWS OF THE STATE OF MAINE AND THAT I AM COMPETENT TO PREPARE THIS DOCUMENT.

REV	DATE	DESCRIPTION
9	03.13.13	ISSUED 100% CD SET
8	11.30.12	GMP SET
7	04.18.12	RESUBMITTED TO CITY OF PORTLAND
6	03.05.12	RESUBMITTED TO CITY OF PORTLAND
5	01.17.12	REVISED SEWER UTILITY CONTACT INFO.
4	01.02.12	RESUBMITTED TO CITY OF PORTLAND
3	11.11.09	SUBMITTED TO CITY OF PORTLAND FOR REVIEW
2	03.12.09	SUBMITTED TO MADEP
1	12.05.08	SUBMITTED TO CITY OF PORTLAND FOR REVIEW



PROJECT
 THE INN AT DIAMOND COVE

SHEET TITLE
 COVER SHEET

CLIENT
 THE INN AT DIAMOND COVE LLC

DeLUCA-HOFFMAN ASSOCIATES, INC.
 778 MAIN STREET, SUITE 8
 SOUTH PORTLAND, ME 04106
 207.775.1121
 WWW.DELUCAHOFFMAN.COM

DRAWN: CDD DATE: DEC. 2008
 DESIGNED: JAL SCALE: AS NOTED
 CHECKED: JAL JOB NO. 2769
 FILE NAME: 2769-COV
 SHEET: C-1