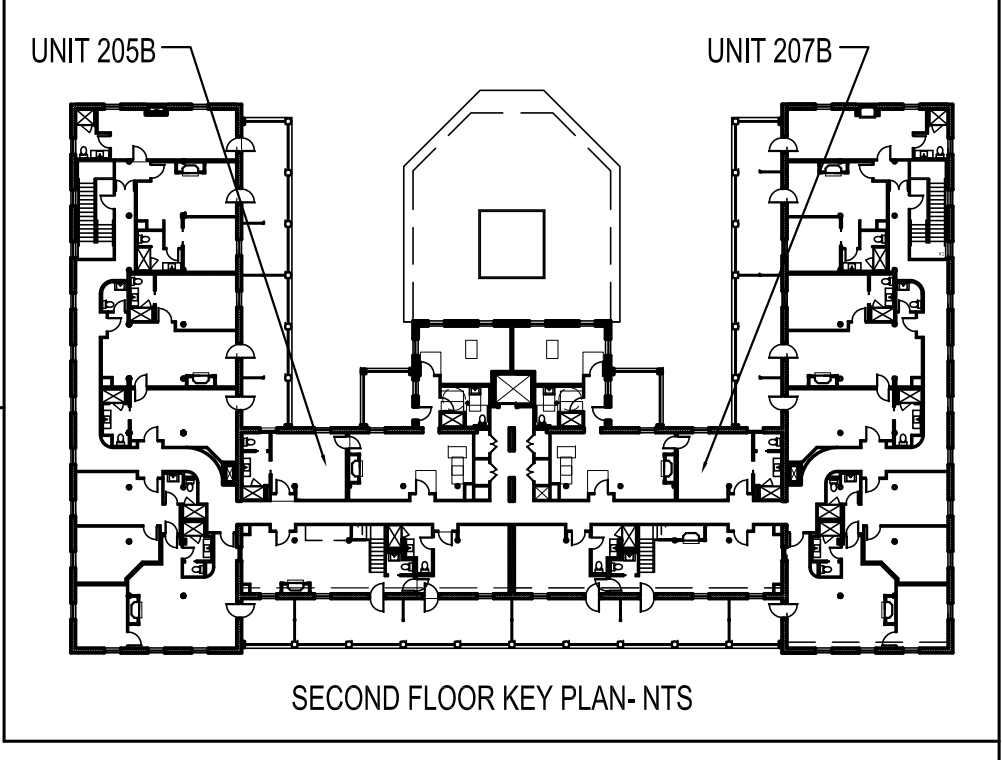


NOTES:  
 -UNIT 205 B SHOWN- 207 B IS  
 MIRRORED  
 -REFER TO M1.00 FOR  
 MILLWORK DETAILS



Prepared For:  
**The Inn at Diamond  
 Cove, LLC.**  
 PO BOX 3572  
 PORTLAND, ME 04101

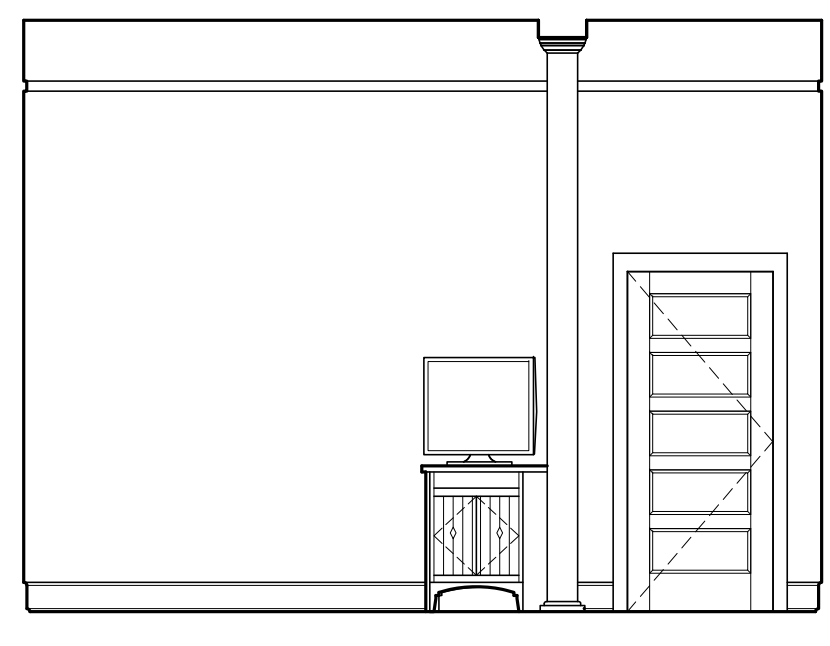
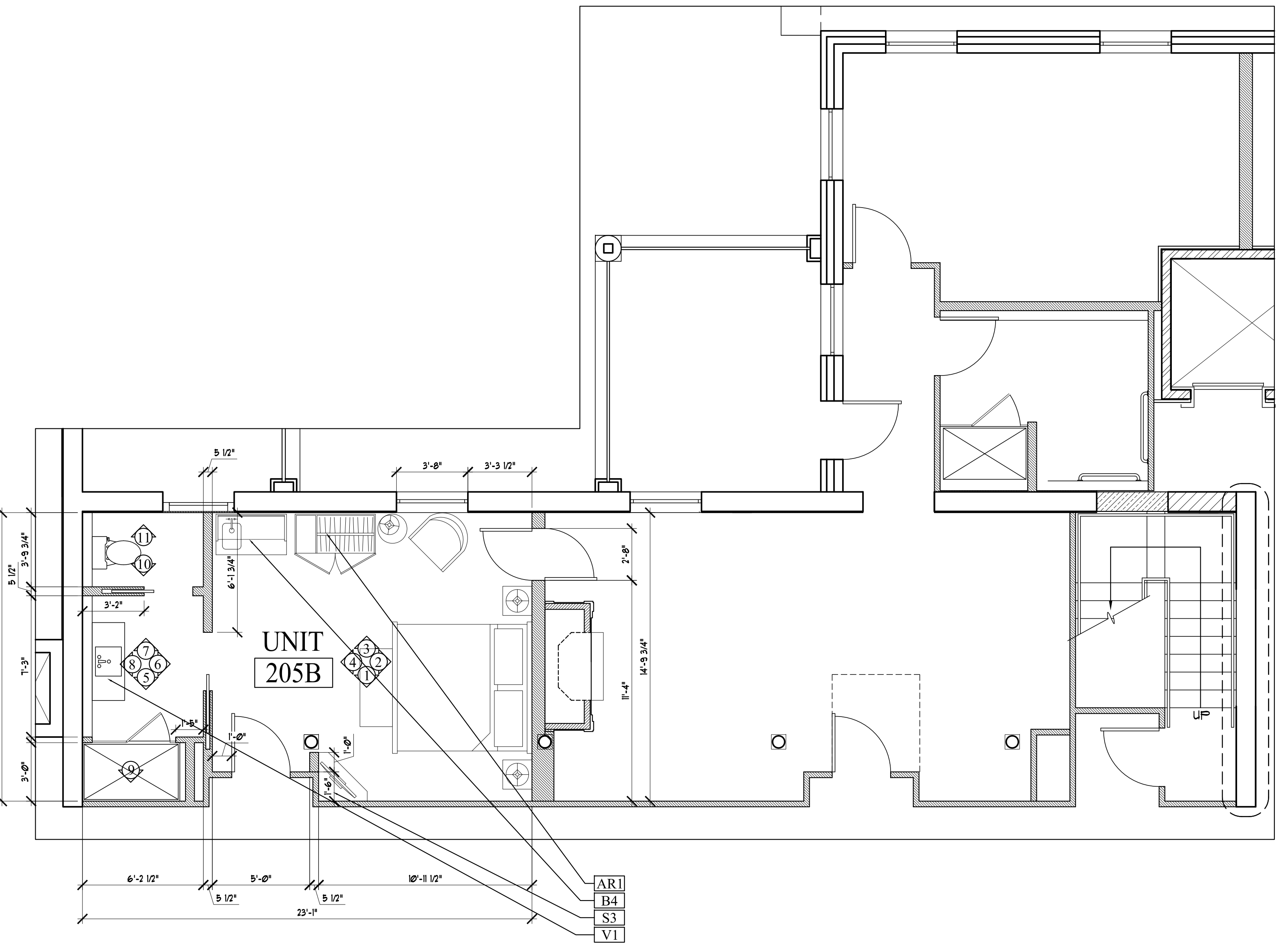
Interior Designer:  
**truexcellins**  
 INTERIORS  
 208 BATTERY STREET BURLINGTON, VERMONT 05401 USA  
 Phone 802.686.2775 Fax 802.247.1076  
 ARCHITECTURE | INTERIOR DESIGN | truxcellins.com

Architect:  
**ARCHETYPE**  
 architects  
 48 Union Wharf Portland, Maine 04101  
 (207) 772-6022 Fax (207) 772-4056

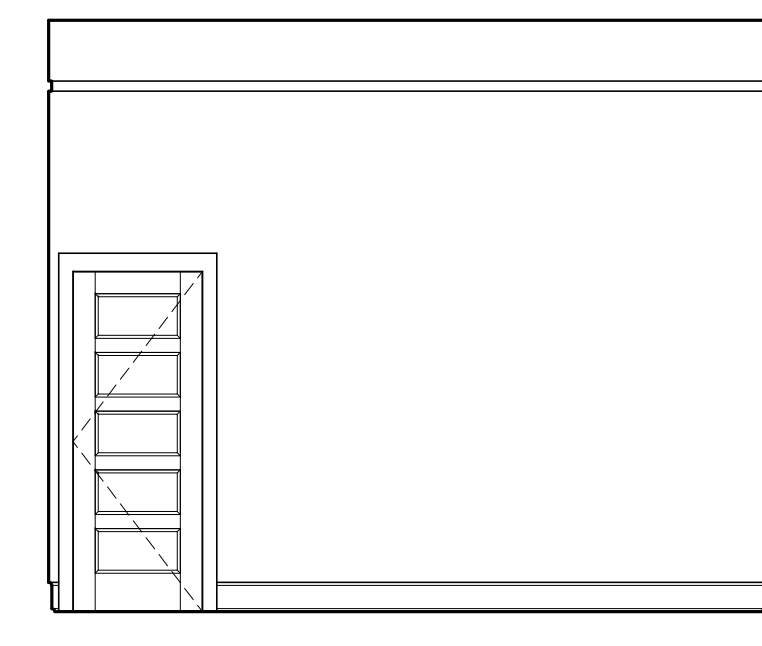
Project:  
**THE INN AT  
 DIAMOND COVE,  
 LLC**  
 MCKINLEY COURT  
 GREAT DIAMOND ISLAND, MAINE

Revisions:

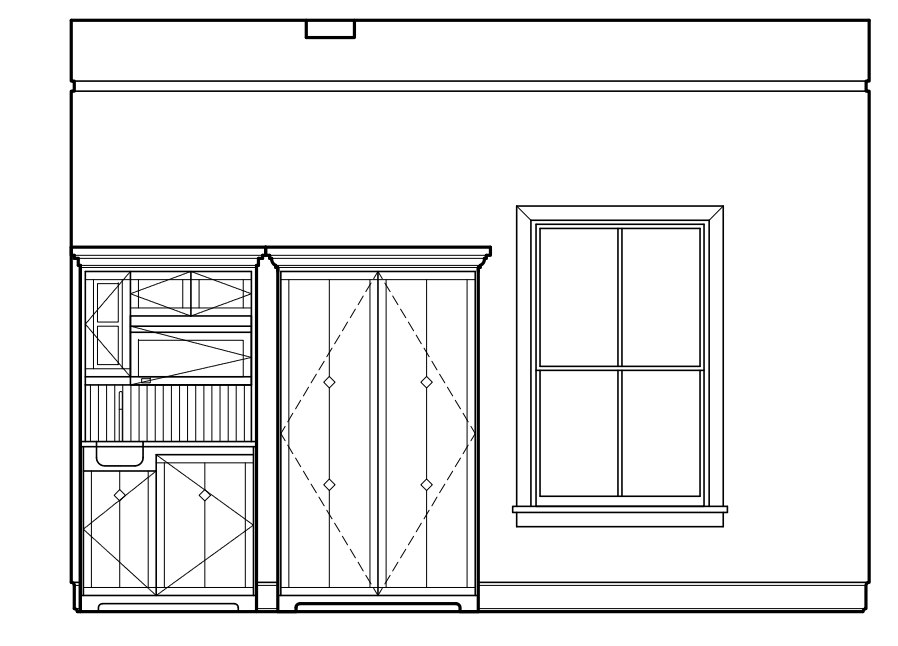

Date: 04 March 2013  
 Scale: As Noted  
**INTERIOR  
 ELEVATIONS**  
**UNIT 205 B, 207 B**



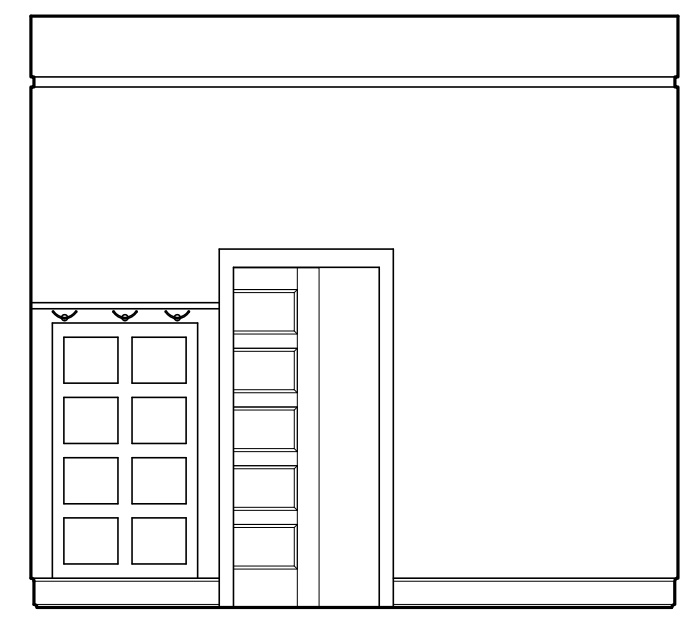
1 | INTERIOR ELEVATION UNIT 205B  
 1/4"=1'-0"



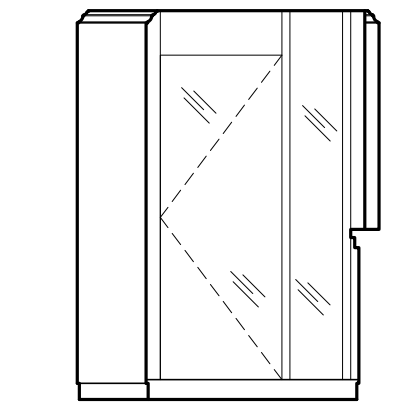
2 | INTERIOR ELEVATION UNIT 205B  
 1/4"=1'-0"



3 | INTERIOR ELEVATION UNIT 205B  
 1/4"=1'-0"



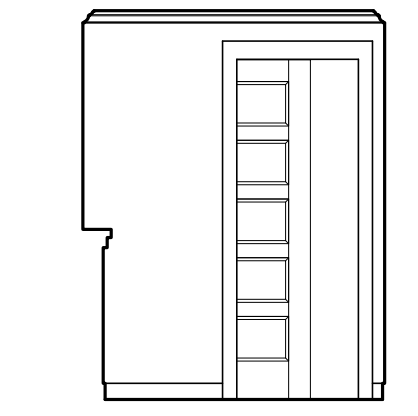
4 | INTERIOR ELEVATION UNIT 205B  
 1/4"=1'-0"



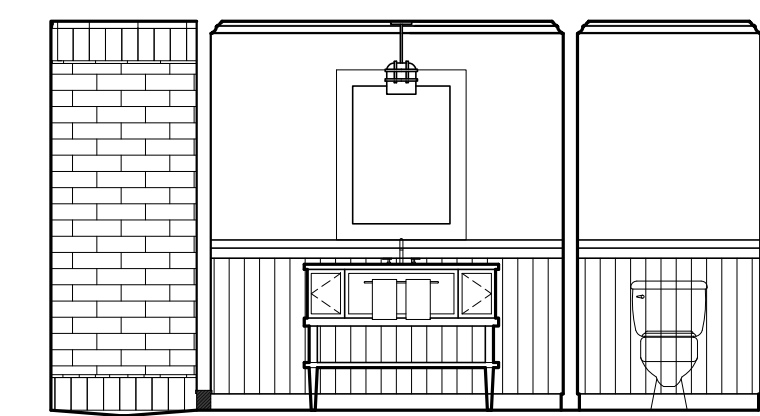
5 | INTERIOR ELEVATION UNIT 205B  
 1/4"=1'-0"



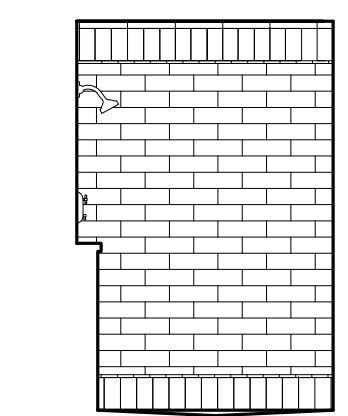
6 | INTERIOR ELEVATION UNIT 205B  
 1/4"=1'-0"



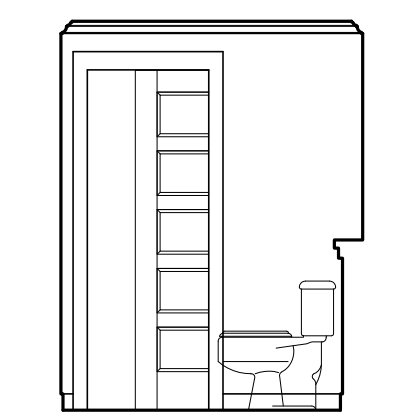
7 | INTERIOR ELEVATION UNIT 205B  
 1/4"=1'-0"



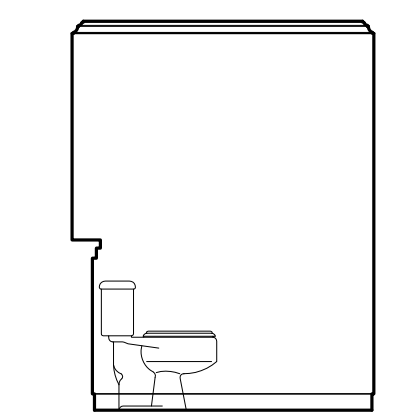
8 | INTERIOR ELEVATION UNIT 205B  
 1/4"=1'-0"



9 | INTERIOR ELEVATION UNIT 205B  
 1/4"=1'-0"



10 | INTERIOR ELEVATION UNIT 205B  
 1/4"=1'-0"



10 | INTERIOR ELEVATION UNIT 205B  
 1/4"=1'-0"

**A9.22**