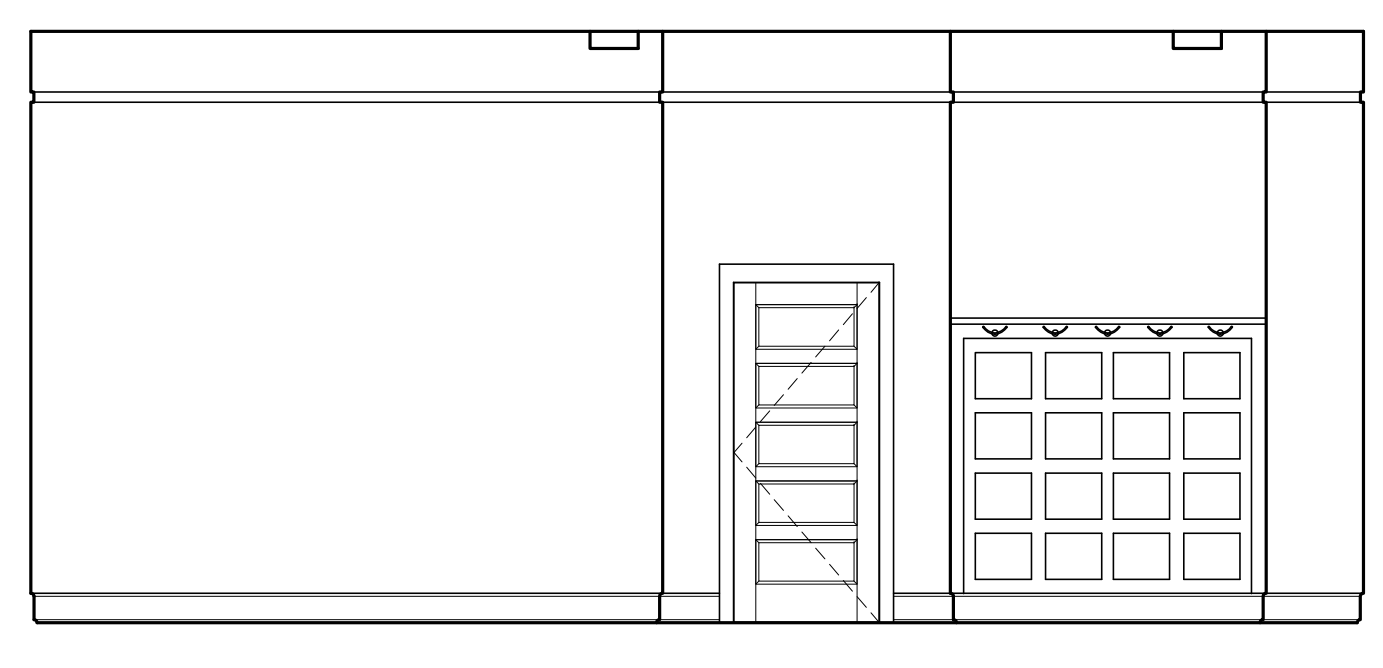
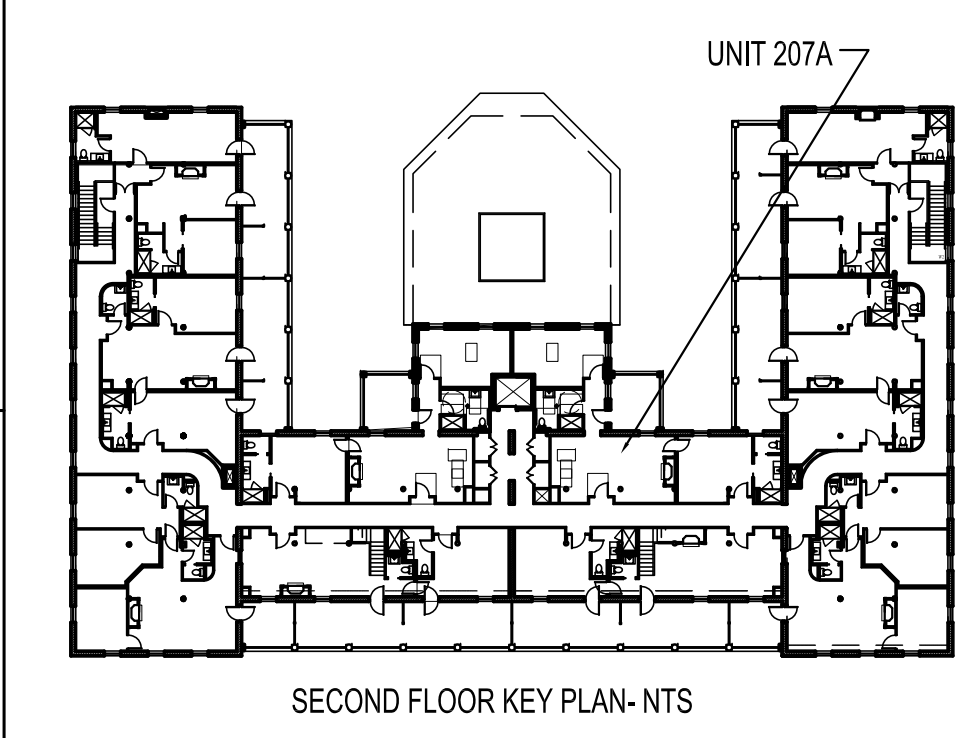
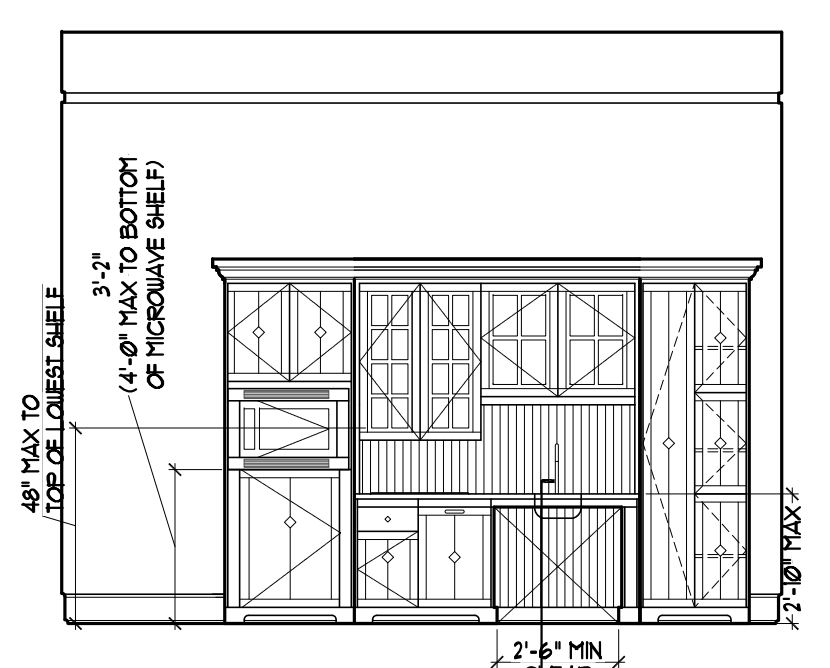


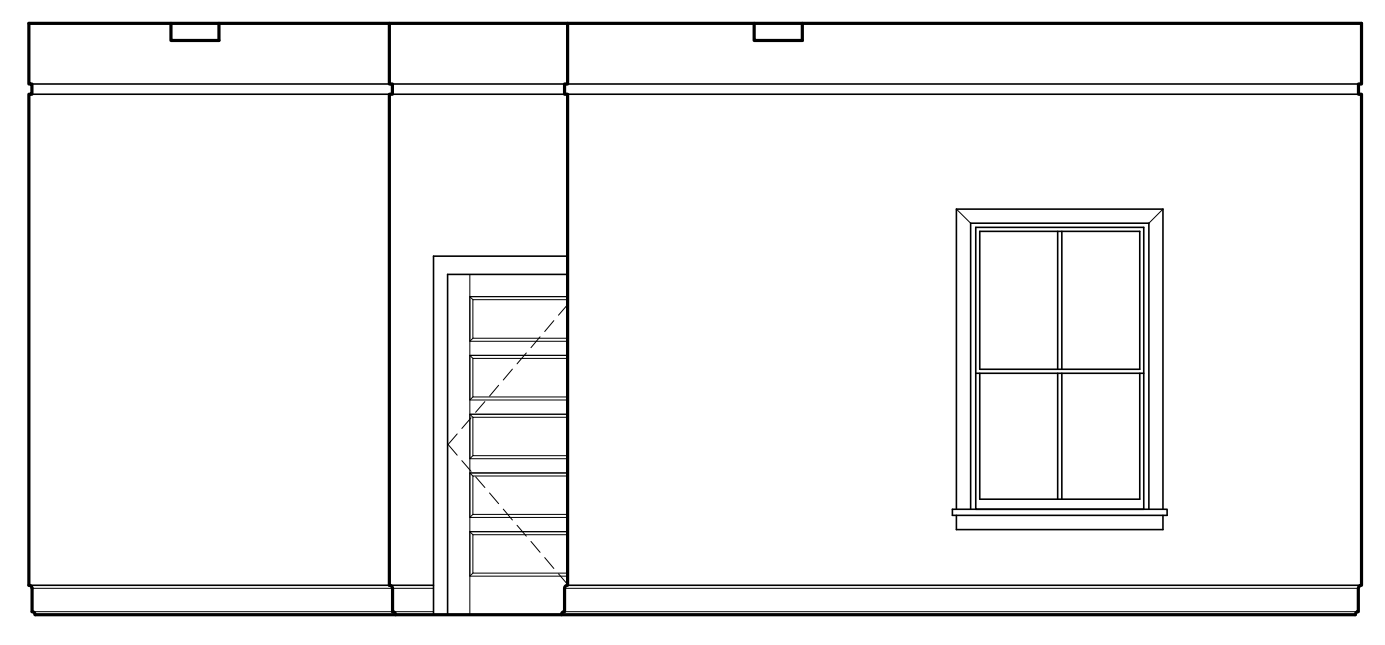
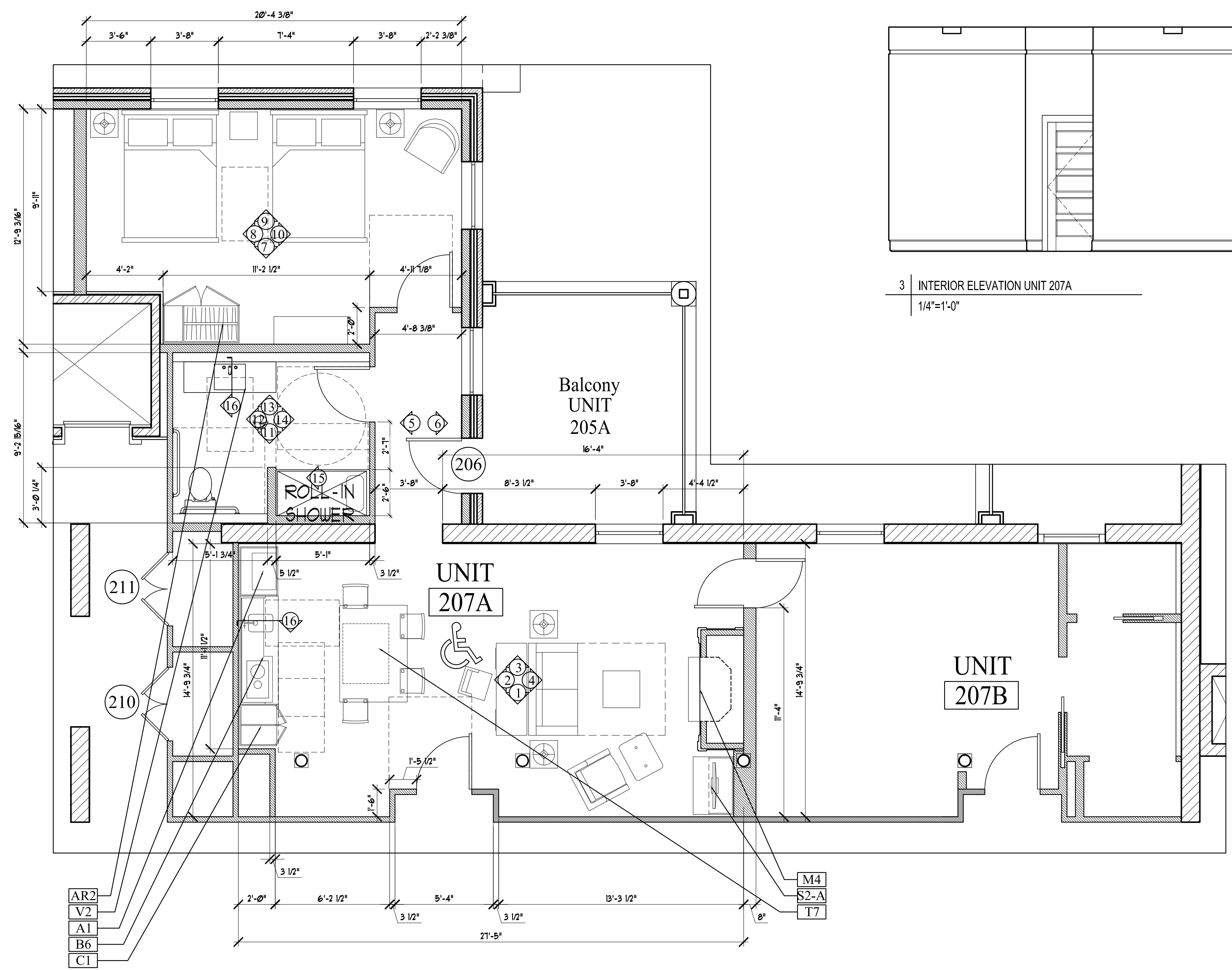
NOTES:
-REFER TO M1.00 FOR
MILLWORK DETAILS



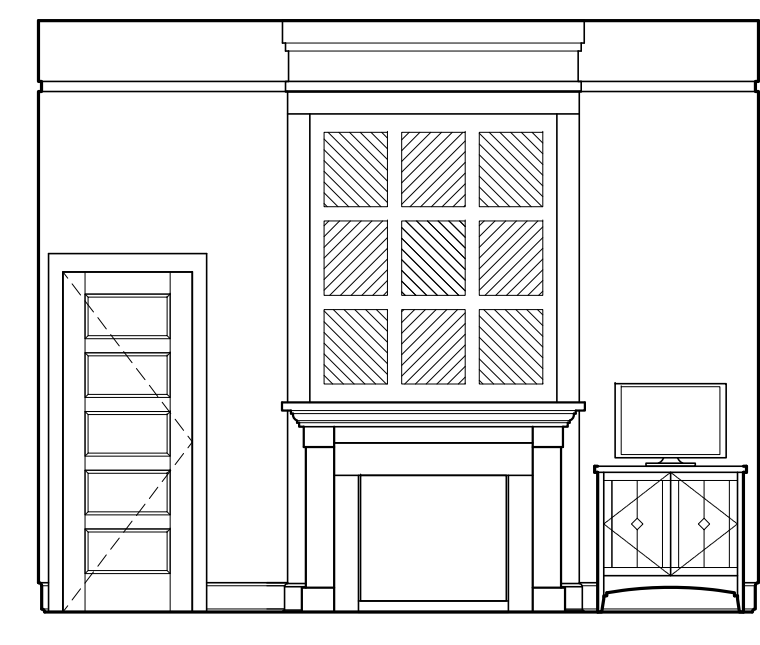
1 INTERIOR ELEVATION UNIT 207A
1/4"=1'-0"



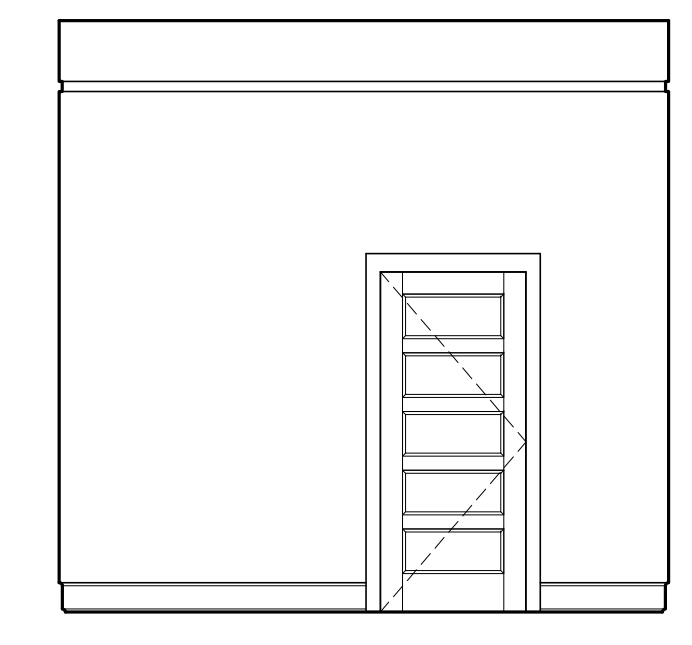
2 INTERIOR ELEVATION UNIT 207A
1/4"=1'-0"



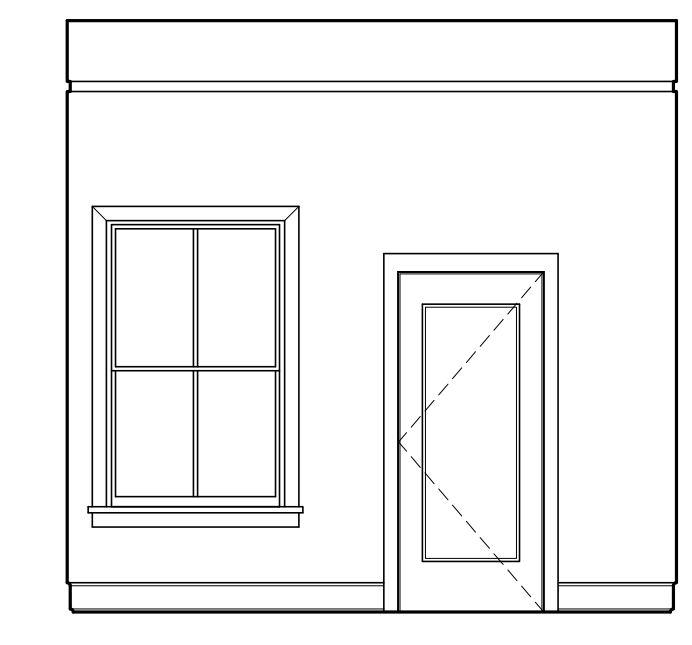
3 INTERIOR ELEVATION UNIT 207A
1/4"=1'-0"



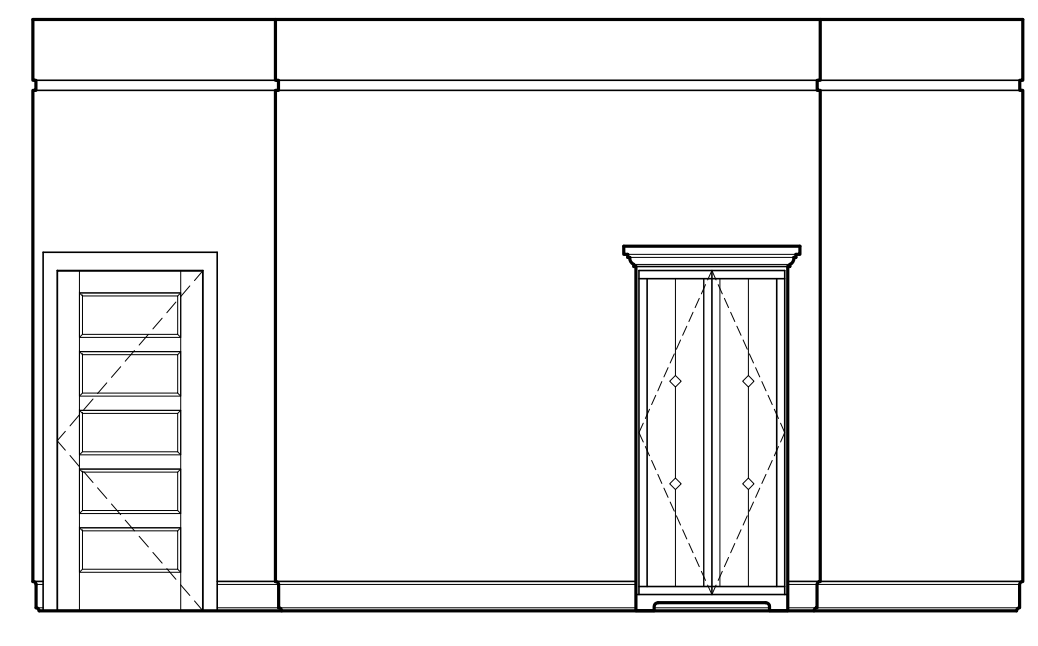
4 INTERIOR ELEVATION UNIT 207A
1/4"=1'-0"



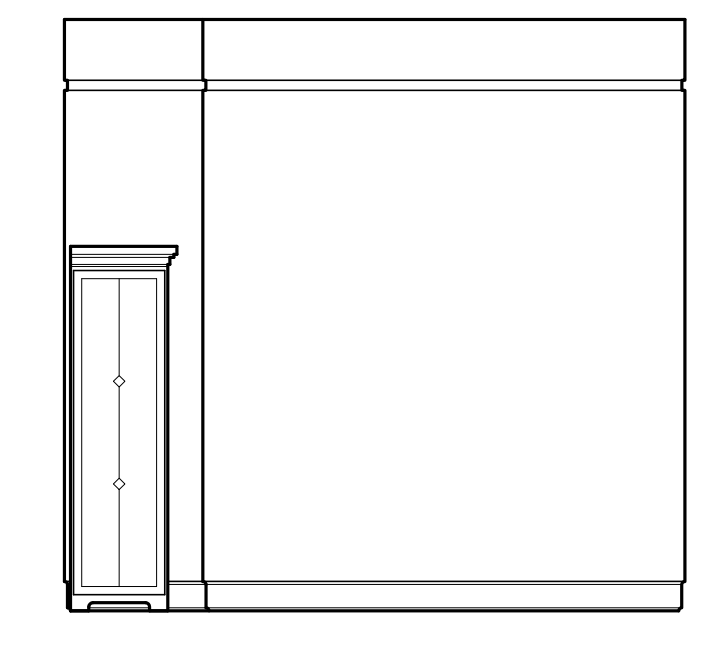
5 INTERIOR ELEVATION UNIT 207A
1/4"=1'-0"



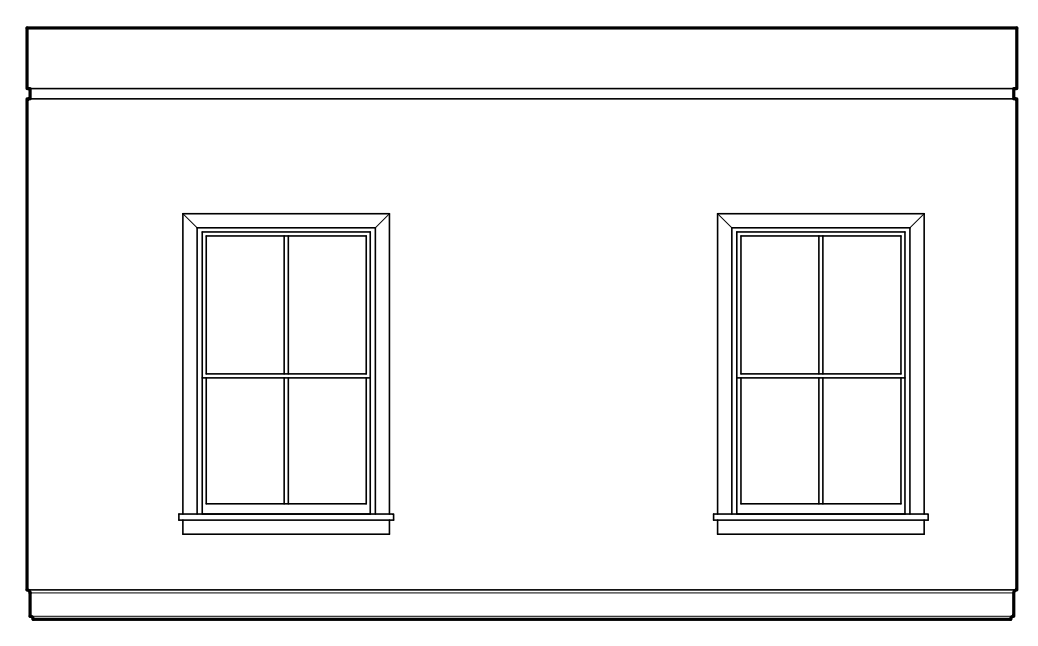
6 INTERIOR ELEVATION UNIT 207A
1/4"=1'-0"



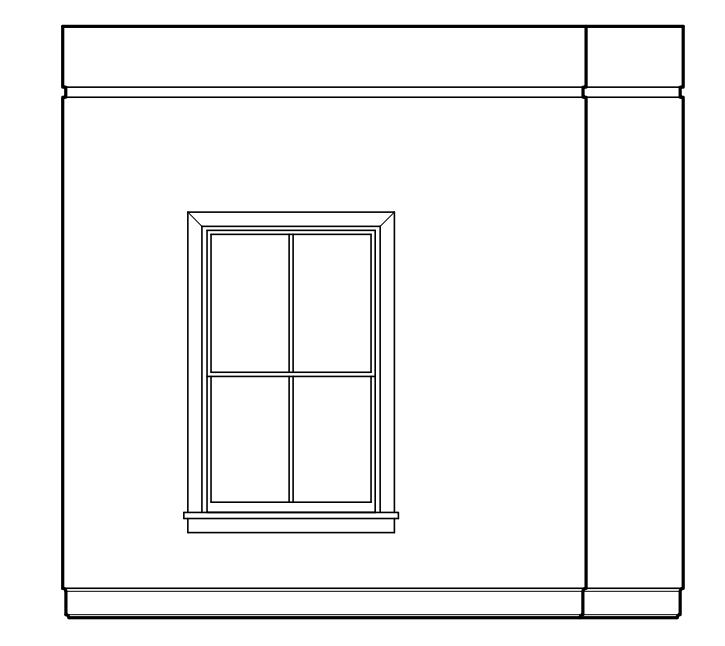
7 INTERIOR ELEVATION UNIT 207A
1/4"=1'-0"



8 INTERIOR ELEVATION UNIT 207A
1/4"=1'-0"

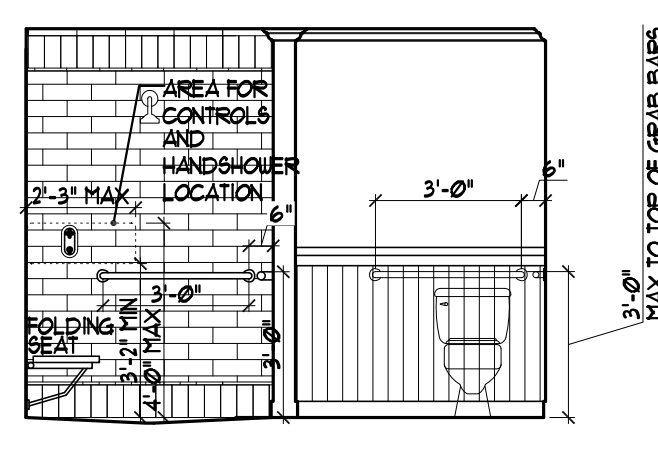


9 INTERIOR ELEVATION UNIT 207A
1/4"=1'-0"

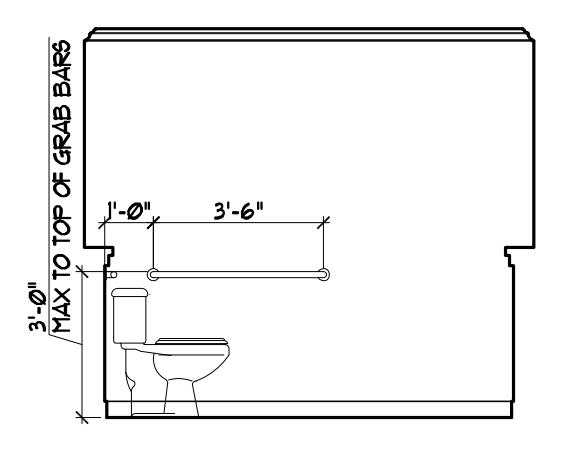


10 INTERIOR ELEVATION UNIT 207A
1/4"=1'-0"

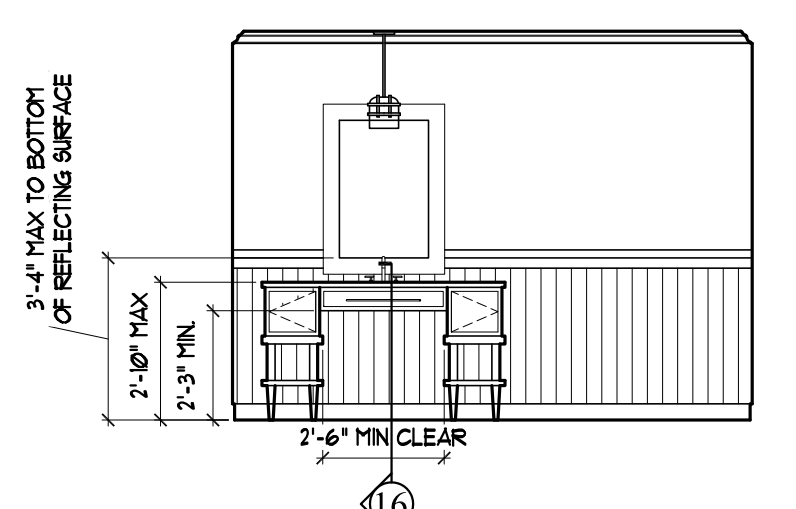
NOTE:
INTERIOR ACCESSIBILITY DETAILS
IN UNIT 105 B WILL BE THE SAME
AS THESE DETAILS FOR UNIT 207A



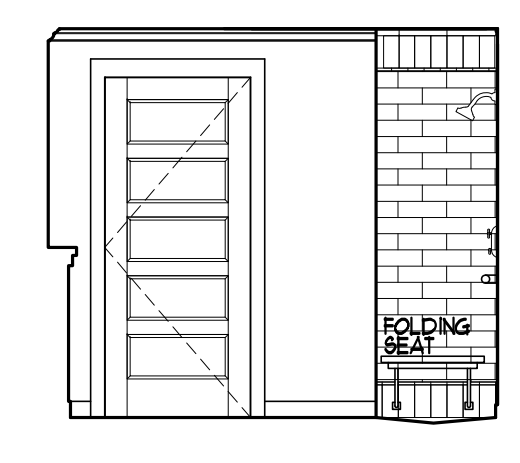
11 INTERIOR ELEVATION UNIT 207A
1/4"=1'-0"



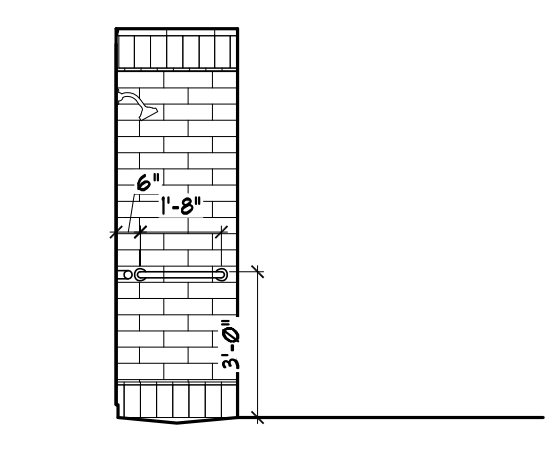
12 INTERIOR ELEVATION UNIT 207A
1/4"=1'-0"



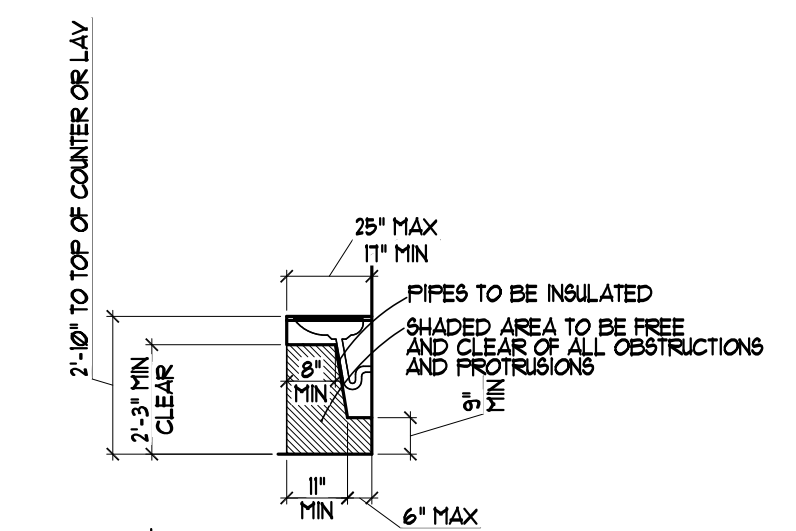
13 INTERIOR ELEVATION UNIT 207A
1/4"=1'-0"



14 INTERIOR ELEVATION UNIT 207A
1/4"=1'-0"



15 INTERIOR ELEVATION UNIT 207A
1/4"=1'-0"



16 SECTION THROUGH LAV/VANITY
1/4"=1'-0"

Prepared For:
The Inn at Diamond Cove, LLC.
PO BOX 3572
PORTLAND, ME 04101

Interior Designer:
truexcollins
INTERIORS
208 BATTERY STREET BURLINGTON, VERMONT 05401 USA
Phone 802-688-2775 ©2012-2013
ARCHITECTURE INTERIOR DESIGN TRUEXCOLLINS.COM

Architect:
ARCHETYPE architects
48 Union Wharf Portland, Maine 04101
(207) 772-6022 Fax (207) 772-4056

Project:
THE INN AT DIAMOND COVE, LLC
MCKINLEY COURT
GREAT DIAMOND ISLAND, MAINE

Scale: As Noted

Date: 04 March 2013

Revisions:

INTERIOR ELEVATIONS UNIT 207A

A9.21a