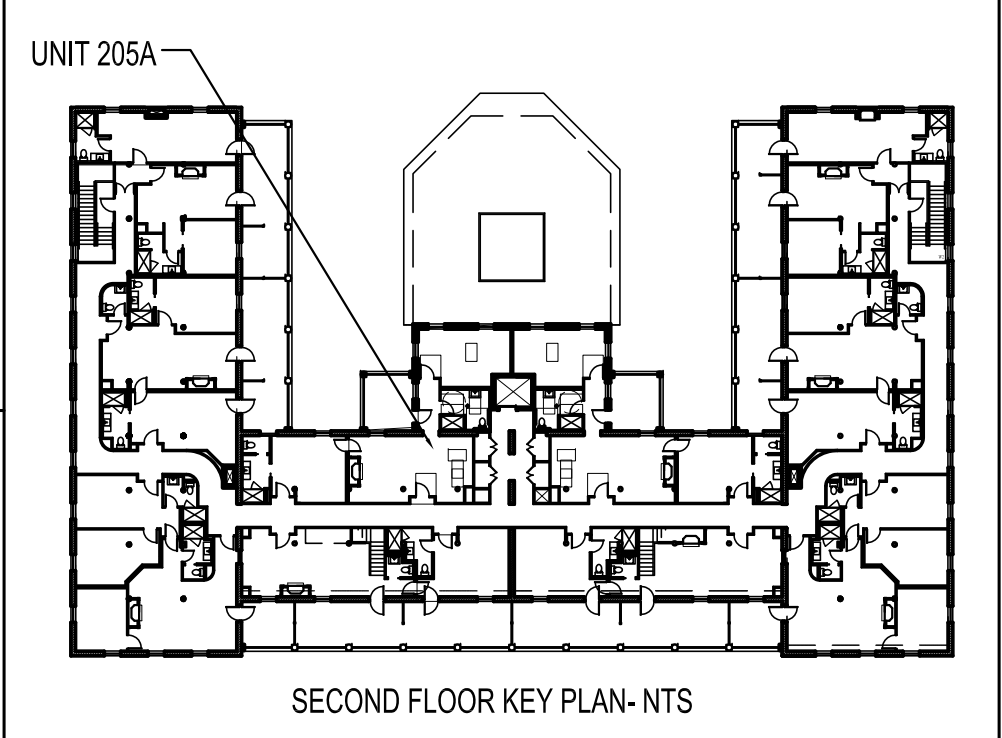
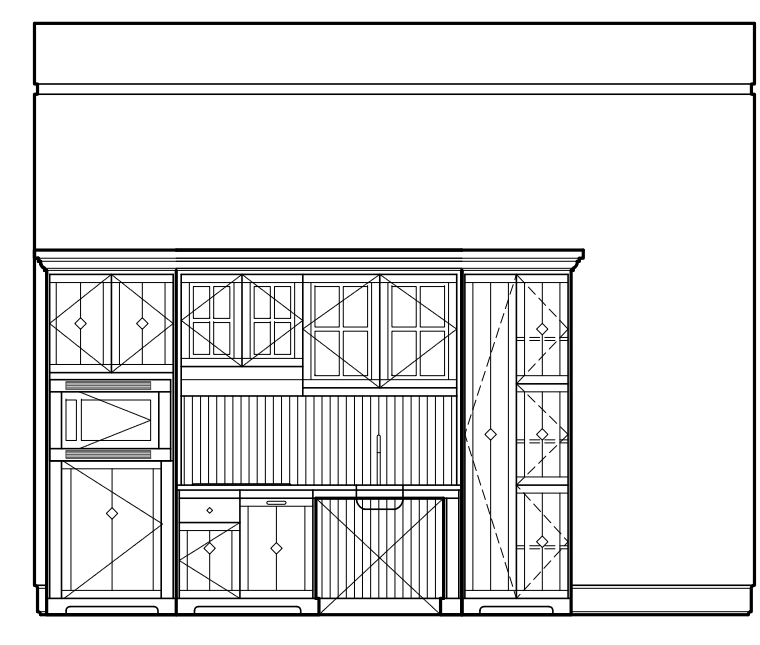


1 | INTERIOR ELEVATION UNIT 205A
1/4"=1'-0"

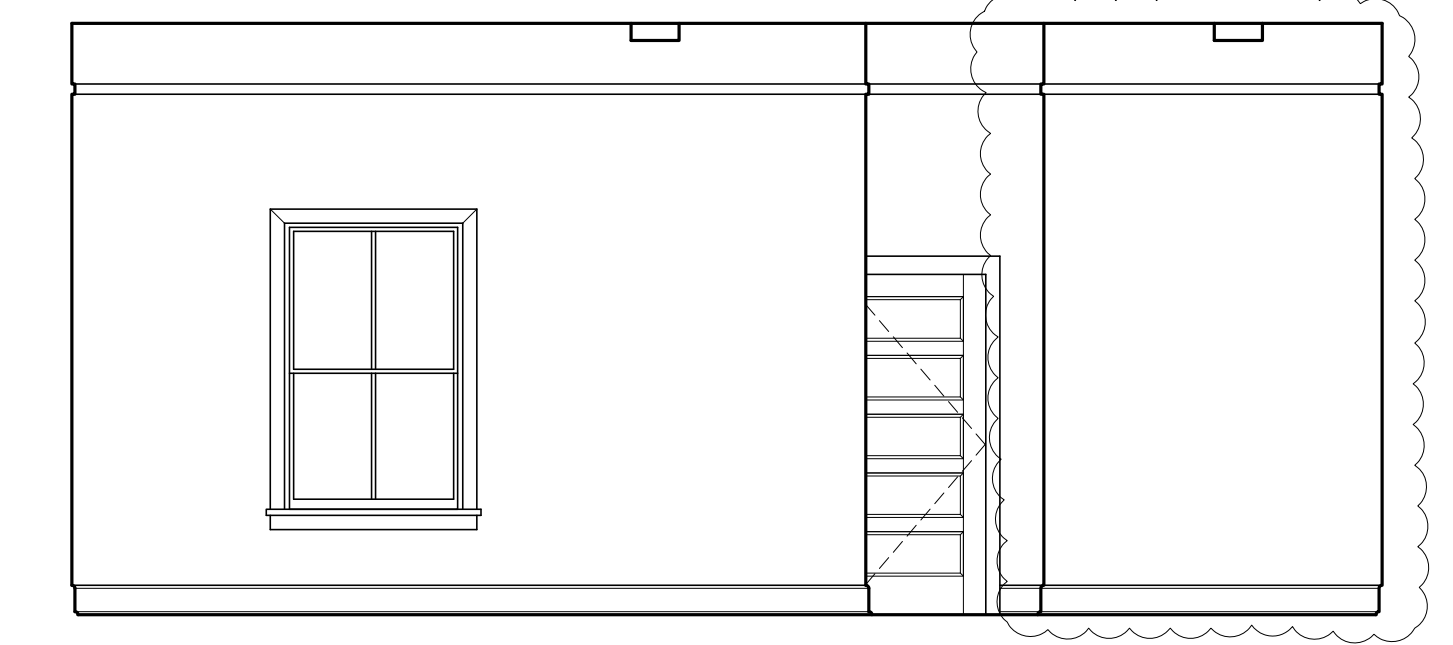
NOTES:
-REFER TO M1.00 FOR
MILLWORK DETAILS



SECOND FLOOR KEY PLAN-NTS



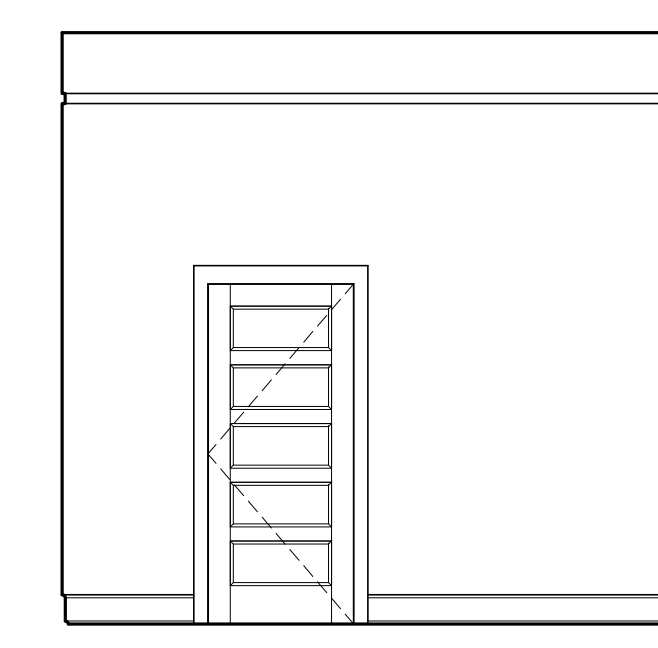
2 | INTERIOR ELEVATION UNIT 205A
1/4"=1'-0"



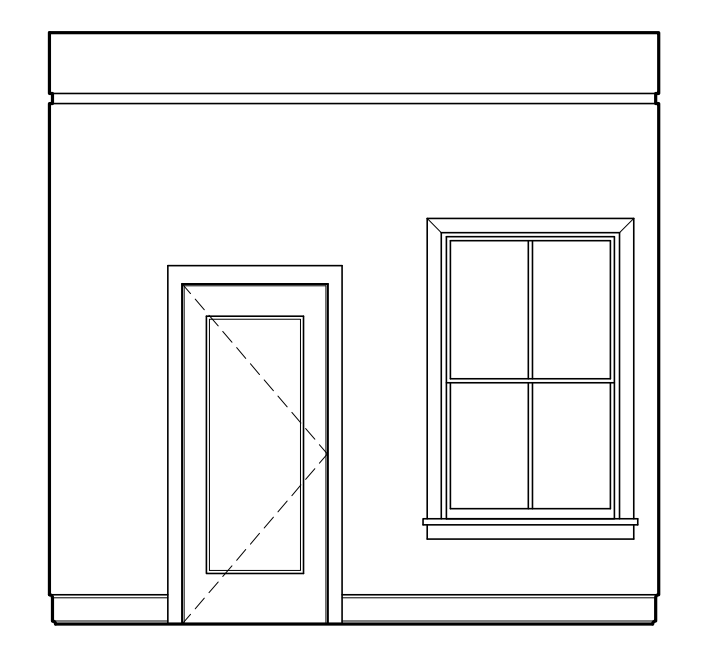
3 | INTERIOR ELEVATION UNIT 205A
1/4"=1'-0"



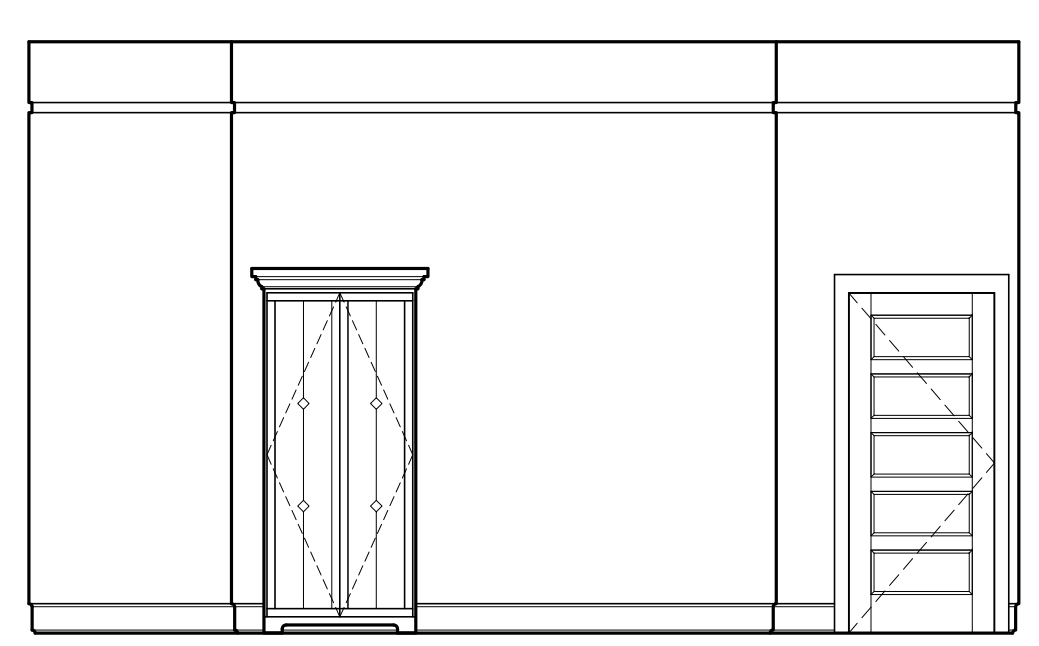
4 | INTERIOR ELEVATION UNIT 205A
1/4"=1'-0"



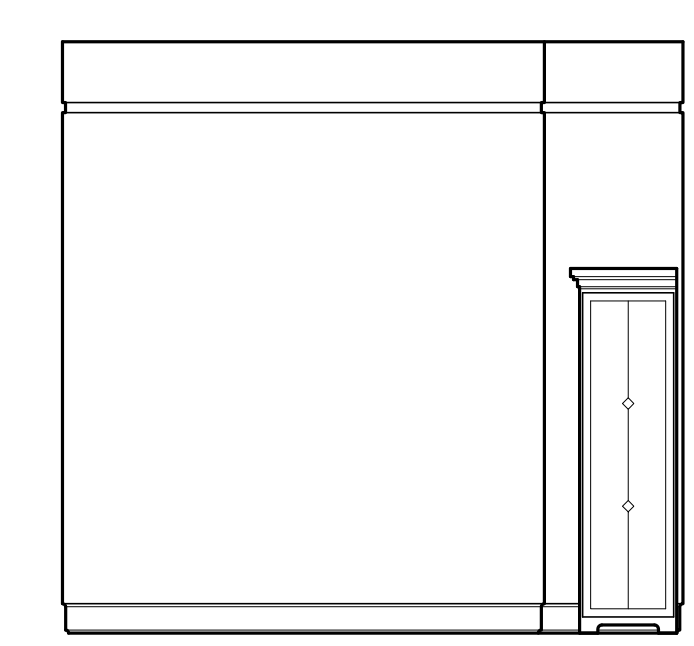
5 | INTERIOR ELEVATION UNIT 205A
1/4"=1'-0"



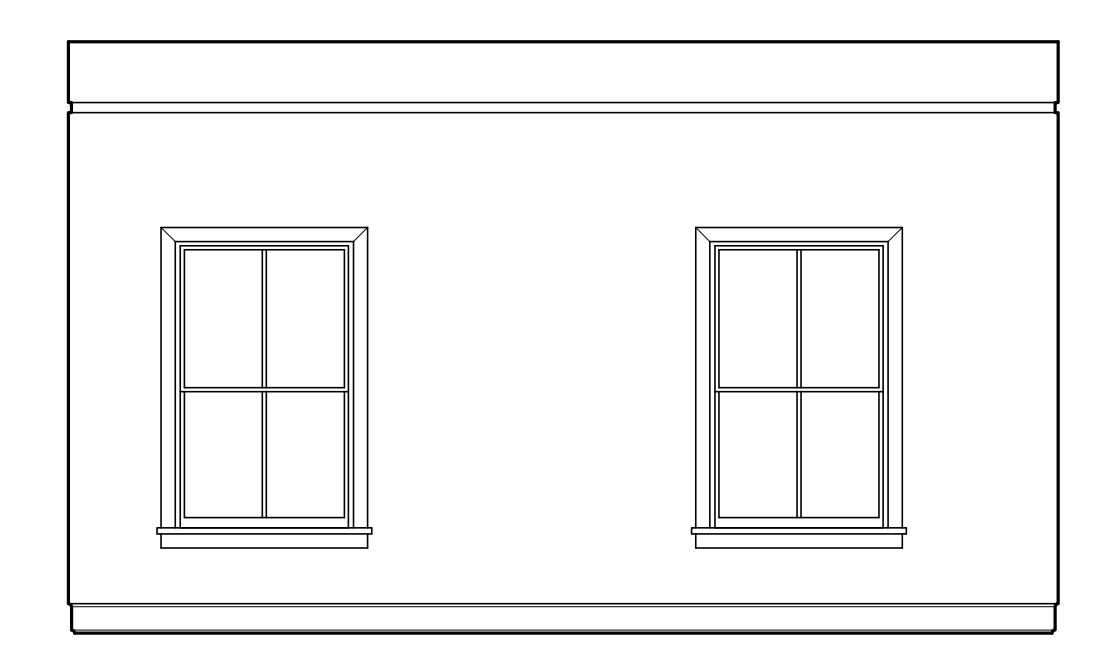
6 | INTERIOR ELEVATION UNIT 205A
1/4"=1'-0"



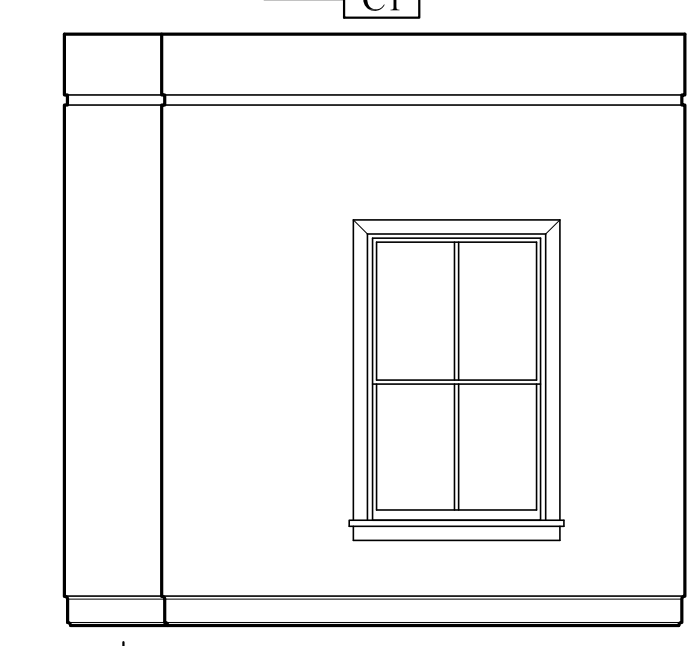
7 | INTERIOR ELEVATION UNIT 205A
1/4"=1'-0"



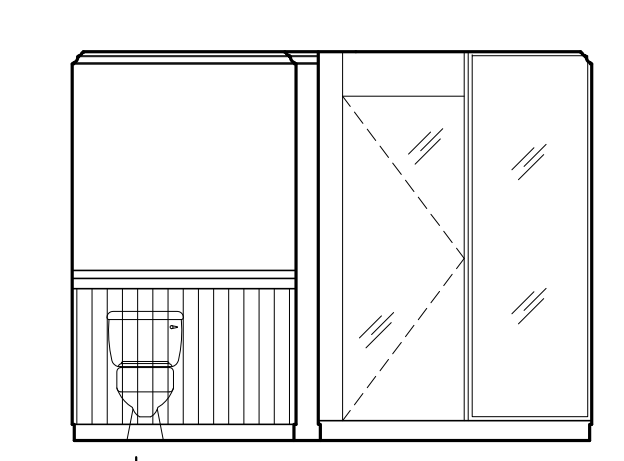
8 | INTERIOR ELEVATION UNIT 205A
1/4"=1'-0"



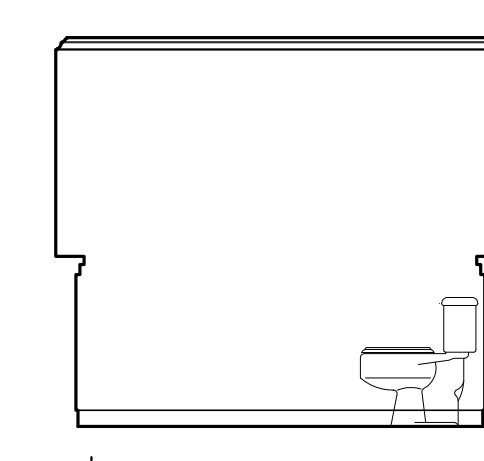
9 | INTERIOR ELEVATION UNIT 205A
1/4"=1'-0"



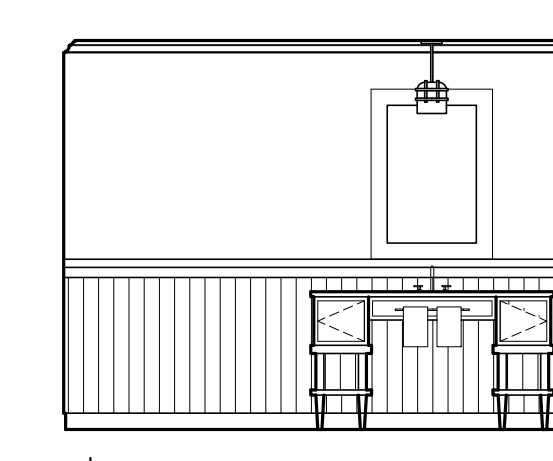
10 | INTERIOR ELEVATION UNIT 205A
1/4"=1'-0"



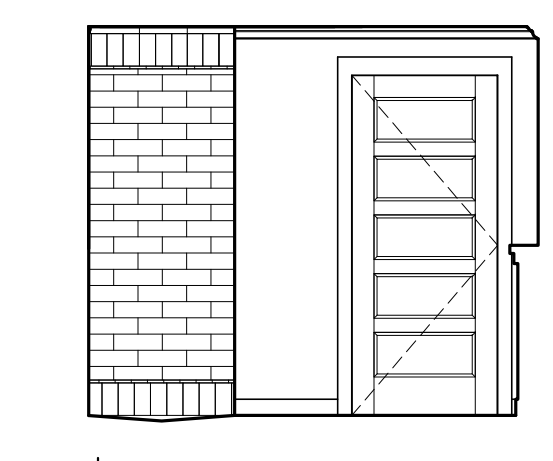
11 | INT. ELEV. UNIT 205A
1/4"=1'-0"



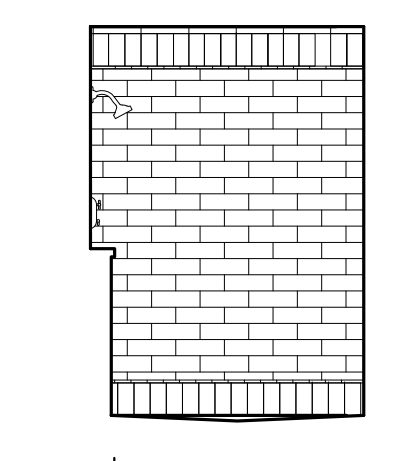
12 | INT. ELEV. UNIT 205A
1/4"=1'-0"



13 | INT. ELEV. UNIT 205A
1/4"=1'-0"



14 | INT. ELEV. UNIT 205A
1/4"=1'-0"



15 | INT. ELEV. UNIT 205A
1/4"=1'-0"

Prepared For:
The Inn at Diamond Cove, LLC.
PO BOX 3572
PORTLAND, ME 04101

Interior Designer:
truexcollins
INTERIORS
208 BATTERY STREET BURLINGTON, VERMONT 05401 USA
Phone 802.656.2775 Fax 802.247.1076
ARCHITECTURE | INTERIOR DESIGN | TRUEXCOLLINS.COM

Architect:
ARCHETYPE architects
48 Union Wharf Portland, Maine 04101
(207) 772-6022 Fax (207) 772-4056

Project:
THE INN AT DIAMOND COVE, LLC
McKINLEY COURT
GREAT DIAMOND ISLAND, MAINE

Scale: As Noted
Date: 04 March 2013

Revisions:

INTERIOR ELEVATIONS UNIT 205 A

A9.21