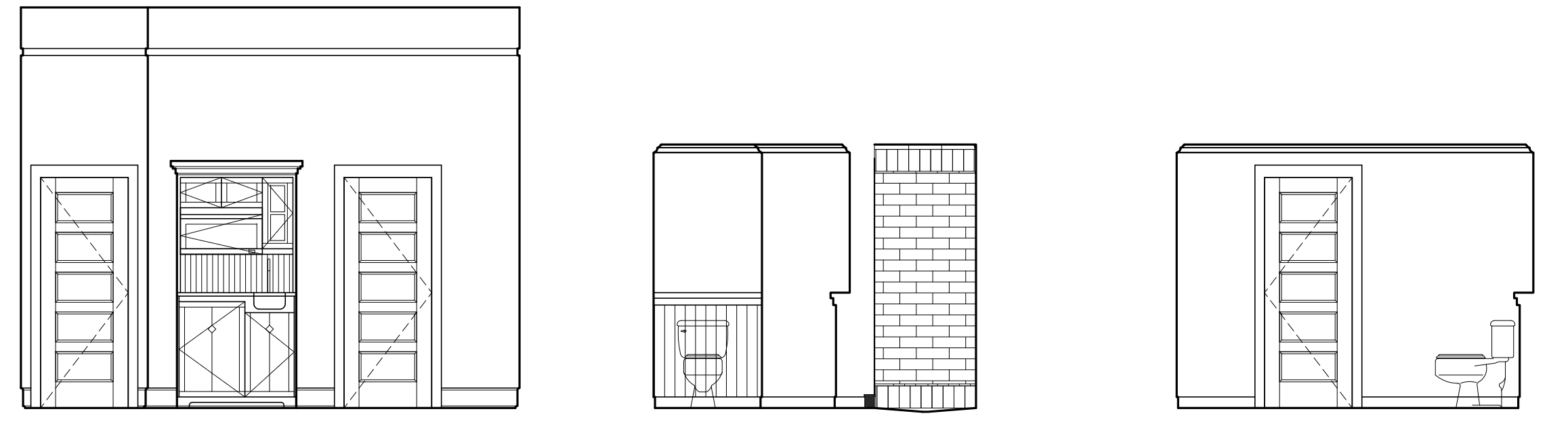


1 | INTERIOR ELEVATION UNIT 204B
1/4"=1'-0"

2 | INTERIOR ELEVATION UNIT 204B
1/4"=1'-0"

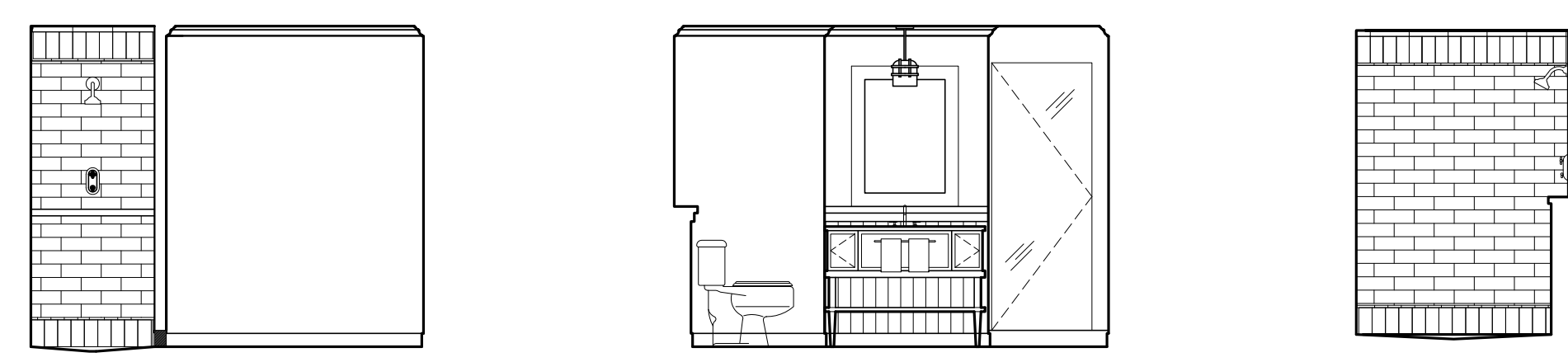
3 | INTERIOR ELEVATION UNIT 204B
1/4"=1'-0"



4 | INTERIOR ELEVATION UNIT 204B
1/4"=1'-0"

5 | INTERIOR ELEVATION UNIT 204B
1/4"=1'-0"

6 | INTERIOR ELEVATION UNIT 204B
1/4"=1'-0"



7 | INTERIOR ELEVATION UNIT 204B
1/4"=1'-0"

8 | INTERIOR ELEVATION UNIT 204B
1/4"=1'-0"

9 | INTERIOR ELEVATION UNIT 204B
1/4"=1'-0"

Prepared For:
The Inn at Diamond Cove, LLC.
 PO BOX 3572
 PORTLAND, ME 04101

Interior Designer:
truexcollins
 INTERIORS
 208 BATTERY STREET BURLINGTON, VERMONT 05401 USA
 Phone 802.686.2775 Fax 802.227.1076
 ARCHITECTURE | INTERIOR DESIGN | truxcollins.com

Architect:
ARCHETYPE
 architects
 48 Union Wharf Portland, Maine 04101
 (207) 772-6022 Fax (207) 772-4056

Project:
**THE INN AT
 DIAMOND COVE,
 LLC**
 MCKINLEY COURT
 GREAT DIAMOND ISLAND, MAINE

Revisions:

Date:	04 March 2013	Scale:	As Noted
INTERIOR ELEVATIONS			
UNIT 204 B, 206 B			