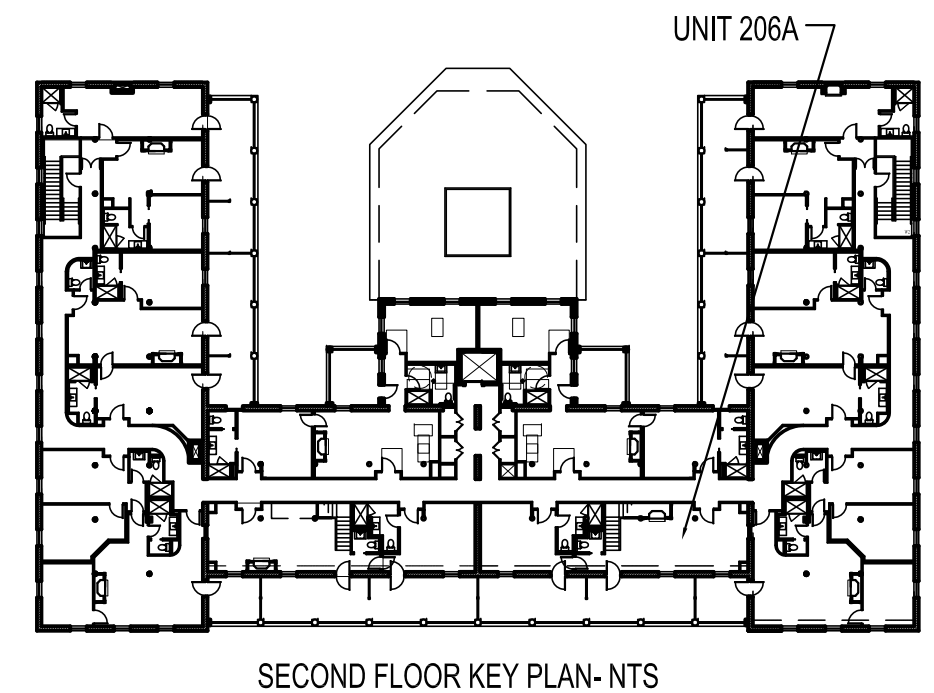
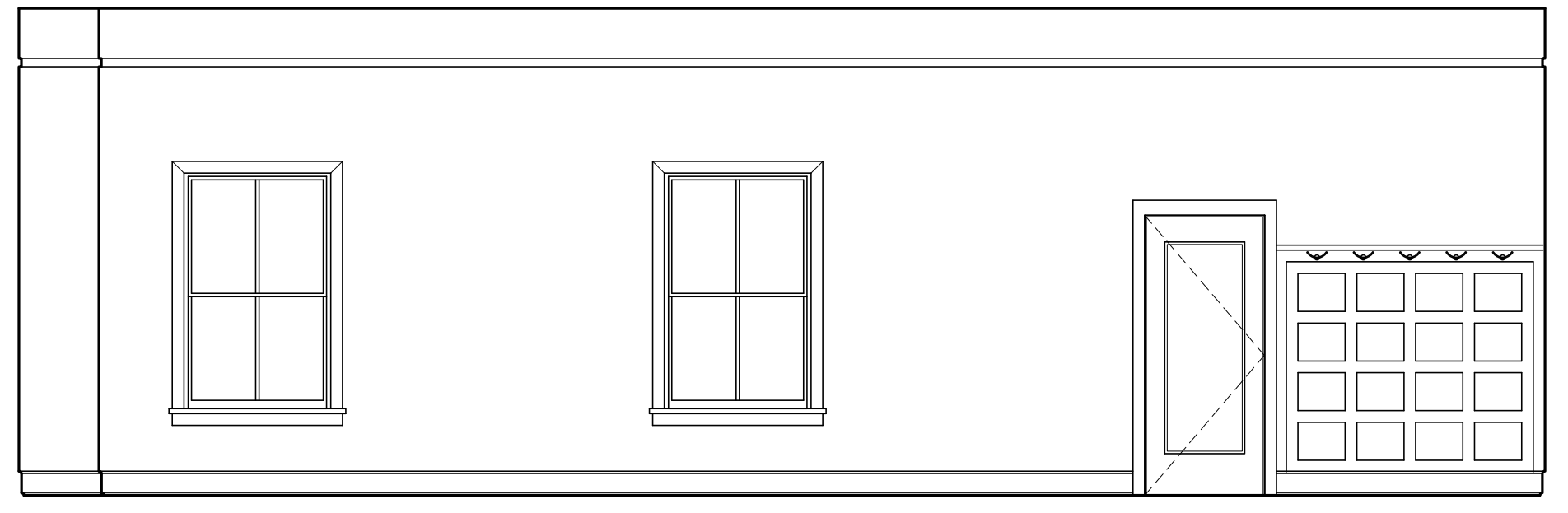


3 | INTERIOR ELEVATION UNIT 206A  
1/4"=1'-0"

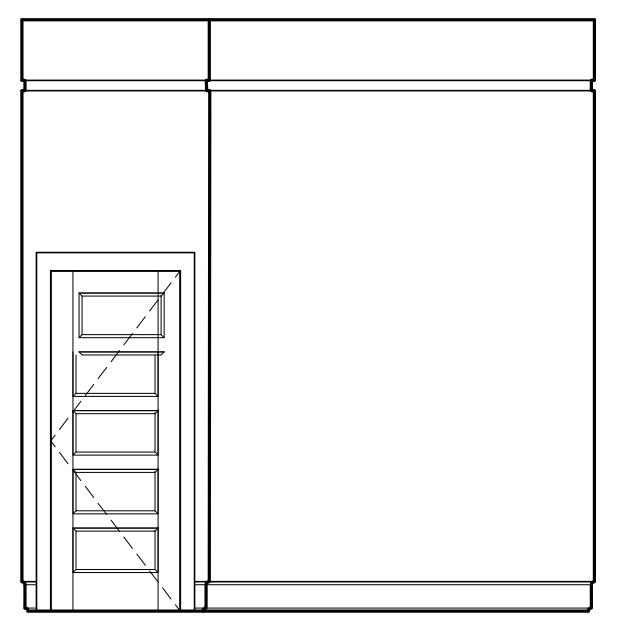
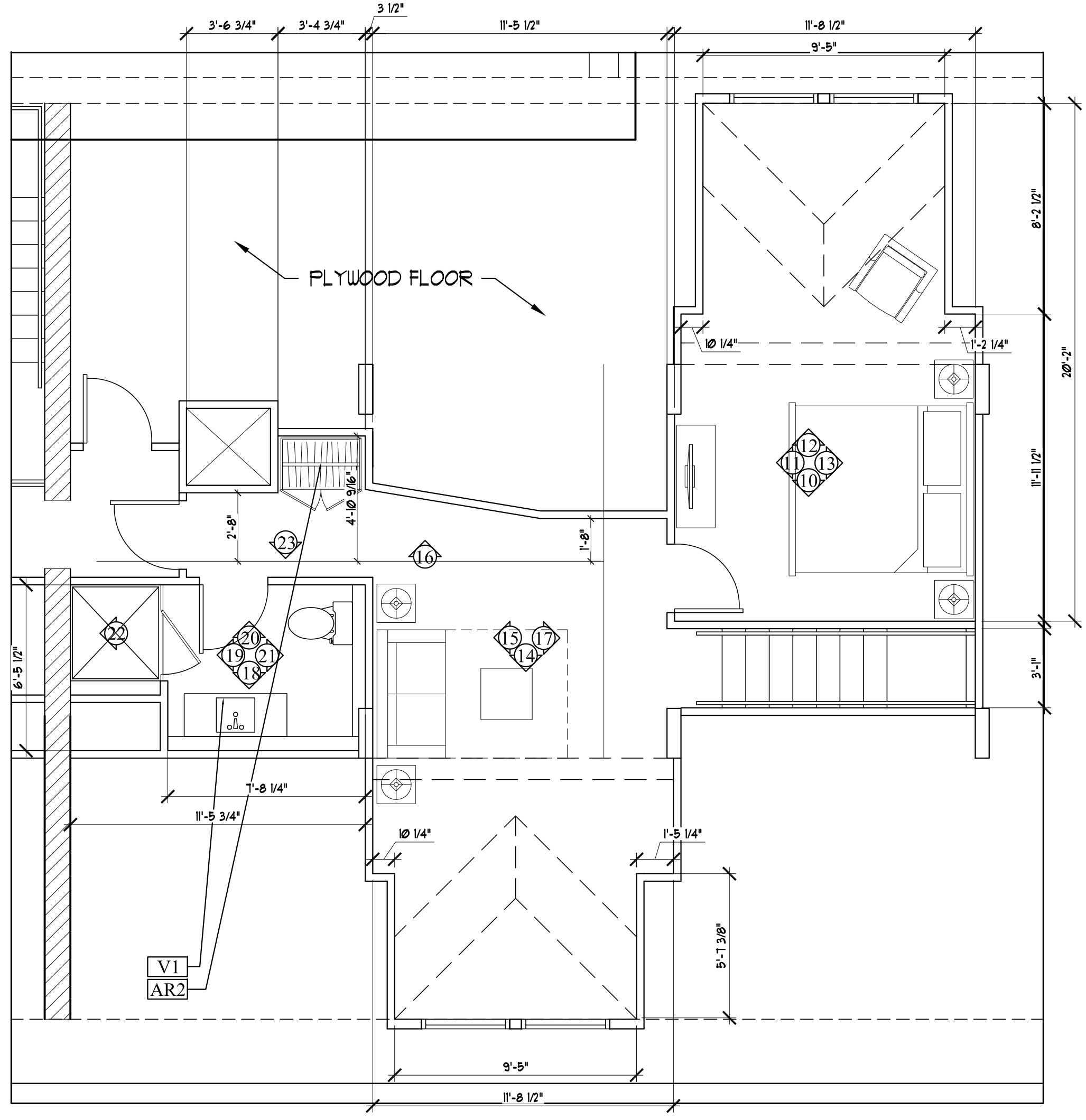
NOTES-  
-REFER TO M1.00 FOR  
MILLWORK DETAILS



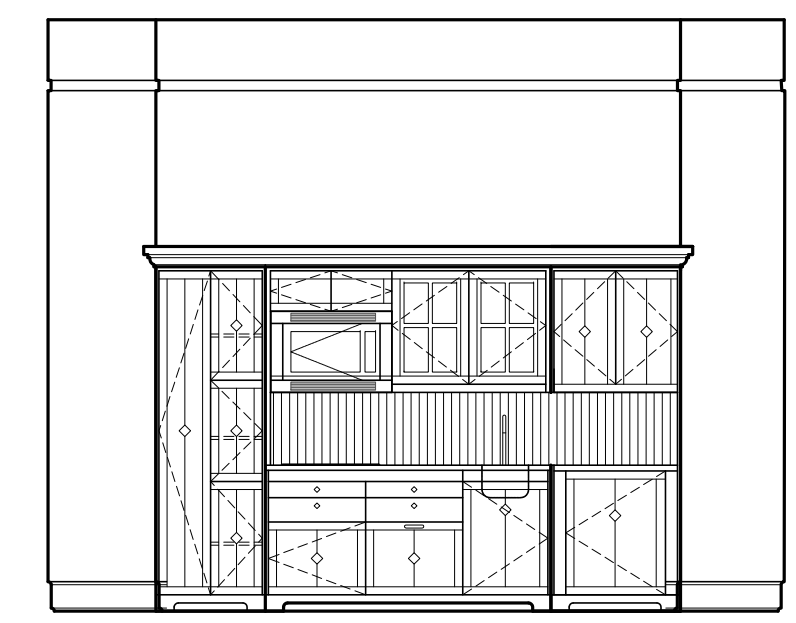
SECOND FLOOR KEY PLAN- NTS  
UNIT 206A



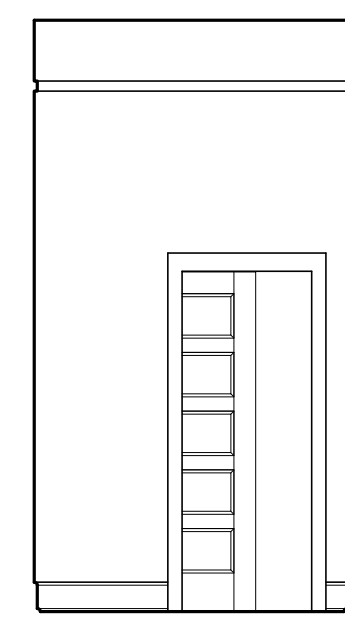
1 | INTERIOR ELEVATION UNIT 206A  
1/4"=1'-0"



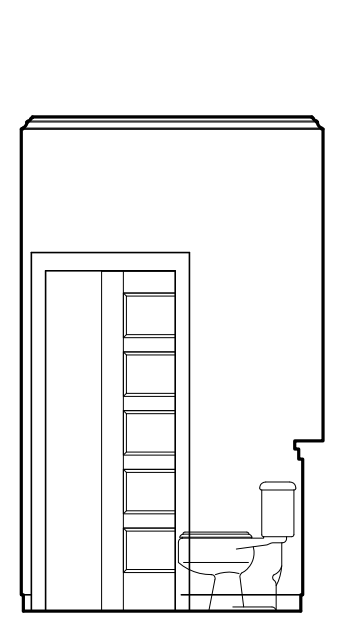
2 | INTERIOR ELEVATION UNIT 206A  
1/4"=1'-0"



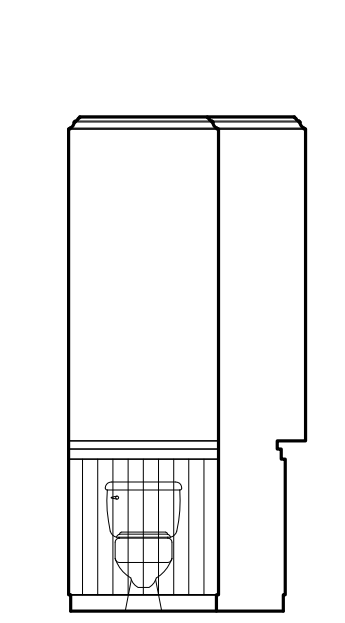
4 | INTERIOR ELEVATION UNIT 206A  
1/4"=1'-0"



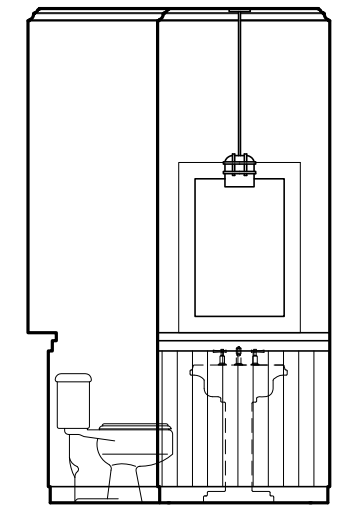
5 | INT. ELEV. UNIT 206A  
1/4"=1'-0"



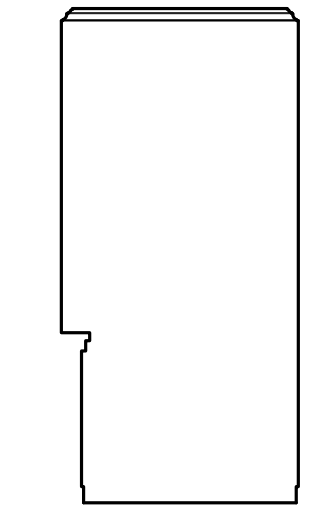
6 | INT. ELEV. UNIT 206A  
1/4"=1'-0"



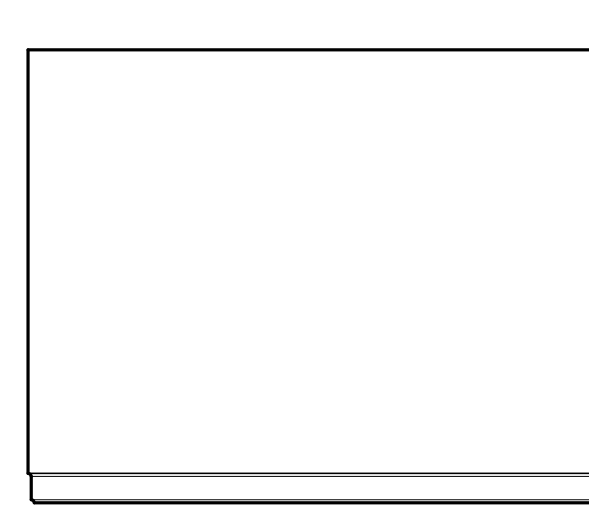
7 | INT. ELEV. UNIT 206A  
1/4"=1'-0"



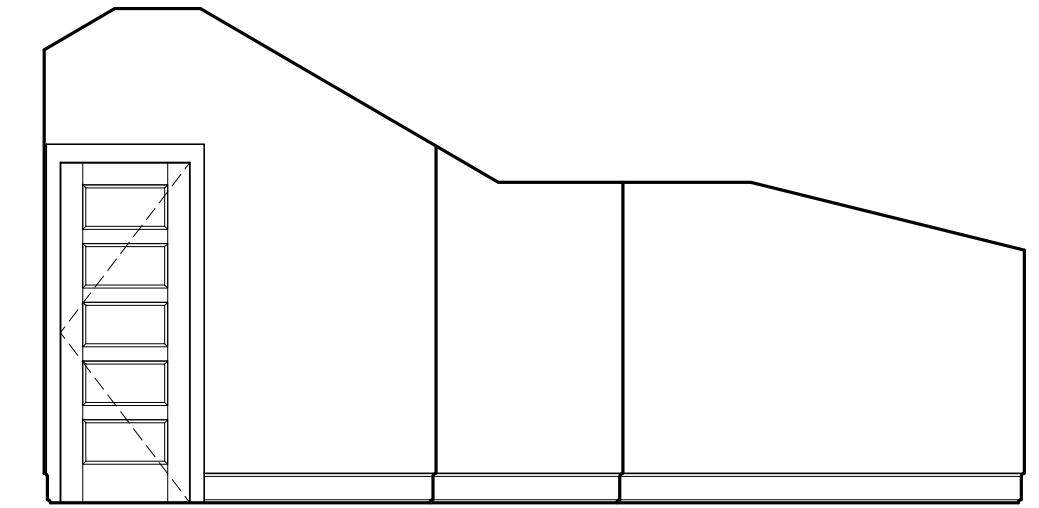
8 | INT. ELEV. UNIT 206A  
1/4"=1'-0"



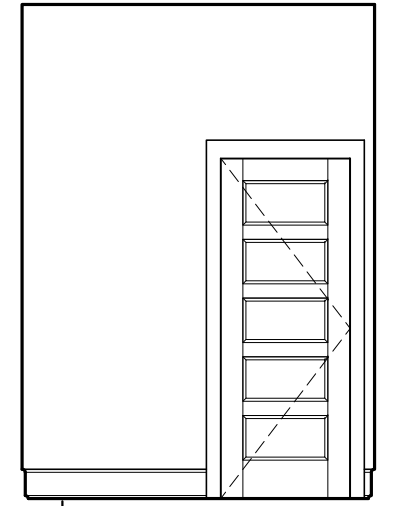
9 | INT. ELEV. UNIT 206A  
1/4"=1'-0"



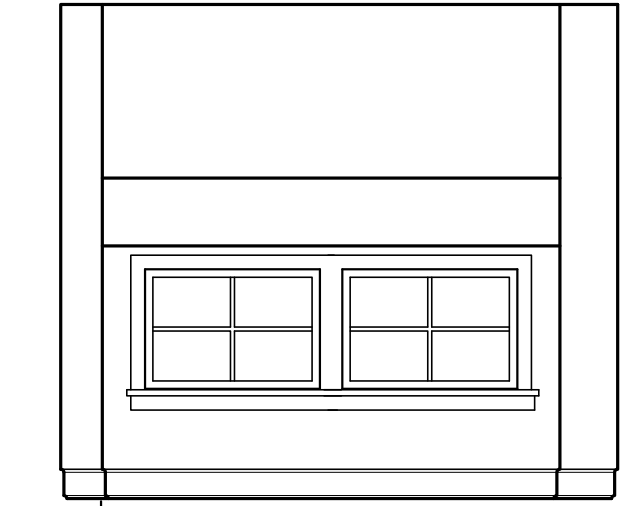
10 | INT. ELEV. UNIT 206A  
1/4"=1'-0"



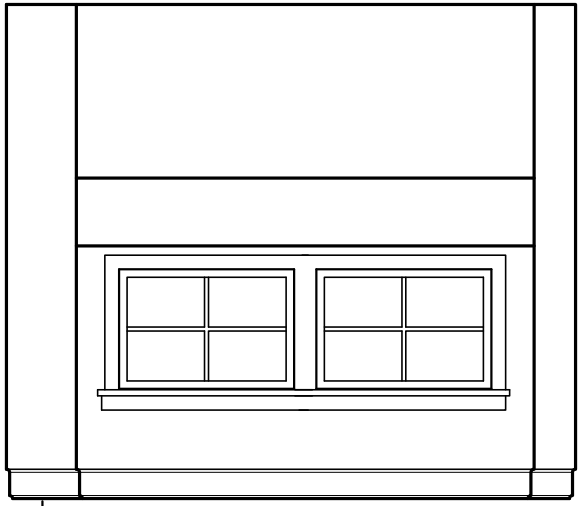
11 | INTERIOR ELEVATION UNIT 206A  
1/4"=1'-0"



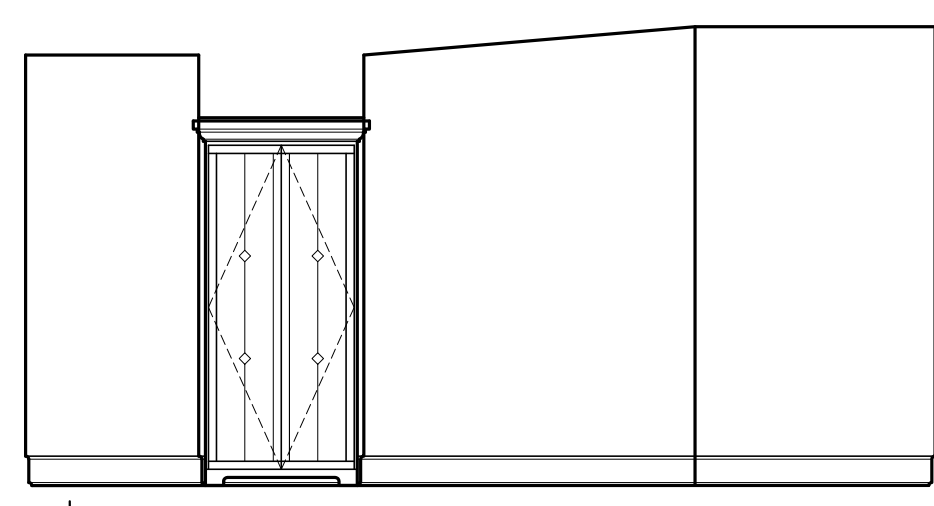
23 | INT. ELEV. UNIT 206A  
1/4"=1'-0"



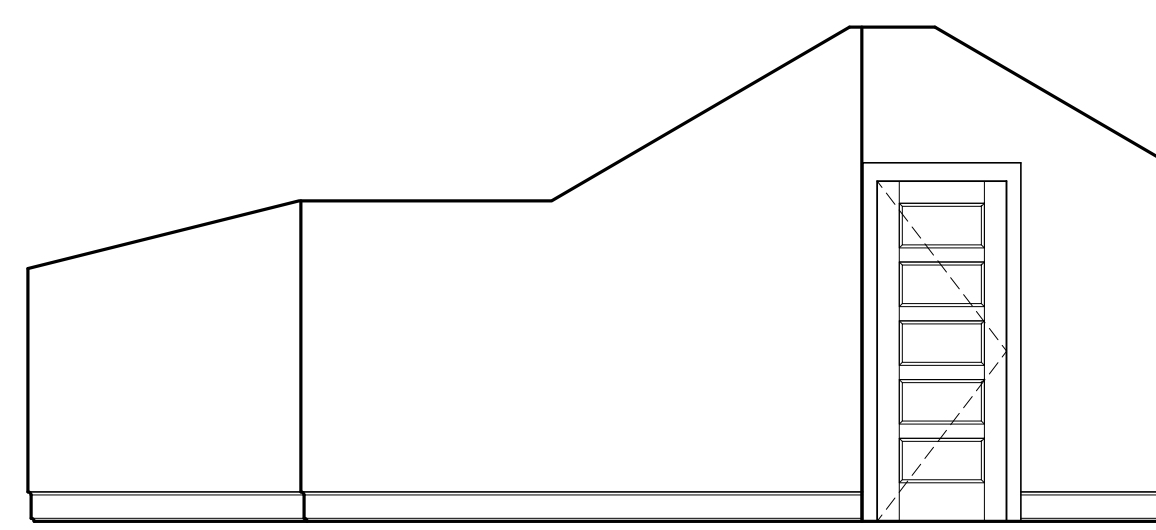
12 | INT. ELEV. UNIT 206A  
1/4"=1'-0"



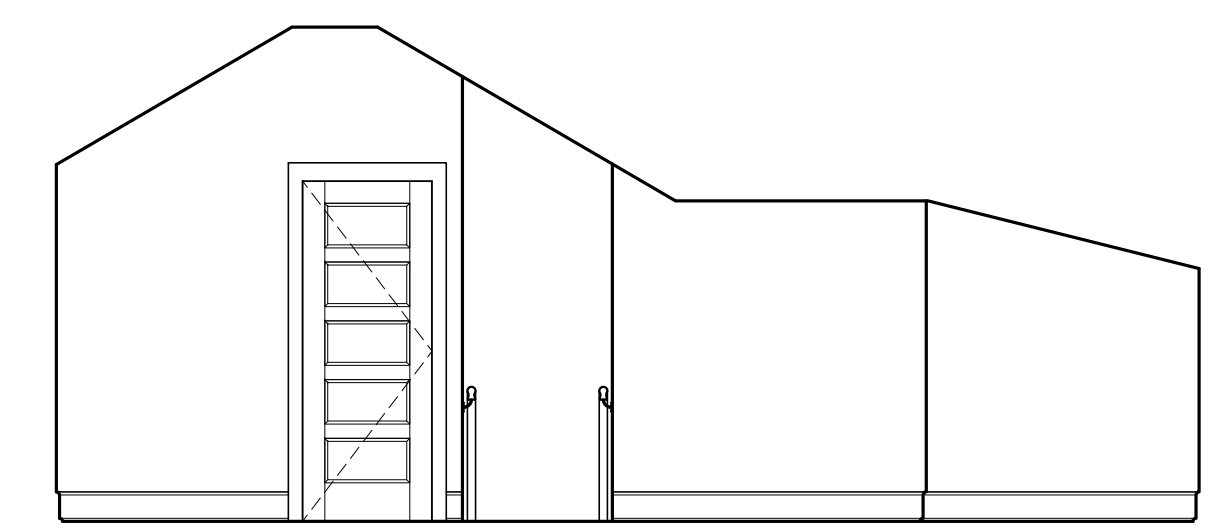
14 | INT. ELEV. UNIT 206A  
1/4"=1'-0"



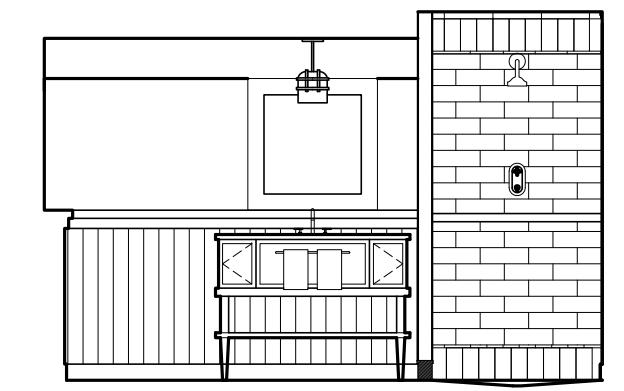
16 | INTERIOR ELEVATION UNIT 206A  
1/4"=1'-0"



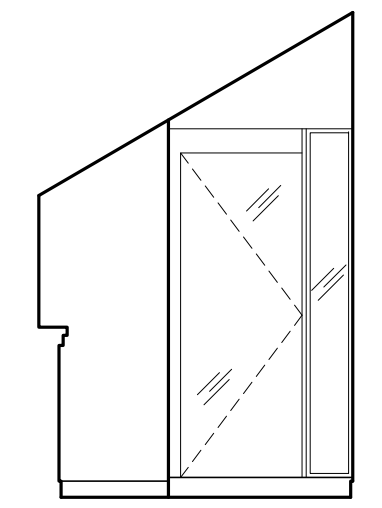
15 | INTERIOR ELEVATION UNIT 206A  
1/4"=1'-0"



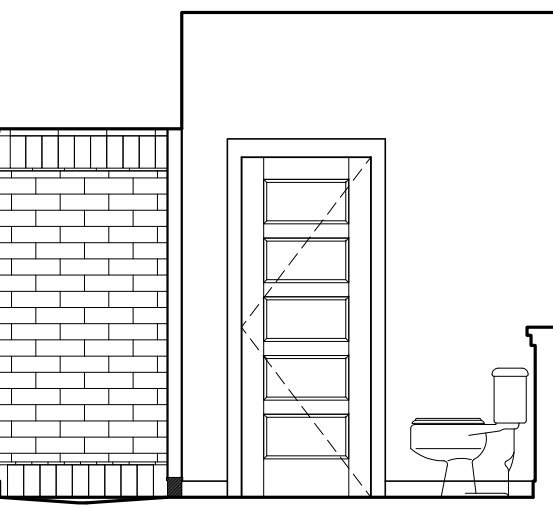
17 | INTERIOR ELEVATION UNIT 206A  
1/4"=1'-0"



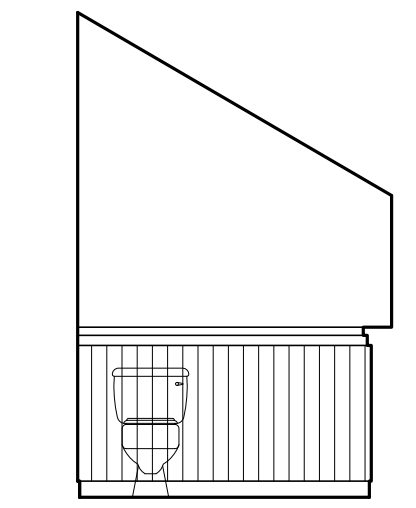
18 | INT. ELEV. UNIT 206A  
1/4"=1'-0"



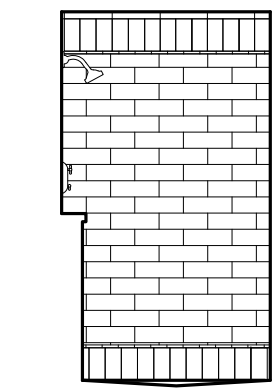
19 | INT. ELEV. UNIT 206A  
1/4"=1'-0"



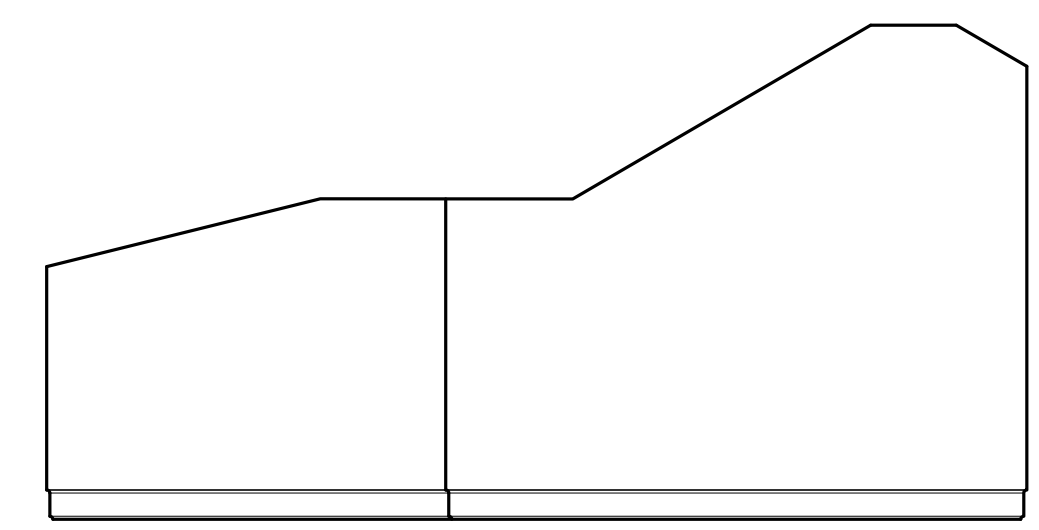
20 | INT. ELEV. UNIT 206A  
1/4"=1'-0"



21 | INT. ELEV. UNIT 206A  
1/4"=1'-0"



22 | INT. ELEV. UNIT 206A  
1/4"=1'-0"



13 | INTERIOR ELEVATION UNIT 206A  
1/4"=1'-0"

Prepared For:  
**The Inn at Diamond Cove, LLC.**  
PO BOX 3572  
PORTLAND, ME 04101

Interior Designer:  
**truexcollins**  
ARCHITECTS  
208 BATTERY STREET BURLINGTON, VERMONT 05401 USA  
Phone 802-656-2775 Fax 802-227-1076  
ARCHITECTURE INTERIOR DESIGN

Architect:  
**ARCHETYPE architects**  
48 Union Wharf Portland, Maine 04101  
(207) 772-6022 Fax (207) 772-4056

Project:  
**THE INN AT DIAMOND COVE, LLC**  
McKENLEY COURT  
GREAT DIAMOND ISLAND, MAINE

Revisions:

Date: 04 March 2013  
Scale: As Noted

**INTERIOR ELEVATIONS UNIT 206 A**

**A9.19a**